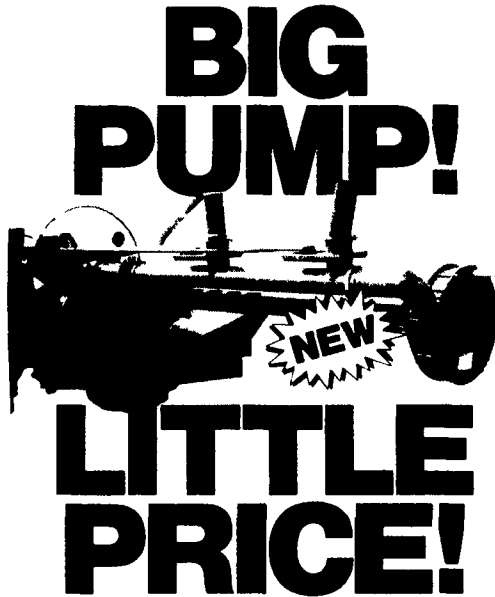


TRADE-IN DAYS!
\$1000 Trade-In On Your Old Pump
 Offer Expires April 30, 1991



The first time you use this new shredder pump, you'll know it's a real Nesseth! It's all new, it's tough and it features our high-capacity Starburst impeller that rips even the hardest packed material apart to form a smooth homogenized mixture for easy handling.



by J-STAR

Call For Free Demonstration

Convenient, easy to maneuver and built to last.



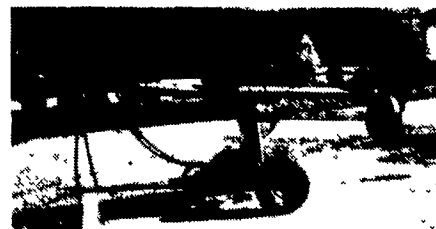
LAPP'S BARN EQUIPMENT

5935 OLD PHILADELPHIA PIKE, GAP, PA 17527

PHONE: 717-442-8134

WE SERVICE WHAT WE SELL

— Radio Dispatched Trucks —



12 Ft. Martin Manure Pump
\$1200.00
717-529-2512

USED EQUIPMENT

Buying - Let Us Find It
 Selling - Let Us Sell It
 No Results - No Charge
 Call For Details

Dennis

717-396-0755

COLLECTORS CORNER

JOHN DEERE'S

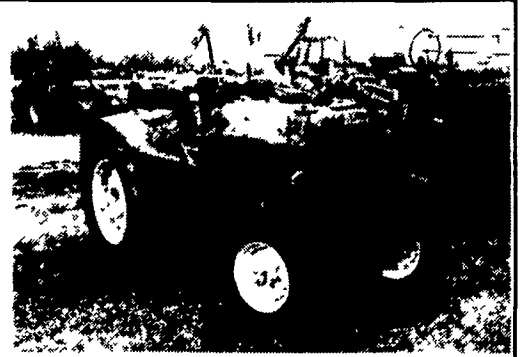
- | | | |
|-----------|-----------|----------------|
| (4) 830's | (3) 320's | (5) H's |
| (8) 730's | (4) 80's | (6) L's, LA's, |
| (3) 630's | (2) 70's | LI's |
| (1) 530 | (3) 60's | (5) M's, MT's |
| (2) 435's | 50 | (2) F's |
| (5) 430's | (3) 40's | 4020 P.S. |
| (5) 820's | (8) A's | High |
| (3) 720's | (7) B's | Crop |
| (3) 620's | (4) D's | (2) 440 |
| (3) 520's | (3) G's & | Crawler's |
| (3) 420's | GM's | |

OTHERS

- | | |
|----------------------|-----------------------|
| Case VAC- WF- 3 Pt. | MH Pony |
| (2) Case 400 HI Crop | Oliver 1550 HI Crop |
| Case 830 HI Crop | Oliver 1650 HI Crop |
| Ferg. TO30- Rare | Oliver Super 77 |
| Varlation | HI Crop |
| Ford 2000-100 Hours | Oliver 60 |
| (2) Ford 8N- 1 Has | Oliver 66 |
| 400 Hours | (2) Oliver Super 77 |
| Farmall 560- 1500 | (2) Oliver HG Crawler |
| Hours | Oliver OC46 Loader |
| IH Spirit Lawn & | |
| Garden w/Tools | |

1949 JD AO- Unstyled- Not Running- As Received- We Also Have 1950 The Same Way, Good Restorable Material.

\$1500 EACH



Best Buys in Used Equipment

TRACTORS:

- IH Farmall "C" w/Cultivator
- IH 460 Gas
- IH 460 Diesel Tricycle - Nice Shape!
- IH 884 2WD w/2250 Loader
- Int. Cub Lo-Boy w/60" Rotary Mower - Real Nice!
- Ford 4000 w/Ford Loader- Coming In!
- Ford 2110 Gas Low Boy w/Big Turf Tires
- Case 1490, Power Shift, Low Hrs., Nice Cond.
- Ford 2110 Gas w/Ford Loader
- Ford 3000 Gas w/Ford Loader
- JD 90 Skid Loader
- IH 574 Diesel w/2050 Loader

COMBINES:

- IH 227 CH, fts 315, 205 or 203
- IH 844 Cornhead
- MF 1144 4-Row Wide CH, Ex. Cond.
- 744 Wide Cornhead for 715, Ex. Cond.
- MF 510 Diesel, AC Cab, Transm. Rebuilt, Real Nice Cond.

COMBINES & EQUIP. FOR PARTS:

- (2) IH 315's
- IH 403 Gear, 4R W Hd. & 12 Ft. Plat.
- IH 227 Cornhead
- IH 700 13' Platform
- IH 550 Chopper (Parts)
- 400 6R Cyclos- Parts or Field Use
- IH 430 Baler

HAY & FORAGE:

- Int. No. 8 Flail Chopper - Reconditioned & Repainted
- NH 477 7 Ft. Mower Conditioner, Nice Condition
- IH 5000 D 12 Ft. Windrower, Nice Shape
- IH 5000 D 12 Ft. Windrower, Mechanic's Special - Coming In!
- JD 716 Forage Wagon, No Roof, w/JD Running Gear, Tandem Axle
- Badger Forage Box w/Tandem Axle
- IH 51 Forage Box- Nice Shape!

PLANTERS:

- AC 600 6-Row Narrow Air Planter, No Til, Ex. Cond.

TILLAGE:

- IH 37 Disk Harrow
- White 598 4/5-Bottom Vari-Width Plow, Auto Reset (Case IH Bottoms)
- Krause 2404 Disk Harrow, 40 Blades, 22", Ex. Shape

MISCELLANEOUS:

- John Blue 400 Gal. SS Pull-Type Sprayer
- John Blue Model 700 500-Gal. Sprayer - New!!
- NH 302 Liquid, Side Discharge Spreader, Single Axle, Nice Shape
- FMC DO-25 300 Gal. w/Gun & Hose Reel, Trailing Model, 2 Cyl. Kohler Engine, Like New
- Vicon 165 3 Pt. Hitch Disc Mower - Demo
- LPL 200 Automatic Roller Mill, 3 Hp. Motor, Vert. Auger - Like New - \$2,400!
- Work Saver Front 3 Pt. Hitch Package For Case IH 685 Tractor- \$1,800

OUTDOOR POWER EQUIP.-

Good Selection Of Used Lawn & Garden Tractors— All Makes And Models

- 1987 Cub Cadet, Model 1872 18HP, w/50" Deck
- 1987 Cub Cadet, Model 2072 20HP, w/50" Deck, Rental Unit
- Cub Cadet 108 Mower
- Cub Cadet 105 w/Mower
- Cub Cadet 482
- Toro 7 Gang Pull-Type Golf Course Mower
- (2) National 3-Gang Triplex, 1987 Model, 68" Cut- Were \$2,000- Now \$1,800 Ea.
- National 3-Gang Triplex, Late Model, 84" Cut- \$3,500

Good Selection of Used Cub Cadets In Stock

ERB & HENRY EQUIP., INC.

New Berlinville, PA
 One Mile North of Boyertown
215-367-2169
FAX: 215-367-6715



WENGBERS INC.

251 SOUTH RACE STREET, MYERSTOWN, PA 17067

HOURS:
 Mon.-Fri.
 7:30 To 5:00
 Saturday
 7:30 To Noon

717-866-2130
 (Days)

717-866-7147
 Or (After 5:30 P.M.)

Sales
 Parts
 Service

FORRESTER FARM EQUIPMENT, LTD.

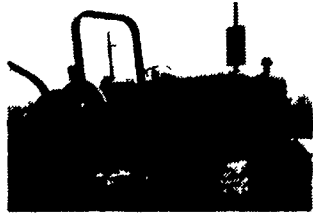
1475 Orchard Rd., Chambersburg, PA 17201
 Phone: 717-263-0705 Fax: 717-263-0078

Ford Credit

FORD VERSATILE 276 (NEW)
\$42,000



FORD 3910
 200 Hrs.,
 New Warranty
\$10,900



NEW FORD 8630 4WD
\$50,000



NEW FORD TRACTORS

- Ford 1520, 4WD
- Ford 1720, 4WD
- Ford 1720, 2WD
- Ford 1920, 4WD
- Ford 1920, 2WD
- Ford 3930, 4WD
- w/Shuttle Trans.
- Ford 4610, Low Profile, 62 H.P.
- Ford 7810 Fender Tractor
- Ford 8630, 2WD, Powershift
- Ford 555C TLB w/Cab
- Ford 555C TLB, 4WD w/Extend-a-hoe
- Versatile 276 w/Loader

- NH 520 Manure Spreader
- NH 553 Baler
- NH 565 Baler w/Thrower
- NH 570 Baler w/Thrower
- NH 630 Baler
- NH 848 Baler
- NH 144 Windrow Inverter
- NH 254 Tedder Rake
- NH 900 Chopper
- NH 790 Chopper
- NH 28 Forage Blower
- NH 40 Forage Blower

FORD LAWN & GARDEN

- LT 10 w/38" Deck
- LT12 w/38" Deck
- YT18 w/48" Deck
- LGT18H w/48" Deck
- LGT14D w/48" Deck

NH EQUIP.

- NH 499 Haybine

BEST BUYS IN USED TRACTORS

- | | | | |
|--|---|-------------------------------------|--|
| Ford LT12 Demo | Ford 5000 | Ford TW20, 2WD | NH 791 Manure Spreader |
| Ford 9N | Ford 540B Tractor & Loader, 1987 | Ford 555B TLB, 1,200 Hrs. | NH 1495 Self-Propelled Haybine w/2 Year Old Head |
| Ford 8N | Ford 8210, 4WD, 1984, 750 Hrs., Cab & Air | Ford TW25, 4WD JD 60 | NH 411 Discbine |
| Ford Jubilee w/Freeman Loader | Ford TW10, Cab & Air | Farmall F12 | NH 489 Haybine, Good Cond |
| Ford Jubilee w/Loader | Ford TW15, 4WD w/Cab & Air, 1,700 Hrs, 20 8 Radials, 14 9x28 Radials, New | Mitsubishi 160, 16 H.P. w/Loader | NH Super 23 Blower |
| #1933. Ford 2000 | | Long 510, 4WD | NH 512 12' Swing Tongue Haybine |
| #1934. Ford 2000 | | Gehl 6620 Skid Loader w/Attachments | |
| Ford 2600, New Paint | | NH 679 Manure Spreader w/Tailgate | |
| Ford 4610 Orchard Model, 4 Cyl. Engine w/8 Hrs | | | |

Located: 1 Mile Off Exit 8, On 696, North To Orchard Rd.

Hours: 8:30-5:00 Monday Thru Friday, 8:30-12:00 Saturdays
 We Accept VISA & MasterCard • WE SHIP PARTS UPS DAILY

