

Excellent Ford Tractors

6610, dual power, weights, dual hydraulic, 1,890 hrs. **SOLD**
 6600, dual power, dual hyd., 540/1000 PTO, roll bar & weights, 1,900 original hrs.
 5610, dual hydraulic pumps & remotes, 1988 model w/QT loader, 750 hrs.
 4610, 4WD, dual hyd., weights w/Ford QT loader, 750 hrs. **SOLD**
 4600 dsl., 1980 model, weights, 16.9x30, 1,050 original **SOLD** owner hrs.
 2120, 4WD, hyd. **SOLD** w/7109 QT loader, 72" HD bucket, remotes, 10 hrs.
 8N w/5' rotary mower, excellent condition
 Coming in... 7600, dual power
 5000, dual power
 4600, diesel

Equipment

NH 489 haybl **SOLD** final owner, excellent
 NH 144 windrow inverter
 Ford 5' 3 Pt. Rotary Mower (Bush Hog Type)
 Ford 930A, 48", 3 Pt. Finishing Mower
 20.8x38 duals, used 1 season

Burkholder Bros.

Lebanon, PA
 717-272-2352 717-949-2123

Discontinuing Farming For Sale

Case 1190 Mo-Co Haybine.....\$4,500.00
 JD 394 **SOLD** Chopper.....\$5,000.00
 JD 530 Round Baler.....\$7,000.00
 NH 271 Baler With Thrower.....\$1,000.00
 JD 300 Elevator, 32 Feet.....\$300.00
 JD 716 Forage Wagon-Tandem Axle.....\$5,000.00
 JD 716A Forage Wagon-Tandem Axle.....\$6,000.00
 3 Bale Wagons- Wooden Sides.....\$800.00 Each
 JD Wheel Rake.....\$300.00
 Farmhand Wheel Rake.....\$400.00
 1500 Gal. Mueller High Perform Bulk Tank w/2 Compressors (1 New).....\$9,000
 Additional Machinery Available Later Spring And Summer.

Approximately 100 Tons Of Forage Sorghum.
 Good Quality Hay And Straw Available.

TUSSEY VIEW FARM, INC.

R.D. #1, Box 323
 Centre Hall, PA 16828
 Fred Strouse- Phone (814) 364-1245-
 Boyd Homan

WES STAUFFER ENGINES & EQUIPMENT

34 Pleasant Valley Rd.
 Ephrata, PA 17522
 (717) 738-4215

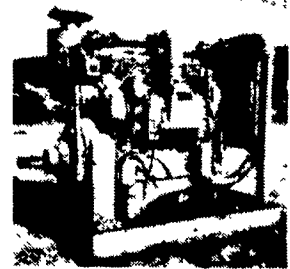
Authorized Dealer



5 to 20 HP Gas & Diesel Engines

Parts Shipped Daily UPS

Diesel Engines & Power Units



Detroit Diesel Cummins
 53-71-92-8.2 A-B-C Series
 48 - 500 HP 41 - 250 HP

Industrial - Agricultural - Automotive
 Twin Disc & Rockford Clutches
 KC Replacement Parts & Injectors

Diesel Engine Service

13 Pleasant Valley Rd.
 Ephrata, PA 17522
 717-733-3890

The SICO Company "Spring Lubricants Special"

Product	Special Price
Citgo Citgard 500 15W-40 (55 Gallon Drum).....	\$206.25/Drum
Citgo Citgard 500 SAE 30 (55 Gallon Drum).....	\$206.25/Drum
Citgo Citgard 500 15W-40 (Case/4-1 Gallon).....	\$18.20/Case
Citgo Tractor Hydraulic Fluid (55 Gallon Drum).....	\$206.25/Drum
Citgo Tractor Hydraulic Fluid (5 Gallon Pall).....	\$23.25/Pall
Citgo Premium Lithium EP2 Grease (35 Pound Pall).....	\$27.00/Pall
Citgo 80/90 Gear Oil (35 Pound Pall).....	\$24.50/Pall

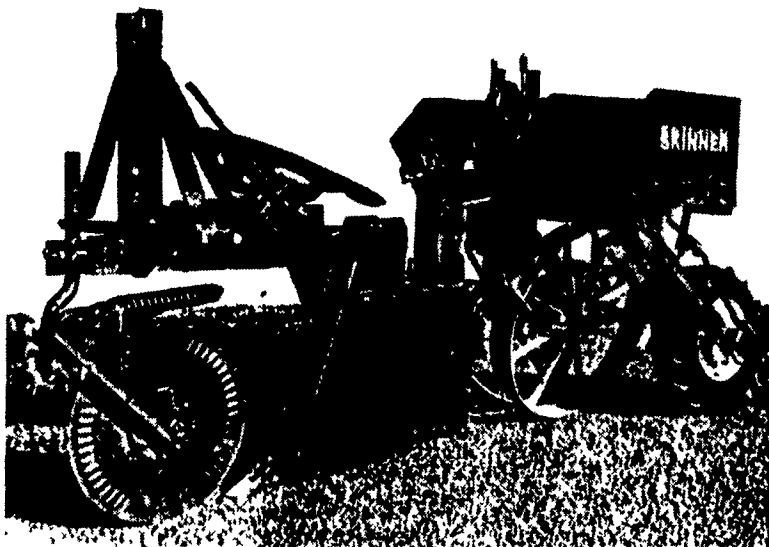
The "Spring Lubricant Special" Will Continue Until April 30, 1991
 Product Can Be Picked Up At Any Of Our Convenient Locations

In Pennsylvania:

Mount Joy
 West Chester
 Oxford
 Lancaster
 York

Carlisle
 Ephrata
 Lebanon
 Lemoyne

TREE-O-MATIC CHRISTMAS TREE PLANTER



Special Features

- 3-Point Hookup to Tractor
- Heavy Duty Steel Packing Wheels
- 18" Spring Loaded Coulter with Sealed Bearings
- Detachable Plow Point
- Sidehill Adjustment
- Large Tree Holding Containers
- Individual Rubber-Tired Spacing Wheel, Spring Loaded
- Fast planting of any type of seedling
- Better than one thousand trees per hour with one man
- Uniform spacing from inches to 25 feet
- Feet placed deep in the soil
- Self-closing rubber pockets hold the tree gently regardless of size
- Trees are set at the right depth and held until soil is pressed firmly around their roots
- Large steel wheels press dirt evenly, even in wet or loose soils
- Operator is in constant view of the trees that are being planted
- Standard spacing from 4 to 9 feet
- Plants up to 18" tall
- 3" inside width of planting boot

\$1850.00

Extras
 Twin seats — Close Planting Pocket Chain

RINGO HILL FARMS EQUIPMENT CO., INC.

1624 Route 212, Pleasant Valley
 Quakertown, PA 18951
 (215) 346-7340 FAX (215) 346-8041

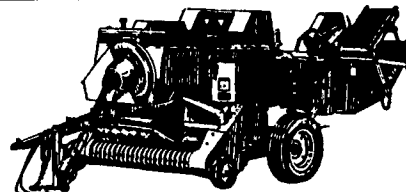
NEW EQUIPMENT IN STOCK

CLEARANCE!

- Case 1825 Diesel Unloader- Extra Special Price! (3 Left!) - \$900 Company Rebate
- Case IH 2200 Loader
- Case IH 2250 Loader
- Case IH 7110, 2WD, Demo - Call For Price!
- Case 685, 4WD, Shuttle Shift (Demo)
- Case 530 Spreader
- Case IH 415 Packer Mulcher, 10 Ft. 1" Demo.
- Case IH 8360 12 Ft. Hydroswing
- Case IH 8320 7 Ft. Mower Conditioner
- Case IH 8540 Twine Baler w/Thrower

★ MUST SELL...CALL FOR PRICES ★

Call For The Best Deal Now And Get An
 Extra Case IH 10% Discount!



MAXXUM TRACTORS
 5140, Cab, MFD
 5130, ROPS, 2WD

- Case IH 8520 Twine Baler w/Thrower
- Case IH 8545 Twine Baler w/Thrower
- Case IH 8420 Round Baler
- Case IH 8430 Round Baler
- Case IH 8830 12 Ft. Self Propelled Mower Conditioner

- Case IH 395, 4WD, Shuttle Shift- New Model
- Case IH 485, 4WD, Shuttle Shift - Old Price!
- Case IH 595, 2WD, ROPS
- Case IH 695, 2WD, Cab
- Case IH 895, 4WD w/Shuttle Shift
- Case IH 1825 Diesel Uni-Loader
- Case IH 1845C Uni-Loader - New 60 Hp. Model In Stock

NEW! CASE 1840 UNI-LOADER IN STOCK!
 Special Company Rebate!

- Case IH 145 Rollover Plow, Auto. Reset- In Stock
- Case IH 475 Disk Harrow, 11'6" Cushion Gang, 7 1/2" Spacing
- Case IH 496 22'2", 7 1/2" Spacing
- Case IH 496 19'1" 9" Spacing Disk Harrow
- Case IH 496 18'7" 7 1/2" Spacing Disk Harrow
- Case IH No. 10 Sub-Soller, Manual Reset
- Case IH 415 Packer Mulcher, 12'2"
- Case IH 181 Minimum Till 15 Ft. Rotary Hoe

Over 20 200-Series Case-IH Compact Tractors In Stock!



Hours: Daily 7:30 to 5:00; Sat. 7:30 to 3

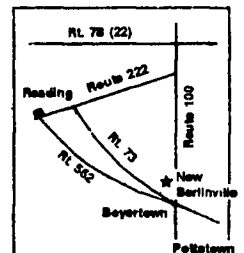


MAGNUM IS HERE!
 7110 2WD - Demo
 7120 - 2WD & 4WD
 7140 - 4WD, Duals

- Case IH 56 Blower
- Case IH 600 Blower
- Case IH 900 6-Row Planter, Liquid or Dry
- Case IH 8340 9 Ft. Mower Cond.
- Case IH 540 Spreader
- Case IH 2255 Loaders
- Case IH 1043 Cornhead, 4 Row
- Case IH 1020 Platform, 15 & 16"

Case IH Combines In Stock
 Case IH 1660

We Ship UPS Daily!



ERB & HENRY EQUIP., INC.

New Berlinville, PA
 One Mile North of Boyertown
 215-367-2169
 FAX: 215-367-6715

