

Lancaster Co. Livestock Market Auctions

Lancaster Livestock

Monday, April 8, 1991
Cattle Calves Hogs Sheep Goats
Monday's Auction
1257 51 132 702 172
Last Monday's Auction
986 58 303 2980 848
Last Year's Auction
805 62 229 3057 1353

CATTLE: Slaughter steers 50-100 lower, instances 150 lower; slaughter heifers steady to weak, instances 100 lower; cows 50-100 lower, except Commercial firm to 1.00 higher; bullocks and bulls fully steady. Supply included 71% slaughter steers, 12% slaughter heifers, 11% cows, and 6% bulls.

SLAUGHTER STEERS: High Choice and Prime 3-4 1235-1500 lb 79.50-80.60; few Choice 2 1200-1250 lb 80.00-81.00, couple 81.00-81.75, Choice 2-3 few 4 1200-1525 lb, few 1160-1200 lb 77.00-79.50, Select and low Choice 2-3 1150-1400 lb 73.75-77.00; Select 2-3 1250-1550 lb 68.50-72.50.

HOLSTEINS: High Choice and Prime 1270-1500 lb 70.75-71.75; Choice 1150-1625 lb 66.75-70.25; Select 1300-1450 lb 58.00-62.50.

SLAUGHTER HEIFERS: Choice 2-3 850-1350 lb 74.50-78.25; couple Choice 2 1150-1350 lb 78.50-79.25; Select 2-3 850-1200 lb 70.00-74.75; Select and Choice 1200-1500 lb heiferettes 59.00-63.00.

COWS: LO DRESSING BULK HI DRESSING Breaking Utility & Commercial 2-3 53.00-54.50 54.50-56.00 Commercial 3-4 51.00-54.00 Cutter & Boning Utility 1-2 50.00-51.50 51.50-54.50 54.50-56.00 Canner and low Cutter 47.00-49.00 49.00-50.50.

BULLOCKS: Choice 2-3 1100-1500 lb 67.75-71.00, couple 72.25-73.75, Select 1-3 1050-1300 lb 64.50-67.50.

BULLS: Yield grade 1 1300-2100 lb 63.25-69.50, five head 1600-1860 lb 72.75-76.75; Yield grade 2 1100-1550 lb 60.00-63.50.

CALVES: Insufficient volume vealers for a market test; slaughter calves steady, instances 5.00 lower. Demand good for Holstein bulls to return to farm.

SLAUGHTER CALVES: Good and Choice 280-575 lb 75.00-85.00, few Choice 85.00-100.00.

RETURNED TO FARM: Bulk 90-120 lb Holstein bulls 140.00-175.00, small frame 100.00-140.00.

HOGS: Barrows and gilts 50-100 lower, instances 2.00 lower; sows 1.00-2.00 higher.

BARROWS AND GILTS: US 1-2 210-245 lb 49.50-50.75. US 1 215-240 lb 51.50-55.00. US 1-3 220-255 lb 47.00-48.50, 255-270 lb 45.00-47.00.

SOWS: US 1-3 350-475 lb 44.00-47.00, 475-650 lb 48.00-51.50.

BOARS: All weights 37.00-39.00.

SHEEP: Slaughter lambs steady; slaughter ewes firm to 5.00 higher.

SPRING LAMBS: Choice and Prime 80-100 lb 70.00-80.00, 55-75 lb 80.00-105.00.

Vintage Livestock

Paradise, PA
April 9, 1991

CATTLE 662...USDA... Compared with Monday's market: Slaughter steers mostly 1.00 higher; Heifers scarce; Cows 1.00, instances 2.00 higher; Bulls steady. Few High Choice & Prime 2-4, 1150/1375 lbs. sl. steers 81.00-82.50, Choice #2, 1075/1350 lbs. 81.25-82.50, Choice 2-3 few 4, 1075/1400 lbs. 77.75-81.50, few 81.50-82, couple mostly #3, 1400/1500 lbs. 77-79.50, Select & low Choice 2-3 1100/1350 lbs. 76.00-78, Select 2-3, 1075/1335 lbs 68.00-73.50; High Choice & Prime 1300/1525 lbs Holsteins 71.50-73.10, Choice 1275/1550 lbs. 65.50-71, few Select 1075/1500 lbs 64.00 65.00 Breaking Utility & Commercial cows 2-3, 54.25-57.25, high dressing 57.25-60, Commercial 3-4, 52.00-54, Cutter & Boning Utility 1-2, 52.00-55.50, high dressing 55.50-58, low dressing 50.75-52, Canner & Low Cutter 48.00-51.00, low dressing 44.00-48.00. Couple Yield Grade No. 1, 1830/2060 lbs. sl. bulls 66.75&68.50.

CALVES 751... Insufficient volume sold for slaughter to test trend on 20 head in sales going to slaughter.. Supply included 608 in graded sale of which all returned to farm. One Choice 305 lbs 100.00, one High Good 140 lbs. 88.00, few Standard and low Good 60/85 lbs. 40.00-55.00. Farm Calves: Holstein Bulls 120/125 lbs. 142.00, 110/115 lbs. 150.00-160, 95/105 lbs. 161.00-169, 80/90 lbs. 145.00-148.00, Small frame 90/115 lbs. 132.00-151, 80/85 lbs. 122.00; Hol. Heifers 80/115 lbs. 120.00-135.00, 75 lbs. 145.00. Mixed calves, beef cross 60/105 lbs. bulls and heifers 60.00-100.00.

SHEEP 37... SUPPLY MAINLY 20 TO 45 LBS SPRING SLAUGHTER LAMBS. Choice 20/45 lbs. 75.00-82.00. Slaughter sheep weak to 5.00 lower, Utility 7.00-10.00 - all cwt.

GOATS 0... No market test - all per head.

Peoria Sheep

Peoria, IL
April 9, 1991
SHEEP: 25 NOT ENOUGH FOR A MARKET TEST.

WOOLED LAMBS: Choice 80-100 lb 60.00-75.00, 60-80 lb 68.00-80.00, 100-120 lb 60.00-65.00.

SLAUGHTER EWES: Utility and Good 15.00-32.00; Yearlings and two-year olds 35.00-45.00.

GOATS: All goats sold by the head. Large 45.00-55.00, few Billies 60.00-80.00. Medium 30.00-45.00. Small, mainly kids, 20.00-30.00.

Lancaster Livestock

Wed., April 10, 1991
Cattle Calves Hogs Sheep Goats

Wed's Auction
16 0 301 0 0
Last Wed's Auction
24 1 152 0 0
Last Year's Auction
15 3 487 0 0

CATTLE: Insufficient volume of any one class to test trends.

VEAL CALVES: No market test.

HOGS: Barrows and gilts steady to 50 higher; sows 1.00-1.50 lower.

BARROWS AND GILTS: US 1-2 210-235 lb 50.00-51.00. US 1 Few 215-235 lb 53.00. US 1-3 210-260 lb 49.00-49.50. US 2-3 260-270 lb 44.00-47.00, 270-290 lb 41.00-44.00.

SOWS: US 1-3 300-475 lb 42.50-46.50, 475-625 lb 47.00-50.00.

SHEEP: No market test.

GOATS: No market test.

Lebanon Valley

Livestock

Fredericksburg, PA

April 9, 1991

CATTLE 138...PDA... Compared with last weeks market: Slaughter cows mostly 1.00 to 1.50 higher. Few Select slaughter steers 67.25-72.50, one low dressing 55.75. Two Choice sl. heifers 73.75&75.25, two Select 66.00&66.50, few Standard 57.25-61.75, few Utility & low Standard 49.25-53.00. Breaking Utility & Commercial sl. cows 53.00-55.25, few 58.25, Cutter & Boning Utility 48.75-54.75, few 56.00, Canner & Low Cutter 45.75-49, few down to 43.00, Shells down to 36.00. Few Yield Grade No. 1, 1280/1995 lbs. sl. bulls 64.25-65.25.

CALVES 174... Few Good vealers 78.00-97.00, one Standard and Good 95 lbs. 70.00, two Utility 60/65 lbs. 50.00&62.00. Farm Calves: Hol. Bulls No. 1, 80/125 lbs. 139.00-181.00, No. 2, 75/110 lbs. 110.00-137, few 155.00, few down to 97.00; No. 1, Hol. Heifers 80/125 lbs. 120.00-172, few down to 97.00. Beef cross 85/150 lbs. bulls and heifers 100.00-167.00.

HOGS 147... Barrows and gilts: uneven. Two Lots US No. 1-2 228/241 lbs. 49.75 and 48.75, 1-3 225/235 lbs. 48.25-49.10, lot 247 lbs. 47.75, 2-3 235/250 lbs. 47.50-48.85, lot 285 45.75, lot 277 lbs. 44.00, lot 1-3 209 lbs. 43.00. Sows: small supply unevenly steady. US No. 1 305/655 lbs. sows 44.80-50, mostly 47.25-49.50, No. 3, 420 lbs. 45.00, few Medium 240/375 lbs. 31.00-39.00. One Boar 41.00, Lt. Wt. one 34.00.

FEEDER PIGS 0... No market test - per head.

SHEEP 3... Few Slaughter sheep 8.00-16.00 - all Cwt.

GOATS 2... Large 75.00, Medium 57.00 - all per head.

New Holland

Livestock

April 11, 1991

Cattle Calves Sheep Goats
Today 1171 612 146 65

Last Thursday 1224 748 288 65

Last Year 793 490 267 203

CATTLE: Slaughter steers uneven, few High Choice and Prime steady, Choice mainly 75-1.25 lower with weights over 1450 lb 2.00 lower; slaughter heifers steady to weak; cows 50-1.00 higher; bullocks and bulls mostly steady. Supply included 62% slaughter steers and 28% cows.

SLAUGHTER STEERS: Small supply High Choice and Prime 3-4 1270-1320 lb 81.85-82.85, one lot 1370 lb 80.85; Choice 2-3 few 4 1125-1450 lb 77.00-79.85, few 80.00-80.50; Choice mostly 3 few 4 1450-1600 lb 74.50-76.00, Select and low Choice 2-3 1100-1425 lb 74.00-77.50, few 1450-1600 lb 70.00-74.00.

HOLSTEINS: Few High Choice and Prime 1200-1425 lb 70.85-72.35; Choice 1300-1600 lb 65.25-68.00; Select 1200-1600 lb 62.00-65.00.

SLAUGHTER HEIFERS: Choice 2-3 950-1225 lb 73.00-77.35; Select 2-3 850-1200 lb 70.0-72.50.

COWS: LO DRESSING BULK HI DRESSING Breaking Utility & Commercial 2-3 54.50-57.75 58.00-59.75. Commercial 3-4 52.50-54.50. Cutter & Boning Utility 1-2 51.50-52.50 52.50-56.50 56.50-58.00. Canner and low Cutter 44.75-48.75 48.75-52.00.

BULLOCKS: Choice 2-3 1075-1300 lb 65.50-67.75, couple 69.00-71.25; Select 1-3 950-1275 lb 63.75-65.50.

BULLS: Yield grade 1 1350-2450 lb 63.75-66.50, individual 1335 lb 69.00; Yield grade 2 1000-1400 lb 60.00-64.00.

VEAL CALVES: Vealers fully steady. Demand good for Holstein bulls and heifers to return to farm.

VEALERS: Few high Choice and Prime 205-350 lb 106.00-111.00; Choice 220-390 lb 96.00-105.00; Good to low Choice 255-480 lb 72.00-92.00; Standard and low Good 60-95 lb 50.00-60.00, few 95-110 lb 58.00-70.00. low Good 70-100 lb 50.00-62.00.

RETURNED TO FARM: Bulk 80-125 lb Holstein bulls 140.00-163.00, few 165.00-170.00; small frame 90-115 lb 100.00-140.00, few 70-90 lb 80.00-100.00; bulk 90-120 lb Holstein heifers 120.00-145.00, few 145.00-165.00.

SHEEP: Spring lambs fully steady; slaughter ewes firm.

SPRING LAMBS: Choice 60-95 lb 70.00-85.00, 30-55 lb 85.00-110.00.

SLAUGHTER EWES: Utility and Good 20.00-28.00; Yearlings and two-year olds 27.00-38.00.

GOATS: All goats sold by the head. Large 60.00-75.00, couple 80.00-97.00; Medium 38.00-55.00; Small, mainly kids, 22.00-35.00, few 12.00-20.00.

Lancaster County

Weekly

April 12, 1991

CATTLE CALVES

THIS WEEK 3200 1415
LAST WEEK 3316 1549
LAST YEAR 2378 1166

CATTLE: Small supply High Choice and Prime slaughter steers steady, bulk of supply 50-1.00 lower, instances 1.50 lower on weights over 1450 lb; slaughter heifers weak to 50 lower; cows 50-1.00 higher, instances 1.50 higher; bullocks and bulls fully steady. Supply included 58% slaughter steers, 7% slaughter heifers, 26% cows, 4% bulls, with the balance feeders.

SLAUGHTER STEERS: High Choice and Prime 2-4 1150-1425 lb 81.00-82.85, Choice 2 1070-1350 lb 81.00-82.50, Choice 2-3, few 4 1125-1450 lb 77.00-80.00, few 80.00-81.00, Choice mostly 3, few 4 1450-1600 lb 74.50-76.50, Select and low Choice 2-3 1100-1450 lb 74.00-77.50, few 1450-1600 lb 70.00-74.00. **HOLSTEINS:** High Choice and Prime 1250-1550 lb 70.75-73.10, Choice 1150-1625 lb 65.25-71.00; Select 1075-1500 lb 58.00-65.00.

SLAUGHTER HEIFERS: Choice 2-3 850-1350 lb 73.50-78.25, couple Choice 2 1150-1350 lb 78.50-79.25, Select 2-3 850-1200 lb 70.00-74.75.

COWS: LOW DRESSING BULK HI DRESSING Breaking Utility & Commercial 2-3 52.50-57.75 58.00-60.00 Commercial 3-4 51.00-54.50 Cutter and Boning Utility 1-2 51.50-52.50 52.50-56.50 56.50-58.50 Canner and low Cutter 44.50-48.75 48.75-52.00.

BULLOCKS: Choice 2-3 1100-1500 lb 65.50-71.00, few 71.00-73.75; Select 1-3 1050-1425 lb 63.00-67.00.

BULLS: Yield grade 1 1275-2400 lb 63.75-69.50, five head 1600-1860 lb 72.75-76.75; Yield grade 2 1075-1550 lb 60.00-64.00.

VEAL CALVES: Vealers steady, although large share sold to return to farm, slaughter calves steady, instances 5.00 lower on Choice.

VEALERS: Few high Choice and Prime 205-350 lb 106.00-111.00; Choice 220-390 lb 96.00-105.00; Good to low Choice 255-480 lb 72.00-92.00; Standard and low Good 60-95 lb 40.00-60.00, few 95-110 lb 58.00-70.00.

SLAUGHTER CALVES: Good and Choice 280-575 lb 75.00-85.00, few Choice 85.00-100.00.

RETURNED TO FARM: Bulk 80-125 lb Holstein bulls 140.00-163.00, few 165.00-170.00; small frame 90-115 lb 100.00-145.00; Bulk 90-120 lb Holstein heifers 120.00-145.00, few 145.00-165.00.

VINTAGE SALES STABLES, INC.



COMPETITION IS THE ADVANTAGE MARKET YOUR LIVESTOCK THE VINTAGE WAY



TUESDAY 11:00 A.M.

SLAUGHTER CATTLE AUCTION—STEERS, BULLS, HEIFERS, COWS, FEEDER CATTLE

7:30 P.M.

CALVES, SHEEP, GOATS * GET CALVES IN EARLY—OUR STATE GRADER STARTS AT 1:00 P.M.

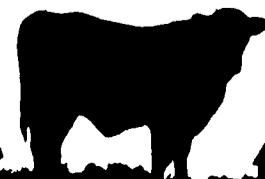
★NEW★

FEEDER & STOCKER ORDERS NOW BEING TAKEN

"A VINTAGE CUSTOMER IS A HAPPY CUSTOMER"

L. ROBERT FRAME, SR., PRESIDENT
GLENN S. FRAME, MANAGER
BUS (717) 442-4181
BUS (717) 768-8204
HOME (215) 458-8518
IRWIN MARTIN, FIELD REP. (717) 733-7434
KENNETH E. HERSHEY, FIELD REP. (717) 442-4874

TRUCKING SERVICE AVAIL-LOCAL & LONG DISTANCE (RT. 30, 10 MILES EAST OF LANCASTER IN PARADISE, PA)



LEBANON VALLEY LIVESTOCK MARKET, INC.

1 mile East of Fredericksburg along Rt. 22

PHONE JONESTOWN 865-2881

Flea Market Auction every Tuesday at 12:30. Tools, Eggs, Produce, etc.

Buyers & Sellers Welcome

B&R CATTLE CO.
RD 1, Marietta, PA 17547

Office Phone: (717) 653-8164
Specializing In Stockers & Feeders

JOHN BOWMAN
Ph (717) 653 5728

RON RANCK
Ph (717) 656 9849

HAY, STRAW & CORN — SALE —

Every Friday At 11 AM

GREEN DRAGON MARKET & AUCTION

RD No. 4 Ephrata, Pa. 717-738-1117
1 mile North of Ephrata on N. State St.

Out of State Buyers - Cash or Certified Check Only



Open 24 hours a day

365 days a year

(717)394-2611

AUCTIONS

MONDAY
9:00 A.M. - Slaughter Bulls, Heifers, Steers, Cows
10:00 A.M. - Goats, Veal Calves, Lambs
12 Noon - Slaughter Hogs
WEDNESDAY
8:00 A.M. - Slaughter Hogs
10:00 A.M. - Slaughter Bulls, Heifers, Steers, Cows
11:00 A.M. - Veal Calves, Lambs
FRIDAY
11:00 A.M. - Stocker and Feeder Cattle
SATURDAY
8:00 A.M. - Slaughter Hogs

Next Feeder Cattle Sale
Friday, April 19 - 11:00 A.M.

LANCASTER STOCKYARDS, INC.

1147 Lilitz Pike, Lancaster, Pennsylvania 17601

Serving The Community For 90 Years