

MAILBOX MARKET FOR SALE

2-1948 to 53 Ford V8 flat hd motors, 4 spd Ford F3 trans \$75 ea OBO. 1948 or 49 Hudson 6 cyl motor for parts or rebuild \$75 Montg Co. 215-539-5045.

Semen tanks and semen Dream Street bulls, Oddysey Cutlass, Colonel, Slim and more 302-834-7422

Int Motor V8, 345 CI rebuilt, runs perfect, \$590. Exchange, low miles, W E Hall, NC, De. 302-322-0922 anytime.

JD 467 baler, good cond. \$4000 NH 1044 120 bale stackwagon, good cond \$6500. Lehigh Co 215-967-5231 or 215-538-1175

Toggenberg doe 3 yrs old, fresh March 28th, 1991 milking well \$150 215-588-8505 Northampton

Case 4x16 hydraulic reset semi mount plow, \$400 IH 3x16 fast hitch plow \$300 Huntington Co 814-669-4938

Carrriage with rubber closed front good cond Lanc Co 717-442-8404

1987 Chevrolet Astro model CLT Mini-van, loaded, beautiful silver & white, 36K \$7500 1983 VW Jetta turbo-diesel \$2450 Loudoun Co 703-777-1520

Two 6000 gal fiberglass fert storage tanks with 3 HP/3 PH pump, hoses and valves \$5,500 Adams Co 717-528-4134

6 hole piggy feeders \$35 Farrowing crates w/wire \$125 12-ton round feed bin \$900 8 or 10 ft tubular gates \$20. Berks Co 717-933-8962.

Used Patz barn cleaner chain 240', 16" paddles, price negotiable Lanc Co 717-786-4589 or 786-1432

Massey Ferguson riding power grass mower \$200 Myers Ejector well pump, 80 ft. \$75 Lanc. Co 717-656-7789 or best offer

1st, 2nd cutting timothy green color, no mold \$65-\$85 ton delivery available IH 1466 fender tractor, 8 gears 2500 hrs. mint cond \$8000. Sch Co. 717-345-4109.

2 acre Farmette, double house, 1 new bath and kitchen, large bank barn 36x75 2 story 36x125 concrete block storage building. 717-665-5727.

JD 1240 cornplanter w/ insect., \$950, 4 complete plate units w/seed boxes for JD 7000 cornplanter. Leb. Co 717-866-2827.

8 ft. Brillion packer seeder, good cond. Lanc. Co. 717-733-3538.

4 AM air motor in good cond., \$40. Samuel E. King, 1685 Robert Fulton Hwy., Quarryville, Pa. 17566.

8' wide 22' long steel truck bed, 7' taper 6x5 sawed locust, posts \$5.50 ea Lanc. Co 717-786-2815.

Vicon 3 pt. fert spreader 1100 lb capacity, late model excel. cond Lanc. Co. 215-445-5697

30 New Berg 1A tie stalls, NH tank spreader, Ubler grain feed cart, 40x80 building dismantled 717-933-4616

Ford 8N w/highway mower, \$1950, Farmall H motor overhauled \$1050, Lester upright piano \$400 OBO Chester Co 215-869-9662/day, 215-869-2826/night

Pretzel salt used for feeding or weed control \$3/100 lb bag Lanc Co 717-738-3925

1000 gal honey wagon non-hydraulic, 469 haybine rolls, 1966 Ford truck for parts, 400 Cyclo corn planter 8R 215-286-5530

Int 3-16 #450 auto reset 3PT plow fair to good cond MF 195D tractor PS multi P just overhauled Lanc Co 717-859-2374

Raising whitetail deer, bottle feeding, breeding, worming, permits & others \$5 self addressed envelope to Robert Bittinger, 5136 Burkholder Rd., Chambersburg, Pa 17201

Large heavy duty drill press \$100, old architectural built in cupboards, several paneled doors, wide, old flooring Crawford Co 814-694-2500.

Acorn silo unloader, 16' rebuilt, ex cond Franklin Co 717-263-0080, or 717-263-2393.

Cab for JD 4020 heat & air in ex cond, \$1500 or \$1000 & your fender. Cumb Co 717-776-3359

Syracuse 75th anniv toy tractor, H beams, swinging drawbar for Ferguson 20-30, IH 110 hyd mower, Copeland 10HP refer, Ontario 9 hoe. Adams Co. 717-528-4914.

Old & dry mulch hay in barn bales 60¢, late summer mixed hay bales 80¢. Gettysburg. 717-677-8851.

Jamesway incubator 2900 capacity w/Mercury stat & automatic turner, plus hatcher for 2900 eggs. Lanc Co. 717-626-4465.

Coal/wood cookstove w/ warming closet, excel. cond., \$150. Lanc. Co. 717-684-4751.

Detroit 471 power unit w/ long PTO shaft Lanc. Co. 717-872-6594.

Cross slide for South Bend bench lathe \$15, turret tool post for 14" South Bend lathe \$10. Lanc. Co. 717-684-2337.

Used 1 1/2 ton stationary horizontal feed mixer, good cond, motor not included, \$300 Lanc Co. 717-665-2186 call daytime.

About 400 bd. ft. 1x3 yellow pine flooring, new but a little dusty, make offer. 717-354-7687 eves 7.30.

28' JD elevator \$300, Lely fert spreader \$500 fair cond Abner K King, 1329 River Rd., Drumore, Pa. 17518.

Hahn 5 HP roto-tiller \$75. Lanc. Co. 215-445-5797 after 4 p.m.

Bishman air bumper lift, 16" rotary-milling table, Ex-Cello boring machine, Hitachi compound sine magnet, Jacobs chucks Leb Co. 717-273-3982

#105 Cub Cadet 10 HP hydrostatic w/44" deck rear lift, good cond, \$750 neg. Leb Co 717-469-0356

French Frier gas 4 basket Wanted cotton candy machine & related carnival items Cumber Co 717-532-3501 eves

494A corn planter w/dry fert & insect, shed kept, good cond, \$400 OBO York Co 717-244-7866

Alfalfa second cutting no rain, no mold, good color, excel for horses or cows \$2 per bale Lanc Co. 215-267-2706 after 4 p.m.

Farmall M good rubber, good paint, runs good, \$1400 Lanc. Co. 215-267-6782

Sheet steel 1/2"x60"x105" 19¢ @ lb, also brand new 2-drawer filing cabinets, \$60, qverhead paint conveyor system, excel. cond., \$2500. Lanc. Co. 717-656-3050.

Winross model trucks, collection of 22 trucks, one or all, wide mouth qt. jars. Lanc Co 717-626-5026.

JD 3 pt model 1000 4 btm. plow, very good cond. Adams Co 717-677-7775.

Alfalfa mixed w/timothy & perennial ryegrass- all cuttings, barley straw. Lanc. Co. Furnace Rd., 717-786-8045 call between 6.30-7:00 a.m.

686 Int. diesel 3700 hrs., 20x7.5 Lickies silo w/ unloader, 8'x18' hay wagon. Lanc. Co. 717-872-5523.

F-12 rear steel wheels, also 100 unused cement blocks (corner blocks) \$25. York Pa 717-741-0274.

3 in. PVC irrigation pipe, 5 HP Honda water pump, both in excel. cond., used very little. Cecil Co. 301-392-5179.

IH 460, 560 maintenance manual, \$20, 1957 Chevrolet truck data book for salesmen, \$35, 1979 Fury operators manual, \$15. 716-554-6479.

1986 carriage for sale, good cond, fiberglass box, closed front. Christian Stoltzfus, 92 Stone Rd., Quarryville, Pa. 17566. Lanc. Co.

42 Chev. truck w/steel dump, 12' long needs some repair, motor runs & dumps. Lehigh Co. 215-285-6481.

JD model N manure spreader 55 gal. barrels fuel tank for on pickup truck. Franklin Co 717-762-7055

NH 488, 9' haybine \$3500, excel cond, Ford 145GT garden tractor w/a 48" mower, \$2000, like new cond. Milflin Co 717-543-6459

English Mastiff pups, show potential, excel temperament, outstanding companions Union Co 717-966-2093

AC HD5 trackloader new bottom, also old cletrack w/ steering wheel no engine Berks Co 215-683-7922

Powermatic drill presses on cast iron table 6 presses 1/2 HP 3 PH #2 not commercial duty, like new \$2600 or offer. Lehigh Co 215-756-6626

Case 555 haybine \$500, Mayrath 40' elevator \$400, fiberglass lick wheel tank \$175, all in good cond Lanc Co 215-445-5918

Cap & insert for full size PU \$285 or will sell separate. Cumber Co 717-258-3955.

McCormick PTO cornbinder \$600, Farmall F-14 restored \$600, F-12 sicklebar mower \$75, JD pedal tractors little 60, 3020. 717-264-0155

Sputnick for sale, good cond, w/new pair tires, best offer Dau. Co. Jake King, Box 287, Lykens, Pa. 17048.

Ford 172 cu. in. gas power unit 12 volt excel cond., complete \$1200. Ulster Co. N.Y. 914-691-2301.

18.4x28 TRS & TBS v. good 25% TD \$25 OBO, tine harrow for tye 10' no-till drill \$100 OBO, Asgrow 3935 cert. soybean seed. Lanc Co. 717-529-2723.

520 NH spreader for litter pan extension sides, set of 3' on cultipackers. Cumber. Co 717-776-7692.

Pilgrim goslings, rare old brd, ganders are white, hens are gray \$6 25 ea., sexed. Lanc. Co. 717-284-4802 please leave message.

Entire sharpening shop, over 15 Foley-Belsaw machines, plus many suppli items, \$10,000 or best offer, also NH 718 chopper. Lanc. Co. 717-656-8531.

2 egg coolers, 1-6 egg vacuum lift w/pump, 1-1/2 ton elect. hoist. Harford Co 301-836-1551 after 4 p.m

Allis Chalmers/Simplicity garden tractor, 10 HP Kohler eng. 42" mower, ex.

cond., \$800, Hahn core aerator- commercial model, Kohler engine, self propelled, hyd. lift, \$350. Del. Co. 215-358-5839.

MF 65 gas Sander loader, ROPS, wheel wghts., \$2,500. Preston W.Va. 304-864-6080 early mornings.

Generator like new used 2 hrs 120/240 AC voltage, Tecumseh engine. 215-445-4053.

500 bale good clean straw \$1.45 a bale, 500 bale mixed hay \$100 a ton at barn 717-786-3338

Buggy in good cond., new fiberglass shaves rehoked, also Singer sewing machine. Lanc. Co Daniel Esh, 228 Mt. Pleasant Rd., Paradise, Pa. 17562.

New F12 wide front steel & W12 front steel wheels, new fenders F12, W12, Want F12 belt pully or parts tractor. Ben J. Kinsinger, RR 1 Box 234A, Meyersdale, Pa. 15552.

419 Solo mist sprayer, 50 gal tank, 3 pt. hitch, used 10 hrs, cost \$2,000 new, \$1,200. 717-837-3101.

BLASCHAK COAL CORP.

FRANKLIN DIVISION

P.O. Box 12 Saint Nicholas

Mahanoy City, PA 17948

Exclusive Sales Of Blaschak Coal

BLASCHAK QUALITY COAL = MORE HEAT, LESS ASH

BLASCHAK



Saint Nicholas MAHANAY CITY, PA.

PREMIUM ANTHRACITE

COMPETITIVE PRICES

For Efficient And Reliable Service...

Contact Your Local Hauler, Or

CALL (717) 345-8486

Hours: Mon.-Fri.: 7 AM - 4:30 PM Sat.: 7 AM - 12 Noon

BINS & AUGERS

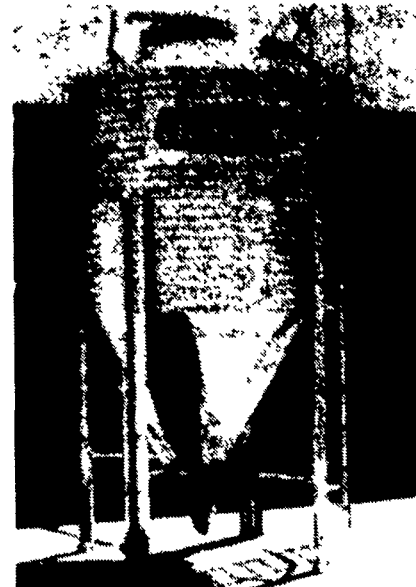
CHORE-TIME

AND

FLEX AUGER

FEED BINS

Your Best Buy



We Will Assemble And Deliver Bins To Your Farm!

The feed bin is the very heart of any feeding system. If the bin lets you down, the system quits.

That's why we put so many quality features into our complete line of feed bins - which includes 6-foot diameter steel or polyethylene (great for H.M. com), 6-foot, 7-foot, and 9-foot models. All are available in several capacities - so you have a wide selection of bins to fit your needs.

Here are just a few of the quality features that make our bins such an outstanding buy:

- Sturdy Ladder System
- All Bin Seams Are Double Caulked
- Choice of 16 or 25 Inch Hopper Opening
- All Galvanized Steel Parts

We Stock Truckloads Of Chore-Time Bins & Miles Of Chore-Time FLEX-AUGER

CALL OUR TOLL FREE CUSTOMER SERVICE NUMBER: 1-800-673-2580

Authorized **CHORE-TIME** Master Distributor

Northeast agri systems

NORTHEAST AGRICULTURAL SYSTEMS, INC.
FLYWAY BUSINESS PARK
139 A West Airport Rd.
Lititz, PA 17543
(717) 569-2702



STORE HOURS: Mon.-Fri. 7:30-4:30

Want To Increase The Organic Matter In Your Soil?

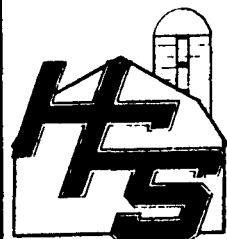
Use **SOIL AID**

- Contains A High Concentration Of Complex Humic Acids

Aids In

- Breaks Down Crop Residues
- Stimulates Plant Growth
- Solubilizes Sodium And Magensium, Loosens Tight Soil
- Contains A Specially Selected Surfactant - Will Save On Herbicides

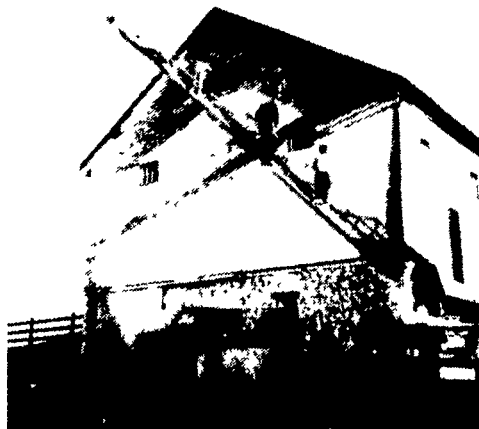
Our Products Are Known For Results. Remember, You Get More For Your Dollar At HFS.



HESS FARM SUPPLY INC.

675 S. Kinzer Ave. New Holland, PA 17557 Phone: 717-354-7972

SANDBLASTING AND SPRAY PAINTING WITH AERIAL LADDER EQUIPMENT



Farm Buildings — Feed Mills Commercial - Industrial

HENRY K. FISHER, INC.
667 Hartman Station Road
Lancaster, PA 17601
717-393-6530