

PARTS PRICED RIGHT CRAWLER TRACTOR PARTS CURRENTLY DISMANTLING
 AC, Cat, IHC, JD, Case, Michigan, Hough, Galion and others Loaders, dozers, graders, excavators, backhoes. Many parts removed & checked, ship anywhere.
NATIONWIDE PARTS LOCATER SERVICE NEW ARRIVALS FOR DISMANTLING
 JD 860A Scraper, Michigan 600 Skider, Cat 920, Case 850. And more-- inventory changes weekly.
BALANDA EQUIPMENT
 PO Box 407
 Route 29
 Palm, PA 18070
 1-800-322-8030

Rambird 70B Sprinklers w/ alum. risers, \$35/each. 814/735-4660. Can Ship UPS.

Rio 16' flatbed truck, 26,000 GVW, Ford V-8 powered, make good farm or lumber truck. Must sell, best reasonable offer (or a little less) (717)392-4596.

Seed Potato Cutters: Cummins Splitter, \$250, Ditzel Witzel, \$350; Ditzel Witzel, \$600. 516/324-1492.

Shur Flo Pumps 12-Volt all sizes available, call for special prices starting at \$65.00. 717-569-3359.

SKID STEER LOADER JD 375, 1988, 300 hrs., same as new, \$6,000. 301-833-9091

SKID STEER LOADER CASE 1845C, 1987, 1,500 hrs., \$7,800 301-833-9091

Skinner 3-pt. mechanical type tree transplanter. Good operating condition. Tioga Co. 717/659-5589.

Sprayer unit, Freund 4 cyl piston pump, 500 gallon tank on trailer plus extra pump 609-799-6391.

Stanhay 3pt 2 row precision seeder S-870 units. Plants small vegetable and flower seeds accurately, \$1,600 Zimmerman irrigation "Super Layer" for 4" plastic mulch Only used 15 acres Cost \$900, sell for \$600 (717)684-5846.

Steel Wheels, 18x62", off JD 2755, \$400, possible delivery. JD 16A flail chopper. 717/367-2116.

Stoltzfus wet lime spreader, \$3,500 OBO JD 605 fertilizer buggy, \$1,000 OBO Roy Stanley, (301)253-0575

Threshing Machine, Huber Roto-Rack 814-395-5136, 4 1 2 - 3 5 2 - 1 9 3 4 , 412-637-3511

TIRONIE'S TARPS SHIPPED ANYWHERE 1-800 874-2928

To Be Sold on 4/13/91 at Public Sale at Isenlocks Auction, Rt 24 S, New Park, PA Model 370 GT Corn Batch Dryer, excellent condition 717/993-2885

Two 6000 gallon upright fiberglass fertilizer storage tanks w/hoses and 5hp 3ph elect flomax-8 pump and valves \$5500. Adams Co (717)528-4134

USED TRACTOR PARTS, also rebuilt clutches and torques We ship UPS Hill-T Farm Sales = Service, 4295 Richmond Palestine Road, New Madison, Ohio 45346 513-548-0718

Used underground fiberglass tanks, 1,000 gallon & up Call for quote 215-356-2462

Vermeer Mower Conditioner 504C, 605G 5ft Bushhog Hampshire 304 496 8132

Vermeer round balers, new and used Vermeer round bale wrappers and film wrap Vermeer 23' twin rake NH haybine, disc mowers, 20' Lowboy, and Dyna-hoe and loader w/ cab (412)423-4076

No-Till Planter, 6 row, White 5100 w/Yetter Coulters, dry, good condition, \$5,000. 215/255-4239.

Old Farm and Construction Toys, Trucks, Literature, Signs, Pedal Tractors, Advertising Memorabilia, etc. for sale. \$5 00 for 50 page list Shown by appointment. I Buy-Sell-Trade. Lloyd J Wenger, 831A Hilltop Rd., Myerstown, PA 17067 717/866-7147 evenings.

Oliver 88G, WF, very nice, good rubber, \$2,000. Blair Co 814/695-1250.

Oliver Super 55, Gas, good condition, No. York Co. \$2750. 717-766-5414.

Oliver White 1555 diesel tractor, excellent condition, rear tires like new, fuel injectors and fuel injection pump completely rebuilt last fall, reg transmission with hydro-static drive, 2 new 1125 CCA batteries and all new battery cables. 717/527-4412.

Onan gasoline generator power plant, used less than 50 hours, 12.5KW, 120/240V, \$2,900. After 5pm, (717)532-7252.

WANTED: 7 or 5 tooth chisel plow, trailer type, high clearance 717/872-5178.

For Sale: D6 Caterpillar and D7 Caterpillar both with Pony motor. 814/832-2274

WANTED: MC PTO Corn binder, also silage cutters. Write to Samuel F. Stoltzfus, 514 Lee's Bridge Rd., Nottingham, PA 19362.

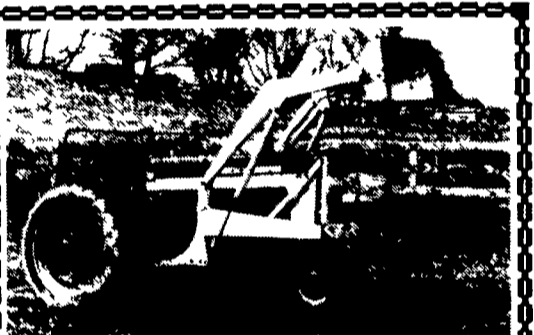
WANTED: NH fine litter pans w/hardware to fit 519, 679, 520 & 680 spreaders. 717-949-3074 or 703-879-9926



IH 100E \$12,500 (717) 859-3283

J & F Equipment (717) 859-3283
 No Reasonable Offer Refused

IH 100E Crawler Loader Backhoe, \$12,500
 Case 1150 4-Way Blade \$6,000
 JD 450 B Crawler Loader, \$9,000
 JD 350 B Crawler Loader, \$9,000
 JD 2010 Crawler Loader, \$5,800
 JD 350 B 6-Way Blade \$7,500
 IH TD9 Crawler Loader, \$3,000
 Ripper for JD 350 or 450, \$750



Farmall 450 w/2001 Loader, Gas Hyd. Dump, Good Rubber, Runs Good. \$2,000 301-833-9091

FARM EQUIPMENT FOR SALE All Excellent Condition

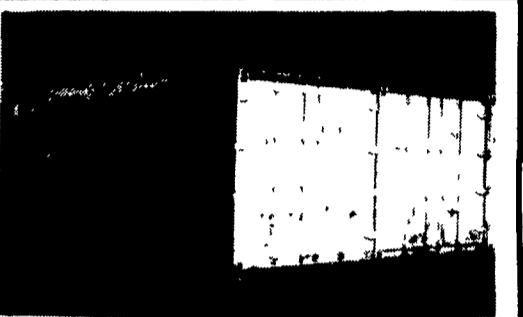
JD Disc, Model 210, 12' 10" \$2,500
 Vicon Spreader, PS-2000 \$1,200
 Manure Spreader, JD, Model 54..... \$1,500
 Forage Box, Artsway Dion w/Roof And NH Running Gear \$1,500
 Case IH Packer Mulcher, 12'2", Model 415..... \$4,000
 IH Grain Drill, Model 5100, 18x7, DD..... \$3,000
 Hay Wagon..... \$1,000
 Cow Loading Ramp \$400
Northern Chester Co. 215/827-7687

GOOD USED FARM MACHINERY

NH 489 Haybine, like new..... \$6,250
 NH 848 Baler, baled 250 bales \$9,250
 NH 492 Hyabine w/hyd. hitch.. \$8,750
 JD 337 Baler w/#30 kicker..... \$6,500
 JD 3960 Harvester, 2 row CH.. \$5,800
 NH 489 Haybine, nice..... \$4,300
 Case IH 8420 Round Baler, 2 yrs. old..... \$4,000
 JD 336 Baler \$30 kicker..... \$3,500
 NH 718 Harvester, 822 CH, GH..... \$2,500
 Brillion 10' ~~SOLD~~ mulcher, nice. \$2,200
 Pequea 710 Tedder, 7' PTO, NEW..... \$1,350
717/933-8134 Can Deliver, Will Trade



JD 3020 Diesel 2-Outlet WF Runs Exc. \$5,500 (301) 833-9091 (Not Actual Photo)



(2) 40' Containers, Both Excellent Cond. One Reefer With New Comp. (Elec) Under Power \$3,000 Container Without Refrigeration \$1,500 Call Alan Anytime (301) 486-6691

Help restore lost power and improve fuel economy

TURBO CHARGER From \$250⁰⁰

Remanufactured to OE specs

All Makes Serviced Factory Authorized Service Since 1952

Penn Diesel Service Co.
 Interstate 81, Exit 27, Harrisburg, PA 17112
(717) 545-4207/(800) 535-2913
 Dealer/Reseller Discounts To Qualified Accounts

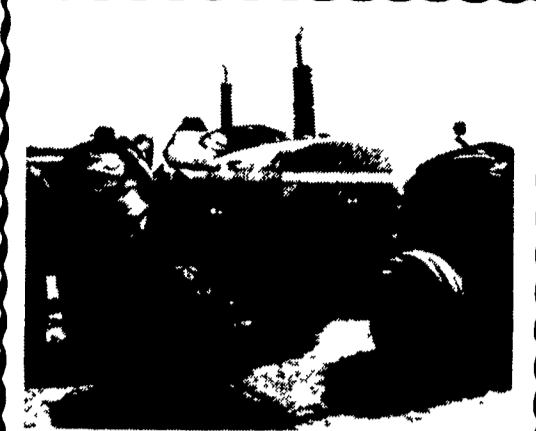
NEW EQUIPMENT
 Deutz Allis 6260 2 WD w/Loader
 Deutz Allis Disc 12'2" & 13'6"
 GP 2.50 Round Baler
 500 Gal. (Cagle) Sprayer
 750 Gal. (Cagle) Sprayer
 Deutz Allis rake & tedder
 Deutz Allis mower conditioner
 Deutz Allis 1500 min-till
 Kidd bale choppers

USED EQUIPMENT
 MF 850 Combine w/6RC head, 15' G. head
 36' Bale elevator w/motor
 Feed wagon w/scales
 IH 800 4 RW planter
 F2 Combine w/430 & 438 corn head & grain head
 2 Used AC 4 R no till planters

Artsway Silamix Feed Wagon In Stock Now. Call For Special Price

COMPARE OUR PRICES ON WOODS MOWERS
B. EQUIP. INC.
 8422 Wayne Highway
 Waynesboro, Pa. 17268
717-762-3193

For Sale: 1070 Case Diesel Tractor With Turbo, Good Condition \$9,900 215-484-2576

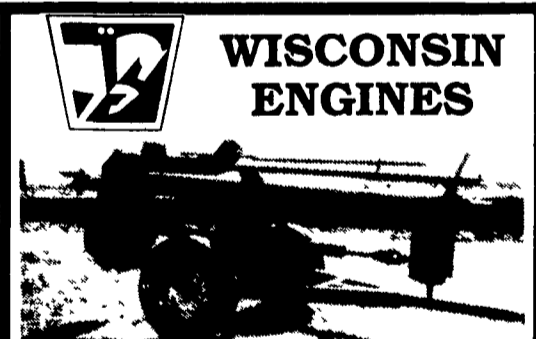


JD 2240 Runs Good \$5,800 301-833-9091

HESSTON CORPORATION
NEW IDEA KUBOTA Nothing like it on earth!
NEW EQUIPMENT SPECIALS
 Hesston 8200 12' SP Windrower
 Hesston 65-56 Tractor, 60 HP
 Hesston 45-66 Tractor, 40 HP
 Hesston 80-66 Tractor, 70 HP

USED EQUIPMENT
 NI 3639 Tandem Spreader, 2 Yrs. Old
 Goosen Stationary Bale Chopper
 Bush Hog 15' Wing Mower 1000 RPM
 Kuhn GMD 66 Disc Mower
 Woods 10' Offset Rotary Mower
 1200 12 Hp Grasshopper
 Yanmar 146 14 Hp, 48"
 Hesston 4800 Big Square Baler
 Hesston 1150 12' Windrower
 Cub 154 LoBoy w/Mower
 JD 4010, WF
 Hesston 5545 Round Baler, Like New
 Kubota L2550 w/60" Deck
 718D 18 HP Grasshopper

STOLTZFUS FARM SERVICE
 Cochranville, PA 215-593-2407



WISCONSIN ENGINES
Liquid Manure Pumps Portable & Stationary USED EQUIPMENT

(New) Hesston 1120 Haybine \$7,200
 NEW Hesston 1120 Haybine \$7,200
 (2) NH 256 Hay Rake \$1,650 Ea.
 NH 256 Hay Rake, Like New \$1,795
 NH 311 Baler, Like New \$5,950
 Brillion 4 Row Cultivator \$1,395
 Brillion 12 Ft Cultpackers \$900
 ★ NEW★ NI 323 Corn Picker \$5,000
 NI 323 Corn Picker ... \$3,100

USED TRACTORS

Ford 800 \$2,950
 IH 560 Diesel \$3,750
 IH 1066 w/Cab, 18 4x38 Tires, Excell \$9,500
 IH 806 \$5,500
 AC XT190 Rebuilt Engine \$7,000
 MM G1000 Vista, Cab, 18-4-38 Tires \$5,400
 JD 730 Direct Start \$3,250
 Ferguson 30 \$1,900
 Allis 180 \$4,900

AVCO MILLER'S REPAIR
 1 Mile North of Bird In Hand 8 Miles East of Lancaster
 RD 1, Bird In Hand, PA Ph. 717-656-6109