

# NC+ Expands Seed Lineup

LINCOLN, Neb. — NC+ Hybrids has released several new corn, soybean, forage and alfalfa products for planting in Pennsylvania in 1991, according to NC+ research director Bernie Trausch.

### Corn

NC+ 1498- 94 day hybrid. Very attractive, medium-tall plants, performs well at high populations. Handles stress and stands strong.

NC+ 2165- 99 day hybrid. Has good drydown, stress tolerance and excellent standability.

NC+ 4275- 108 day hybrid. Outstanding companion for NC+ 4616. Excellent yield potential and good standability.

NC+ 5212- 112 day hybrid. This short attractive hybrid puts down a strong root system and shows excellent standability and stay-green characteristics.

NC+ 5717- 114 day hybrid. Has very high yield potential with high test weight and excellent grain quality. Good stay green and some tolerance to corn borer.

NC+ 6260- 115 day hybrid. Produces medium tall plants with a strong root system and excellent ear retention.

NC+ 8100- 120 day hybrid. Excellent yield potential, responds well to high populations.

### Soybeans

NC+ 1A99- Late Group I. High-yielding, medium-height soybean with excellent emergence and high phytophthora tolerance.

NC+ 2A70- Late Group II. Develops a medium-height bushy plant with excellent standability.

NC+ 3A81- Late Group III. Medium tall plants have strong

emergence, excellent standability and resist shattering.

NC+ 4A46- Mid Group IV. With high ratings in all categories, this new variety will be a strong contender for leadership in the Group IV maturity zone.

### Forages

SWEETLEAF- Sorgo x sudan-grass. Sorgo parent is a sweet sorghum, providing added taste appeal. Finer stems, more leaves and tillers, top yields.

NUTRI-CANE- Sorgo x sorgo. Fast emergence, stands up to

stress, extra sweetness, good yields, an "easy-care" forage sorghum.

### Alfalfa

JADE- Tremendous state trial performances in Pennsylvania, Nebraska and Minnesota. Outstanding yield, forage quality and

disease resistance.

In addition to the new NC+ seed products, NC+ dealers also offer bional hay and silage inoculants. For more information on NC+ products, contact NC+ District Sales Manager Ron Dodds of Mifflintown, (717) 436-5514.

## Tub Grinder Uses Heavy Duty Rotor

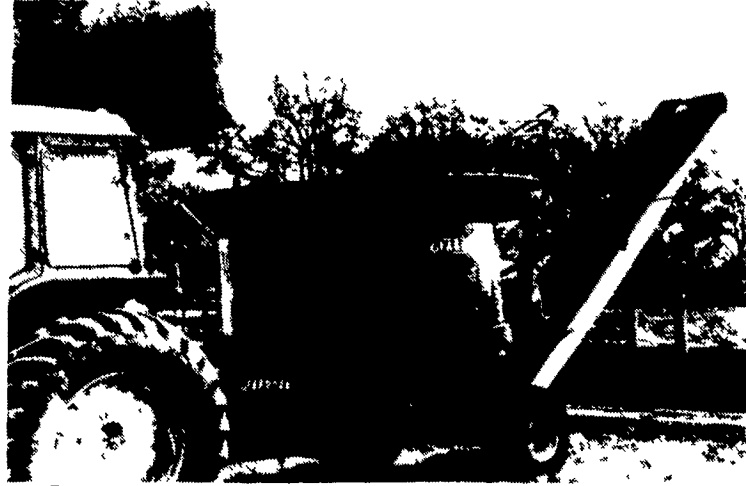
EXCELSIOR, Minn. — A rugged and versatile agricultural tub grinder for 80 to 150 horsepower tractors has been introduced by Farmhand, Inc. The HG3000 tub grinder is ideal for grinding big or small round bales, square bales, loose hay, stover, small grains, or ear corn.

Grinding is done by a heavy-duty 32" rotor with 1/2" thick hard-faced, reversible hammers. Materials are ground in a two-state action as hammers first slice

across a shear bar, then force material through a screen. Sixteen screens with openings from 1/4" to 4" are available.

An electronic governor automatically regulates infeeding to the rotor and assures smooth and continuous grinding under all load conditions.

Farmhand products are manufactured in Grinnell, Iowa. For more information, contact Farmhand, Inc., P.O. Box 1500, Excelsior, MN 55331, (515) 236-6571.



The HG3000 tub grinder is ideal for grinding big or small round bales, square bales, loose hay, stover, small grains, or ear corn.

## Companies Clarify Position On Banded Application

WAYNE, N.J. — The American Cyanamid Company and Du Pont have simultaneously submitted label changes to the Environmental Protection Agency (EPA) involving the use of Accent herbicide following BANDED applications of COUNTER® 20CR® systemic insecticide-nematicide. Authorization from the EPA is expected shortly.

The new label information will provide clarification regarding the

use of Accent following all formulations of COUNTER systemic insecticide-nematicide and will resolve issues that have been raised regarding the use of these two products.

The Accent label no longer prohibits the use of Accent following banded at-planting application of COUNTER 20CR. The COUNTER 20CR label does, however, specifically recommend an application of Accent following a

banded at-planting application of COUNTER 20CR.

Both labels prohibit the use of Accent following all application methods of COUNTER 15G, as

severe crop injury may result. Additionally, both labels prohibit the use of Accent following COUNTER 20CR when applied in-furrow or over-the-row at cultivation.

**MILK AMERICA'S HEALTH KICK**

**GSI**

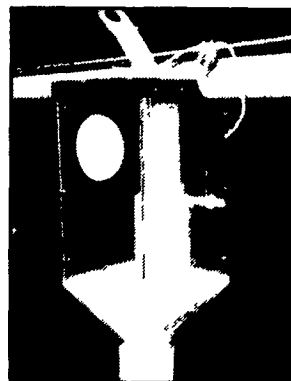
# BINS & FLEX-FLO AUGER SYSTEMS



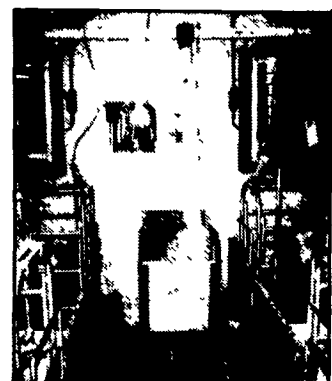
GSI GALVANIZED BULK BINS



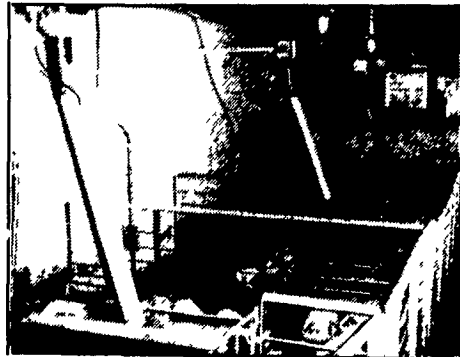
FINISHING BUILDING INSTALLATION



CLEAR PLASTIC ADJUSTABLE SOW DROP



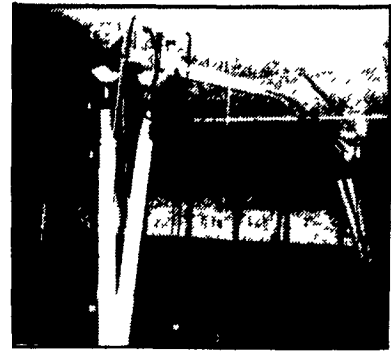
FARROWING ROOM INSTALLATION



NURSERY INSTALLATION



GESTATION INSTALLATION



POULTRY INSTALLATION

TRI-COUNTY Can Custom Design, Install And Service All Of Your Bulk Bin And Feed Delivery Needs. Custom Made Boots And Drops Are Also Available.



**TRI-COUNTY**

CONFINEMENT SYSTEMS INC.

608 E. Evergreen Rd., Lebanon, PA 17042

Ph: 717-274-3488

Hours: Mon.-Fri.

7:00 to 4:30;

Sat. 8:00 to 12:00