

Greencastle Livestock

Greencastle, Pa.

Monday, Mar. 25, 1991

SLAUGHTER CATTLE RECEIPTS. 583 HD SLAUGHTER STEERS: 180 HD. TREND STEADY. HIGH CHOICE & PRIME 2-4 79.00-83.00, CHOICE 2-3 95.00-107.50 LBS. 73.00-77.00; CHOICE 2-3 107.50-137.50 LBS 74.00-79.50, CHOICE 2-3 OVER 137.50 LBS. 71.00-75.75, CHOICE 4, ALL WEIGHTS 71.00-75.00, SELECT AND CHOICE 1-2 95.00-110.00 LBS 72.00-76.00; SELECT AND CHOICE 1-2 1100-1375 LBS 70.00-74.50, SELECT AND CHOICE 1-2 OVER 1375 LBS. 67.00-71.75.

HOLSTEINS. CHOICE 2-3 1050-1450 LBS. 67.00-73.50; SELECT 1-2 1050-1450 LBS 62.00-66.50

SLAUGHTER HEIFERS: 73 HEAD. TREND STEADY. CHOICE 2-3 850-1000 LBS 68.00-75.00; CHOICE 2-3 1000-1250 LBS 73.00-79.00; CHOICE 4 ALL WEIGHTS 70.00-75.00, SELECT AND CHOICE 1-2 850-1000 LBS 66.00-72.50, SELECT AND CHOICE 1-2 1000-1250 LBS. 71.00-76.00.

HOLSTEINS CHOICE 2-3 1000-1350 LBS 65.00-70.00, SELECT AND CHOICE 1-2 1000-1350 LBS 59.00-64.50.

SLAUGHTER BULLS: 27 HEAD. TREND STEADY. YG#1 ALL WEIGHTS 64.00-72.50, YG#2 ALL WEIGHTS 57.00-63.00

BULLOCKS 4 HEAD SELECT 1-2 950-1250 LBS 68.00-74.50.

COWS 299 HEAD. TREND: STEADY BREAKING UTILITY AND COMMERCIAL 51.50-56.50, CUTTER AND BONING UTILITY 51.00-55.75, CANNER AND LOW CUTTER 50.50 AND DOWN.

STOCKER AND FEEDER CATTLE RECEIPTS: 220 HEAD. TREND STEADY TO 500 LOWER. BEEF TYPES 200-400 LBS. STEERS 95.00-119.00, BULLS 90.00-105.00, HEIFERS 80.00-99.00, 400-600 LBS STEERS 80.00-100.00, BULLS 70.00-92.00, HEIFERS 75.00-90.00, 600-800 LB. STEERS 75.00-88.00, BULLS 70.00-75.00, HEIFERS 68.00-77.00; 800-975 LBS. STEERS 70.00-77.50, BULLS 60.00-70.00, HEIFERS 68.00-72.00.

HOLSTEINS & DAIRY CROSS

200-400 LBS. STEERS 85.00-102.00, BULLS 85.00-101.00, HEIFERS 88.00-120.00, 400-600 LBS STEERS 70.00-80.00, BULLS 65.00-75.00, HEIFERS 69.00-79.00, 600-800 LBS. STEERS 68.00-73.00, BULLS 60.00-65.00, HEIFERS 62.00-69.00, 800-975 LBS. STEERS 58.00-66.50, BULLS 54.00-62.50, HEIFERS 58.00-65.00

CALVES: 461 HD. VEAL CALVES TREND STEADY CHOICE 150-300 LBS. 90.00-109.00, GOOD 150-300 LBS 80.00-90.00; GOOD 100-150 LBS 70.00-80.00, GOOD 80-100 LBS 60.00-70.00, STANDARD 80-100 LBS. 50.00-60.00, STANDARD 80 LBS. & DOWN 50.00 & DOWN CALVES RETURNING TO FARM: TREND: STEADY. HOLSTEIN BULLS OVER 100 LBS. UP TO 170.00, UNDER 100 LBS. UP TO 165.00; HOLSTEIN HEIFERS, OVER 100 LBS. UP TO 181.00, UNDER 100 LBS. UP TO 170.00; BEEF TYPE BULLS, OVER 90 LBS. UP TO 200.00, BEEF TYPE HEIFERS, OVER 90 LBS UP TO 170.00

SHEEP AND LAMBS: 200 HD. TREND: STEADY TO STRONGER. CHOICE 80-100 LBS. 50.00-54.00, 100-120 LBS. 47.00-51.00, 120 LBS. & OVER 42.00-47.00. MEDIUM & GOOD ALL WEIGHTS 45.00-54.00, LIGHT LAMBS, SPRING ALL WEIGHTS 70.00-120.00.

SHEEP EWES LEAN 18.00-24.00; EWES FAT 12.00-17.50, YEARLINGS 22.00-29.00; BUCKS 11.00-17.00.

GOATS: 90 HD SMALL 25.00-49.00, MEDIUM 30.00-54.00; LARGE 50.00-77.00.

HOGS, SOWS & BOARS: 132 HD HOGS: BARROWS & GILTS. TREND 1.00 LOWER. 210-250 LBS. 49.00-51.00, 250-260 LBS 48.00-49.00, 260-270 LBS. 46.00-48.00; 270-300 LBS. 44.00-45.50

LIGHT HOGS: 140-180 LBS. 39.00-41.50, 180-210 LBS. 42.00-45.00 SOWS TREND STEADY. GOOD SOWS UNDER 400 LBS. 42.00-45.00; GOOD SOWS OVER 400 LBS 44.00-47.50, CULL SOWS ALL WEIGHTS 40.00 & DOWN.

BOARS: TREND: STEADY TO 1.00 LOWER. 180-210 LBS 38.00-40.00, 210-260 LBS. 39.00-41.50, 260-300 LBS 36.00-39.00, 300 LBS. & OVER 35.00-38.00.

SALE EVERY MONDAY AT 2 00 PM & EVERY THURSDAY AT 1.00 PM

HAY & STRAW SALE EVERY MONDAY & THURSDAY AT 11 30 A.M. SPECIAL FEEDER CATTLE SALE FRIDAY, APRIL 5TH, 1991 AT 7.15 P.M. SPECIAL FEEDER PIG SALE. SATURDAY, APRIL 27TH, 1991 AT 1 00 P.M.

New Wilmington Livestock

N. Wilmington, PA

March 25, 1991

CATTLE 207...PDA...Compared with last weeks market: Slaughter cows 1.00 lower. Individual Choice slaughter steer 75.75, one Select 71.50; few Standard Holsteins 58.00-60.00, Utility 55.00-60.00. One Choice sl. heifer 70.00, one Select 69.50, few Standard 56.50-63.75. Breaking Utility & Commercial sl. cows 50.00-54, one 57.00, Cutter & Boning Utility 47.50-52.00, Canner & Low Cutter 40.00-48.00, Shells down to 30.00. Few Yield Grade No. 1, 1260/2150 lbs. sl. bulls 59.75-64.75, one No. 2, 1400 lbs. 58.00. Feeder Cattle: Few Medium Frame No. 1, 350/500 lbs. steers 84.00-99.00. Few Medium Frame No. 1, 350/500 lbs. heifers 75.00-84.50. Medium & Large No. 2, 560/755 lbs. bulls 68.50-80.00.

CALVES 271...Good, one wealers 111.00, Standard & Good 90/120 lbs. 56.00-70.00, 60/85 lbs. 40.00-58.00, lot Utility 53 lbs. 43.00. Farm Calves: Hol. Bulls No. 1, 80/135 lbs. 120.00-160.00, #2, 85/135 lbs. 77.00-122.50; No. 1, Hol. Heifers 85/155 lbs. 110.00-145.00. Beef cross 60/130 lbs. bulls & heifers 100.00-240.00, few down to 70.00.

HOGS 388...Barrows and gilts: 2.50 to 3.00 lower. US No. 1-2 225/260 lbs. 48.50-49.35, 1-3 215/260 lbs. 47.50-48.75, 2-3 230/270 lbs. 45.00-47.00, 1-3 210/215 lbs. 46.00-48.00. Sows: US No. 1-3 320/585 lbs. sows 45.00-49.50, one 54.00. Few Boars 36.00-38.00.

FEEDER PIGS 51...Few US No. 1-3 35/50 lbs. feeder pigs 34.00-50.00 --- all per head.

SHEEP 326... BULK OF SUPPLY SPRING SLAUGHTER LAMBS SOLD TO EASTER TRADE ...High Choice & Prime 20/40 lbs. spring slaughter lambs 95.00-128.00, 40/60 lbs. 85.00-100.00, 60/90 lbs. 80.00-99.00, Choice 20/40 lbs. 72.00-95.00, 40/60 lbs. 70.00-85.00, 60/80 lbs. 60.00-75.00, lot 100 lbs. 60.00, Good & Choice 30/40 lbs. 58.00-73, 40/60 lbs.

45.00-60.00; Good & Choice 75/90 lbs. wool lambs 45.00-56.00 - all cwt. Slaughter sheep 9.00-19.00.

GOATS 44...Few Large 59.00-68.00, Medium 28.00-45.00, Medium & Large Kids 25.00-40.00, Small 10.00-25.00 --- all per head.

Eighty-Four Livestock

Eighty-Four, PA

March 25, 1991

CATTLE 192...PDA...Compared with last weeks market: Slaughter cows .50 to 1.00 lower. Few Select slaughter steers 73.00-75.00, Standard 67.00-70.00. Few Choice sl. heifers 72.00-74.50, few Select 66.00-71.50, Standard 60.00-64.00. Breaking Utility & Commercial sl. cows 50.00-54.50, one high yielding Commercial 60.00, Cutter & Boning Utility 47.00-51.00, Canner & Low Cutter 40.00-47.50, Shells down to 18.00. Yield Grade No. 1, 1400/2450 lbs. sl. bulls 57.00-64.00, few No. 2, 1000/1400 lbs. 50.00-54.00. Feeder Cattle: Medium & Large Frame No.1, 340/500 lbs. steers 85.00-107.00, few 270 lbs. up to 113.00. Medium & Large Frame No. 1, 230/500 lbs. heifers 80.00-97.00. Medium Frame No. 1, 350/500 lbs. bulls 84.00-102.00, few No. 2, 400/450 lbs. 80.00-82.00.

CALVES 226...Few Choice wealers 107.00-118.00, few Good 94.00-101.00, Standard & Good 90/120 lbs. 55.00-69.00, 60/85 lbs. 45.00-58.00, few Utility 45/60 lbs. 31.00-38.00. Farm Calves: Hol. Bulls #1, 90/125 lbs. 110.00-165.00, No. 2, 75.00-120.00; No. 1, 85/115 lbs. Hol. Heifers 100.00-134.00. Beef cross 85/120 lbs. 100.00-230.00.

HOGS 95...Barrows and gilts: .50 to 1.00 lower. US No. 1-3 220/240 lbs. 48.00-48.50, 2-3 212/235 lbs. 47.00-48.00, 2-4 250/285 lbs. 44.75-46.00. US No. 1-3 350/550 lbs. sows 46.00-48.00, 2-3 300/600 lbs. 40.00-45.00. Boars 35.00-37.00.

FEEDER PIGS 0...No market test --- per head.

SHEEP 577...SPRING SLAUGHTER LAMBS: BULK OF SUPPLY SPRING SLAUGHTER LAMBS SOLD TO EASTER TRADE ...High Choice & Prime 20/40 lbs. spring lambs 97.00-122.50, 40/60 lbs. 90.00-101.00, 60/80 lbs. 78.00-90.00, Choice 20/40 lbs. 70.00-92.50, 40/60 lbs. 65.00-75.00, few Good to low Choice 20/40 lbs. 65.00-70.00; High Choice 20/40 lbs. 65.00-70.00. Slaughter sheep 13.00-20.00

- all Cwt. GOATS-100...Large 50.00-64.00, Large Kids 55.00-65.00, Medium 27.00-36.00 --- all per head.

Lebanon Valley Livestock

Fredericksburg, PA

March 26, 1991

CATTLE 170...PDA...Compared with last weeks market: Slaughter cows steady to 1.50 lower. Few Select slaughter steers 68.00-72.00; few Choice 1130/1530 lbs Holsteins 68.50-71.00, Select 1115/1515 lbs. 63.25-69.25. One Choice sl. heifer 73.00, one Select 69.00, few Utility & low Standard 45.00-49.75; few Choice Holsteins 65.00-70.25, two Select 55.75&58.75. Breaking Utility & Commercial sl. cows 50.75-54, few 54.50, few low dressing down to 47.75, Cutter & Boning Utility 47.50-53.75, few 54.50, Canner & Low Cutter 44.25-48.75, few Shells down to 42.00. Few Select Holstein bullocks 61.75-67.00, few Standard 53.25-60.75. Few Yield Grade No. 1, 1665/2090 lbs. sl. bulls 62.00-71.25.

CALVES 196...Two Choice wealers 93.00&103.00, few Good 78.00-85.00, few Standard and Good 70/110 lbs. 50.00-56, one 68.00, few Utility 50/70 lbs. 40.00-45.00. Farm Calves: Hol. Bulls No. 1, 90/125 lbs. 140.00-170, few down to 120.00, No. 2, 80/115 lbs. 100.00-145, few down to 62.00; No. 1, Hol. Heifers 80/120 lbs. 100.00-150.00, few No. 2, 70/85 lbs. 85.00-95.00. Few Beef cross 85/115 lbs. bulls and heifers 85.00-147.00.

HOGS 129...Barrows and gilts: Three Lots US No. 1-2 230, 245 and 257 lbs. 48.60, 50.00 and 48.00, few 1-3 230/240 lbs. 48.25-48.75, lot 311 lbs. 46.25, lot 2-3 202 lbs. 40.25, few 1-3 195 lbs. 43.25. Sows: small supply unevenly steady. Few US No. 1-3 340/465 lbs. sows 44.00-46.50, 530/715 lbs. 47.00-48, one 48.75, few Medium 220/390 lbs. 32.00-41, mostly 36.00-38.00. Few Boars 37.25-39.25, few Lt. weights 40.25-41.25.

FEEDER PIGS 0...No market test - per head.

SHEEP 9... BULK OF SUPPLY SPRING SLAUGHTER LAMBS SOLD TO EASTER TRADE ...Choice & Prime 20/55 lbs. spring slaughter lambs 73.00-86.00, 1(3 head) 100.00-117.00. --- all Cwt.

GOATS 1...Medium 52.00 - all per head.

HORSE SALE
FRI. APRIL 5 - 7:00 P.M.
TACK 6 P.M.
HORSES HITCHED 12 NOON

NEW HOLLAND SALES STABLES INC.
THE ACTION AUCTION

Select Load Cows From Bradford and Tioga Counties. Some Top Individual Animals. Selling Wed., April 3 Dairy Sale

LIVESTOCK IS OUR ONLY BUSINESS

MONDAY

SLAUGHTER HOGS



EARLY BIRD HOG SALE
8:00 A.M.

Sell Your Hogs At New Holland Sales Stables, Inc. See them weighed, sold and pickup your check.

10:00 AM

HORSES MULES



1:30 PM

BEEF SALE



SHEEP



CALVES

WEDNESDAY

HEIFER SALE

11:00 AM

COW SALE 12:00 NOON

HEIFERS BULLS



DAIRY COWS

We have the usual run of 50 to 100 Heifers, all ages. Loads of fresh cows and springers from our regular shippers. Also some local fresh cows and springers.

1:30 P.M.

FEEDER PIG SALE



Pigs are accepted after 6:30 A.M. State graded from 8 to 12 Dairy Barn and Feeder Pig Barn are cleaned and disinfected weekly for your protection.

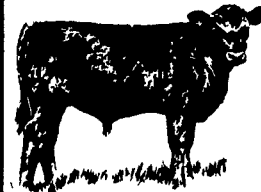
THURSDAY

Beef Auction
10:00 A.M.

BULLS STEERS BEEF COWS



STOCKERS & FEEDERS



12:30 P.M.

SHEEP GOATS CALVES



NEW HOLLAND SALES STABLES, INC.
12 Miles East of Lancaster Off Route 23, New Holland, Penna.

MANAGERS

Norman & David Kolb - 717-397-5538

Field Representatives

Luke Eberly - 215-267-6608 738-1865
Homer Eberly - 215-267-3047
Ron Ranck - 717-656-9849

Sale Barn Office Manager
Roger Floyd - 717-354-4341
FAX # 717-355-0706

Order Buyer
Paul Good - 215-445-6662