

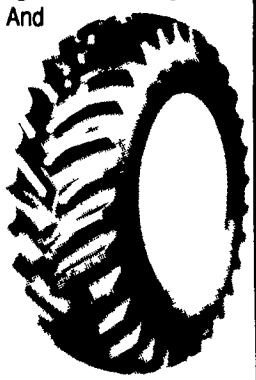
GOODYEAR

P. Lebzelter & Son

LEBZELTER FIELD & FLEET CENTER

DYNA TORQUE RADIAL

*Revolutionary 3 Lug Per Pitch Design Improves Traction And Ride
 *Computer Designed
 *Natural Shape Casing Improves Tire Body Life
 *Radial Construction Provides Better Traction, Lower Fuel And Overall Costs.



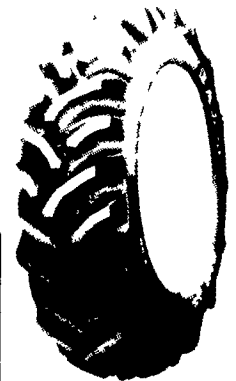
SIZE	PRICE
18.4R34	1 ★ \$450.00
18.4R38	1 ★ \$475.00
20.8R38	1 ★ \$625.00

DYNA TORQUE RADIAL NO RISK OFFER
 Buy a pair of Dyna Torque radials now. If, after 90 days from day of mounting, you are not completely satisfied with the performance of these tires, we will remove them and replace them with new Goodyear Dyna Torque bias ply tires of like size and ply rating and will credit you for the difference.

DYNA TORQUE II

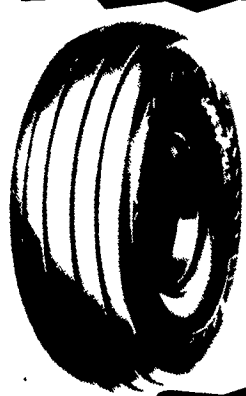
HARD WORKING HARD PULLING REAR TRACTOR TIRE

* Excellent drawbar pull with long-bar, short-bar lugs for improved traction
 * Designed for improved stability and roadability, plus reduced vibration
 * Strong angle-braced lugs have self-cleaning design
 * High-strength polyester cord body, and heavy duty rim shield protects tire from damage



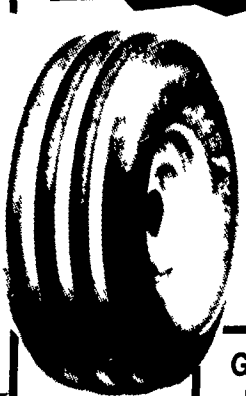
11-28 4 Ply	\$155.00	18-4-34 6 Ply	\$378.00
13-6-28 4 Ply	\$194.00	18-4-38 6 Ply	\$395.00
15-5-38 6 Ply	\$278.00	20-8-38 8 Ply	\$632.00
16-9-38 6 Ply	\$415.00		

FARM UTILITY



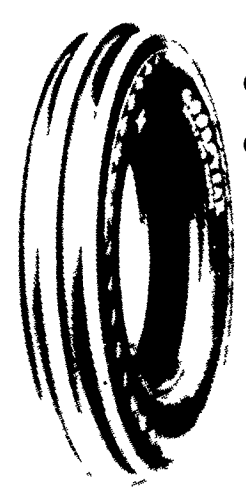
9.5L-14 8 Ply TL	\$54.00
9.5L-15 8 Ply TL	\$56.00
11L-15 8 Ply TL	\$55.00
12.5L-15 8 Ply TL	\$73.00
12.5L-15 10 Ply TL	\$80.00

DYNA RIB PREMIUM



11L-15 6 Ply TL	\$99.00
10.00-16 6 Ply TL	\$103.00
14L-16.1 10 Ply TL	\$243.00
16.5L-16.1 8 Ply TL	\$326.00

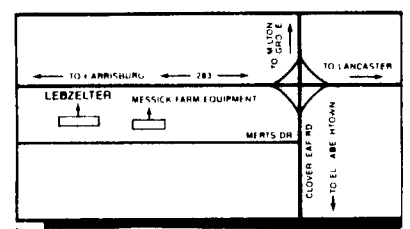
FRONT TRACTOR



3 Rib	
6.00-16 4 Ply TT	\$38.00
6.00-16 6 Ply TT	\$41.00
4 Rib	
11L-15 8 Ply TT	\$81.00
10.00-16 8 Ply TT	\$86.00
11.00-16 8 Ply TT	\$104.00

GOODYEAR SKID LOADER TIRES

23-8.50-12, 4 Ply	\$54.00
27-8.50-15, 4 Ply	\$60.00
27-8.50-15, 6 Ply	\$68.00
27-10.50-15 6 Ply	\$76.00
10-16.5 6 Ply	\$89.00
12-16.5 8 Ply	\$120.00
14-17.5 10 Ply	\$280.00
15-19.5 8 Ply	\$330.00



USED FARM TIRES

Qty.	Size	Mfg.	Ply	Tread Depth	Price Each
2	18.4-38	Firestone	8	36/32	\$200.00
1	18.4-38	Armstrong	8	31/32	\$150.00
2	20.8-38	BF Goodrich	10	15/32	\$50.00
1	18.4-34	Firestone	8	29/32	\$100.00
2	18.4-34	BF Goodrich	6	16/32	\$ 75.00

✓ Total Computerized Vehicle Alignment — All Vehicles

We Ship Free Farm Fronts and Skid Loader Tires UPS

✓ Complete Wheel Balancing

✓ 24-Hour Fleet & On The Farm Pit Stop Service

GOLD STAR
 When You Need On-The-Farm Tire Service In A Hurry, Just Call Us. We Can Cut Your Downtime Down To Size!

P. Lebzelter & Son
FIELD & FLEET CENTER
 ROUTE 283 & RHEEMS EXIT
 1-800-932-3999 OR 367-6777
 (For Pennsylvania & Maryland)
 Located Behind Messick Farm Equipment

1 FARM EQUIPMENT

DISMANTLING FOR PARTS: Case 450 Dozer with very good tracks, 188 diesel and 6-way hydraulic blade.
 BALANDA EQUIPMENT PO Box 407 Route 29 Palm, PA 18070 1-800-322-8030

100+ cow farm Ethanol alcohol plant, original manufacturer Conklin Co. S.S. process tanks w/controls, augers, hammermill, separator, pumps, distillation column, complete processing unit w/most piping and valves. Priced \$39,900 F.O.B. Mansfield, PA. 717-662-3651.

1240 Plateless corn planter w/insecticide boxes and monitor. 717/229-2093, York Co.

12' Midwest Buster Bar \$250; Walsh slimline saddle tanks \$275; Century dye marker \$250. 717-534-1253.

12' Miller offset disc. JD hydraulic reset plow, 5x16. (814)623-8871.

13' 281 White offset disc, new 24" disc, roller bearings, new paint, ready for field 301/592-7671 Frank.

1440 IH combine. NH 357 grinder/mixer. Both in good condition. (717)423-6719.

1495NH self-propelled haybine, hydro, AC, 154 hours, like new. 215-285-2414.

14' crow foot packer \$650; 36' NH elevator \$475. 717-534-1253.

1650 Oliver, 4WD, almost new tires, new paint, runs good, ready for field. 301/592-7671 Frank.

16 foot aluminum grain elevator with motor, \$300. (717)653-5396.

180 Papec forage harvester with pickup wide row corn head; Kasten Chuck wagon 14' two beater. York Co. 717-259-7070.

1855 Oliver tractor, excellent condition, \$5,900. 301/876-1956

18' White Wingfold disk, 9" spacing front and rear, \$2000 301-692-2890.

1938 JD open front A, complete, \$800. 717-872-9152 from 7am to 6pm; 717-872-7152 after 6pm.

1948 JD A; 479 NH haybine Both good condition. 717-367-2361. NO Sunday calls

1962 Int. Truck, 1600 Loadstar, best offer. Call MD 301/457-9166 7AM-10PM.

1969 N7 Ford truck w/18' flat bed; 2000 gallon steel water tank, mounted on skids. (2) Haines potato graders. 717-788-2453; 717-788-2483.

1972 JD 4 row corn planter, Model B1240, \$1,000.

1980 Hedlund-Martin manure spreader, Model S-1678, \$5,000. Both pieces are in excellent condition 717/524-9633.

1974 Dodge 200, 4x4 w/power-angle snow plow, 478 GM diesel for parts, White tractor 250 Cummins, 40' flat trailer, 6V71 Detroit rebuilt 2250, 4-53 Detroit w/trans., 5.7 GM diesel Ford 292V8 gas, 305 GM engine trans. (717)866-2091.

1975 FMC single row fresh sweet corn harvester, Wisconsin engine, extra parts. Call Jay after 7 PM 301-972-8721.

1979 International Tractor Model 184 60" mower deck, used very little. In storage since 1981 \$6000 OBO.

36' hay/grain elevator \$1300; Pittsburgh 10' transport disc \$1200. 717-367-5622.

#371 NH flail spreader, tandem axles, hyd. lid, 1000 RPM, \$900. 717-259-7211 After 7PM Adams Co.

(3) 806 International WF, (2) w/rebuilt motors; NH358 mill w/long augers and electronic scales. Amos E. Stoltzfus, 50-A West White Oak Rd, Paradise, PA 17562.

3 point 4-wheel rake good condition, near Carlisle. 717-249-5717 Eves and weekends.

3R tine harrow 1/20' disc. Used one year, like new. 12' Mid-west buster bar and 80' NH mile conveyor, like new. (717)789-4147.

3 used 3hp single phase motors in good condition, \$75 each. Wic bedding chopper 7-1/2hp \$500 OBO. (717)733-0873.

4,000G S/S-tank storage tank trailer, good f/fertilizer or other liquids, \$1,000. (908)459-5591.

4020 John Deere, 18.4x34 rubber 40%. \$7,500. 717/523-6545.

4' 3pt disc, \$125; Big Blue forage wagon \$550; 3 pt. 7 1/2" Mott flail mower \$450. 717-534-1253.

4 and 5 bottom semi mount 16" plow. 301-833-1847.

500 gallon SS John Blue spray rig on 1976 C30 4x4 pickup, double piston ground driven pump, 36' hyd. fold booms, foam marker included, \$6,400/OBO.; Krause 2410 20' heavy duty rock flex disc, 22" disc, excellent condition; MF 730, 10' offset disc, good condition; MF 520 20' disc harrow, spring folding wings, fair condition, IH 5100 18-7 soybean special grain drill, grass seed box, new double discs, depth control units rebuilt, hitch to pull cultipacker included, \$3,600/OBO.; Cultipacker available. 717-672-3245 anytime.

5050 AC tractor with AC front end loader, 1700 hours, \$8000. 717-927-6600.

510 Combine for parts, good engine. 215/589-5394.

5288 International tractor, dual wheels, 2200 hours, original owner, \$24,500. 215-593-5665

6070 Deutz Allis, 700 hours, like new, \$12,500. IH 1066 Cab, 18.4x38 tires, excellent, \$9,500. 717/656-6109

FOR SALE: Machines parting out, TD6, TD9 loader dozer, Galion 118 grader, Case 600 loader; running engines; IHC 263 gas; 282 diesel Case cont. 208 diesel engine; Parts T-9, 282, TD9. Somers Co. NJ 908-658-3414.

Manure Pump, Husky, 10', on wheels, good condition. 717/786-2839.

Martin Semi Liquid Manure Spreader, Model-V1575 (1575/gal.), used once yearly, excellent condition, \$3,400. Montg. Co. 215/287-7315.

McCormick Deering grain drill w/13 discs and steel wheels, \$350. (717)653-5396.

MF 1155, cab & air, duals, nice, \$6,500. 301-833-9091

MF 14' finishing disk \$1,500 OBO. 18-4-34" Tires on rims, half tread \$250 OBO. International trucks, antique Ford, Studabaker truck chassis. Make offer, you Haul. Early AM or late PM 215-682-2606, Berks.

MF 178, Perkins Diesel, very good condition, \$5,000. 717/432-0578.

1981 JD7720, 4WD combine w/or without 220 flex head; Kinze 19R soybean planter, no-till or conventional 12"R spacing; 52' PTO 8" grain auger; Water winch soft hose traveling gun w/4 1/2" hose 990' long, several 40' flat trailers, some w/grain sides. 609-298-3342.

1982 TR85 6RN 15' flex 1600 hours, V-8 CAT hydro 43 wide tires, \$27,000. 760 Swartz mixer wagon rebuilt bottom sides augers, \$6,500. (717)438-3155.

1983 JD 2550, 73HP, 2WD, Diesel tractor w/2700 hrs., in nice condition. JD 7000 Series 4RW corn planter w/insect. and dry fert. hoppers, field ready. 201/383-6565 after 8PM or leave message.

1984 Chev. pickup truck, 4WD, 1/2 ton, \$2,500. 1977 3/4 ton Ford pickup truck, 4WD, \$1,200. 215/932-8072.

1987 JD 3150 4WD w/ROPS canopy, 4 speed hi-low w/splitter, 1350 hours in like new condition. 201-383-6565 after 8PM.

1989 International 12,000 GVW Bobcat tandem axle trailer 6x12 body with adjustable loading ramps, like new, \$2,400. Six white no-till planter fluted coulter attachments, \$750. Farmall A with cultivator plow belt pulley, \$1,275. Bucks County. (215)297-5155.

2090 Case 4WD, CAH, 2300 hrs., 125HP tractor, like new. 717/687-7090.

(2) 150 White - 150HP, almost new tires, new paint, 2225 HR, runs real good, 2 new 12 volt batteries, ready for the field. 301/592-7671 Frank.

(2) 3x8 heavy duty JD cylinders; JD adjustable tongue for 1064 and 1065 wagons, never used; JD WF for 40, 420 and 430 row crop tractors; JD Roll-O-Matic for 10 and 20 Series Tractors. 717/898-1833 evenings.

2840 JD tractor, 1600 hours, very good condition, \$12,500, 301-692-2890.

2 Farmall SAV Cultivators and SD, 2300 hours, \$2500 JD Roller Harrow model 950, 12', \$2500; Backhoe for 1910 Ford, \$3000, 215-598-7546.

(2) JD 820, one with cab; Styled Model D w/turning brakes; Unstyled AR. 717/222-4432

(2)JD 9 hole pressed steel wheels, 11x38; (2)JD 9 hole pressed steel wheels, 8x34, very good condition; (2) combine tires and wheels, 28Lx26, 10 ply, on 10 hole IH wheels, extra good Call after dark 215/488-7695.

(2) MF combines, 860 w/1163 corn head, 18' flex head, \$38,000; 750 w/15' flex head, \$18,000. Both excellent condition. 301-253-0575.

(2) NH #8 forage wagons, fair condition, 3 beaters and roof on both, no running gears, \$1000/ea. 717-259-7211 After 7PM Adams Co.

(2) NH corn drag, good condition \$250/ea; #75 DeLaval milker pump, excellent condition \$250. Dan U. Esh, RD 2, Box 73, Loganton, PA. 17747.

(2) Noble insecticide applicators for corn planter. 717-665-4743.

2R weeder, horse scoop, 4R weeder, 5' Bush Hog, Advance potato splitter, 7' Int. offset disc, 4WD Jeep w/western snow plow. (215)262-9781.

350 Case crawler loader, torque converter, ROPS, complete new undercarriage, good running machine, \$8,000. After 5pm, (717)647-9124.