

**35 TRUCKS & TRAILERS**

26' Parker steel dump trailer, good condition, sealed tight to haul grain, \$4200 717-582-4872.

65 Chevy dump truck, 26,000 GVW, \$1,750. 2-horse trailer, \$750. (717)529-2571.

**USED TRUCKS**



1989 Chevy Heavy Duty 7/4 Ton, AT, PS, PB, AM-FM, 350 FI, 19,000 Miles, Like New \$9,900



1989 Chevy Silverado Dually Ext. Cab, AT, PS, PB, AM-FM Cass., PW, PDL, 454, Local 1 Owner, Cruise & Tilt, 17,000 Miles, Exc. Cond. \$14,800

**MARTIN'S AUTO SALES**

725 E. Main St., New Holland, PA 17557  
Office (717) 354-9967

Financing Available

YOUR SOURCE FOR THESE QUALITY PRODUCTS

**ARIENS • BOLENS • ECHO • PECO**  
OUTDOOR POWER EQUIPMENT

**HILLSBORO • OWENS CLASSIC • KODIAK**  
FLATBED/UTILITY/AUTO/LIVESTOCK/HORSE  
GOOSENECK AND STRAIGHT HITCH TRAILERS

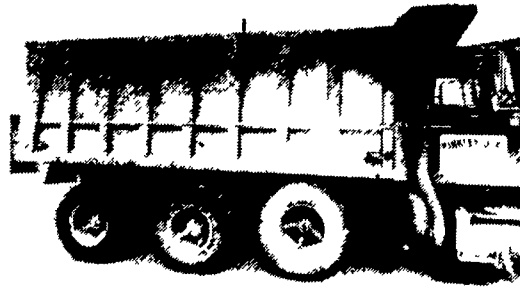
**OMAHA STANDARD • WEATHER GUARD**  
TRUCK AND VAN EQUIPMENT

**MILWAUKEE • CENTURY • SANDBORN • WINCO**  
POWER TOOLS/WELDERS/AIR COMPRESSORS/GENERATORS

• NEW AND USED WHITE/OLIVER  
TRACTOR PARTS •

**FARMERSVILLE EQUIPMENT**

R.D. 4, East Farmersville Rd., Ephrata, PA 17522  
Located in the Village of Farmersville  
(717) 354-2150



**MORGAN ALUMINUM DUMP BODY**  
15 1/2 x 5' Sides - \$3,000  
**BINKLEY & OBER INC.**  
717-569-0441  
Ask For: Jake

**YES!! ENGLE FORD DOES MAKE IT EASIER!!**

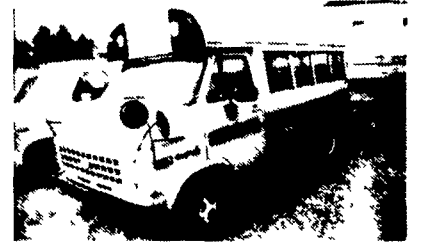
Over 100 New & Used Trucks, Vans & 4x4's

- 1989 Ford Ranger 4x4 Super Cab, AC 5 Speed
- 1989 F250 AC, 5 Speed
- 1986 F250 XLT, AC, 4 Speed
- 1988 Chevy 4x4 Super Cab, Automatic, AC
- 1989 Ford Customized Vans, Automatic, AC
- 1988 Ford F350 Dually V8, Automatic, AC
- 1986 Chevy Beauville Window Van, 5 passenger, 6 cyl., automatic, 16,000 mi.
- 1988 Ford 3/4 ton cargo van, 6 cyl., auto

**ENGLE FORD, INC.**

Rt. 147 North  
Millersburg, PA 17061  
In PA The Call's On Us 1-800-242-8075  
Out of State Call 1-717-692-4841

**1987 CHEVY SMALL SCHOOL BUS**



16 Pass., 350 V8, PS, PB, 86,000 Miles, New Inspection, Very Good Condition

**\$3,800**

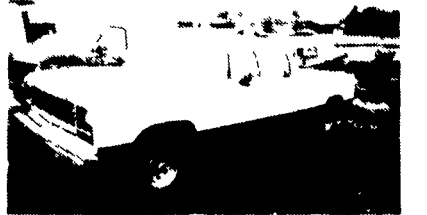
**1988 FORD E-250 WORK VAN**



300 CI, 6 Cyl, AT, PS, PB, 12,500 Miles, Set Up With \$2500 Worth Of Extra Equip, Ex. Cond.

**\$7,990**

**1983 DODGE D350 CREW CAB**



1 Ton, 318 V8, AT, PS, New Paint, 50,000 Miles

**\$4,800**

**"THE TRUCK PEOPLE" BOYER MOTOR CO.**

1065 S. State Street  
Ephrata, PA 17522  
717-738-1885 1-800-786-1835



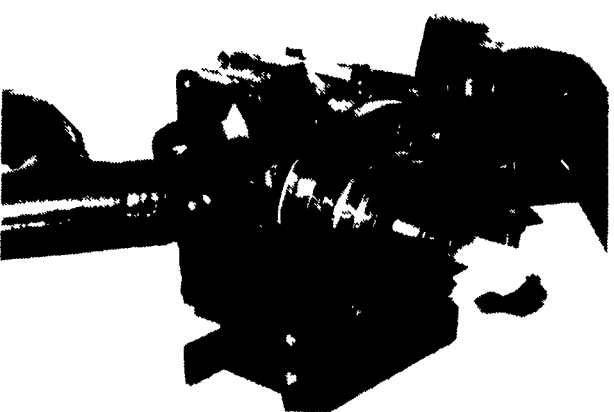
1973 Ford F350, Stake Body, Rebuilt Trans. & Rear, 360 V-8, \$2,250 O.B.O.



1979 IHC DT466, 5 Speed, 12' Reefer XMT Thermoking, \$4,995. Will Separate.



1981 Iveco Z110 Diesel, 5 Speed, 12' Van w/ Winch, Good Condition, \$4,295.



Blackmer 150 G.P.M. Transfer Pump, Like New Condition With Piping, \$599.99.



1979 Mack MC 237 RT910 H.P.S., PA Inspected, S/A Tractor, \$3,995.



2 - 1975 IHC Tandem Tractors 4200 Trans-tars 318, 10 Speed, 12.38 P/S, Low Miles On Overhauls, \$6,500 Ea.

**M—D TRUCK SALES and SERVICE, INC.**

7401 Paxton Street • Harrisburg, PA 17111 • (717) 558-9550