



**1976 IHC Paystar 5000 Tri-Axle Dump Truck**

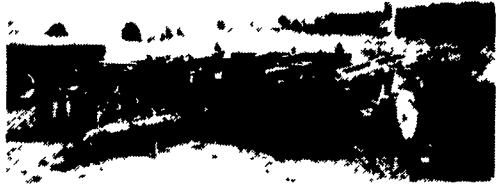
Big Cam 400 Cummins, Power Steering, Jake Brake, 15 Speed Trans., 220" Wheel Base, 153" Cab to Center of Tandems Would Also Make Excellent Manure Tank Chassis

**\$16,500.00**

**Phone (814) 793-2829 (814) 793-4481**

- 1988 Ravens dump trailer, 38' aluminum frame, air ride, roll tarp, vibrator, aluminum wheels, \$29,995
- 1984 Great Dane trailer, 48', 102", 20" drop, low profile tires, new brakes and drums, Budd wheels, R22x5 tires, spring suspension, \$8,695
- 1984 Trailmobile flat bed, 45' side kit, hold downs, Budd wheels, slider, very good condition, \$6,995
- 1988 J&J triaxle dump, 35' frame, 33' box, 60" sides, liner, air ride, roll tarp, \$27,995

Call 9-4  
**(215) 598-0804**



Krause #4921 Disc  
Excellent Condition  
**717-256-3309**

For Sale: 1975 Mack re-manufactured motor, clutch, long wheel-base tandem 58,000 lb. GVW, \$10,500. 24' aluminum trailer \$3,000. F800 \$200. Phone (717)444-3968.

For Sale: 3' high oak sides for 8' bed pickup truck. \$80. Call 717/865-5957.

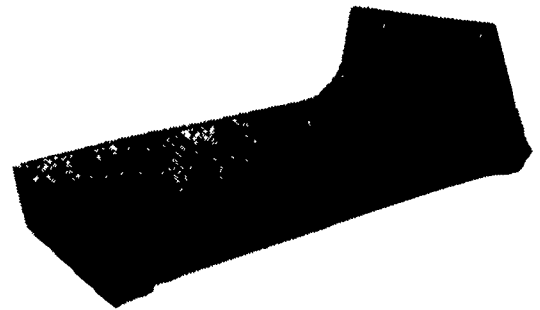
Ford 3400 1967, gas, 8 speed, P/S, 3pth, PTO, industrial loader, good tires, \$3,500. (215)584-0494.

For Sale: 1988 GMC TopKick, Cat 3208, 5/2 spd. 22' body, Air Brakes, Tag Axle, 25,000# hoist, 31,000# G.V.W., 27,500 miles. \$26,000. 203-274-8132.

'89 Ford E250 Super Cargo Van, 300 EFI, auto., PB, PS, air, 8,100 GVW, charcoal, 32,000 miles, excellent condition, \$9,950. 717-733-2873

'89 Ford F150 HD, 1/2 ton, 300 EFI., 4 spd., PS, PB, AM-FM, dual tanks, 6,250 GVW, excellent condition, \$6,950. 717-733-2873

**TRUCK BODIES**



**Replacement Truck Beds**

A complete line of heavy-duty all steel truck beds for utility or recreational purposes. sizes range from 6' to 12' lengths and fit all Chevrolet, GMC, Ford and Dodge pickup trucks. Sizes also available to fit Toyota, Nissan and other mini trucks. All truck beds have bulkheads constructed from 1 1/2" square tubing, diamond plate beds, rub rails with stake pockets and a 15" drop rear end. Cutouts are provided for tail lights along with mounting plates for marker lights on each corner. All beds are primed and painted standard black.

Made in U.S.A.

LENGTH	WIDTH	RAIL WIDTH	LIST
7 Ft.	66" or 78"	34, 38 or 40"	\$575
8 1/2 Ft.	80" or 90"	34 or 38"	595
10 Ft.	90"	34 or 38"	725
11 Ft.	90"	34 or 38"	850
12 Ft.	90"	34 or 38"	960
14 Ft.	90"	34 or 38"	1050
16 Ft.	90"	34 or 38"	1200
18 Ft.	90"	34 or 38"	1400
20 Ft.	90"	34 or 38"	1600

**Standard Features Include:**

- Head Board Stake Pockets Rub Rails
- Diamond Plate Steel Floor or 2" Wood Floor

**Installation Available**

- Trailer Hitches • Body Accessories • Goose Neck Plates
- Hoists • Dump Kits • Trailer Towing Packages

**RINGO HILL FARMS EQUIP. CO. INC.**

1624 Rt. 212, Pleasant Valley • Quakertown, PA 18951  
**(215) 346-7340 FAX: (215) 346-8041**

**COUNTRYSIDE AUTO SALES**

Rt. 72 3 Miles North of Manheim

**Late Model CARS AND TRUCKS**

Something For Everyone! M-F 9-7 Sat. 9-4

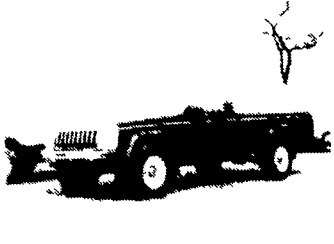
**OVER 60 CARS & TRUCKS AVAILABLE**

**Trades Accepted**

**(717) 865-3488-Home (717) 664-2170-Office**



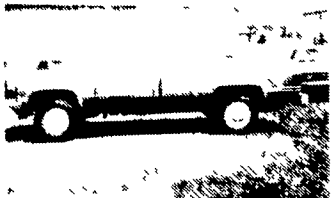
1987 Ford F-150 Super-cab, Fuel Inj., 302 Automatic, PS, PB, Full Rear Seat, New Radials, 78k Miles, Reasonably Priced  
**\$5,800**



1987 Jeep Comanche 4x4, Fuel Inj., 4 Cyl., 5 Speed, PS, PB, Bedliner, Sport Wheels, Very Nice Inside & Out, 46k Miles  
**Only \$4,995**



1987 Ford F-150 Fuel Inj., 6 Cyl., 4 Speed, PS, PB, 36,000 Miles, Good Condition, Shop & Compare  
**\$4,995**



1987 Chevrolet C20 4x4, 350 Fuel Inj., Automatic, PS, PB, Lock-out Hubs, 73,000 Miles, Good Condition, Affordable  
**\$5,800**



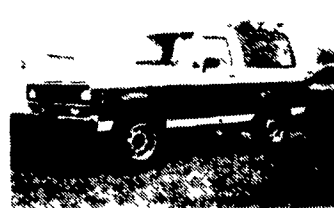
1989 Ford F-150 4x4 Fuel Inj., 6 Cyl., 4 Speed, PS, PB, 63,000 Miles, Lock-Out Hubs, Nice Truck Priced to Sell  
**\$7,350**



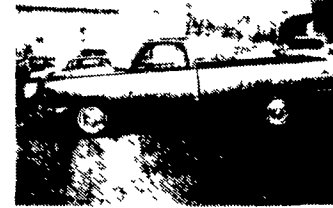
1987 Dodge Power Ram 250 4x4, 318 Auto, PS, PB, Lock-Out Hubs, 58,000 Miles, Nice Heavy Duty Truck  
**\$5,800**



1986 Jeep Cherokee 4x4, Fuel Inj., 4 Cyl., 5 Speed, PS, PB, 54,000 Miles, Pioneer Package On Sale Now  
**\$5,400**



1988 Bronco II Fuel Inj., V6, 5 Speed, PS, PB, Air Cond., 73,000 Miles, Lock-Out Hubs, XL Package, 1 Owner, X-Tra Nice  
**\$7,350**



1985 Dodge Royal SE150 V8, Auto, PS, PB, AC, 2 Tone Black & Gold  
**\$3,250**

**CARS**

- 1990 Chevrolet Lumina, \$6,850
- 1989 Oldsmobile Calais, \$6,350
- 1989 Plymouth Reliant, \$4,995
- 1989 Chevrolet Celebrity \$4,995
- 1988 Subaru Justy \$3,150
- 1988 Ford Tempo \$4,850
- 1988 Dodge Daytona \$5,400
- 1988 Pontiac Sunbird \$4,350
- 1987 Pontiac Grand AM LE \$4,995
- 1986 Buick Skyhawk \$2,995
- 1987 Cadillac Sedan Deville \$7,350
- 1986 Oldsmobile Cierra \$3,850
- 1985 Olds Delta 88 Royale Brougham \$3,850

**VANS**

- 1987 Chevrolet Hi-Top Conv Van, Dual AC, TV, \$7,350
- 1984 Ford Conversion Van, V8, Auto, AC \$4,995
- 1985 Plymouth Voyager LE, 2.6 Automatic Air Cond., Seven Passenger \$4,650
- 1984 Caravan 5 Passenger, 5 Speed, 1 Owner, \$3,450
- 1982 Dodge 250 Cargo Van V8, Auto, \$1,900

**SPECIAL INTEREST**

- 1974 Corvette Conv. \$10,500
- 1963 Corvette Conv. \$19,900
- 1980 Shay Model A, Rumble Seat, \$6,850

**Keystone Peterbilt, Inc.**

1467 Manheim Pike • P.O. Box 4396 • Lancaster, PA 17604

**1-800-729-7383**



**717-299-6630**

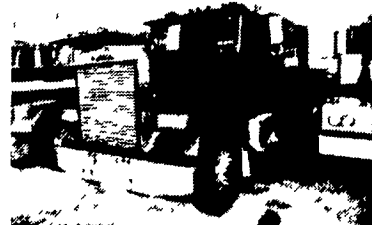
**Trucks — New and Used**



Several 1984 & 85 PETERBILT, Double Bunk Cabovers, 350/400 Cummins, Some With Jakes, 9 & 13 Speed, Air Ride Susp., Fleet Maintained, 24.5 Steel, Some Alum., Wheels, PS, AC.



1979 FORD LT900 CAB & CHASSIS, 115" CA, 290 Cummins, Jake Brake, 13 Speed, 38,000 Lb. Rear Diff., PS.



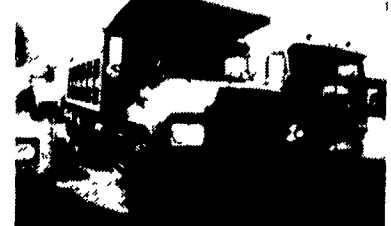
1984 FREIGHT LINER, Conv. w/60" Sleeper, 400 Cummins, 13-Speed, Air Ride, 24.5 Aluminum Wheels - Nice Truck - MUST GO!!!



SEVERAL PETERBILT Conventional Non-Sleeper & Sleeper Units In Stock. Cummins And Detroit Power... CALL FOR ADDITIONAL SPECS!



1979 MACK R686S, 300 HP, 6 Speed, 34,000 Lb. Differential, Camel Back, PS, Air Ride Cab, Complete Wet Line, 20" Spoke.



1979 MACK TANDEM DUMP 14' Steel Body, 300 HP, Jake Brake, 6-Speed, 38,000 Diff, Very Good Mechanical Condition.