

32 MISCELLANEOUS

FOR SALE: Used Barn Siding and Old Beams. 717-865-6326 or 717-933-5331

Hendey G.H. lathe, 14"x30", very good condition. \$3,000 (908)453-2088

New Burnham gas hot water boiler, 210,000 BTU, hot water coil, circulator, and aquastat. New \$2,200, will sell for \$1,100 (717)567-6059

FIREWOOD
Buy Now, Let Dry For Next Winter, Approx. 2 1/2 Cord Loads, \$150.00 Delivered Within 20 Miles, Also Wood Mulch And Sawdust
BEILER'S SAWMILL
442 Vintage Road, Paradise
Call 215-593-5989
Between 6:00 and 6:30 Evenings

35 TRUCKS & TRAILERS

1956 Ford F-500 V8 engine, 14' stake body; 1954 International 6 cylinder engine, 14' steel dump body. 717-393-6129 ask for Jack Smith

1964 Ford truck w/292 engine, 4 speed, 11,000 GVW, has steel cattle body. \$1,095. Adams County. (717)259-7211 after 7pm.

1965 Autocar, single axle wrecker, 220 cummings, 15 speed Road Ranger, Custom built wrecker body, 20,000 lb. lift winch, 30,000 lb. drag winch, Holmes tow bar, \$6,000; 1976 IH Cabover straight truck, cat diesel \$1500; 1978 White cabover tractor, wrecked Good Cummins engine, transmission and 44,000 lb Hendrickson Suspension, \$3,500. Ask for Jack or John 215-775-3528.

1968 Dodge 900 33,000 GVW 18' van body, air brakes, 2 speed, heavy frame and front axle. Make good farm or lumber truck. Luzerne County. (717)542-4021.

1968 International Loadstar 1800 with 18 foot dump bed, twin cylinder hoist excellent, 345 engine, 5+2 transmission, 30,000 GVW, 10.00x20 tires, dark green, \$1,200 OBO. Lancaster County. Call 717/285-4847.

1968 Int. Loadstar 1800 dump truck w/14' dump, steel floor w/wood sides, tires like new, runs well. \$1,500. 215/267-6726.

'89 GMC Sierra SL 3500, dual whl., short whl. base, cab & chassis, 350 FI., auto., PB, PS, AM-FM, 10,000 GVW, 14,000 miles, like new, \$9,800. 717-733-2873

'89 Kenworth T800 425 CAT 13 speed Conv. 4,400 rear double frame air ride, air ride cab, excellent shape. (717)253-3759.

8' pickup truck bed and step bumper for '86 Ford pickup. Best offer. Call 717/692-2502 days.

'90 Ford F150, 4x4, super cab, 302 EFI, 5 spd., PS, PB, air, AM-FM, dual tanks, lock-out hubs, 17,000 miles w/balance of factory warranty, excellent condition, \$13,900. 717-733-2873

'90 Ford F250, HD, 3/4 ton w/Stahl utility body, 351 EFI, 5 spd., PS, PB, AM-FM, 8,600 GVW, 3,000 miles w/balance of factory warranty, dark blue, like new. \$12,500 717-733-2873

Bulk feed truck, 1977 Ford L8000, Detroit diesel 5&2 sp, 16' aluminum Van/Cross auger and blower, motor just overhauled and blower excellent condition \$13,000 OBO 717-784-6922 Ask for Dennis

Cab-Air Scoop, \$495; '73 Cityweld Trailer, 40' slider, \$4,200; '75 Power Liner, 400 Cummins, twin screw, good condition, \$6,800 or \$10,800 OBO for both. 717/627-0666 or after 9PM 717/626-8631.

Dodge 440 truck motor, runs very good, \$500 OBO. New 366 Chevy truck motor, \$1,300 firm. (717)762-7940.

FOR SALE: 1970 International dump truck w/4 year old 14 1/2' steel grain bed, air brakes, 30,000 GVW 5+2 transmission, 345 engine \$4700 OBO. Call 215-562-3566.

FOR SALE: 3208 Cat diesel engine, complete, excellent condition, approx 80,000 original miles, low oil consumption, engine is presently running daily, \$4,200/OBO. 717-367-1252 or 653-1087

'89 Ford F350 XLT Lariat, 4x4, single rear wheel, crew cab, 460 auto., PB, PS, PW, cruise, tilt, air, towing package, 7,000 miles, like new, balance of factory warranty, \$17,500. 717-733-2873

1974 International 478 gas, 5spd. trans., 2spd. rear, 132°C.A., 35,000GVW, cab & chassis only, ideal for farm truck, \$2,800/OBO. 717-367-1252 or 653-1087

1974 Model 2010 Int. dump truck, 478 cu. in. gas, 5/2speed rear, air brakes, trailer towing package, looks and runs good, asking \$4,750 OBO. 215/286-9650.

1975 GMC 10 Wheeler, 427 gas motor, 13-spd. trans., tandem, very good condition. 215/794-7259.

1975 IHC single axle tractor, 250 Cummins, 10 speed, \$3000; 8' utility body. \$150. (215)856-7740.

1975 model 1600 International 4x4 snow plow and dump. 301-836-2676 NO Sunday Calls.

1977 3/4 Ton Ford pickup truck, auto., good condition, \$1,200. 814/749-7976.

1977 Auto car, 290 Cummins, Jake brake, double frame, 9 speed fuller, 44 rears on Hendrix suspension, 200" from back of cab to end of frame, \$7850. 301-447-2884.

1977 Kenworth, 165" wheel base, extra clean, Big Cam 3, 400 Cummins engine, Jake Brake, 14,000 mi. on new engine, Cummins warranty transferable, 13-speed over transmission, 4:11 rears, glide ride suspension, cabmate, aluminum Budd on front, steel on rear 11R-24x5, Hot Box engine heater, Racor fuel & water separator, heated Reman carrier on front drive axle. 717/569-6067 evenings.

1977 Mack D.M Dump 1988 R & S Body 15 ft. 237 Engine rebuilt 35000 mi. complete new suspension 1989 new clutch, rebuilt rear 1990 PS AC 24.5 tubless tires truck, positively road ready. (717) 284-4505.

1978 GMC C-60 454CID, 5x2, 10-20 rubber, 18' aluminum livestock body w/ decks, two saddle tanks, air brakes. Excellent condition. Any questions call between hours of 8-4:30. Ask for Phil or J.R. 203-795-6037.

1979 Ford 800, 429 gas, 32,000 GVW, 5&2, power steering, air brakes; 1981 Ford 800, 429 gas, 32,000 GVW, 5&2, air brakes and power steering, 1980 Int 1854, 466 diesel, w/22' Morgan van body, 5&2, 27,000 GVW 301-877-9889.

1979 White conventional tractor S A Cummin's power 84" C/A, wetline, 18' Freuhauf dump trailer, 32' Dorsey grain trailer, will separate (717)425-3480 evenings.

1980 Chevy 30 stake body, V8, 4 spd., \$2,800.; 1981 Ford F250, V8, 4 spd., super cab, \$2,700.; 1972 Ford L-900, \$3,000. 717-933-4114

1980 Ford 350 stakebody w/racks, dual wheeler, good condition, 94,000mi \$2000. 717-530-5235.

1980 Ford V-8 15' boxvan rollup door, running, condition good. Call (717)486-4023.

1980 Raven Dump Trailer, all aluminum frame and box, 72" sides, 2-way end gate, 31' frame, 30' box, tandem axle w/lift axle, \$15,900. Call 717/359-4626.

1980 Volvo 611, 18' insulated body w/lift gate, 25,000 GVW, fair condition. 1979 Ford Cabover CL9000 tractor, 73,000 GVW, dual axle, Detroit Diesel. 1982 Datsun pickup, dsl. 717/354-4966.

1970 Dodge 400 rack body, 6 cylinder, good condition, new tires below 25,000 original miles. Pair 900x22.5 truck tires, Military Jeep trailer also 1-1/2 ton military trailer. Call (717)992-5081 leave message.

1970 International stake body truck w/14' dump bed. Make an offer. 717-428-1963.

1972 Chevy step-van, aluminum body, 350, V-8, 4sp, 14' cargo, dual wheels, radials, \$1,975. York. (717)225-4921.

1972 F750, V-8, gas, 5+2, PS, 30,000 GVW, rebuilt springs, good rubber, 25 cu. yd. box, double tractor trailer doors on rear. Hyd bulkhead pushes load out rear. Haul sawdust, silage mulch etc. Very good condition \$4,950. Lancaster County. (717)684-3975.

1972 Int. COE, rebuilt engine and trans., \$1,800. (301)833-2311.

1973 Ford F-700, gas, 24' flat bed, 2 sp. rear, air brakes. 609-799-6391.

1973 Int. 4070 tractor, low miles on engine and 1970 28' trailco dump with roll tarp. Both in good condition, \$1,200 OBO. York County. (717)993-2206.

1973 White Freightliner, C.O., Cummins motor, 9 speed, tandem rears, air shift PTO, good working condition, \$2,500 OBO. (717)532-9472.

1988 GMC 3500 extended cab dually. Just like new only 9,000 miles. 454, 4 speed, air, bedliner, gooseneck and frame hitch, brake controller, running boards and more. Anxious to go to work! \$14,400. (717)597-5611.

20' Parkhurst Grain Body w/24 ton hoist, excellent condition. 215/253-4467.

22' Eby aluminum gooseneck cattle trailer, excellent condition. Call for details 609/299-4952.

22 foot Eby aluminum livestock truck body, \$3,500. Somerset County, PA. Call (814)662-2174.

24' tandem Swartz roll back, 15 ton, hyd. stand, on '73 Kenworth 4 1/2 H.P. cab, RTO, 9513 transmission, 4 aluminum buds. BEST OFFER. 717-225-3798, 717-873-3928.

1986 Dodge pickup truck, PS, PB, AC, cap on back, excellent condition. (215)779-3284.

1986 Ford Ranger 4x4, extended cab, STX, charcoal & silver, loaded, excellent condition. Call 215-926-2441

1986 Ford F-350, 460 4sp, PS, PB, with sleeper and 5th wheel, good condition \$6200 NEG. Lancaster Co. 215-267-2507.

1986 Ford F350, 460 4spd, PS, PB, red with new 10' flat bed, good condition. Days 215-267-2507; Eves 215-267-8190. Lancaster Co.

1987 Ford Tandem Dump 15 1/2' new steel bed. Like new cond. \$36,000. 717-436-6137.

1987 Ravens dump trailer, 36 frame, 34 box, 2-way gate, air ride, 11,24.5 rubber, Budd wheels, tarp and bows. (717)354-5796.

1987 stock trailer. 16x6 gooseneck red. Lined, spare tire, \$3,000 inspected. (301)875-0912 excellent condition.

1987 Utility Flatbed 48x102 121" spread, air suspension, aluminum buds low-pro tires, 5' side kit tie-downs under mounted side rack. 717-236-3832

SHIRK STOCK TRAILERS

BUMPER HITCH & GOOSENECK HITCH

UNITS IN STOCK:

- 6'x12' SHIRK, BUMPER
- 6'x16' SHIRK, BUMPER
- 6'x16' SHIRK GOOSENECK
- 6'x20' MORITZ GOOSENECK
- 7'x20' MORITZ ALUMINUM GOOSENECK

OTHER SIZES AVAIL.

MARTIN HARDWARE & EQUIP. CO. INC.

Rt. 501, 1 1/2 Miles South of Schaefferstown, PA
PHONE: (717) 949-6817 or 949-2549
Mon. & Wed. 8 to 5;
Tues., Thurs., Fri. 8 to 8;
Sat. 8 to 4

FOR SALE

Quality Used Woodworking Machinery

RIPSAW - Diehl SL52 Straight Line Ripsaw SN#67M17541168 \$10,000.00

DOVE TAILER - DODDS SE-15 Automatic Dove Tailing Machine, SN#C1474 \$9500.00

DRAWER CLAMP - Dodds MD#C40 \$7500.00

GLUER - Dodds Automatic Dovetail Gluer, GC-26, SN#G-8428-502 \$3500.00

LAY UP TABLE - Diehl Panel Lay Up Table For SL52 \$1250.00

ROUTER - C R Onsrud 2003 Inverted Router (New 1987) \$2500.00

PANEL SAW - Safety Speed, 3 HP, 63" High Cutting Capacity (Vertical) MD# SSC H-5 \$900.00

PANEL SAW - Rodgers 10' High Cutting Capacity, cuts vertically, 10 HP, (Vertical) MD#707V \$7000.00

WOOD HOG - 10' Montgomery BLO-Hog MaxER Wood Hog, SN#2112, 30 HP 220/440, 20' Vibrating Infeed Conveyor \$9000.00

CONVERTERS - All Sizes (From 5 HP-40 HP) Of Rotary Phase Converters (Converts Single Phase To 3 Phase Power) P.O.R.

PAINT SPRAYER - 2 Binks Air Assist Airless Paint System. (Each) \$475.00

BAND RESAW - Power Feeder for Band Saw \$1200.00

BANDSAW - 38" Rollstone Band Saw, 10 HP \$1200.00

CLAMP CARRIER - 40 Section Taylor Clamp Carrier, (Capacity 32"W-8'6" L), T-Bar Machine SN#748 \$15,000.00

ROUTER - Ekstrom Carlson 156 Pin Router (Table Raise), 3 HP, 3 phase \$1276.00

ROUTER - Ekstrom Carlson 434 Pin Router (Sliding Head), 5 HP, 3 phase \$2500.00

DUST COLLECTOR - Tort 5 HP High Efficiency Dust Collector w/4 bag after filter and cyclone, 2000 C F M \$2050.00

WORK BENCHES - Heavy Duty w/Wooden Tops w/Penco Metal Legs, 115V Strip, 32" D 96" L 35" H \$100.00

AIR COMPRESSOR - Englo 5 HP, 2 Stage, 60 Gal. Vertical Tank Mounted, MD#Y58-60V, New 1987 \$1050.00

AIR DRYER - Dayton Refrigerated Air Dryer For Air Compressor \$750.00

SANDER - 16" Vertical Belt Sander \$950.00

BUSS 44 30" Single Surface Planer w/Sharpener, SN#4714 \$3,500.00

TIMESAVER 30" Single Head, Wide Belt Sander, 50HP 220/440 MD #TOP-V30 SN#3690 \$5500.00

Other Machinery And Equipment And Prices Available On Request



Zimmerman Wood Craft Co.
227 Wood Corner Rd., Lititz, PA 17543
Call Clair at (717) 733-6698

Authorized Dealer Of Aqua II Multi-Fuel Indoor/Outdoor Water Stoves
(Outside Furnaces) For Home or Business

SAVE MONEY ON WOODWORKING MACHINES!

Band saws, jointers, planers, routers, scroll saws, drill presses, table saws, sanders, lathes, shapers, dust collectors & more in stock 30 Day Free Trial! 1 Year Warranty Call For Low Prices 1-800-445-4669 Terre Hill, Pa

Stainless Steel 13'4"x30"W counter w/1 22"x26" sink w/22"x11" shelf Best Offer 717-957-4907 7-9PM

Three freezer condensers w/electric defrost 10 glass freezer doors 24"x70" Call (215)286-5239 before 7am or after 9pm

TIRONIE'S TARPS. SHIPPED ANYWHERE. 1-800-874-2928.

Woodmizer bandsaw sawmill LT40 excellent condition, used only 250 hrs. (717)533-3181.

33 RECREATIONAL VEHICLES

34 AUTOS

1956 Chevy truck 3/4 ton, flatbed, 6-cyl bad engine, 1966 Ford Galaxie, 390 engine, 4DR, RH side scraped, runs, 104,000mi, 1968 Ford, 2 door, 6-cyl, custome RH front, wrecked, have parts, runs, 70,000mi BO 717-957-4907 7-9PM

For Sale 1979 Plymouth Trailduster, V-8, auto, 4x4, nice, \$1,500 (717)627-1251.

34 AUTOS

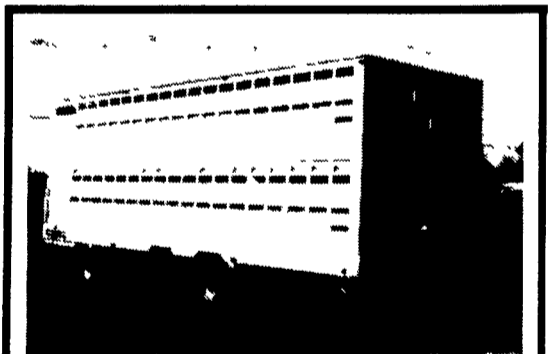
1986 36' Coachman Motor Home 454-GMC, PS, PB, CC, 2A/C, 6.5-Gen Microwave, Tub/Shower, Awning 27K-Miles Excellent condition Snyder/Co 717-743 6732

1988 Articcat Pantera, \$3,600 1989 Articcat Pantera, \$3,995 Both in excellent condition (301)739-6162

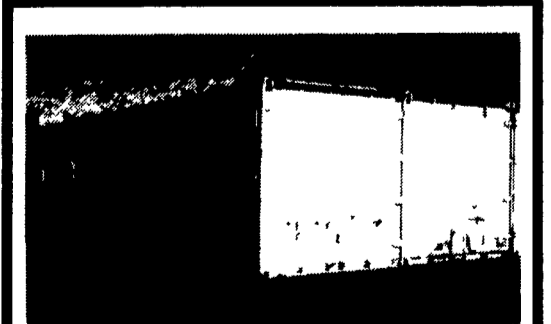
Burkholder Auto Danville (717) 437-2212

- 89 Honda Civic, 4 Door, 5 Speed, 19,000 Miles.....\$6,995
- 89 Honda CVC LX 4 Dr, 12,000 Mi.....\$8,395
- 89 Pontiac Firebird, Blue, T-Top, V6, 12,000 Mi.....\$7,895
- 88 Toyota Corola SW, Brown.....\$4,600
- 88 Mercury Tracer SW, Gold, 29,000 Mi.....\$4,200

PAINTED STEEL ROOFING & SIDING
• Galvanized/Galvalume
• 29/26 Gauge
• 3 Major Brands Available
• Large Stock Trim & Sheet
AS LOW AS \$32.00 per/sq.
Conestoga Building Supply
New Holland, PA 17557
717-354-2613 or
1-800-544-9464



Eby Aluminum Livestock Body
28' Long 8 1/2' High, Lift Deck, Gates, Side Door, Good Condition
\$5,500
717-354-0364



(2) 40' Containers, Both Excellent Cond.
One Reefer With New Comp. (Elec) Under Power \$3,000
Container Without Refrigeration \$1,500
Call Alan Anytime (301) 486-6691