

New Wilmington Livestock Auction

New Wilmington, Pa.
Monday, March 18, 1991
Report Supplied by PDA

CATTLE 221...PDA...Compared with last weeks market: Slaughter cows .50 to 1.00 higher. Couple Standard slaughter steers 68.00; few Select Holsteins 62.00-67.00, Standard 55.00-62.00. Few Standard sl. heifers 64.00-66.00. Breaking Utility & Commercial sl cows 51.00-55, few 56.00-57.50, Cutter & Boning Utility 48.50-53.00, Canner & Low Cutter 42.00-48.75, Shells down to 11.00. Yield Grade No. 1, 1240/2050 lbs. sl. bulls 62.00-67.00. Feeder Cattle: Few Medium & Large Frame No. 1, 400/585 lbs. steers 85.00-97.00, few 700/965 lbs. 67.00-74.50. Few Medium & Large Frame No. 1, 380/515 lbs. heifers 70.00-86.00, few Large No. 2, 750/845 lbs. Holsteins 55.00-58.50.

CALVES 294...Couple High Choice & Prime vealers 135.00&137.00, Standard & Good 90/120 lbs. 55.00-70.00, 60/85 lbs. 45.00-58.00, lot Utility 53 lbs. 37.00 Farm Calves: Hol. Bulls No. 1, 85/135 lbs. 120.00-174.00, few 75/80 lbs. 75.00-85.00, #2, 85/130 lbs. 70.00-131.00; No. 1, Hol. Heifers 80/125 lbs. 100.00-128.00, few 65/75 lbs. 70.00-85.00. Beef cross 80/135 lbs. bulls & heifers 100.00-232.50.

HOGS 359...Barrows and gilts: 2.00 to 2.50 higher. US No. 1-2 215/255 lbs. 51.50-52.25, lot 53.60, 1-3 220/260 lbs. 50.00-51.50, 2-3 235/275 lbs. 47.00-50.00, 1-3 165/190 lbs. 46.75-48.00. Sows: 3.00 higher. US No. 1-3 330/630 lbs. sows 46.00-53.50, few 2-3 310/495 lbs. 42.00-46.00. Boars 36.00-40.50.

FEEDER PIGS 25...Few US No. 1-3 25 lbs feeder pigs 32.00-34.00 --- all per head.

SHEEP 367... BULK OF SUPPLY SPRING SLAUGHTER LAMBS SOLD TO EASTER TRADE ...Lot High Choice & Prime 33 lbs. spring slaughter lambs 120.00, 40/60 lbs. 75.00-84.00, lot 94.00, 60/80 lbs. 73.00-83.00, few Choice 30 lbs. 92.50-107.50, 40/60 lbs. 51.00-70.00, 60/80 lbs. 55.00-64.00, Good & Choice 20/40 lbs. 40.00-62, 40/60 lbs. 50.00-60.00; Choice 80/100 lbs. wool

lambs 48.00-52.00 - all cwt. Slaughter sheep 9.00-23.00.

GOATS 39...Few Large 40.00-51.00, Medium 22.00-40.00, Small 10.00-25.00 --- all per head.

Mercer Livestock Auction

Mercer, Pa.
Tuesday, March 19, 1991
Report Supplied by PDA

CATTLE 195...PDA...Compared with last weeks market: Slaughter steers 1.00 to 1.50 higher; Cows 1.50 to 2.00 higher. Choice slaughter steers 77.00-81, one high yielding 83.50, Select 71.00-76.50, high yielding up to 78.00, one Choice Holstein 75.00, couple Select 67.50, Standard 63.50-70, few Utility 58.00-62.00. Choice sl. heifers 75.00-77.00, Select 67.50-72.00, few Standard 60.00-64.50, few Utility 55.00-59.00. Breaking Utility & Commercial sl. cows 51.00-55.85, Cutter & Boning Utility 47.25-52, Canner & low Cutter 40.00-47.50, Shells down to 24.00. Yield Grade No. 1, 1000/1860 lbs. sl. bulls 58.00-65, one high yielding up to 72.75, one No. 2, 1205 lbs. 50.00. Feeder Cattle: Medium No. 1, 350/600 lbs. steers 80.00-104.00, few 800/950 lbs. 68.00-70.00. Few Medium & Large Frame No. 1, 300/500 lbs. heifers 73.00-84.00, few 600/750 lbs. 65.00-67.00. Medium Frame #1, 500/700 lbs. bulls 70.00-80.00, couple 450 lbs. 90.00

CALVES 104...Couple Choice vealers 98.00&103.00, few Good 84.00-97.00, few Standard and Good 80/115 lbs. 45.00-68.00, few Utility 45/60 lbs. 30.00-40.00. Farm Calves: No. 1, Holstein Bulls 90/125 lbs. 120.00-181.00; few Hol. Heifers 90/120 lbs. 110.00-145.00. Beef cross 80/115 lbs. bulls and heifers 180.00-225.00.

HOGS 93...Barrows and Gilts US No. 1-2 214/250 lbs. barrows and gilts 50.35-51.60, lot 12 head 52.35, 1-3 220/266 lbs. 49.00-50.00. US No. 1-3 390/520 lbs. sows 50.00-53.00, 2-3 400/600 lbs. 47.00-49.00 Few Boars 32.50-35, one 46.00.

FEEDER PIGS 0...No market test - per head.

SHEEP 16...High Choice 78/95 lbs. wool slaughter lambs 45.00-50.00 - all cwt.

Keister's Middleburg Auction

Middleburg, Pa.
Tuesday, March 19, 1991
Report Supplied by Auction

CATTLE 385...REPORT IS SUPPLIED BY THE AUCTION...Compared with last weeks market: High Choice & Prime slaughter steers 78.50-82.75, Choice 77.00-82.25, Select 75.00-77.00, Standard 65.00-74.75; Choice Holsteins 71.00-74.75, Select 67.00-70.75, Standard 64.00-66.75. Choice sl. heifers 76.00-79.85, Select 72.00-75.75, few Standard 65.00-71.75, Utility 60.00-64.75. Breaking Utility & Commercial sl. cows 51.00-55.50, Cutter & Boning Utility 50.00-55.75, Canner & low Cutter 47.00-50.00, Shells down to 45.00. Choice sl. bullocks 70.00-72.75, Select 65.00-69.75. Yield Grade No. 1, 1200/1895 lbs. sl. bulls 63.25-72.50, No. 2, 1000 lbs. & up 60.00-63.00. Feeder Cattle: 350/875 lbs. steers 75.00-98.00. 350/750 lbs. heifers 60.00-92.50. 350/1010 lbs. bulls 62.00-96.00.

CALVES 204...Prime vealers 120.00-131.00, Choice 95.00-115.00, Standard & Good 90/110 lbs. 70.00-82.50, Standard 60/90 lbs. 60.00-72.00. Farm Calves: Holstein bulls No. 1, 85/125 lbs. 125.00-176.00; Hol. Heifers 80/120 lbs. 100.00-154.00.

HOGS 303...BARROWS & GILTS: US No. 1, 225/250 lbs. barrows and gilts 53.75-54.50, 1-2 220/250 lbs. 52.50-53.50, 2-3 210/260 lbs. 51.50-52.50, 2-4 190/270 lbs. 47.00-51.50. US No. 1-3 280/675 lbs. sows 44.00-48.75, few to 50.00, 2-3 250/575 lbs. 35.00-44.00. Boars 33.00-39.00.

FEEDER PIG 328 US No. 1-3 20/40 lbs. feeder pigs 42.00-53.00, 40/60 lbs. 54.00-58.00 --- all per head.

SHEEP 141... BULK OF SUPPLY SPRING SLAUGHTER LAMBS SOLD TO EASTER TRADE ...Choice 20/30 lbs. spring slaughter lambs 90.00-175.00, 40/50 lbs. 80.00-135.00, 60/70 lbs. 60.00-80.00, 80/90 lbs. 70.00-78.00; Choice 90/110 lbs. wool lambs 53.00-68.00, 60/80 lbs. 45.00-52.00. Slaughter ewes 15.00-27.00 - all cwt.

GOATS 47...Large 40.00-67.50, Small 20.00-50.00 --- all per head.

Lancaster Farming, Saturday, March 23, 1991-A7

Morrisons Cove Livestock

Martinsburg, Pa.
March 18, 1991

Report supplied by auction

CATTLE: 160. HIGH CHOICE AND PRIME 79.00-82.60, CHOICE 77.50-79.00, GOOD 74.50-77.00, STANDARD 71.00-74.25.

HEIFERS: CHOICE 74.50-77.00, GOOD 72.00-74.25.

COWS: UTILITY AND COMMERCIAL 53.00-58.75, CUTTERS 52.25-57.00, CANNER AND LOW CUTTER 40.75-51.50.

BULLOCKS: GOOD AND CHOICE 64.50-70.00.

BULLS: YG#1 58.50-65.85.

FEEDER CATTLE: STEERS 80.00-95.00, BULLS 77.00-87.00, HEIFERS 73.00-84.00.

CALVES: 241. PRIME 101.00; CHOICE 97.00; GOOD 85.00-95.00; STANDARD AND GOOD 79.00-84.00; 90-110 LBS. 65.00-70.00, 65-90 LBS. 55.00-64.00, HOLSTEIN BULLS 90-130 LBS. 125.00-162.00, HOLSTEIN HEIFERS 90-130 LBS. 125.00-151.00.

HOGS: 117. US#1-2 52.50-54.25, US#1-3 50.50-51.75.

SOWS: US#1-3 43.00-48.25.

BOARS: 37.50-42.25.

FEEDER PIGS: 3. US#1-3 20-35 LBS.

NO MKT. TEST; 1-3 35-50 LBS. NO MKT. TEST.

SHEEP: 209. CHOICE 55.00-61.00; GOOD 53.00-58.00; SLAUGHTER EWES 15.00-22.00; SPRING LAMBS 70.00-130.00.

GOATS: 15.00-57.00.

47 LOADS TOTAL. ALFALFA 89.00-137.50; TIMOTHY: 32.00-64.00; STRAW 47.00-60.00; EAR CORN 65.00-66.00.

Lebanon Valley Livestock Auction

Fredericksburg, Pa.
Tuesday, March 19, 1991
Report Supplied by PDA

CATTLE 130. PDA
Compared with last weeks market: Slaughter sows steady to few Select 66.00-67.25. Few Choice sl. heifers 68.00-71.75, few

Select 66.25-70.75, few Standard 54.75-61.75. Breaking Utility & Commercial sl cows 52.75-55.50, few 58.25, low dressing down to 48.75, Cutter & Boning Utility 48.75-53.75, few 55.25, Canner & Low Cutter 45.00-49.50, Shells down to 41.25 Few Choice sl. bullocks 69.25-71.50, two Select 66.00&69.50, two Standard 55.25&62.75 Few Yield Grade No. 1, 1460/2030 lbs. sl. bulls 63.75-68.00

CALVES 219..Few Good and Choice vealers 103.00-108.00, few Standard and Good 65/90 lbs. 50.00-55, one 61.00, one Utility 60 lbs. 45.00 Farm Calves: Hol Bulls No. 1, 75/120 lbs. 122.00-144.00, No. 2, 70/115 lbs. 60.00-137, mostly 100.00-130.00; one No. 1, Hol. Heifers 90/125 lbs. 132.00-165.00, few No. 2, 80/90 lbs. 75.00-92.00 Few Beef cross 75/95 lbs. bulls and heifers 115.00-155.00

HOGS 167 Supply included 62 head sows - Barrows and gilts: mostly .50 higher Lot US No. 1-2 248 lbs. 50.75, 1-3 215/235 lbs. 49.25-50, lot 51.00, few 2-3 215/235 lbs. 48.75, few 2-4 280/290 lbs. 46.00-49.00, few 1-3 145/200 lbs. 44.25-48.00. Sows mostly steady. US No. 1-3 300/495 lbs. sows 42.75-47.50, 500/660 lbs. 47.25-48.75, few Medium 300/395 lbs. 27.50-38.50. Boars 40.00-41.25.

FEEDER PIGS 5...No market test - per head

SHEEP 22. BULK OF SUPPLY SPRING SLAUGHTER LAMBS SOLD TO EASTER TRADE ...Choice & Prime 15/40 lbs. spring slaughter lambs 93.00-112.00, lot (4 head) 46 lbs. 94.00; one Choice 100 lbs. wool lamb 60.00, one 145 lbs. 35.00. Few Slaughter sheep 15.00-19.00 - - - all cwt.

GOATS 1...Large Nanny 45.00 - all per head.

Dewart Livestock

Dewart, Pa.
March 18, 1991

Report Supplied by PDA

STEERS: 60.00-74.00.
HEIFERS: TOO FEW TO QUOTE.
GOOD COWS: 50.00-57.25.
CANNERS AND CUTTERS: 43.00-50.00.

BULLS: 59.00-61.00.
VEAL: 90-190 LBS. 80.00-192.50; 70-90 LBS. 55.00-80.00.

A. & C. DIFFENBACH
AUCTION INC.

1991

100 W. JACKSON ST., BOX 186
NEW HOLLAND, PA 17557

HAY SALE EVERY MONDAY AND WEDNESDAY - 10:00 A.M.

SAT., MAR. 23	9:00 A.M.	MOSES B. GLICK, 2190 PEQUEA LANE, LANCASTER, PA AIR SUPPLIES, ELECT. MOTORS, HYDRAULIC SUPPLIES, WOODWORKING ITEMS, LUMBER (ON THE PREMISES)
WED. APR. 3	6:00 P.M.	WHOLESALE WOOD FURN. & CRAFT ITEMS AUCTION
FRI., APR. 12	9:00 A.M.	FARM EQUIPMENT AUCTION
WED., APR. 17	6:30 P.M.	GUNS & WINROSS TRUCK AUCTION
SAT., MAY 4	9:00 A.M.	20 YEAR TRAIN COLLECTION AUCTION-G. MARTIN
FRI., MAY 10	9:00 A.M.	FARM EQUIPMENT AUCTION
TUES., MAY 21	9:00 A.M.	QUILT, CRAFT & BUGGY AUCTION-BUGGIES 1 P.M.

PHONE (717) 355-7253-OFFICE (717) 354-3297 HOME
FAX #355-9547

ALAN DIFFENBACH AUCT. - AU2258-L

- * Linebred for maximum consistency and vigor in offspring
- * Carcass data available from customers at several plants.
- * Central test station figures from stations in 5 states.
- * Real-time scan data for loin and back fat.
- * Free delivery and all sales are guaranteed.
- * Complete program with *maternal-line* gilts available.
- * Hampshire and Landrace boars available.

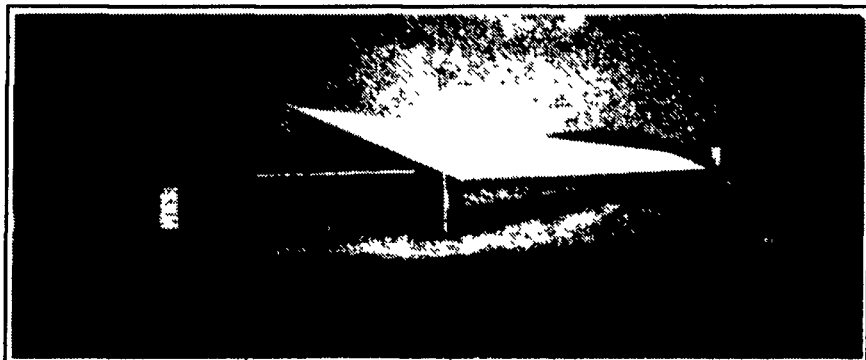


OUTLAW SEEDSTOCK SERVICES

Route 2, Box 324A • Seven Springs, NC 28578
919-569-7521 • 1-800-752-7113

LOOKING FOR EXTRA
CASH FLOW FOR YOUR
FAMILY FARM?

EXCELLENT CONTRACTS AVAILABLE FOR HOGS & POULTRY



★ A STEADY MONTHLY
INCOME

★ A GUARANTEED
LONG TERM CONTRACT

Check Our Prices
On Quality
Buildings And
Equipment!

Full Line Of Parts In Stock
For Your Poultry &
Hog Needs

WE SHIP UPS

SWINE & POULTRY SYSTEMS SPECIALISTS
FARMER BOY AG.

24 HOUR SERVICE... (717) 355-7253

Farm Crest Feeds
Contracts Being Offered For...
New Farrow To Finish Units
Preferrably 300-500 Sows. Also Interested
In New And Existing Finishing Floor
To Be Run "All-In-All Out"

We Supply

- Cash Flow Information
- Professional Service Personnel
- Quality Genetics
- Producer Incentive Programs

Become a part of our Planned Growth!
Call now to discuss this opportunity!

717-626-0331

OR

1-800-432-3040