

Eighty-Four Livestock

Eighty-Four, Pa.
March 11, 1991

Report Supplied by PDA

CATTLE 414. COMPARED WITH LAST WEEK'S MARKET: SLAUGHTER COWS STEADY. ONE CHOICE SLAUGHTER STEER 77.50, FEW SELECT 71 00-74.00, STANDARD 65 00-69.00. CHOICE SL. HEIFERS 73.00-77 00, SELECT 67 00-72.00, FEW STANDARD 60.50-66 00. BREAKING UTILITY & COMMERCIAL SL. COWS 49 00-55.00, CUTTER & BON. UTILITY 46 00-51 00, CANNER & LOW CUTTER 40.00-46 50, SHELLS DOWN TO 22 00 CHOICE SL BULLOCK, ONE 70 00, ONE STANDARD 66.00. YIELD GRADE NO. 1, 1200/1750 LBS. 56 50-64.50, FEW NO. 2, 1400/1600 LBS 54.00-56.00. FEEDER CATTLE MEDIUM & LARGE FRAME NO. 1, 240/300 LBS. STEERS 110 00-126.00, 325/530 LBS 89.00-108, FEW 116.00, 500/700 LBS. 83.00-91, FEW SMALL #1, 340/400 LBS 84.00-97.00 MEDIUM & LARGE FRAME #1, 275/500 LBS. 83 00-100 00, LOT HOLSTEINS 400 LBS 85 00. MEDIUM FRAME NO. 1, 500/700 LBS. BULLS 77 50-90 00, FEW 280 LBS UP TO 115 00

CALVES 279. COUPLE CHOICE 110.00&120.00, FEW GOOD 93 00-101 00, STANDARD & GOOD 90/120 LBS. 51 00-65 00, 60/85 LBS. 43 00-54 00, FEW UTILITY 45/55 LBS 30 00-36 00 FARM CALVES NO 1, HOLSTEIN BULLS 90/130 LBS 100 00-150 00, COUPLE 170 00, NO 2, 75/100 LBS 75 00-106 00 NO. 1, HOL HEIFERS 90/130 LBS 80 00-140 00 BEEF CROSS 80/110 LBS BULLS AND HEIFERS 110 00-250 00

HOGS 83. BARROWS AND GILTS STRONG TO 50 HIGHER ONE SMALL LOT US NO 1-2 235 LBS 51.00, 1-3 214/250 LBS. 47.50-48 00, FEW 2-4 290/300 LBS 44.00-44.50. FEW US NO 1-3 300/500 LBS SOWS 43 00-45 00. BOARS 37 00-44 00.

FEEDER PIGS 34 US NO 1-3 20-35 LBS FEEDER PIGS 20 00-34.00, 35/60 LBS 33 00-40 00 -- ALL PER HEAD

SHEEP 208. HIGH CHOICE & PRIME 35/45 LBS. NEW CROP LAMBS 95 00-120 00, 50/60 LBS. 70 00-85.00, 85/96 LBS. 65.00-68.00; HIGH CHOICE 72-105 LBS WOOL LAMBS 58 00-60, CHOICE 25/30 LBS NEW CROP LAMBS 95.00-105.00, 40/55 LBS. 65.00-88 00, CHOICE 86 LBS. WOOL LAMBS 50 50, GOOD & CHOICE 70/80

LBS. FEEDER LAMBS 48.00-62.50. FEW SLAUGHTER SHEEP 15.00-20.00. GOATS 11. COUPLE LARGE 55.00 AND 59.00, SMALL KIDS 16.00-25.00 -- ALL PER HEAD.

Belknap Livestock Auction

Dayton, Pa.

Wednesday, March 20, 1991

Report Supplied by PDA

CATTLE 112. PDA ..Compared with last weeks market: Few Choice Holstein slaughter steers 67.00-67.75. One Choice sl heifer 72.25, few Standard 56.50-63.75. Breaking Utility and Commercial slaughter cows 49 50-53 50, Cutter and Boning Utility 47 00-51.75, Canner and low Cutter 38 25-47.25, Shells down to 27 50. Few Yield Grade No. 1, 1345/2380 lbs. sl. bulls 62 50-70 50, few No 2, 805/1540 lbs 50 00-58 25 FEEDER CATTLE. Large Frame No 2, 365/795 lbs. Holstein steers 62 50-75 00 Few Medium Frame No 1, 405/515 lbs heifers 72 50-82 50 Few Medium Frame No 1, 340/450 lbs bulls 78 50-93 00, Medium and Large Frame No 1, 460/670 lbs 70 00-77 50

CALVES 131 Few Standard and Good 90/110 lbs vealers 65 00-68 00, 55/85 lbs 55 00-66 00 Farm Calves No 1, Holstein Bulls 80/135 lbs 103 00-152 00, couple 161 00 & 170 00, few 70/80 lbs 70 00-102 50, No 2, 85/125 lbs. 71 00-105 00, No 1, Hol Heifers 80/120 lbs 85 00-141 00, few No 2, 70/90 lbs 70 00-81 00 Beef cross 80/140 lbs bulls & heifers 76 00-147 50, one 222 00

HOGS 141 Barrows and gilts 50 to 100 higher US No 1-2 235/250 lbs 51 50-53 25, 1-3 225/260 lbs 50 00-52 00, 2-3 225/275 lbs 49 60-50 50, lot 53 60, lot 2-4 290 lbs 49 10, lot 1-3 200 lbs 46 25 Sows. One US No 1-3 610 lbs sow 43.50 Boars One 36 00

FEEDER PIGS 69. Few US No. 1-3 20/35 lbs feeder pigs 28 50-47 00, 35/50 lbs. 45 50-49 50 - all per head.

SHEEP 280 Bulk of supply spring sl lambs sold to Easter Trade Choice and Prime 20/40 lbs spring slaughter lamb 90 00-105 50, few 127 00, 40/60 lbs. 73 00-88 00, 60/80 lbs 60 00-74 00, lot 95 lbs 66 50 Choice 15/25 lbs 80 00-100 00, 25/40 lbs 70 00-82 50, 40/60 lbs 63 50-77.00. Good and Low Choice 25/40 lbs 56 00-69 00 Slaughter sheep 10 00-23 50. - all Cwt.

GOATS 43 Few Large 50.00-74.00, Medium 21 00-45.00, Medium and Large Kids 35 00-54.00, Small 14.00-36 00 - all per head.

New Holland Horses

New Holland Sales Stables
New Holland, PA

Monday, March 18, 1991

REPORT SUPPLIED BY AUCTION REGISTERED RECEIPTS OF 297 HEAD OF HORSES, MULES AND PONIES. MARKET STEADY.

DRIVING HORSES: 540.00-935.00. RIDING HORSES: 485.00-785.00. BETTER HORSES: 910.00-1150.00. REGISTERED HORSES: 1285.00-1400.00. LIGHTWEIGHT KILLERS: 450.00-525.00. HEAVYWEIGHT KILLERS: 585.00-900.00. THIN HORSES: 255.00-400.00. MARE PONIES: 45.00-250.00. COLTS: 40.00-100.00. GELDINGS: 45.00-250.00. LARGER PONIES: 300.00-500.00.

Shenandoah Valley Livestock

Harrisonburg, Va.

March 16, 1991

Report supplied by auction

STEERS: M&L-1300-500LBS. 100.00, 112.00, 118.00, 500-700 LBS. 87.00-103.00, 700-1000LBS. 73.00-85.00; HOLSTEIN 300-1000 LBS. 70.00-83.75. S-L&M&L-2: 700-1000 LBS. 70.00-75.00. FEEDER BULLS: 300-500 LBS. 90.00, 112.00, 120.00; 500-700 LBS. 75.00-87.50, 700-800 LBS. 70.00-77.00. HEIFERS: 300-500 LBS. 86.00-94.00; 500-700LBS. 79.00-87.50; 700-1000LBS. 68.50-73.50. S-L&M&L-2: 300-500 LBS. 79.00-84.50, 500-700 LBS. 73.00-80.00. STOCK COWS: BEEF 490.00-880.00; BABY CALVES BY THE HEAD,

WOBBLY 40.00-75.00, STURDY 75.00-140.00.

SLAUGHTER COWS: HIGH YIELDING COWS 54.50-57.75; UTILITY AND COMMERCIAL 2-4 50.00-54.50; CANNERS AND CUTTERS 1-3 43.75-49.75.

SLAUGHTER BULLS: 1&2 55.00-63.00.

LAMBS: BLUE O CHOICE AND PRIME WOOLED 55.60; SPRING 53.50; RED WOOLED 62.00-68.50; FEEDER LAMBS; SLAUGHTER EWES 12.00-25.00.

SOWS: 43.50-47.00.

SLAUGHTER CALVES: GOOD AND CHOICE 250-500 LBS. 76.00-88.50.



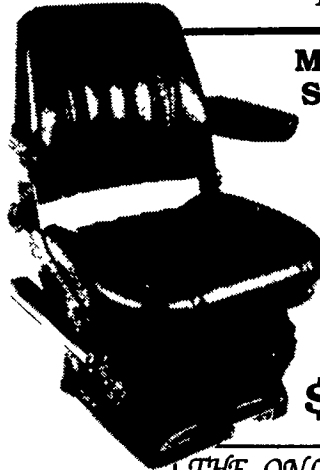
C.B. HOOBER & SON, INC.
Intercourse, PA
(717) 768-8231

HOOBER

TWO LOCATIONS

The Saving Place

HOOBER EQUIPMENT, INC.
Middletown, DE
(302) 378-9555



MECHANICAL SUSPENSION

IH 06, 56, 66 Series Tractors

ZSA6175

\$174.98

ZSA6173

\$437.69

REPLACEMENT SEATS
Black Vinyl

MECHANICAL SUSPENSION

IH 74, 84, 85 Series Tractors

ZSA8672

\$349.88



THE ONLY GOOD DEEDS YOU CAN BE SURE OF DOING ARE THOSE YOU DO TODAY

WE SHIP PARTS DAILY

Via FED. EXP. - UPS - PPSH - BUS - AIR FREIGHT, ETC.

HOURS

Mon -Fri. 7 AM-5 PM; Sat. 7 AM-Noon

CALL US...

It Could Be We Have It



Authorized UPS Station

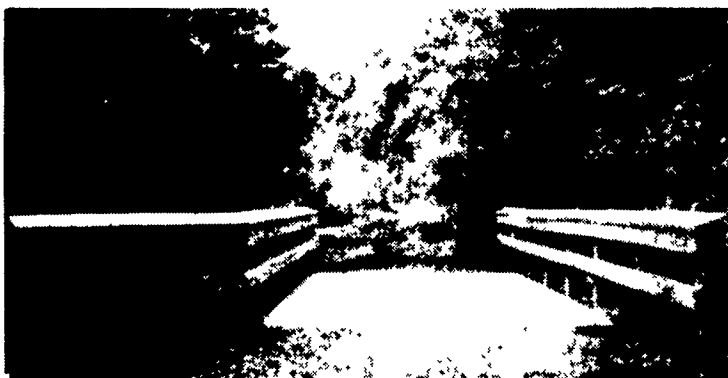
YOU STAY PUT

Pick Up Your Phone And Place Your Parts Order With Us



NEED A BRIDGE? Then Call On The "BRIDGE SPECIALIST"

CUSTOMER SATISFACTION IS #1



Lehigh George State Park, Carbon Co., PA

We Can Offer The Following Designs:

- Decorative & Rustic Wood
- Precast Concrete
- Concrete Structures
- Culvert Type

We Also Offer:

Repair & Maintenance of Bridges & Structures For
• AGRICULTURE • GOVERNMENTAL • PARKS
• INDUSTRIAL • RESIDENTIAL

- Stone Wall Repairs
- Dam, Reservoir & Spillway Repair
- Installation & Maintenance of Concrete Bunker Silos
- Slatted Floor Systems
- PreCast Gunite Lined Water or Manure Storage Tanks
- Silo Repairs

We're The "Concrete Specialists"

MAR-ALLEN CONCRETE PRODUCTS, INC.



Gunite Construction • Precast Concrete Products
Bridge Repair • Tank Repair • Holding Tanks • Installation • Pre Qualified by PennDot

RD #2
Ephrata, PA 17522
(717) 859-4921

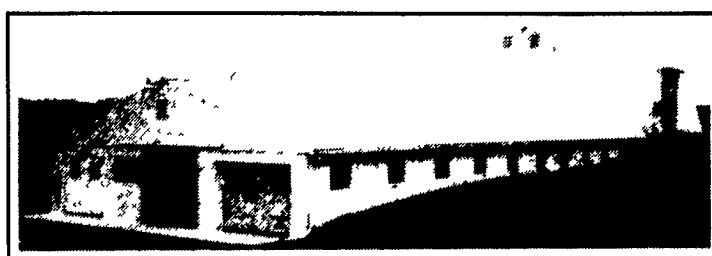
Two Convenient Locations!

RD #2 Box 18A
Cherry Tree, PA 15724
(814) 743-6334
Ask For Mike

Subsidiary of Seal-Crete Corp.

AGRI-INC.

**Custom Built Farm Buildings
Designed To Your Needs**



DAIRY TIE-STALL BARN

HORSE STALL BARN



Let Our Experience Work For You -

- Dairy Complexes And Replacement Stock Facilities
- Workshop And Machinery Storage Buildings
- Horse Stall Barns And Riding Arenas
- Timber Column Buildings For Light Commercial



AGRI-INC. The Construction Professionals

R.D. 4, Ephrata, PA 17522 • (717) 354-4271

Serving The Agricultural Industry For Over 20 Years

