

Huntingdon Co. DHIA



Monthly Report

January 1991 Rolling Herd Averages

Name of Herd Owner	No. Brd.	% Days Cows In Milk	Milk Lbs.	Protein Lbs.
Tannery Road Farms	B3 87.3	88.5	23,811	740
Joseph M McMath	3 48.9	84.0	19,587	667
Jim & Kim Grove	3 26.2	93.2	20,002	660
Gerald E McMath	B3 69.1	87.4	19,553	651
Harry & Robin Barnett	G3 49.4	88.9	20,637	648
Daland Farms	3 123.7	86.1	19,586	647
E James McMath	3 122.8	91.2	19,391	635
Timothy R Peachey	3 92.6	89.6	19,554	634
Dean E Varner	B3 26.9	86.7	19,882	633
Locust Lane Farms	B3 131.4	86.0	19,566	629
Sangrey Farms	B3 102.2	89.5	18,871	623
Raymond Tussey	B3 42.6	86.6	19,444	621
Lakevue Farms	B3 119.9	85.5	19,632	619
Samuel K Byler	B3 60.1	88.6	19,271	609
Ed & Nancy Quigley	B3 99.5	86.5	18,314	605
Carl C & Carol Barnett	B3 75.5	83.4	19,253	604
Philip A Yohn	G3 52.8	85.3	18,312	602
Geary E Shade	3 91.4	89.8	18,767	601
Randy Kyle	B3 52.0	87.5	18,119	601
Gibbonney Farms	3 63.5	88.2	18,970	598
Baney Brothers	B3 65.2	85.8	18,459	593
Branstetter Farms	B3 89.8	82.9	18,954	593
John W Lynn	B3 59.6	83.8	18,906	593
James Boone	3 44.4	86.3	19,734	593
Earl Lake	G3 120.0	86.5	19,746	592
Tom & Gloria Coffman	B3 91.9	87.5	18,530	590
Ferry & Cathy Futzv	B3 31.0	84.7	18,990	589
Seven Stars Farm	B3 92.9	89.5	18,637	588
Durbin Farms	B3 117.0	91.8	17,996	586
Colonial Farm Estate	B3 45.7	85.3	18,507	583
Willard Yoder Jr	3 139.1	84.5	17,919	579
B & D Acres	B8 148.3	87.2	18,006	572

Ed & Sharon Parsons	B3	53.5	84.5	17,154	561
State Correctional Inst	3	149.2	87.7	17,127	561

Lactation Report

Name	No. Brd.	% Days Cows In Milk	Milk Lbs.	Protein Lbs.	
Colonial Farm Estate Lisa	3	4-5	305	25,446	863
Timothy R Peachey Hopeful	3	5-7	305	27,128	838
Sangrey Farms 250	3	6-3	305	24,098	791
Douglas Myers Joy	3	6-0	305	25,742	789
Branstetter Farms Molly	3	4-7	305	25,537	782
Locust Lane Farm 0197	3	4-11	305	24,120	772
E James McMath Leanne	3	6-8	305	23,794	753
Gene Musser Poetry	3	3-6	305	25,607	749
Ed & Nancy Quigley 32Rib	3	4-4	305	22,711	748
Earl Lake 135	3	5-4	279	23,763	746
Gregory & Nancy Yocum Sandy	3	6-4	305	26,228	739
Gerald E McMath Beulah	3	9-2	305	22,188	735
N & N Farm 73	3	3-4	305	25,569	734
Thomas-Kathryn Houck 113	3	2-11	305	22,275	719
Lakevue Farms Reabett	3	4-9	305	23,451	718
Willard Yoder Jr 210	3	6-6	305	23,151	716
Joseph M McMath Caren	3	4-5	305	21,787	711
Evergreen Farm No 3 700	3	3-0	305	23,680	708
B & D Acres 64	3	5-8	305	22,717	706

FRANKLIN COUNTY DHIA

January 1991 Rolling Herd Averages

Name	No. Brd.	% Days Cows In Milk	Milk Lbs.	Protein Lbs.	
RV & SV Hollenshead	B3	134	25,115	960	796
Glenn & Mike Daugherty	3	135	22,110	751	713
Mike Flannery	B3	89	21,464	758	692
Robert E Harwood	3	113	22,163	813	688
Stone Hart Farm	B3	125	20,963	744	686

Lancaster Farming, Saturday, March 23, 1991-E3

Name	No. Brd.	% Days Cows In Milk	Milk Lbs.	Protein Lbs.	
Rohart Farms	3	156	20,974	791	675
Oakleigh Farms	3	117	20,458	799	675
John A Witmer	B3	41	20,894	729	663
Doug & Barb McCulloh	B3	93	20,287	707	661
Ivan D Horst	3	96	20,800	776	654
Stephen J Mellott	B3	128	20,123	744	651
Daryl R Crider	B3	107	20,650	779	648
Daniel D Eberly	B3	90	20,242	710	643
L&M Horst Farm	B3	128	19,835	720	641
Mark & Alan Meyers	3	91	19,867	714	637
Jaye & JC Young Jr	3	66	19,936	684	636
Aldus Eby	B3	61	19,919	680	623
Burk Lea Farms	3	187	19,342	654	619
Spring Haven Farm	3	75	19,452	635	619
Rodger T Kennedy	B3	73	19,377	666	619
Eugene L Martin	B3	82	19,165	677	619
Walnut Stuff Holstein	3	22	19,396	729	619
Marcus & Chester Martin	B3	89	19,532	720	619
Edwin R Eby	3	79	19,489	732	618
Roger A Negley	B3	64	19,514	687	617
Lee B Worthington	B3	131	19,264	727	616
Meyers Bros Dairy	3	164	19,554	709	616
Garnet Eshelman Jr	B3	43	18,986	689	612
Mervin & Rachel Frey	B3	61	18,781	721	612
Carl O Stuff	3	52	19,227	718	612
Marvin Zimmerman II	G3	69	18,894	667	611
David Hurst	B3	72	19,251	719	607
Culbertson Green Farm	B3	117	19,581	716	605
William C Ile	B3	94	19,478	685	604
J Eldon Crider	3	59	18,426	676	603
D B Wilhide & Sons	B3	131	18,333	660	602
Joseph S Middour	B3	115	18,357	712	602
Ernest & Anna Bert	3	54	19,680	714	601
Kenneth L Lehman	B3	59	19,461	651	600

Lactation Report

Name	No. Brd.	% Days Cows In Milk	Milk Lbs.	Protein Lbs.		
Marcus & Chester Martin Sally	GH	6-6	305	27,296	808	1026
James C Witter Janie	RH	4-4	305	27,083	826	847
Glenn & Mike Daugherty Kady	RH	3-6	305	27,018	859	756
Burk Lea Farms 78	RH	4-3	305	26,205	864	875
85	RH	4-7	305	26,251	802	807
Fred E & Dale Rice 799	RH	3-5	305	24,967	822	1039
Doug-Barb McCulloh 57	GH	4-10	305	25,933	821	749
RV & SV Hollenshead 166	RH	6-1	305	31,500	992	1082
263	RH	2-5	305	24,104	822	1132
271	RH	3-3	305	28,554	864	1187
317	RH	2-3	305	25,238	848	942



Get The Most For Your Fertilizer Dollar

A tight economy demands that you get proven fertilizer recommendations. Our recommendations are based on soil samples and fertilizers are custom mixed so you only buy what you need - not what you don't.

For efficient fertilizer management contact us for an accurate nutrient evaluation.

We Will Not Be Undersold!!

- Soil - Manure Testing
- Spreaders Available

Call (717) 367-3034 or (717) 653-9670



FARM TECH SERVICE, INC.

365 W. Bainbridge St.
Elizabethtown, PA 17022

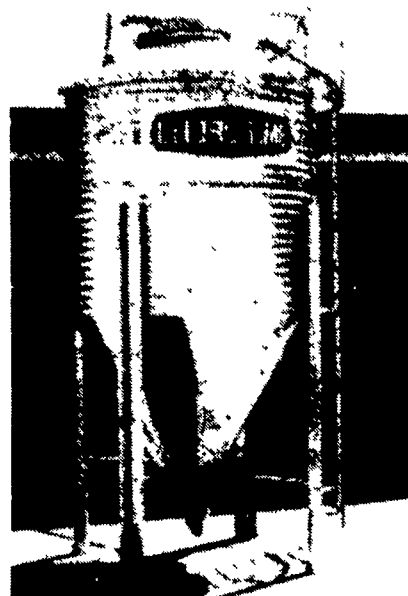
- Serving The Farm Community Since 1983 -

BINS & AUGERS

CHORE-TIME
FEED BINS

AND **FLEX AUGER**

Your Best Buy



The feed bin is the very heart of any feeding system. If the bin lets you down, the system quits.

That's why we put so many quality features into our complete line of feed bins - which includes 6-foot diameter steel or polyethylene (great for H M corn), 6-foot, 7-foot, and 9-foot models. All are available in several capacities - so you have a wide selection of bins to fit your needs.

Here are just a few of the quality features that make our bins such an outstanding buy:

- Sturdy Ladder System
- All Bin Seams Are Double Caulked
- Choice of 16 or 25 Inch Hopper Opening
- All Galvanized Steel Parts

We Will Assemble And Deliver Bins To Your Farm!

We Stock Truckloads Of Chore-Time Bins & Miles Of Chore-Time FLEX-AUGER

CALL OUR TOLL FREE CUSTOMER SERVICE NUMBER: 1-800-673-2580

Authorized **CHORE-TIME** Master Distributor



NORTHEAST AGRICULTURAL SYSTEMS, INC.
FLYWAY BUSINESS PARK
139 A West Airport Rd
Lititz, PA 17543
(717) 569-2702



STORE HOURS:
Mon.-Fri.
7:30-4:30