

\$25 REBATE PER PAIR

On 12 Popular
Sizes
Of Firestone
Traction
Field & Road!



ARMSTRONG

★ TUBELESS ★

Loader-Dozer

16 9x24, 8 Ply	\$289.00
16 9x24, 10 Ply	\$394.00
16 5x28, 8 Ply	\$317.00
17 5Lx24, 6 Ply	\$291.00
17 5x24, 8 Ply	\$295.00
17 5Lx24, 10 Ply	\$392.00
15 5x25, 12 Ply	\$352.00
17 5Lx25, 12 Ply	\$499.00
18 4x24, 8 Ply	\$419.00
18 4x24, 12 Ply	\$497.00
19 5Lx24, 10 Ply	\$470.00
19 5Lx24, 12 Ply	\$517.00
12Lx24, 12 Ply	\$602.00
20 5x25, 12 Ply	\$833.00
23 5x25, 12 Ply	\$1,265.00
23 5x25, 16 Ply	\$1,340.00

★ TUBE TYPE ★

14 9x24, 6 Ply	\$242.00
14 9x24, 8 Ply	\$256.00
16 9x24, 6 Ply	\$264.00
16 9x24, 10 Ply	\$350.00
18 4x28, 10 Ply	\$415.00
1300x24, 10 Ply	\$278.00
1300x24, 12 Ply	\$307.00
1400x24, 10 Ply	\$312.00
1400x24, 12 Ply	\$350.00

ARMSTRONG

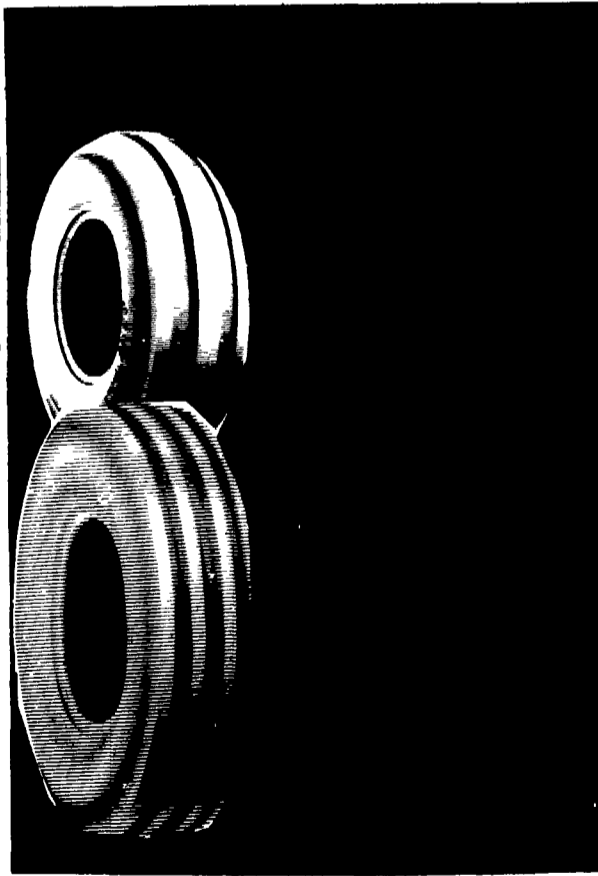


CALL FOR QUOTE
ON TRUCK TIRES!

WAGON TIRES

26 1200x12, 4 Ply	\$53.00
8 5Lx14, 6 Ply	\$51.00
9 5Lx14, 6 Ply	\$52.00
9 5Lx14, 8 Ply	\$53.00
9 5Lx15, 6 Ply	\$48.00
9 5Lx15, 8 Ply	\$48.00
11Lx14, 6 Ply	\$52.50
11Lx15, 6 Ply	\$46.00
11Lx15, 8 Ply	\$50.00
11Lx15, 10 Ply	\$74.00
1000x15, 8 Ply	\$63.00
11Lx15, 8 Ply Tubeless	\$58.00
11Lx16, 8 Ply	\$65.00
11Lx16, 10 Ply Tubeless	\$88.00
12 5Lx15, 10 Ply	\$78.00
12 5Lx16, 14 Ply	\$98.00
12 5Lx15, 12 Ply	\$90.00
14Lx16 1, 12 Ply	\$161.00
16 5Lx16 1, 10 Ply Tubeless	\$192.00
25x7 50x15, 4 Ply Tubeless	\$48.00
25x7 50x15, 6 Ply Tubeless	\$55.00
27x9 50x15 4 Ply Tubeless	\$59.00
27x9 50x15, 6 Ply Tubeless	\$68.00
27x9 50x15, 8 Ply Tubeless	\$73.00
31x13 50x15, 6 Ply Tubeless	\$102.00
31x13 50x15 8 Ply Tubeless	\$112.00

• WAGON TIRES SHIPPED UPS - NO CHARGE! •



ARMSTRONG

Hi Traction Lug

15.5x38, 6 Ply	\$260.00
11 2x24, 4 Ply	\$132.00
11 2x24, 6 Ply	\$154.00
14 9x24, 4 Ply	\$196.00
14 9x24, 6 Ply	\$216.00
14 9x24, 8 Ply	\$248.00
16 9x24, 6 Ply	\$251.00
16 9x24, 8 Ply	\$273.00
14 9x26, 6 Ply	\$222.00
18 4x26, 6 Ply	\$312.00
18 4x26, 10 Ply	\$380.00
23 1x26, 8 Ply	\$625.00
11 2x28, 4 Ply	\$154.00
12 4x28, 4 Ply	\$180.00
13 6x28, 4 Ply	\$192.00
13 6x28, 6 Ply	\$204.00
14 9x28, 4 Ply	\$200.00
14 9x28, 6 Ply	\$222.00
14 9x28, 8 Ply	\$256.00
14 9x28, 10 Ply	\$335.00
16 9x28, 6 Ply	\$273.00
16 9x28, 8 Ply	\$301.00
16 9x28, 10 Ply	\$352.00
16 9x30, 6 Ply	\$296.00
18 4x28, 6 Ply	\$363.00
18 4x30, 6 Ply	\$330.00
23 1x30, 8 Ply	\$705.00
24 5x32, 10 Ply	\$900.00
16 9x34, 6 Ply	\$323.00
18 4x34, 6 Ply	\$370.00
18 4x34, 8 Ply	\$400.00
20 8x34, 6 Ply	\$563.00
20 8x34, 8 Ply	\$590.00
23 1x26, 10 Ply	\$705.00
23 1x34, 8 Ply	\$771.00
11 2x38, 4 Ply	\$185.00
12 4x38, 4 Ply	\$210.00
13 6x38, 4 Ply	\$222.00
13 6x38, 6 Ply	\$246.00
14 9x38, 6 Ply	\$268.00
15 5x38, 8 Ply	\$318.00
16 9x38, 6 Ply	\$357.00
16 9x38, 8 Ply	\$392.00
18 4x38, 6 Ply	\$416.00
18 4x38, 8 Ply	\$446.00
20 8x38, 8 Ply	\$596.00
20 8x38, 10 Ply	\$704.00

8 YEAR WARRANTY

SERVICE AVAILABLE...

CALL FOR QUOTE!

CONTRACTOR F-3

11Lx15, 8 Ply	\$87.00
11Lx15, 10 Ply	\$102.00
11Lx16, 8 Ply	\$104.00
750 800x16, 10 Ply	\$99.00
11Lx16, 12 Ply	\$137.00
145 - 75 - 16 1, 10 Ply	\$246.00

11Lx16 10 Ply CALL FOR SPECIAL

3 WHEELER TIRES

20x7 00 8	\$38.00
21x7 00 8	37.00
22x11 00 8	42.00
22x8 00 10	45.00
22x11 00-10	50.00
25x12-9	60.00
18x950 8	41.00

ARMSTRONG TURF

8 3x24	\$118.00
9 5x24	\$131.00
14 9x24, 6 Ply	\$231.00
16 9x24, 6 Ply	\$242.00
18 4x16 1, 6 Ply	\$274.00
13 5x16 1, 8 Ply	\$275.00
18 4x26, 6 Ply	\$415.00
13 6x28, 6 Ply	\$268.00
13 6x28, 4 Ply	\$246.00
16 5Lx16 1, 6 Ply	\$309.00



Small Rear Farm Tires

750x20, 4 Ply	\$79.00
750x24, 4 Ply	\$87.00
8 3x24, 4 Ply	\$101.00
9 5x24, 4 Ply	\$113.00
11 2x34, 4 Ply	\$167.00
11 2x36, 4 Ply	\$169.00
12 4x24, 4 Ply	\$144.00
12 4x36, 4 Ply	\$227.00
13 9x36, 6 Ply	\$235.00

Central Warehouse
Mt. Joy, Pa.
717-653-1260

Serving Farmers In
Penna., New Jersey, Northern
Maryland and Delaware

Branch Warehouse
Northumberland, Pa.
717-473-3974

MUMMAU TIRE SERVICE CENTER

Out-of-State, Call: 717-653-1260

In Pa., Call Toll Free: 1-800-222-1729

**We Install Tires
On Your Farm**

- Centre Hall • Williamsport
- Sunbury • Allentown
- North Penna • New Jersey
- Northern Maryland

**Ask About Our
8 Year Guarantee
On Rear Tires**