

### Southwest Virginia Livestock Summary

Wytheville, Va.

Tuesday, March 19, 1991

ALL TRENDS COMPARED TO LAST TUESDAY SLAUGHTER HOGS 20 HEAD - NO TRENDS REPORTED. BARROWS AND GILTS US 1-3, 200-250 LB. 49.25 - 49.90 SOWS US 1-3, 300-500 LB 44.50 US 1-3, 500 LBS & OVER 45.00.

SLAUGHTER CATTLE 91 HEAD - NO TRENDS REPORTED.

SLAUGHTER COWS 88 HEAD COWS CUTTER & BONING UT 1-3 46.50 - 53.25 BREAKING UT. & COMM 2-4 47.00 - 54.25 CANNER AND LOW CUTTER 1-2 39.00 - 46.00.

SLAUGHTER BULLS 3 HEAD BULLS Y.G. 1-2, 1300-1600 LB. 53.00 Y.G. 1-2, 1600 LBS. & OVER 63.50 - 64.00

LAMBS TOTAL RECEIPTS 8 HEAD - NO TRENDS REPORTED FEEDER LAMBS 1 HEAD FEEDER LAMBS CHOICE AND FANCY, 70-85 LB. 52.50 EWES & RAMS 7 HEAD EWES ALL GRADES 10.00 - 23.50 RAMS ALL GRADES 22.50 - 24.00.

FEEDER CATTLE 187 HEAD - NO TRENDS REPORTED. STEERS MEDIUM 1 LARGE 1 SMALL 1 MED & LARGE 2 300-400 104.00-112.00 - - - 400-500 106.00-116.00 119.00 - 95.00-107.00 500-600 97.00-107.00 - 90.00-95.00 95.00-100.00 600-700 95.00-96.00 - - - 700-800 86.00-87.00 - - - HOLSTEIN STEER MED & LARGE 2 300-500 84.00-94.00 500-700 85.00-86.00.

HEIFERS MEDIUM 1 LARGE 1 SMALL 1 MED & LARGE 2 300-400 94.00-104.00 107.00 - 91.00-94.00 400-500 93.00-96.00 - - - 500-600 84.00-

90.00 - 75.00-77.50 77.00-82.00 BULLS MEDIUM 1 MED & LARGE 2 300-400 95.00-105.00 89.00-90.00 400-500 87.00-88.00 - COWS WITH CALVES AT SIDE 1 PAIR, M-2, 975 LBS WITH CALF 100 LBS \$750.00 PER PAIR. BABY CALVES RETURNED TO FARMS 13 HEAD NEWBORN TO 4 WK OLD \$110.00-200.00 PER HEAD

### Peoria Cattle

Peoria, Illinois

Thursday, March 21, 1991

FEDERAL-STATE CATTLE WEEKLY TRADING MODERATE COMPARED WITH LAST MONDAY SLAUGHTER STEERS AND HEIFERS .50 TO 1.00 HIGHER COWS AND BULLS FULLY STEADY SUPPLY MAINLY SELECT TO AVERAGE CHOICE SLAUGHTER STEERS AND HEIFERS WITH ABOUT 15% COWS RECEIPTS THIS WEEK ABOUT 700 AS COMPARED WITH 764 A WEEK AGO AND 894 A YEAR AGO

SLAUGHTER STEERS CHOICE 2-4 1050-1350 LBS 80.00-82.50 LOAD 1300 LBS. 83.00 MIXED SELECT & CHOICE 2-3 1000-1300 LBS 76.50-80.00 SELECT 2-3 950-1200 LBS. 73.50-76.50.

SLAUGHTER HEIFERS. CHOICE 2-4 950-1150 LBS. 79.50-82.00 MIXED SELECT & CHOICE 2-3 900-1150 LBS 76.00-79.50 SELECT 2-3 800-1050 LBS 72.50-76.00.

COWS BREAKING UTILITY AND COMMERCIAL 2-4 51.50-57.00 CUTTER AND BONING UTILITY 1-3 50.00-54.50 CANNER AND LOW DRESSING CUTTER 1-2 42.50-48.00.

BULLS: YG 1-2 1300-2300 LBS. 62.00-70.00 COUPLE 71.00

### Friend's Stockyard Inc.

Accident, Md. 21520

March 18, 1991

STOCK BULLS AND STEERS (200-400 LBS.) 88.00-120.00.

STOCK HEIFERS 70.00-106.00. SLAUGHTER STEERS GOOD TO CHOICE 75.00-79.50, MEDIUM TO GOOD 69.00-74.75.

HOLSTEIN STEERS HEAVY 62.00-68.50, LIGHT 57.00-64.00.

SLAUGHTER HEIFERS GOOD TO CHOICE 74.00-78.85, MEDIUM TO GOOD 64.00-72.00.

BULLS HEAVY 62.50-72.00, LIGHT 55.00-68.50.

COWS FEW HIGH DRESSING 55.00-58.25, UTILITY HOLSTEIN 47.00-55.50, CANNERS 43.00-52.50, COMMERCIAL TO GOOD 45.00-51.75, CULL COWS 43.00 AND DOWN.

VEALS GOOD TO CHOICE 90.00-108.00, MEDIUM TO GOOD 70.00-87.00.

BOB CALVES (40-50 LB. BUTCHER CALVES) 60.00 AND DOWN.

HOLSTEIN BULL CALVES, RETURN TO FARM (100-120 LBS.) 120.00-160.00. HOLSTEIN HEIFER CALVES, RETURN TO FARM (100-120 LBS.) 85.00-130.00.

HOGS TOP QUALITY 51.00-52.35, HEAVY 50.00-51.50, LIGHT 45.00-50.00.

SOWS 40.00-48.00. MALE HOGS: 35.00-40.50.

BUTCHER LAMBS: 47.00-71.00, FEEDER LAMBS NOT AVAILABLE, SHEEP 12.00-27.00.

EGGS: LARGE .80-.95, MEDIUM .60-.75 AND SMALL NOT AVAILABLE. LIVESTOCK PRICES ARE ALL GIVEN PER HUNDREDWEIGHT!

### Frederick Livestock Auction

Frederick, Md.

Monday, March 18, 1991

Report Supplied by Auction

SLAUGHTER COWS: 1.00 HIGHER. UTILITY 51.00-55.00; HIGH DRESSING 56.00-58.00, CANNERS 47.00-51.00; SHELLY 47.00 DOWN.

BULLS: YG#1 1300 LBS. 63.50; #2 57.00.

FED STEERS: NONE OFFERED. FED HEIFERS: FEW OFFERED; SELECT HOLSTEINS 1200 LBS. TO 62.25.

VEAL CALVES: GOOD AND CHOICE, NONE OFFERED; CULLS 80-110 LBS. 58.00-68.00; 50-80 LBS. 50.00-60.00; WEAK/ROUGH/THIN 48.00 AND DOWN.

FARM CALVES: VERY ACTIVE! HOLSTEIN BULLS FEW TO 161.00; #1 85-120 LBS. 135.00-155.00; #2 70-100 LBS. 110.00-135.00.

HOLSTEIN HEIFERS: 95-120 LBS. 140.00-177.00; 75-90 LBS. 100.00-130.00; BEEF X BULLS 150.00-200.00; HEIFERS 100.00-170.00.

BUTCHER HOGS: 25 HEAD, .50 HIGHER. US#1-3 215-260 LBS. 51.00; 200-215 LBS. 48.00-50.00; 1 LOT 265 LBS. AT 50.50.

SOWS: 10 HEAD. 300-500 LBS. 44.00-47.50; THIN 40.00-44.00.

BOARS: 400-650 LBS. TO 39.75.

STOCK CATTLE: MAINLY HEIFERS; STEERS, FEW OFFERED; NO LIGHT WEIGHTS. 750-900 LBS. 68.00-75.00; 1 HOLSTEIN 350 LBS. AT 86.00.

HEIFERS: 500-700 LBS. 72.00-83.00;

700-900 LBS. 67.00-75.00; HOLSTEINS 350-500 LBS. 74.00-86.00.

BULLS: 500-800 LBS. 74.00-87.00; HOLSTEINS 300-500 LBS. 75.00-76.00. LAMBS: 12 HEAD. 70-80 LBS. 64.00-66.00, 1 AT 79.00; 90-110 LBS. 50.00-51.00.

SHEEP: 18.00-24.00.

GOATS: 2 MEDIUM 51.00 AND 58.00 PIG AND SHOATS: 85 HEAD. BY THE HEAD 25-35 LBS. 42.00-46.00; 40-50 LBS. 45.00-49.00, BY THE POUND, 160-180 LBS. 46.00-48.00.

STOCK BOARS: 6 HEAD, 215-260 LBS 40.00-44.50; 1 290 LB AT 40.75

### Grantsville Livestock

Grantsville, Maryland

Sat., March 11, 1991

HOGS: TOP BARROWS & GILTS 49.50-52.50, HEAVY BUTCHER 48.00-51.50, LIGHT BUTCHER 42.00-49.50, BUTCHER SOWS 40.50-47.50, FEEDER SHOATS 20.00-58.00.

VEAL: GOOD 90.00-105.00, STANDARD 65.00-85.00, UTILITY 40.00-60.00, BULL CALVES 100.00-150.00.

SHEEP & LAMBS: GOOD 52.00-59.00, UTILITY 45.00-50.00, SLAUGHTER EWES 10.00-16.00.

SLAUGHTER CATTLE: GOOD 70.00-76.00, STANDARD 65.00-68.50, UTILITY 60.00-62.00.

HEIFERS: GOOD 68.00-75.50, STANDARD 62.00-65.00, UTILITY 58.00-60.00.

COWS: A FEW TO 62.00; COMMERCIAL 49.00-55.00, UTILITY 46.00-48.00, CANNER AND CUTTER 40.00-42.00.

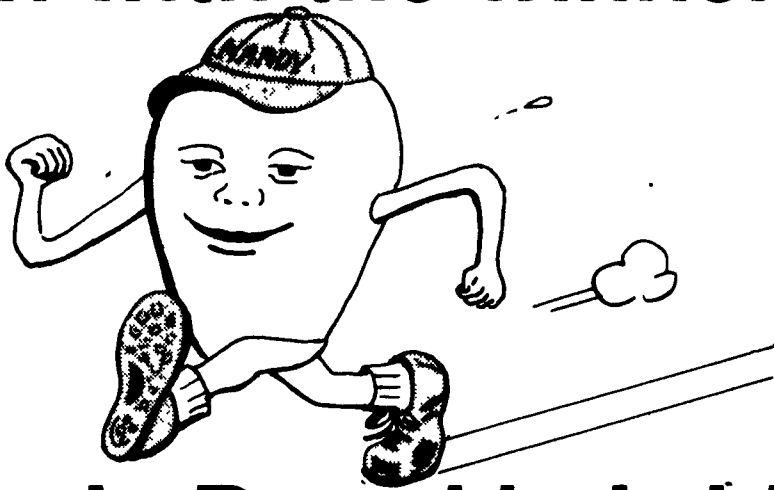
BULLS: COMM. & GOOD 65.00-70.50, CUTTER AND UTILITY 58.00-62.00.

STOCK-FEEDER CATTLE: GOOD 85.00-95.00, MEDIUM 65.00-75.00.

STEER CALVES: GOOD 95.00-115.00, MEDIUM 80.00-90.00.

HEIFERS CALVES: GOOD 85.00-105.00, MEDIUM 75.00-80.00.

# Run with the winners!



## Hardy Brand hybrids are setting track records.

### Head to Head Comparisons Pennsylvania Commercial Hybrid Corn Results, 1989

Variety	Yield
Hardy Brand Pioneer	130 bushels/acre
Hardy Brand DeKalb	133 bushels/acre
Hardy Brand Doeblers	147 bushels/acre
Hardy Brand Hytest	152 bushels/acre
Hardy Brand Northrup King	152 bushels/acre
Hardy Brand Funks	152 bushels/acre
Hardy Brand Pioneer	124 bushels/acre
Hardy Brand DeKalb	132 bushels/acre
Hardy Brand Doeblers	145 bushels/acre
Hardy Brand Hytest	147 bushels/acre
Hardy Brand Northrup King	147 bushels/acre
Hardy Brand Funks	147 bushels/acre

### Hardy Brand Varieties for Your Region...

370XS - 105 days - excellent high yielder for grain or silage.

HB6713 - 110 days - superior grain or silage production.

HB6923 - 109 days - top grain yielder for this maturity.

HB6270 - 114 days - excellent grain yields.

HB6969 - 116 days - excellent for grain or silage.

797XS - 117 days - grain or silage hybrid for this maturity.



**HARDY BRAND SEEDS**  
Beachley-Hardy Seed Company  
P.O. Box 336/Camp Hill, PA 17001-0336/(717) 737-4529

### BARN SPRAYING IS OUR BUSINESS

WE WHITWASH OVER 1,000 BARN A YEAR USING ADVANTAGE FARM WHITE

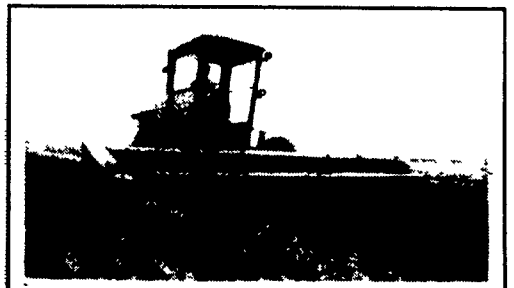
- DRIES WHITE • NO WET FLOORS • IS COMPATIBLE WITH DISINFECTANT AND FLY SPRAYS
- DOES NOT RUB OFF EASILY
- WASHES OFF WINDOWS & PIPELINES EASILY

BARN CLEANING SERVICE AVAILABLE WITH COMPRESSED AIR

### BEITZEL'S SPRAYING

Witmer, PA 17585  
717-392-7227 or We will take work Toll Free within 100 mile radius of 1-800-727-7228 Lancaster  
7:00 AM to 5:00 PM CERTIFIED COMMERCIAL APPLICATORS LICENSED INSURED  
★ Spraying Since 1961 ★

### PRO-CUT ALFALFA



VERY HIGH DISEASE RESISTANCE PLUS RESISTANCE TO APHIDS. PRO-CUT IS VERY LEAFY AND IS BECOMING A FAVORITE AMONG DAIRYMEN IN OUR AREA. PRO-CUT IS OUR MOST POPULAR ALFALFA VARIETY BECAUSE OF ITS QUALITY STANDS.

What Will Your Stand Look Like 3 Years From Now? Plant Pro-Cut High Disease Resistance



### CHEMGRO

P.O. Box 218, State Street East Petersburg, PA 17520  
1-717-569-3296  
1-800-346-4769 (GROW)