

**MAILBOX MARKET
FOR SALE**

Ear corn organic grown app. 8 ton York Co 717-755-8635

MF 300 combine 10' grain head 2 row corn head, also ear corn. York Co. 717-244-8748

Jersey bull calf born Feb out of volunteer dau by Brigadier, also Morgan stud service. Sam Ebersole, 1061 Osceola Rd., Drumore, Pa. 17513

W.H. machine 2 way plow \$2400, 9' JD harrow \$400, JD 420 crawler loader \$1000 OBO. S. Levi Stoltzfus, RR 2 Box 376, Parkersburg, Pa 19365

Tobacco stems, for gardening & field use, \$40 per bundle minimum 10 bundles Lanc Co. 717-626-4191

Bucket for JD 50, 60, 70, series, no reasonable offer refused, works good Monroe Co 215-681-4134.

Log splitter 3 pt hitch 4" cyl 8' hoses quick coupling \$250, JD 10' transport disc \$500. Adams Co 717-334-5991

64-65 Ford 750 bulk truck blower, auger to fly dulicks work, needs minor work V8 5+2 runs good \$1450 OBO York Co 717-229-2720 Ric

WC tractor w/rear mtd. loader \$1700, 450 IH tractor \$1500. Lanc Co 717-284-4141

New fert boxes, shoes, press wheels, misc parts for MF 468 cornplanter \$100 York Co. 717-235-6733

Dodge 1 ton dump truck 4x4 1977 8' snow plow, nice, Farmall M \$1500 nice Leb Co 717-838-2543

27-17 5 reg. tres \$25 a pr, 1-700x16 new \$25, 1 large 2 way hyd cyl 717-948-7895 eve

1965 Chev dump truck 26,000 GVW \$2000, 1090 Gehl haybine \$3000, 2 horse trailer \$850 Lanc Co 717-529-2571

Dozer angle blade JD 2010 diesel, strong engine tracks sprockets, excel., 6 way blade \$4400. York Co. 1-717-993-3350 after 7 p.m

Jeep Cherokee Larado, 1990, red, 4 dr., 4WD, fully loaded \$17,500, 2 horse quarter horse trailer, new paint \$1100. Chester Co 215-269-2858.

Collectors guns, JP Sauer 12 ga double, Winchester 64 30-30, Savage 99 take-down 250-3000 serious calls! 301-398-7680.

IH ground drive corn binder 2-row Oliver potato digger potato sprayer 300 gal potato beater potato grader picking table potato baskets. Lanc Co. 717-354-9935

Holland transplanter, 2 or 3-row, \$1000 or \$1200, NH 273 baler-thrasher, super sweep \$2150 Lanc Co 717-653-5344.

AC 600 air planter 4 row fert boxes monitor needs wires \$800 offer Lanc Co 717-687-7336 nights

1969 Mack MB400 20' flatbed diesel truck, good hay hauler \$1500 OBO Leb Co 717-949-3529 after 9 p.m

36 cow 1 1/2" glass pipeline, 3" vacuum line surge alamo pump \$1500 or best offer. Berks Co 215-285-2414.

625 gal Sunset milk tank 3 HP compressor \$1600 Mineral Co W.Va 304-726-4708, 304-726-4380

Virus free peach trees 15 varieties low as 4 50¢ free catalog, write Fisher's Nursery, 494 White Oak Rd., Strasburg, Pa 17579

18' flat truck bed good as new \$285, new 6"x12" hyd auger for gravity bin \$485 Carroll Co 301-775-7356.

JD 1240 4 row platess corn planter no insect boxes \$600 Centre Co. 814-692-8678

English Ford car motor & 4 spd trans, \$125, KB5 int cab & chassis \$125 York Co 717-292-1802

Hereford feeder steers 400 to 500 lbs., nice heifers for sale also. North'd. Co. 717-672-2634 eves.

JD 4020 NF. S.R. good cond. Leb. Co 717-273-8355.

IH #2000 loader w/controls \$600/2 48 volt forklift batteries w/3 phase charger \$100. Cumb. Co. 717-776-5749

Dunlap Mimeograph 1985 model very good cond. 218, 244, 245, spreader between 5 & 9 p.m

JD 4 btm. rollover plow \$1800, NI hyd. endgate 218, 244, 245, spreader tandem axle \$450. 301-848-8638.

Millville coal or wood stove, 120,000 BTU, inducer, thermostat, fan, plenum, manual grates Lanc Co 717-548-2094.

AC snap coupler hay rake, AC 44 disk harrow on wheels 50 egg incubator 2 row tobacco planter chick brooder Lanc Co. 717-653-4288.

2 No. 6 NH self-unloading wagons \$500 or OBO, Oliver 66 w/cults, \$850 OBO, 4 12" tires on Datsun wheels, 1/2 tread, \$50 L. Dau. Co. 717-367-1686.

Roof for forage box, parts for Grove forage box, locust elect fence posts 2x2. Lanc. Co. 717-367-3234.

3 pt disc good cond., \$195 or best offer, 1982 Ford exp lots of extras \$1,395. Berks Co 215-678-3099.

F-20 Farmall tractor w/ mounted 7 cycle bar mowing machine, McCormick Deering 200 manure spreader kept inside Bedford Co. 814-784-5640

Hay wagons 18' steel factory built wide track expandable tongue. Balto Co Md. 301-374-4314.

Sold #419 mist Blower 12 1/2 HP 200 Gal. tank mounted on 2 wheel trailer like new cond., \$800. Perry Co. 717-957-4907 call 7-9 p.m.

Corrugated roofing tin 10"x34" & other sizes, also negotiable boxes, also concrete toils 12" diameter.

Amos Hoover, 682 Reidenbach Rd., New Holland, Pa. 17557.

Purebred Jersey calves, new forecarts, new harrows, cultipackers & sprayers, 2 horse McCormick cultivator, two wheel trailer. Lanc. Co. 717-355-2758.

1940 AC "WC" tractor, clean, new paint, \$700. Lehigh Co. 215-433-2405.

Troy Bilt pony 5 HP rototiller 15 hrs., use \$650, 4 10.20 mounted tires, \$125, 3 hyd. cyl. Perry Co. 717-780-3979 eves.

Brillion 14' cultimulcher, set up to incorporate, \$2350, JD 2500 5-btm. plow, very nice, shedded \$3350. York Co. 717-993-6226.

Pheasants: Red golden, yellow golden, swinhoe, male silvers. Also wanted: Amherst hen. Somerset Co. 814-267-4606.

Heavy duty Int. #501 deisk harrow \$2300. Lanc. Co. 717-786-1997.

Recleaned seed oats, JD 3 ph. 4B16" plow, JD 2510 diesel, timothy hay, 12' disk, Int. transport, JD 14T baler, \$350. Montg. Co. 215-256-8533.

McCurdy bin without gear \$500, also weathered barn siding Christian S. King, 480 Hammercreek Rd., Lititz, Pa. 17543.

NH 311 baler & 456 mower never used, also used 402 crimper, Brillion packer, seeder, new & used. 717-656-9733.

10 Winross trucks, all local from Lanc. Co. to be sold as one lot, B.O. Lanc. Co. 215-267-3103 after 6 p.m.

Farmall M \$1000, JD 24T baler w/kicker \$800. Luzerne Co. 717-379-3516.

Wis. engine V465D runs good \$2000, V-8 Chrysler irrigation pump, 6x6 marlow pump good, motor needs work. Cumber. Co. 609-451-2309.

Used 7000 cornplanter fert auger fill 4-6-8-R \$200, monitor tubes \$20 Gideon Stoltzfus, 561 White Horse Rd., Gap, Pa 17527.

Diesel 45KW generator & automatic transfer switch,

solid state controls, 12 leads, 30 KW single phase, battery charger, dailer, complete. Lanc. Co. 717-664-2629.

36" double house trailer frame, wild turkeys, hen, gobblers. Wanted: Black silky rooster. York Co. 717-252-3589.

JD 346 baler w/ejector real nice \$5600, JD 4320D WF SC dual hyd. 1700 hrs., complete overhaul. Lanc Co. 717-872-6601 or 717-633-5508.

Timothy hay no rain about 500 bales. Balt. Co. 1-301-357-4186 call anytime.

450 fresh cut locust posts, 7' long, one or all. Perry Co. 717-789-4242.

1984 Int. Eagle COE NTC400 13 spd, PS, AC jake airride wetline, also 1974 Dorsey dump trailer, leave message Union Co. 717-966-1274.

Good quality 1st cutting hay, mostly mixed, some alfalfa & clover \$70/ton, also clean straw, mostly wheat \$1/bale. Dau. Co. 717-896-3065.

Computer, commodore 64, including color monitor disc drive, printer, paper, software, desk organizer, programs, excel. cond., \$485. Leb. Co. 717-273-5941.

Allis-B 2 row corn planter, 75 bu. David Bradley spreader, 11 Wood windows 42"x66" w/storm windows. Lanc. Co. 717-367-2121 or 717-367-3525.

Waukeska power unit same as Oliver 770 engine brand new in crate B.O., JD 2500 5 btm semi-mount plow. 413-665-3304.

479 haybine \$1,300, (2) transport disc \$300, \$350, NH baler 270 \$700, manure spreader \$700, 1964 Pontiac Lemans \$3500. 717-734-3592.

A-Ford motor 260' cherry lumber, T-Ford parts, bucket a day stove, wagon made on T-Ford running gears. Fulton Co., 717-987-3816.

Mew Amish carriage, 12V, blue interior, fiberglass

btm. Brandywine Carriage, 6273 Meadville Rd., Narvon, Pa. 17555. Lanc. Co. 215-273-9642.

F-20 Farmall looks runs good, make offer, good pair 15.5-38 1/3+ tread: 52, JDB parts: no Sunday calls. York Co. 717-382-4437

NI 324W 2R picker w/327 husking bed, picks clean, good rubber on rolls \$2995. Lanc. Co. 215-445-9544.

Good milk & butter cow, Ataskan Malabou mixed w/ German shepherd free to a good home, 18-ton double feed bin. Levi R. Stoltzfus, 2622 Valley View Rd., Morgantown, Pa. 19543.

Diltz & Weltzel potato cutter 4 row McConnell potato planter, Myers sprayer 500 gal. steel tank boom type 10 row. 717-784-7649.

Athens-Rhino disk #131 12' like new. Berks Co. 215-682-2376.

3 pt. 12" auger post hole digger \$125, bucket \$150. Berks Co. 215-562-2118.

Tew veg washer Farmall 140 w/cults., Ford 800 gas. Chester Co. 215-286-5641.

100 gal. liq fert., \$5.75, Sears coal or wood stove \$25. Sch. Co. 717-345-4015.

JD 2010, w/JD 36 loader, scraper blade, 5' rotary mower, post hole digger, 12" auger, \$4,000 OBO. Schuyl. Co. 717-345-8723.

IH 800 cyclo 4RN planter I. fert. monitor insect., \$4000, IH 56 blower \$1000, IH 540 plow \$500, IH 460 tractor w/loader \$3000. Franklin Co. 717-352-3534.

Solid walnut hand dove-tailed chest \$375, quilt rack \$75. Lanc. Co. 717-665-5513.

5-45 loader teeth \$250, 2x12' pieces of #100 roller chain almost new 250' JD 407 rotary mower 8' wide \$900, JD semi-mounted 1450 trip plow \$1,200. Union Co. 717-524-4901.

JD KBA disc \$400, Mellinger dry preserver applicator steel wheels 27 1/2 x 7 1/2 6 lug 25x5 1/2 4 lug. Lanc. Co. 717-733-4647.

Hay, alfalfa, orchard grass, timothy-mixed 40# bales \$2

\$70 ton, excel. horses, mulch hay a \$1. Bucks Co. 215-862-2506.

Hospital bed, elect. w/ mattress, good cond, \$250 Lanc. Co. 717-665-4182.

Fordson road roller tractor extra engine 301-287-5984, metal shaper, 16" stroke, 6" vise, single phase. 301-398-7680.

22 Ga. Pittsburg machine, 30" rolls, 2' box & pan brake, 20" & 30"-barfolders York Co. 717-792-9282.

15 colonies bees, bee supplies, supers comb honey supers, pierce, uncapping knife frames foundation 717-394-5113.

Single btm. plow, 3 pt. hitch like new \$95. York Co. 717-755-1364 call after 6 p.m.

Cub Cadet model 1000 10 HP 44" mower deck nice cond., \$975, Brinley plow & cult., \$50 ea. York Co 717-244-3415.

8 1/2" radial arm saw w/hyd motor \$600, stroke sander w/6" wide 7' long belt \$900 Lanc. Co. 717-355-9890

Myers 100TM field sprayer 21' boom 10 GPM \$550, Int. plow 2 pt. hitch 3-14" btm's. \$400. Adams Co 717-334-1784 eves.

Woods 348 belly mount finish mower w/everything needed to mount on 18 HP Mitsubishi, including front clutch. Montour Co. 717-437-3644, 6-7 p.m., ask for Mike.

2 pair of large ice box hinges, solid brass & refinished \$80. Pike Co. 717-588-6350.

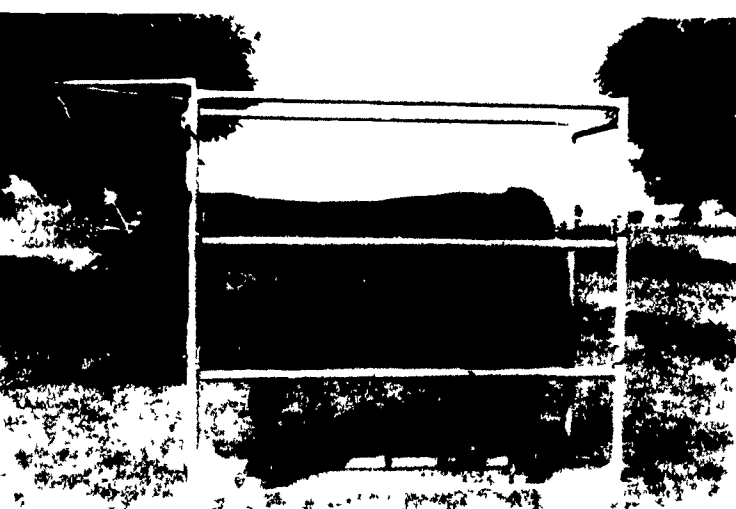
Reg. Nubian dairy goats, also wether kids \$50, send for list, Breezy Timber, 20325 Kirkwood Shop, White Hall, Md. 21161 301-343-0026

Zero dumping station, milk filters, bender washing unit, 2 line dryers. Bradford Co. 717-265-9299 leave message.

Small antique metal pie ovens to set on wood stoves- 12"x12"x12", front door glass viewing panel \$35 Bucks Co. 215-968-2649

PAUL B. Zimmerman INC.

GROOMING CHUTE



- Coated with baked on TGIC Polyester Urethane Powder
- For safe and easy grooming, washing and clipping cattle
- Expanded metal floor stays cleaner and gives more traction
- Assembles and disassembles quick and easy
- Can easily be moved and loaded by one person

PAUL B. ZIMMERMAN, INC.

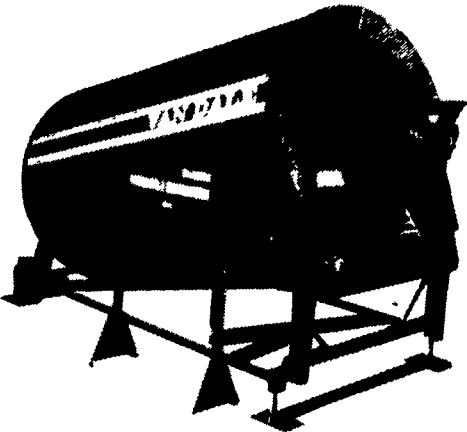
Call or Write For Additional Information And Your Nearest Dealer

295 Woodcorner Rd Lititz, PA 17543 1 Mile West of Ephrata Phone: 717-738-1121

VAN DALE

Dependability through Quality

THE BRAND NEW ORBIT II MIXER



By VAN DALE

EXCLUSIVE HYDRAULIC DRIVE ELIMINATES ALL CHAINS, SPROCKETS, BELTS & PULLEYS-

ONLY 12 MOVING PARTS!

Exclusive Planetary Drive — Five Year Warranty

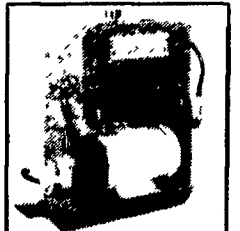
The Right Options For Any Operation
Extra Large Power Hopper Accommodates Several Conveyors At Once Or Front-End Loading.

- Simple
- Safe
- Proven Reliability
- Complete Speed Control Of Mixing And Discharge
- Allows For Long Hay Capability



Hydraulic Power Pack

Place It Where It's Most Convenient For Your Operation



For Additional Information And Literature Write Directly To:

VAN DALE
P.O. Box 337 Long Lake, MN 55356
612-473-7395

★ DEALER INQUIRIES INVITED ★

CONTACT YOUR LOCAL VAN DALE DEALER

- | | | | |
|--|---|---|---|
| FRANKLIN'S FARM SERVICE
Laceyville, PA 717-888-2407 | K & S INC.
Quarryville, PA 717-284-3111 | PAUL JACKSON'S LIVESTOCK SYSTEMS
Troy, PA 717-297-3872 | RYDER SUPPLY CO.
Chambersburg, PA 717-263-9199 |
| HISTAND'S FARM & HOME SERVICE
Rome, PA 717-744-2371 | LANCASTER SILO CO. INC.
Lancaster, PA 717-299-3721 | PRESTON DAIRY EQUIPMENT
Brookway, PA 814-371-5373 | STAR SILOS
Myerstown, PA 717-866-5708 |
| | McMILLEN BROTHERS
Loyeville, PA 717-788-3861 | WIGGERS FARM EQUIPMENT
Cory, PA 814-864-2881 | |