

**MAILBOX MARKET
FOR SALE**

6' blade to fit on IH fast hitch. Millin Co. 717-899-6259.

Platform scales \$95. Chicken battery \$100; 3 hog, pre-nursery stainless steel feeders \$35 ea. Lanc. Co. 717-664-2739.

Locust posts, sawed and split, Maytag wringer washer, also some other rough sawed lumber, Lanc. Co. 717-354-7151.

McCormick Deering 2 row corn planter, rope lift fertilizer hoppers, insecticide appl. \$500. NH 513 spreader top beater \$1800. Lanc. Co. 717-656-6455.

2 1/2 hp Ryobi plunge router like new, Rockwell table saw with T-square fence, big table. Lanc. Co. 717-354-9715.

1985 Chevrolet Scottsdale PU 6.2 diesel, grey loaded, 61M \$5800. or trade for extended cab. Lycoming Co. 717-998-9638.

Mixed grass haylage out of field, approx. 30 acres, available in May. Owner will cut and windrow. Juniata Co. 717-436-8479.

265 MF diesel tractor, new brakes, tires and PTO, also 12' spring tooth harrow. Wayne Co. 717-937-4136.

1 set of John Deere 3 pt. hitch, trip back plows \$150 301-666-1680.

Stone rake 3 pt. 7' wide \$350 JD 3 pt. 2 row planter \$250. Ford 3 pt. cultivator \$50. Montg. Co. 215-646-3113 after 6 p.m.

Electric wringer washer with double tubs, also old school desks, no Sunday calls. Cumberland Co. 609-691-5103.

Dog kennel 10x16 red barn with 8 wire runs 2x8, \$1600. AKC black male poodle 3 yr. old, 3 Black mules, 1 smooth mouth 15

yr., 16 yr. 16 hands. Daniel U. Kauffman, Beaver Dam Road. Chester Co. 215-273-2406.

2 16.9x34 tires 6 ply used with tubes \$100 each or \$160 for two 1-12.4x38 4 ply \$60. All 60% tread. Lycoming Co. 717-546-5708.

New Idea solids II plus manure spreader, model 3825 used one year. Lyc. Co. 717-546-3804.

One 12-4x48 used tractor tire, two tubes used. 12-4x28 Sch. Co. 717-386-5315.

JD 4 bottom rollover plow, JD 3 bottom rollover JD 40 combine, field ready, best offer. Berks Co. 215-683-8074.

John Deere 3010 diesel, wide front, ROPS, remote outlet, recently overhauled \$5200. Berkeley Co. WV 304-754-7615.

1973 Mercedes 450 SLC classic coupe, new silver paint, nice interior, ex mechanical cond. Alloy wheels, all powers \$10,000. Leb. Co. 717-274-5146.

300 gal. 3 pth. Century sprayer, like new, IH 10' 350 disc, 10 filter-eze farrowing decks. Franklin Co. 717-328-2336.

IH 1 pr. corn picker, good cond. Reg. border collie, 3 yrs. old, remale very friendly, \$75. Union Co. 717-922-4447.

IH 27 baler w/no. 10 thrower \$875, 10 ft. plastic mulch layer \$950, 3 head panel raiser shaper \$950. Northumberland Co. 717-286-5306.

Ford 142 plow 4 bottoms spring reset \$800. Orange Co. NY. 914-469-9946 8:30-12:00 a.m.

Mobile home 10x50 1969 Zimmerman, good cond, free must move quickly. Bucks Co 215-968-5167

NH 268+66 PTO balers w/ wagon chutes, \$1475 + \$575. Wisconsin "TFD" baler engine setup complete \$300. Possible delivery, Carroll Co. 301-848-0711.

411 NH disk bine hydraulic tilt and hitch \$4000. Berks Co. 215-693-6158.

21 ft. Prowler camping trailer, self contained, bathroom, furnace, gas, electric refrigerator, sleeps six \$3500 OBO. 215-347-2152.

1986 Ford E-150 van 6 cyl. stick AC, PS, radio with tape, new insp. \$3495 Montg. Co. 215-287-9897.

Fertilizer tank nitrogen 5000 gal. Chester Co. \$1000. 215-932-8072.

16.2 5 y.o. bay TB gelding, quiet, clean legs, attractive, started over jumps, supper willing. \$3000. 215-869-8998.

2 Jersey bulls born 12-25-90 on feed ready to go \$125 each cash Chester Co. 215-593-6484.

White farm truck, 26,000 GVW 20' steel flat, good 350 Chev. eng, 5 spd. with 2 spd. rear, farm permit sticker \$600. York Co. 717-244-3146

Certified Noble oats 4.40 bushel, York Co. 717-292-5463.

Forklift Clark .3500 lbs. air tires, good ocnd. \$2200. Also 1 1/2 ton chain hoist \$75. Lanc. Co. 717-354-9368.

7 yr. old saddlebred with a lot of snap, safe but needs road. Call after 6 p.m. or Sat. 215-445-5911.

Farmall 504 tri with 3 cyl Deutz diesel and reverser on expanded metal steel with rubber blocks \$2700. Lanc. Co. 717-733-1367

MF 520 disc 11 ft w/new discs and bearings \$2000, 3 55 ring gear and pinion from 1988 F350 \$150.

Fred. Co. Md. 301-371-6141.

V1702 Kubota engine for parts, 10 in. Edison band saw, vari speed, like new Craftsman 1/2 in. drill. Lanc. Co. 717-354-8970.

500 gal. ice bank milk tank \$250 OBO, one 13.6-28 tire 25% tread \$15. Bucks Co. 215-249-3633.

Int. 400 cyclo corn planter, 4 row with fert. boxes and Dickey-John monitor, Lanc. Co. 717-664-2430 after 6 p.m.

Corn silage \$20 ton, no weed seeds. Chester Co 717-593-5656.

82 Ford pickup, 6 cyl., 4 spd. 88000 miles \$1500 8x24x20 new recaps \$50 each 028 Stihl saw \$150. Cumb. Co 717-766-1205

NH 28 blower \$995, Badger chuckwagon 3 axle \$3500, posthole driver \$1000. JD 2030 \$5500. West Md. 301-848-1324.

Hand hewn barn beams 17 1/2 feet long, \$15. Pine and hemlock barn boards of varying widths. Lanc. Co. 717-392-5329.

3 pt Landoll chisel plow, 9 tooth 3 bar \$995. Field ready. Lanc. Co. 717-665-5683.

Percherons 20 month grey gelding, big stout \$1000, 7 month black filly, real stocky \$450. Leb. Co. 717-949-3246 after 6 p.m.

John Deere 214 riding mower, 39" deck, good condition \$2195. 21" self-propelled Lawnboy mower \$125. Lanc. Co. 717-665-5848

MF 135 diesel tractor just overhauled w/PS multi p. remote control, expanded metal steel wheels. Lanc Co 717-859-2374.

JD 440 Ind. NH tandem axle spreader; 717 NH harvester; 8 ft land roller; Ford 1/2 ton pickup 1973. 717-626-5678

D3-152 Perkins diesel engine, 35 HP, good cond. \$1,250. Lanc. Co. 717-656-3322.

Ford 8N Runs good, WFE, 5' rotary mower, good cond. Landpride 15-72 6' rear scraper blade, like new \$2500. Takes all, can deliver. Lanc. Co. 717-442-9493 or 215-430-6694.

JD gauge wheels for grass pickup attachment, selling parts from JD 5 ft. pickup attachment, NH 717 w/ grass pickup attachment. 717-665-4743.

JD A cyclone good cond. 1100 OBO, JD 2020D runs good, parting out 41 JD B Lanc. Co. 717-733-0575.

2 mantle Coleman gas lantern in good shape, steel wheel wheelbarrow, show case with window. Lanc. Co. 717-354-0616.

IH 56 cornplanter, 4 row has Gandy boxes \$875. 200 Farmall tractor fast hitch \$1295. NI cut/ditioner \$1195. NH 469 haybine \$1195. JD 14 baler \$595, IH 46 baler \$385. 717-354-9144.

Chiangus bulls black, meaty, well made, easy calving, good tempered. 717-867-1266. Leb. Co.

19x20 maple butcher block 2-16-1826 ex. Swab pony wagons one restored, mint one good. Leb. Co. 717-865-7390 after 5 p.m.

GE frost-free refrigerator 11.5 cubic ft, very nice, \$250. Lanc. Co 717-394-4219

20x50 Martin steel silo, make offer. Dauphin Co 717-367-2520.

Hitch wagon steel wheel good cond For light horses or small draft. Lewistown 717-242-0941.

Registered Blue Heeler pups \$80 ea Reuben S Allgyer, Box 467, RD 2 Parksburg, PA 19365

Lancaster Farming, Saturday, March 16, 1991-C9

Two registered Haflinger geldings, seven year old, half brothers. Need experienced but gentle handler. \$4500 or best offer. 215-681-5097.

JD 830 pony start, good tin, motor needs work \$240. 515-594-4395.

Greenhouse metal framing 30x130 \$2500. if you dismantle \$2000. York Co. 717-938-2197 also key stoker.

1987 Grand Am LE 2.5 FI runs good, Int like new 2 door black 79,700 mi AM-FM cas. Pw. seat, Pw.W. Pd. DI. AC 4, 895. 215-267-0794.

Walker turner 1/2 HP drill press \$150. 2 ton chain hoist on rolling frame \$500. Make offer. Lanc. Co. 717-733-9723.

300 gal. fuel tank on skid \$75. 275 gal. oil tank \$50. sub. water pump \$50. Straw \$1 a bale. Franklin Co. 717-349-2192.

1954 Case DC eagle hitch, 3 bottom mounted plow, foot clutch original paint, factory emblem \$1500. 7' Ford mounted sickle bar mower \$450. Nords'h Cty. 717-649-5488.

MF 135 NH 770 harvester Badger 3 beater tandem axle wagon, Pittsburgh 2 row cultivator IH 40' elevator, Berks Co. 215-488-6491.

JD Model A with JD #8 mower V.G.C. \$1500. Bucks Co 215-249-3913.

Allis Chalmers fork lift 4,000 lbs, automatic with side shift, solid tires, 13' lift with mast \$2500 Bucks Co. 215-357-5996 after 6 p.m.

Schuylkill County John Deere 2010R tricycle front end parts or can be repaired \$400 Can be negotiable. 717-345-4609.

JD 60 WF economy tractor w/plow, Hann rototiller, Wheel Horse rototiller attachment 8x10 landscape trailer, Cub dirt plow, days 201-359-5206

Kubota B7100 DT four wheel drive 16 HP 3 cyl. diesel, Cat #1, 3 pt hitch + 3 spd. PTO, diff. lock, turf tires, kept indoors, perf. cond. \$4100. can deliver. Delco 215-358-5839.

3 registered angora billy goats, also 30 nannies, 9 mo. old & 20 nannies 2 1/2 to 3 1/2 yrs. Bradford Co. 717-673-8661.

Vermeer 605G baler A1 shape field ready, basket type rake, 730 Ford loader, Hampshire Co. W. Va. 304-496-8132

16 horse power Massey Ferguson riding mower, hydrostat drive with snowmobile attachment, good cond. \$800 OBO 215-445-4667.

500 wooden 1/2 bushel baskets .85 each. 300 wooden bent bottom bushels 1.00 each - 50 wood cantaloupe crates 1.00 each. Lanc Co. 717-285-4270.

Electric meat slicer, good working cond. \$65 Lanc Co 215-267-7049

Fox terrier pups, 8 wks. old March 16 \$15 ea. Used electric stove, 4 burner 25x40 works, \$10 Lanc Co. 215-267-6146

JD 43 corn sheller PTO on wheels \$350, Onan PTO generator on wheels w/ breaker & receptacles \$1000 Montg Co Laverne H. Detweiler, 791 Kulp Rd., Harleysville, Pa 19438.

New 8 ton wagons 86" track extend hitch 11Lx8 ply tires \$675 Lanc Co 717-354-0595

6 broiler auger pan poultry feeders, also some new parts 717-665-6326

POURED SOLID CONCRETE STORAGE SYSTEMS

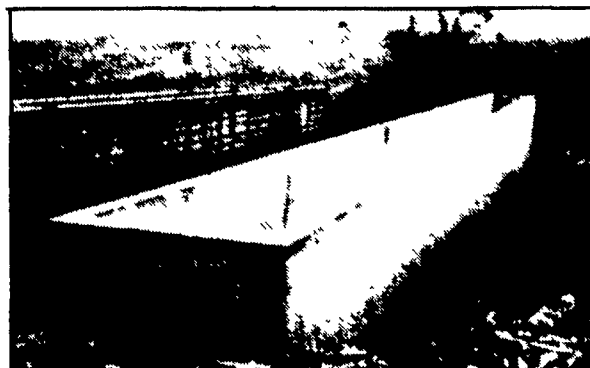
17 Years Experience In Pouring Concrete Manure Pits!



Above-Ground Liquid Manure Tank For Dairy Operation - 235,000 Gal.

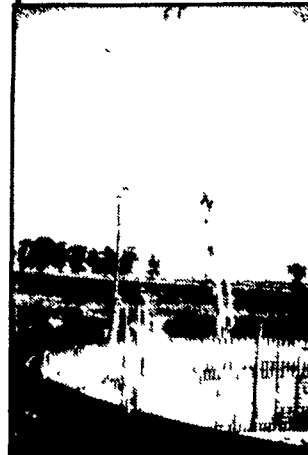


In-Ground Liquid Manure Tank For Hog Operation - 324,000 Gal.



Hog House-Liquid Manure Pit

Construction Of In-Ground Liquid Manure Tank- 425,000 Gallons.



CONCRETE PUMPING SERVICE AVAILABLE



Mixer And Boom Trucks



92' Boom Placing Concrete



Placing Concrete On Site

Take the questions out of your new construction. Call Balmer Bros. for quality engineered walls.

All sizes available round or rectangular

Invest in Quality - It will last a lifetime.

Balmer Bros.

CONCRETE WORK, INC.

243 Miller Road Akron, PA 17501

(717) 733-0353 6:30 AM - 3:30 PM

(717) 859-2074 After 6:00 PM