

Philadelphia Flower Show Heralds Endless Spring

LOU ANN GOOD

Lancaster Farming Staff

PHILADELPHIA (Philadelphia Co.) — Thousands jam the Civic Center to admire and savor the aroma of spring flowers and greenery from around the world. The annual Philadelphia Flower Show has attracted crowds since 1829, and this year, March 10 through 17, is no exception.

The largest indoor flower show in the world features a six-acre indoor floor plan that reveals the most stunning designs by more than 100 exhibitors.

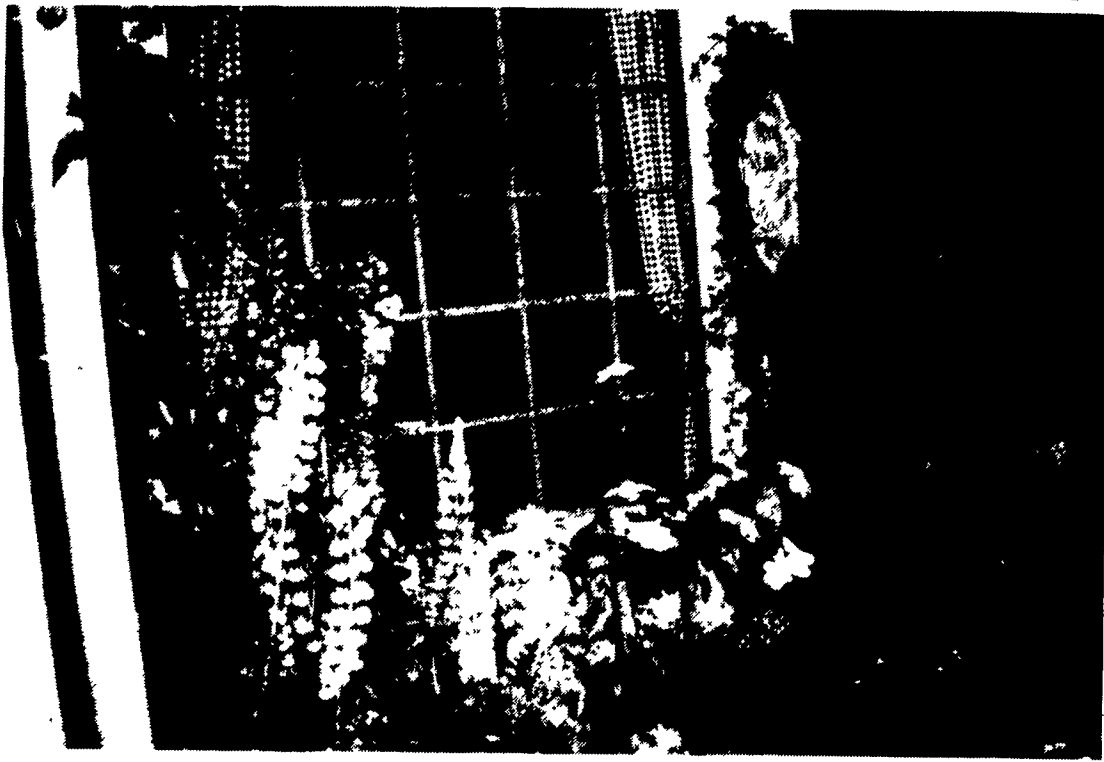
Full-scale exhibits show how to use greenery and flowers to enhance flagstone walks, gazebos, woodland settings, and city sidewalks. Winding canals lined with thousands of Holland tulips, tropical foliage and roses in every hue of the rainbow are planted among tall trees. Waterfalls surrounded by exotic flora from Africa and other continents show nature's beauty at her best.

More than 1,500 people showcased their talents in competitive classes ranging from balcony treatments and window boxes to table settings and miniature flower arrangements.

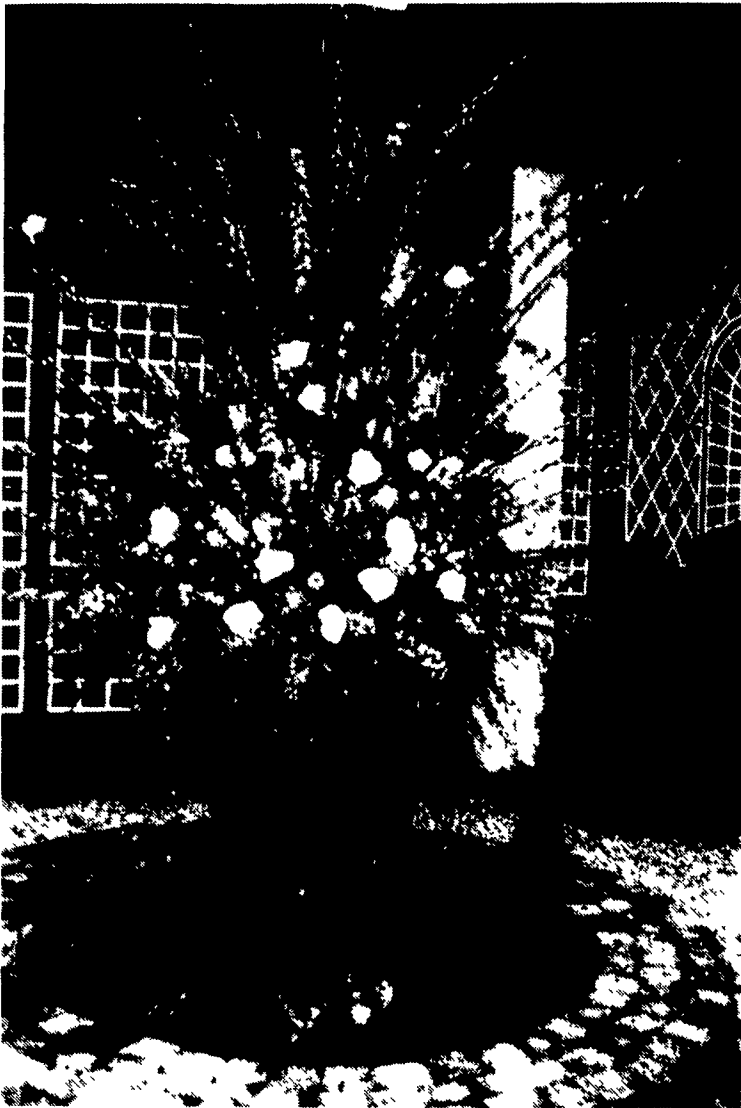
But the show doesn't focus strictly on beauty. Delaware Valley College, Soil Conservation Service, and other agencies show visitors how to help the environment by choosing plants that repel pests, designing with plants that use less water, fertilizers, and pesticides.

These exhibitors and other ecological landscape designers are committed to integrating the natural landscape with buildings. The designers are trained to work with natural processes of a site rather than against it.

Lectures and demonstrations are offered each day. Participants can learn Ikebano, Italian, Dutch and other types of flower arranging. Classes in flower photography, herbal vinegars, water gardening



More than 200 judges come at their own expense from as far away as England, Bermuda, and California to award more than 1,200 ribbons and plaques to competitive displays such as this one.



Some of the world's finest horticultural talents from nations around the world combined their designing talents with nature's beauty.

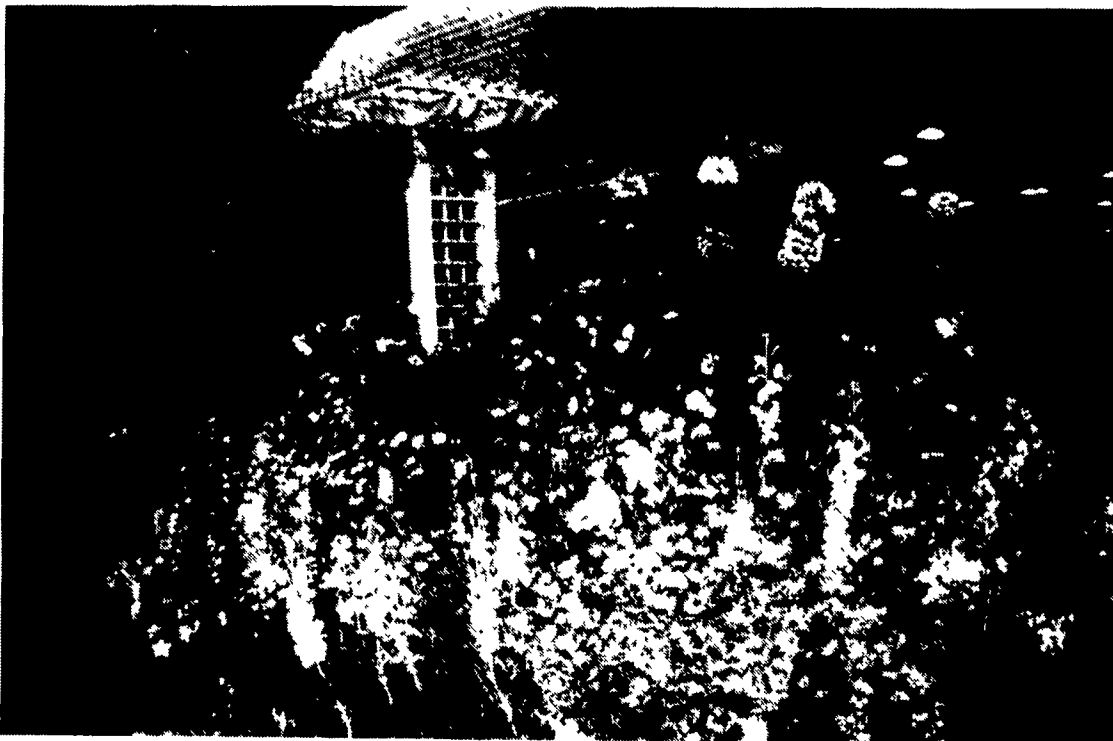


The fresh scent of spring-flowering bulbs permeated the Civic Center, annual site of the Philadelphia Flower Show.

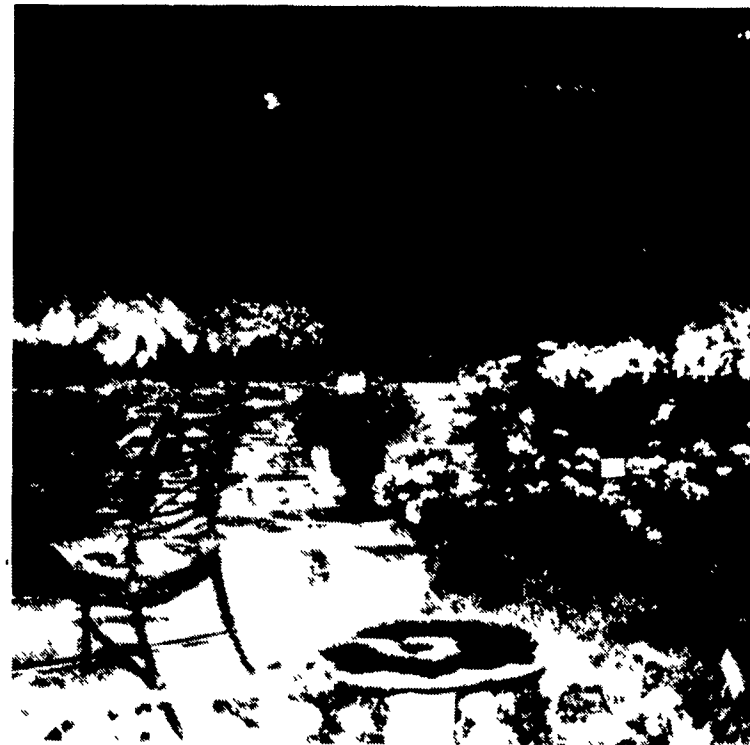
and similar topics are available.

Last year more than 225,000 attended the eight-day show. The show opens at 10 a.m. until 9:30 p.m. except Sunday, March 17, when it closes at 6 p.m.

Tickets are \$10.50 for adults and \$5.25 for children under 12. Proceeds from the show help fund the Pennsylvania Horticultural Society, which organizes community groups to green up their neighborhoods with trees, parks, gardens and windowboxes.



Paint your landscape with color by using wildflowers that multiply and come up every year.



The serene beauty of flowers surrounds this gazebo and flagstone patio.

Homestead Notes