

# State FFA Officers Tour Stops In Ephrata

**EVERETT NEWSWANGER**  
Managing Editor

EPHRATA (Lancaster Co.)—The State FFA officers visited the Lancaster Farming offices, art and camera departments and the press room last Friday while the latest issue was in production. And after the tour, they answered a few questions about how they saw the present and future of agriculture as it related to their experience.

On the question of how their peers view FFA, farming, and their involvement, many of the answers reflected a feeling that students outside the ag education system did not understand agriculture and therefore ridiculed the students and the system. But most of these FFA leaders did not seem to take personal offense.

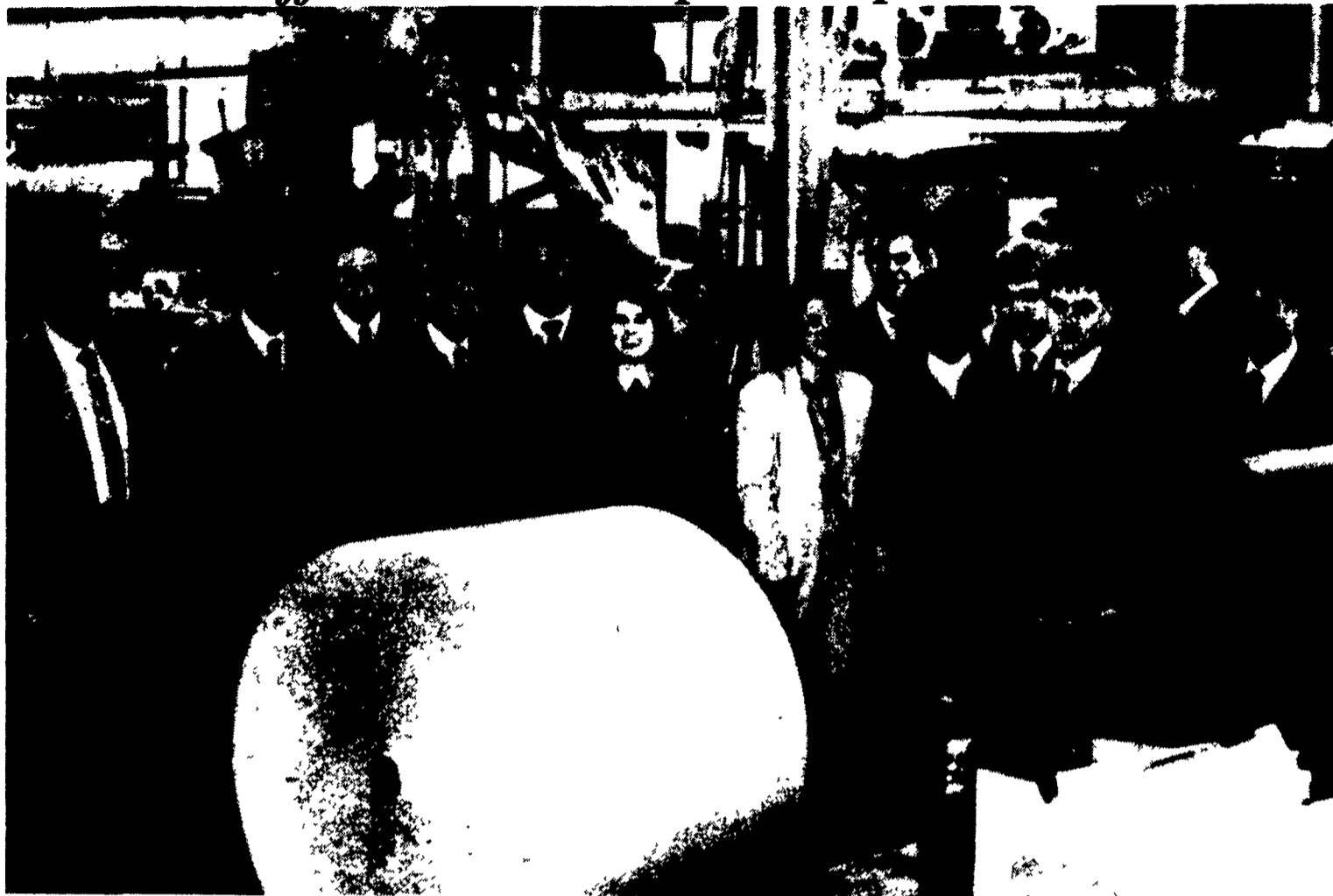
NEVIN HERSCH, western region vice president: "Many students look at FFA and ag education as the place where farmers are. They do not understand the benefits of FFA or the need for agriculture."

MATTHEW ZERBY, state reporter: "Because of the fact that they don't fully realize what the FFA is, many students ridicule the organization. However, FFA is the best program in today's school systems to teach leadership, public speaking and common sense."

LARRY FEESER, JR., state chaplain: "Pressures that are ag related are difficult to explain. They just have to relate with the problem head on."

JASON FRANKE, eastern region vice president: "I feel that there is a lot of pressure against youth

(Turn to Page A26)



The state FFA officers visited the Lancaster Farming offices and production facilities last Friday morning to see how the paper is printed. In the photo, the group sees the Goss Community Presses in operation. To print 49,000 copies for the subscription list, it takes about three and one-half hours and 30 tons of news print. Students are, left to right, Larry Feeser Jr. state chaplain; Matt Zerby, state reporter; John Rishel, state sentinel; Eric Marshall, state treasurer;

er; Jenny Brown, north central vice president; Greg Harnish, state vice president; Toni Gomez, state secretary; Nevin Hersch III, western vice president; Keith Hay, state president; Jason Franke, eastern vice president; Larry Smeltz, south central vice president. Sheila Reiner, Pennsylvania Association executive secretary, is in center; and Everett Newswanger, managing editor, is at far left.

## AG WEEK

March 17-23, 1991



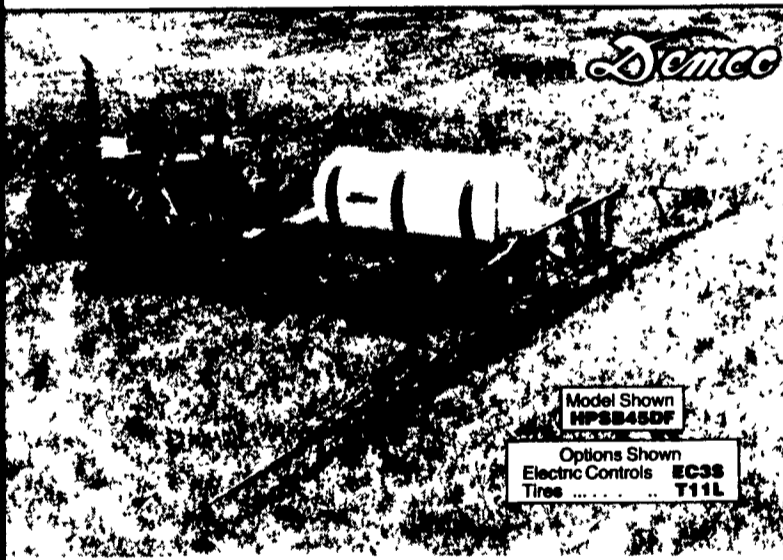
CHECKING DAIRY CATTLE

## FARMERS AgCREDIT CORP.

9 EAST MAIN STREET, LITITZ, PA  
717-626-4721



## 500 gallon SINGLE AXLE HPS SERIES SPRAYERS



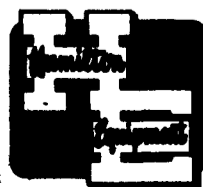
Model Shown  
HPSB45DF  
Options Shown  
Electric Controls EC38  
Tires T11L

### Dependable Sprayers

- ◆ 500 gallon elliptical polyethylene tank with baffle and deep sump for drainage.
- ◆ Jet agitation for thorough mixing and excellent chemical suspension.
- ◆ Large 16" fillwell with 4" center cap.
- ◆ Adjustable wheel spacings of 60", 70", or 80" centers. (120" optional)
- ◆ Single axle trailer with ground clearance settings of 23" or 29", three ton hubs and spindles and 15" x 10" wheels.
- ◆ Large front mounted step, platform, and safety rail for easy filling.
- ◆ Three section boom control.
- ◆ 2½ gal. clean water tank for safety.
- ◆ Available with 28', 30', 40', or 45' heavy duty truss booms with boom skids, ¾" boom plumbing, and diaphragm check nozzles. DBFT Flotation boom mount is standard on truss booms.
- ◆ Available with 60' or 80' wheeled booms with ¾" boom plumbing, diaphragm check nozzles, and 4.80 x 12" boom carrier wheels with built in suspension.
- Pump Packages**
- ◆ Demco single or double piston pump with electric shut-off.
- ◆ Hypro belt driven centrifugal pump.
- ◆ Hypro gear driven centrifugal pump.
- ◆ Ace hydraulic driven centrifugal pump.

### NOW AVAILABLE WITH HYDRAULIC FOLDING BOOMS!

For The Name Of Your Local Servicing Dealer, Contact



## HAMILTON EQUIPMENT, INC.

567 S. Reading Road Ephrata, PA 17522  
(717) 733-7951

## Jacques Scoreboard

### 5700

A fast start in spring training plus an ability to perform under widely varying conditions have helped make this veteran a perennial all-pro selection. Long, slender, deep-kerneled ears turn out big yields of high test weight grain.

### 7910

The scouting report says this rookie has big-league yield capability, excellent seedling vigor and very good staygreen. Excels in drydown and test weight. Sign up this newcomer early.

### 4170

This pro takes charge on the field. An all-around performer, 4170 features fast growth, superior stalk and root strength, and outstanding stress tolerance plus exceptional yield potential.

See or Call: **Your Dealer**  
**Or 1-800-472-3010**

