

1a CONSTRUCTION EQUIPMENT

125C 1H Loader, Good condition \$10,000.00 Call 215-929-3777 Evenings please!

1984 Eager Beaver Trailer, 9 ton DOW, \$2,600 (215)723-7249.

1986 Case 855D Loader 1400 Hrs 4-in-1 Bucket like new condition \$33,000. 717-436-6137.

1989 JD 624E wheel loader, 3/4 cy. bucket, JRB Quick Tach, 23 5x25 Rock tires 80%, EROPS, 3,200 hours, excellent maintenance \$71,500. (717)828-2544

1989 Powerscreen Chief screening plant, w/3 folding stackers/conveyors 400 ton/HR capacity, Ford diesel like new \$85,000. 717-828-2544.

85 Beaver Wood Eater firewood process, 1 cord per hour. Fully operational chain conveyor \$14,500 201-948-6296

931 Cat 4in1 bucket, good condition, \$11,000 (717)738-1742

BACKHOE JD 410, 1977, rebuilt engine, 2 buckets, \$6,500 301-833-9091

CAT 416 loader backhoe w/cab, low hours, 1987, super condition, \$18,750. (215)944-0773.

CAT 910 Wheel Loader, \$9,500 301-833-9091

CAT 951 B crawler/loader, good condition, \$12,200 (717)859-3283.

Crawler dozer International 500 diesel, 6way blade, shuttle transmission, new U/C, new paint seat etc., 3055 hours \$6750. 301-392-9751 Eves.

DISMANTLING FOR PARTS: Heavy construction equipment, most makes and models, parts locator system available. Balanda Equipment Co Palm, PA 18070 1-800-322-8030

Dynaho 190B Series 3, 1983 Loader Backhoe w/ cab, excellent cond., \$11,000. 301/398-5054 after 6PM.

Ford 4500 backhoe, 15' boom 1 yard bucket. Ready to work \$15,000 201-852-4699

Dozer JD-550 6-way blade, 1979, excellent condition, \$13,000 215/932-4263 or 301/398 5054 after 6PM

Dump truck 14/2 Ford tandem 50,000 miles on new CAT diesel, new clutch and radiator, rears and transmission recently rebuilt, many spare parts, VG condition, \$9,500. Schuylkill County (717)739-2701

Fork Lift, rough terrain 5 ton AC, 12' lift, new tires, engine rebuilt, \$5500 717 225 3798 717-873-3928

IH 260 A series loader/backhoe, 18' reach, good condition, \$6,200 Can see operate 717/442-9559

Lancaster Farming, Saturday, March 16, 1991-E45

JD 300 B backhoe \$5,500 8' utility body, \$150 (215)856-7740


MF Backhoe Loader, Model M50A w/R O P S Cab, \$6,800 JD Model 310 A, 4 cyl diesel, full cab w/R O P S, very good condition, \$10,500 Day or Night 717/347-3669

NH 445 dsl skid steer, runs well, \$4,500 301-833-9091

Skid Loader Hydra-Mac 20C, runs good, 58 hp diesel, 2,300 lb operating capacity, 4600 tipup capacity, 1983 \$10,800 717-627-2499

3 SILOS AND UNLOADERS

Dismantle & Re-erect Preowned Structures
Preowned Harvestore® Units In Stock
Rebuilt Goliath® & Hercules Unloaders
Leasing & Trade-Ins



GLASSLINED STRUCTURE ENTERPRISE

2169 Main Street
 Rothsville, PA 17543
 717-626-0032
 or 717-626-0036

Please Give Us A Look Available This Spring

1 - 20x90	2 - 20x50
4 - 25x85	1 - 20x40
3 - 20x70	4 - 20x30
3 - 20x60	

Let's Talk Silo

3 SILOS AND UNLOADERS

Poly Dome Bulk Bins
 Designed to Handle High Moisture Corn & Soybean



High density polyethylene, clean, smooth and attractive translucent to see material line. No corrosion, rust or flaking, always slickery. Designed for fast smooth flow of high moisture material.

Poly DOME

Check Our Prices Before You Buy!

• Silo Hoppers And Foot Baths Also Available

MODELS AVAILABLE
 • 1.8 Tons • 2.8 Tons • 6.5 Tons

GRO-MOR PLANT FOOD CO.
 281 Farmland Rd, Leola, Pa. 17540
1-800-322-0060

WENGLERS INC.
 251 SOUTH RACE STREET, MYERSTOWN, PA. 17067
 PH: 717-866-2130 FAX 717-866-4300

HOURS:
 MON-FRI 7:30 To 5:00
 SAT 7:30 To NOON

NIGHTS:
PHONE:
 717-866-7147
 OR
 717-273-9089

(13) DOZERS

MF 200.....\$3900
 (2) IH 500 Diesel 6-Way.... \$3500-\$6900
 (2) JD 440\$4950 to \$5900
 Case 350.....\$8500
 Cat D4D.....\$9500
 Case 450.....\$11,500
 Cat D3.....\$13,900
 Case 450B-6 Way\$17,500
 JD 450D-6 Way..\$24,500
 Cat D5B.....\$29,500
 IH TD 25C w/Ripper.....\$49,500

(15) TRAILERS

1978 6 Ton Tag-A-Long.....\$1400
 Hudson 6 Ton Tag-A-Long.....\$1700
 1989 2 Axle 5 Ton.....\$1795
 2 Axle Dump-On Road.....\$2500
 1972 Fruehauf 43' Flat.....\$3000
 1984 Eager Beaver 11 Ton.....\$3900
 New 11 Ton Tag.....\$6900
 New 25 Ton Tag w/Air.....\$8900

(4) TRACTORS WITH LOADERS

Ferguson 20.....\$2500
 Case 480CK.....\$4900
 Ford 335.....\$8500
 IH 260A.....\$8500

(14) CRAWLER LOADERS

JD 350.....\$5500
 JD 450.....\$8900
 Case 450.....\$9900
 IH 175B.....\$10,000
 IH 125C.....\$12,900
 Cat 931-Cab.....\$12,900
 JD 450C.....\$12,900
 JD 555.....\$17,500
 Case 850B.....\$18,500
 Cat 955L.....\$19,500
 Case 455C.....\$26,500
 Case 855C.....\$26,500
 Cat 977L-Ripper.....\$33,500
 Cat 983 w/Cab.....\$37,500

(6) FORKLIFTS

Hyster 6000 Lb.....\$3900
 White 40 LP.....\$5900
 Clark 8000 lb. Gas.....\$11,500
 Chicken Hawk.....\$13,500
 Komatsu FG40 1980 8000 Lb. & Triple Mast.....\$13,500
 Case 586C.....\$18,500

(5) RUBBER TIRED LOADERS

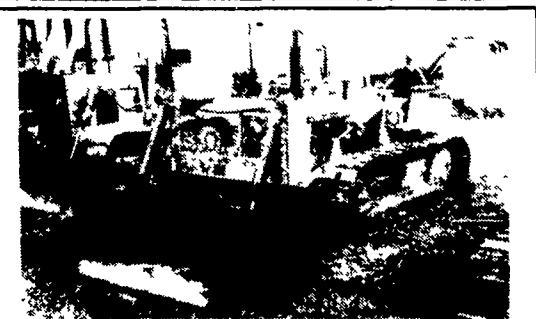
Cat 922B.....\$8,500
 Clark 45C.....\$18,500
 Ford A64.....\$18,500
 JD 544B.....Call
 Ford A66.....Call

(13) BACKHOES

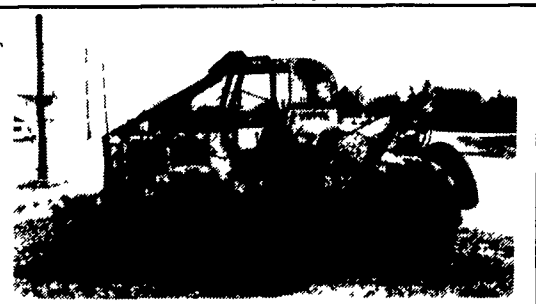
(6) Rigid Hoe Attachments.....\$2500 & Up
 (6) 3 Pt. Hoe Attachments.....\$2500 & Up
 Case 530CK.....\$3500
 MF 300 Gas.....\$3500
 IH 3500.....\$4800
 Case 680.....\$4800
 Case 480CK.....\$6900
 IH 2504-Gas.....\$6900
 Case 580CK.....\$7500
 IH 3600 Ext.....\$9500
 IH 260A.....\$11,500
 JD 410 Cab.....\$11,500
 Case 680G.....\$13,500
 Case 580D.....\$15,500
 Case 580 Super E.....\$18,500

(8) TRUCKS & CARS

1985 Honda Accord 4 Door.....\$3990
 (2) 1955 & 1960 Chevy Pickups.....\$2750 & \$4990
 1984 Honda Prelude.....\$4990
 1986 Jeep Cherokee 4x4.....\$6900
 1985 Ford E350 Mini Bus.....\$9900
 1970 GMC Astro w/24' Rollback.....\$12,500
 1987 Bulck Gran National.....\$16,900



International 500 Diesel Dozer/Loader 6 Way Blade, Like New Loader Bucket, Power Take Off, Runs Good.
Only \$7,900
Reduced \$6,900



1977 Clark Ranger 664B Log Skidder, 3 Cylinder GM Diesel, Good Winch, Runs Good.
Only \$9,500

(2) SKID STEER LOADERS
 Clark 533-Diesel....\$4900 Case 1845.....\$8900

MISC. CONSTRUCTION

(100+) Used Hoe Buckets..Come Look
 (75) Loader Buckets..Come Look
 (75) Set Forklift Forks.....Come Look
 Ford 4500 Frost Tooth.....\$395
 3 Pt. Hitch For Case 580.....\$695
 JD 640B Log Skidder Blade..\$1000
 Root Rake 7'.....\$1400
 Ripper.....\$1500
 (3) Tree Planters.... \$350-\$650
 (2) Tree Shearer. \$1500-\$3500
 1 Ton Roller.....\$2000
 Giant Leaf Vacuum's..... 2 For \$2000
 Sheepsfoot Roller..\$3900
 Schramm 160 Air Comp.....\$3900
 Snowblower For Big Loader.....\$3900
 (2) Sweepers.....\$600 to \$2900
 1-2 Ton Vibratory Roller.....\$4900
 Huber Maintainer..\$4900
 Sheepsfoot Roller..\$4900
 AC D Grader.....\$4900
 Jeagar 175 Diesel Compressor.....\$4900
 Construction Ramp.....\$7500
 JD 760 Scraper..\$13,700
 American Lincoln Sweeper.....\$15,000

NEW EQUIPMENT

Boom Poles.....\$125
 King Kutter Scraper Blades 6', 7' And 8'..... \$225-\$995
 Seeders- Broadcasters- 3 Pt.....\$395
 King Kutter Stone Rakes 4', 5', 6', 7' & 8'..... \$395-\$595
 King Kutter Post Hole Diggers 6", 9" And 12" Augers.....\$495
 King Kutter Discs 5 1/2' And 6 1/2' - 3 Pt..... \$495-\$595
 King Kutter Grading Boxes 4', 5', 6', 7' & 8'. \$495-\$595
 King Kutter Rotary Mowers 4', 5' And 6' 3 Pt. And Pull Type..\$595 & Up
 Aerator 5'- 3 Pt.....\$695
 King Kutter Finish Mowers 4', 5', 6' & 7'- 3 Pt..... \$995-\$1295
 Long Rototillers 55", 63", & 71"..... \$1495-\$1995

(7) LOG SKIDDERS
 Tree Farmer.....\$2900
 Pettibone PT 18....\$3900
 Tree Farmer C5D..\$4900
 Clark Ranger 664B.....\$9500
 Clark Ranger 666B.....\$9500
 (2) JD 540B w/ Grapple.....\$12,500/\$14,500

HUNDREDS OF CRAWLERS & BACKHOES FOR SALVAGE

EXCELLENT SELECTION OF AFFORDABLE USED EQUIPMENT