

Madey Farms

814-467-8839
814-467-7085

- Combine Tracks (new) \$5,000
- White 4-150, 3 pt. PTO \$10,900
- White 2-150, Solid \$7,500
- AC 7580, 24x30 Tires \$15,500
- IH 1586 4 post, dual PTO \$9,600
- IH 1566, 1976 model \$7,900
- IH 1466 cab/air, '76 model, sharp.. \$8,500
- Case 970 Diesel, Nice \$6,600
- Case 1030 diesel \$4,600
- JD 4620 w/cab \$7,800
- MF 165 diesel w/mtd. picker .. \$4,200

Self Centering Row Guides
For IH Corn Binders
With Manual Override
Place Your Order Now

Also 12 Volt Timers, Timers Can
Be Adapted To Air and
Hyd. Applicators

Dist. for
B&J Mineral Co.
Dealers Wanted For
Horse and Dairy Mineral
Red Hill Repair Shop
590 Red Hill Rd.
Narvon, PA 17555
Call (717) 768-3652
Mon. or Wed. 8:00-8:15 AM

**OXFORD HILLS GETTY
DISCOUNT TIRES**

Route #31 Oxford, N.J.
(908) 453-3223 - 453-3202

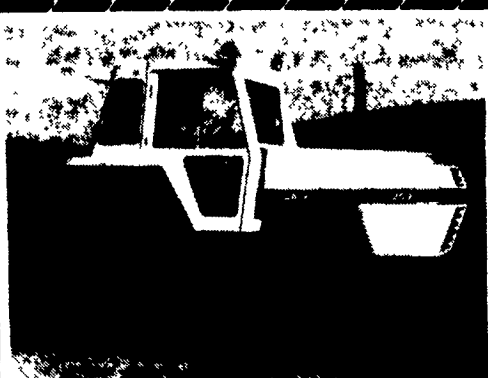


- 11.2x28, 4 Ply \$130
- 13.6x38, 6 Ply \$218
- 15.5x38, 6 Ply \$245
- 18.4x34, 6 Ply \$310
- 18.4x34, 8 Ply \$355
- 18.4x38, 6 Ply \$358
- 18.4x38, 8 Ply \$399
- 20.8x38, 8 Ply \$530
- RADIAL STAR
- 18.4R34, 1 \$440
- 18.4R38, 1 \$485
- 18.4R42, 2 \$570
- 20.8R38, 1 \$670
- 20.8R38, 2 \$740

Priced Good Thru March

SPECIAL

31x10.50R15 Gen 6 Ply Blk. \$70.00
Compare Our Prices



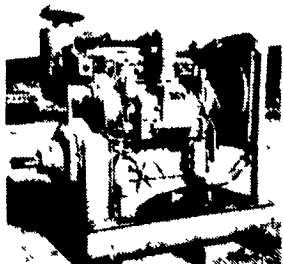
CASE 2590
CAH 20.8x38 Duals,
Runs Exc.
\$9,500
301-833-9091

Kelly Ryan Big Bagger



NEW ADVANCED HI-RISE BAGGER
8', 9' - 2 Wheel,
Self cleaning
UP NORTH SILAGE BAGS
CUSTOM BAGGING
AG PRODUCTS CO., INC.
717/328-3177

Diesel Engines & Power Units

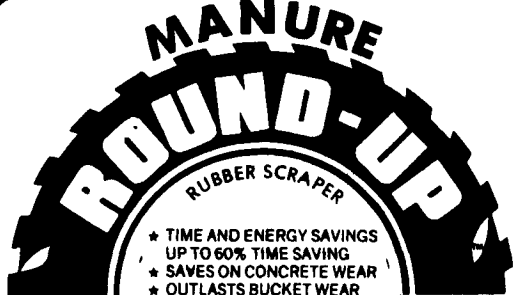


Detroit Diesel Cummins
53-71-92-8.2 A-B-C Series
48 - 500 HP 41 - 250 HP

Industrial - Agricultural - Automotive
Twin Disc & Rockford Clutches
KC Replacement Parts & Injectors

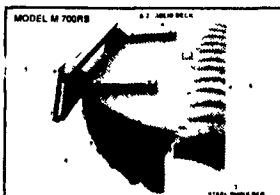
Diesel Engine Service

13 Pleasant Valley Rd.
Ephrata, PA 17522
717-733-3890



- * TIME AND ENERGY SAVINGS UP TO 60% TIME SAVING
- * SAVES ON CONCRETE WEAR
- * OUTLASTS BUCKET WEAR

- * MADE FROM HEAVY INDUSTRIAL EARTH MOVER TIRES
- * THREE DIFFERENT HOOK UPS BUCKET THREE POINT BOBCAT
- * ACID RESISTING PAINT
- * WIDTHS FROM 6 to 8 1/2 FEET
- * Larger Widths Special Order



QUICK TACH SCRAPER



3 POINT SCRAPER



BUCKET

SALES INQUIRIES:

ROBERT H. ROHRER & SONS
123 Charlestown Rd.
Washington Boro, PA 17582
717-684-6500

For Sale

**500 Gal. Tandem Axle
Zimmerman Sprayer**
45' hydraulic fold boom, John Blue
Twin Piston ground drive pump,
PTO agitation, ag chem 10 gal.
foam marker, Ag Chem acre meter.
Simple to Operate
\$6,200 OBO
717/867-5616

**Vermeer V450 Trencher with Backhoe
and Backfill Blade**

**Ditch Witch 2310 Trencher with
Backhoe and Backfill Blade
Includes Trailer.**

Several 10' Moritz Horse Trailers.
Racks for construction use. Many
features

1978 1750 IHC Loadstar DT466 5x2
Transmission, Stake Body Dump
Ford 4000 Loader Tractor 3 cyl. Diesel
Other Misc. Tractors, Trucks &
Pickups

Call Bill 717/545-4235

TRACTORS

- John Deere 1650, 4 Wheel Drive,
1100 Hours \$14,000
- Oliver 550 With Loader \$4,250
- MF 30 Gas \$2,800
- MF 35 Gas \$3,500
- MF 20 Gas \$1,800
- MF 135 Diesel \$3,500
- MF 65 Gas \$3,500
- Oliver 550 Gas \$2,800

All in like new or rebuilt condition

**RINGO HILL FARMS
EQUIPMENT CO., INC.**

1624 Rt. 212, Pleasant Valley
Quakertown, PA 18951

215/346-7340
215/346-8041 FAX

BALDOR

**Farm
Duty Motors
1/3 To 10 H.P.**

We Have Motors For All Your Farm Needs

- Conveyors
- Silo Unloading
- Irrigation
- Auger Drives
- Vacuum Pumps
- Aeration
- Grain Stirring
- Fans

Jet Pump, Heating And Air Conditioning Motors

We Service What We Sell
Competitive Prices
FOB Lancaster, PA

**RAM MOTORS
& CONTROLS**

70 Pitney Rd., Lancaster, PA 17603
717/392-2128

Ask For Glenn
Welder Repairs - Electric Motor Repairs

Call Lapp's Barn Equipment For
All Your Barn Equipment Needs

• **ACME**
Ventilation
Systems

• **N-TECH**
Manure Systems

• **LANCASTER
Level-Flo**

• **Dynavent**

• **Ritchie**

• **OSWALT**
by J-STAR

• **Zimmerman**

• **WEAVERLINE**
Feed Carts

• **ZIMMERMAN**
MFG.
CORP.

• **J-STAR** Scale
Systems

YOU WON'T BEAT OUR PRICES & SERVICE



**LAPP'S
BARN EQUIPMENT**
5935 OLD PHILADELPHIA PIKE, GAP, PA 17527
PHONE: 717-442-8134
— Radio Dispatched Trucks —

NH #8 forage wagon w/roof
\$2000, AC 8 ton running
gear \$500 215-286 6388
Chester Co

NH baler 282 with kucker
\$500, post hole digger
\$200 215-287-9043 after
5PM

NH skid 1989 low hours,
model 785, clean, \$14,500
301-848-6487

NI 213 PTO manure
spreader, 3 beater, 150
bushel, \$1,000
301/898-7426

NI 486 round baler, like
new, 300 bale made with it
814-684-1204

NI front end loader #504
Call after 6 PM
717-865-7069

No-Till Planter, 6 row,
White 5100 w/Yetter Coul-
ters, dry, good condition,
\$5,000 215/255-4239

OLIVER 550 w/#588
loader, gas, PS, ind, 1,400
hrs Must See \$4,500
301-833-9091

Old Farm and Construction
Toys, Trucks, Literature,
Signs, Pedal Tractors, Ad-
vertising Memorabilia, etc
for sale \$5 00 for 50 page
list Shown by appoint-
ment | Buy-Sell-Trade
Lloyd J Wenger, 831A Hill-
top Rd, Myerstown, PA
17067 717/866-7147
evenings

Oliver 1900 standard, GM
diesel, 3 point, PTO hy-
draulics \$3500
717-866-7066

Oliver 440, good condition
717-866-7066

Oliver HG Crawler, \$800,
Case SC, \$350, Ford NAA
power unit, \$1,350 Saxon
burg, PA 412/352-1081

OMC 545 Mustang skid-
loader w/brand new 50
HP Cummins Diesel en-
gine, MF 2200 tractor w/
loader, OMC 95 Bu grin-
der mixer Farmer owned
717-374-1959

Ontario Gran Drill on steel,
needs work, \$50 Lanc Co
717/898-8370

PARTS PRICED RIGHT
CRAWLER TRACTOR
PARTS

CURRENTLY
DISMANTLING
AC, Cat, IHC, JD, Case,
Michigan, Hough, Gallon
and others Loaders, doz-
ers, graders, excavators,
backhoes Many parts re-
moved & checked, ship
anywhere.

NATIONWIDE PARTS
LOCATER SERVICE
NEW

ARRIVALS FOR
DISMANTLING

JD 860A Scraper, Michi-
gan 600 Skider, Cat 920,
Case 850 And more--
inventory changes weekly
BALANDA EQUIPMENT
PO Box 407

Route 29
Palm, PA 18070
1-800-322-8030

Patz 477 Lagoon pump
Two years old. Excellent
condition. \$6,900 or take
over lease for two more
years Also a J D ten foot
disk Good condition \$400
717-966-2019

Patz Gutter Cleaner for 50
cow barn, used 2 years
301/253-4521

Pequea feeder wagon,
model 520, used 6 months
(717)222-9020.

Perkins 354 6 cylinder,
85HP, diesel engine w/
clutch, \$2,200 Worthing-
ton 20HP air compressor,
\$800 Both good condition
Elam L Fisher, RD #2, Box
156-A, Cambridge Rd.,
Honey Brook, PA
(215)273-2076

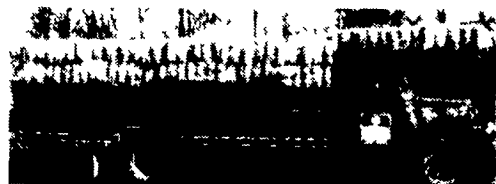
Plow 4x18, hydrau, .e-
set, semi mounted, JD
2500, on-land hitch
\$ 2, 2 0 0 / offer
301/898-7426

Planter, AC 9 row beans or
6 row corn, with monitor
301/771-0071

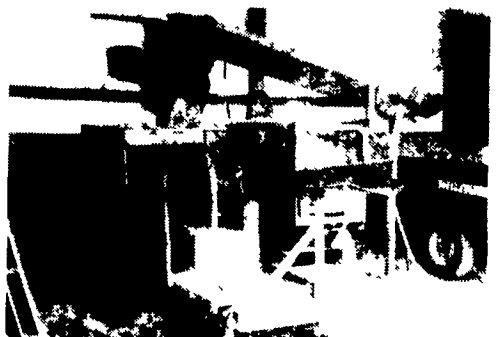
Riteway Model 37 Coal
Stove, new condition
717/426-3135



1988 ReInco HG-15 Hydro Seeder
Mounted On 1979 IH Tandem Diesel
Ex. Condition
\$36,000



1973 IH 18' Flatbed
Straw Truck \$3,400



1976 ReInco M80C
Strawblower \$7,400

Leonberg Nursery
Days 609-234-7590
Eves. 609-234-3792