

UNION COUNTY

34.5 A has 20A tillable, 14A wooded with stream, house, 2 pole buildings. Private location features energy efficient, 10 yr. old home with 3 or 4 BR, 2 1/2 bath, LR, DR, country kitchen, enclosed breezeway, garage. Many extras include Quaker Maid cabinets, oak floors, central vac, woodstove, fireplace in master bedroom, etc. Large windows offer nice view of fields, woods and mountains. Adjoining 70 A. also available.

34A & buildings: \$189,000
104A & buildings: \$325,000
Contact owner at
(717) 966-2678

Farm For Sale

200 Acre, 110 acres tillable, 3 ponds, buildings located in center of property, large 2-story newly sided house, fully equipped, 53 tie stall barn w/pipeline milker one 16x40 silo, 3 tool sheds. Farm located in southern Lewis County, NY, w/ beautiful view of the Black River Valley. Must Sell!
(315) 397-2532

TIOGA COUNTY

64 acres open and wooded land, excellent hunting area, nice views, close to Wellsboro, \$800 per surveyed acre #1099



9 Cone Street
Wellsboro, PA 16901
717-724-3500

EASTERN LYCOMING COUNTY

18 1/2 acres level land with early 1800's brick home and barn on busy intersection. 1/2 mi. off Rt. 180. Just rezoned to "Highway Commercial". Unlimited possibilities
717/546-3498

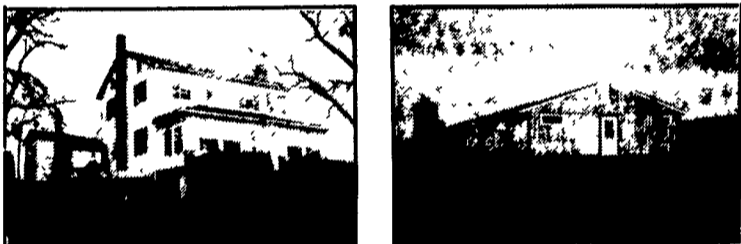
BETHEL TOWNSHIP...

300 PLUS ACRES... Very large tract of land just inside Berks County. Borders on Route 501 and is just south of Route 78.

RICH BRANDT FARM REAL ESTATE

2033 Penn Avenue, West Lawn
Reading, PA 19609
(717) 274-3622 - office - (215) 678-1122

NORTHUMBERLAND FARROW/FEEDER PIG OPERATION 56.9 ACRES



200 Sow capacity, 4060 feeders sold in 1990. Farrowing house & nursery 7 yrs. old. Farrowing house 26'x128', nursery 32'x68', gestation barn 80'x72'. 5 yr. assumable contract, includes sow herd.

Photos above show farrowing & nursery facilities; 2 sty. alum. sided fr. house with living room, lg. kit., FR w/FP & insert for wood or coal, 3 BR's & 2 baths, oil hot water heat.

This farm has many possibilities with over 3000' road frontage along black top road. All buildings in good condition. Priced to sell at \$275,000.

Because of disease control all showings must go through

HORNING FARM AGENCY, INC.
Call for appointment 215-286-5183

THE REAL ESTATERS OF MANSFIELD

1671 S. Main St., Mansfield, PA 16933
(717) 662-2138 Evening - (717) 659-5514

DAIRY OR HOBBY FARM

Just minutes to Mansfield & University. 124.84 acres w/2 barns, stream, farm pond & mix of tillable, pasture & woods. 2 story 4 bdrm., 1 1/2 bath home nicely remodeled w/detached 1 car garage. Excellent buy at newly reduced price of \$127,900 M-801.

BORDERS STATE FOREST

478.19 acres south of Wellsboro, PA. Mix of woods and reclaimed areas planted to pine trees. Access from multiple roads. Just minutes to Pine Creek and Grand Canyon. Negotiable owner terms at \$237,000 (\$495 p/ac) or \$213,300 cash (\$445 p/ac). Smaller parcels and info. package w/map available. Example -40.98 acres bordering State \$29,900 terms or \$26,900 cash. M-INT.

The Prudential

Stewart Real Estate
47 West Pomfret Street
Carlisle, PA 17013
(717) 245-9393

An Independently Owned and Operated
Member of the Prudential Real Estate
Affiliates, Inc.

Well maintained picturesque farm located in Cumberland County. 590 contiguous acres. Highly productive soils contoured and stripped, 5 acre lake, dairy barn, 52'x52' Morton building and modern 3 bedroom limestone house. Call Mark Bucher (717) 776-3073.

Samil 47 acre farm with 4 bedroom house and bank barn. Excellent hunting and state park nearby.

Beautifully decorated 4 bedroom farmhouse screened by nature. 38 acres, out buildings and close to Carlisle. Call Linda O'Hanlan (717) 258-5653.

The Prudential, You Know Us, We Know Real Estate

WIMPLE ASSOCIATES

150 BUSHEL/ACRE CORN LAND: 386 acre flat land farm with 240+ tillable. Real nice barn; 93 tie stalls, 2" pipeline, 4 large silos, outside feed bunk. 40x80 steel machine shed. Stately 5 bedroom home under big shade trees. Long growing season; prime farm country. Owner bought other farm...asking only \$219,000.

3 ACRE FISHING POND on this 155 acre farm being offered by lifetime owner. 20 acres good woods; balance open and mostly tillable. Level, elevated land. Very good 48 tie stall barn, 2' Universal pipeline, cleaner, 16x50 unloading silo, 200 ton trench. Very handy barn for chores with many stalls in addition for young stock. Exceptional 9 room home. 2 tractors and full line of machinery included for \$155,000. Near Pa. border.

630 ACRE FREE STALL FARM: 300 acres open, 150 pasture. Rolling land with 4 miles road frontage. Well-maintained 100 cow free stall barn with bunk in center, double 5 parlor, 5 large silos, 40x110 heifer barn with ell. Several other barns & shops. Nice 3 bedroom home with view. Cattle & equipment available. \$400,000.

MORT WIMPLE ASSOCIATES
SLOANVILLE, N.Y.
518-875-6355
FAX: 875-6749
FREE FARM CATALOGUES

DAIRY FARMERS DREAM

260 Ac, Kent Co. Md. 229 Til., 80 Ac. Alf., Double 6 Parlor, Freestalls & Headlocks Bunker Silos, Harvestore. 2 Fine Homes. All Bldgs. NEW in 1988. Capacity for 180 Milking Cows. Price: \$1,290,000.

Call: Ed Fry
Cooper-Barroll Realty, Inc.
Day 301-778-2372
Evening 301-778-1539

DAIRY FARM

Near Oxford. 185 Acres. Large loose housing with double 6 Herringbone Parlor, 5 silos and slurrystore. 2 barns for young stock. Comfortable ranch style home plus mobile home on property. Also available is an exceptional 2 story dwelling for only \$199,000. Very productive Chester County farm. REDUCED TO \$1,800,000. Call 717-464-4700.

EXTRAORDINARY DAIRY FARM

in Southern Lancaster County. 175 acres of level chester loam soil. 135 acres tillable, 35 acres pasture with stream, nice 5 acre wooded lot. Large stone stucco house remodeled throughout, 3 Harvestore silos, 1 cement silo, Implement shed, hog pen heifer barn. A must see property for \$6,000 per acre. Call 717-464-4700.

SOUTHERN LANCASTER COUNTY: 62 acres farmland. 55 tillable, no buildings. Very productive land. Priced at \$360,000. Call 717-464-4700.



AMERICAN HERITAGE

OPEN HOUSE SUNDAY 1-4 P.M. TREXLER MT. RD., MILLCREEK TWP. LEBANON CTY.



TOTALLY REMODELED farm house features 4 bedrooms, 3 baths, modern kitchen with appliances, sun room overlooking pond and pasture, all situated on 15.79 acres, large stone barn, (40x80), 2 car detached garage with workshop. Interior has pine floors and oak wood trim. Stop in today!

DIRECTIONS: From Reading: Rt. 422 West to left on Sportsman Rd. (at state hospital), right on Texter Mt. Rd., right on Trexler Mt. Rd. property on left.

From Lancaster Cty.: Rt. 897 North thru Reinholds to Blainsport, right on Texter Mt. Rd., bear left at "Y" (Trexler Mt. Rd.) towards Newmantown, property on left approx. 3 1/2 miles from Rt. 897.

REALTOR ASSOCIATES: Michael Gordon and Bruce Bobiner.

ERA HOP USNER & ASSOC.
722 W. Main St., Ephrata
717/738-2005 or 717/627-1230
or 215/484-0602

LANCASTER COUNTY
(Close to Chester Co. Line)

120 Acre Dairy Farm - choice soils - topography suitable for many uses. 56 comfort stalls, 19 free stalls. New 1500 gallon milk tank. 4 silos, manure lagoon, new heifer barn, 2 1/2 story stone house w/ modern facilities, 4 bedrooms, 2 baths, attached garage, etc.

MAHLON OBERHOLTZER AGENCY
Your Central PA Farm Broker
Smoketown, PA 17576 (Lanc. Co.)
717-392-1177

