

'87 Dodge D250 HD, 1/2 ton 4x4, 360, auto., PB, PS, AM-FM, Michelin radials, 8,510 GVW, 25,000 miles, excellent condition, \$8,975 717-733-2873

'87 Chevy Scottsdale C20 Suburban, 8 passenger, 454 auto, PB, PS, air, towing package, 44,000 miles, excellent condition, \$9,950 717-733-2873



1986 Chevy Scottsdale
 3/4 Ton Pickup, V8, AT, PB, PS, Two Tanks, 47,000 Miles, Very Good Condition, Two-Bone Blue & White Finish
 Asking \$5,500
Call Days 717-865-4675
Evenings 717-865-2079

1968 Ford Flatbed Truck \$1,800
1974 8 ton Int. Dump Truck w/snow plow, \$2,800. Will separate
23' Long Equipment Trailer
6' Matthews MC 3 pt. Hookup Mower, good for large cutting areas.
717/258-5283
 after 5 PM
 and Anytime Weekends

1988 FORD E-250 VAN



300, 6 Cyl., AT, PS, PB, AM/FM/Cassette, Racks, Steel Plate w/Floor, Wire Cage, 12,500 Miles..... \$8,250

1986 DODGE ROYAL SE



8 Pass. Van, 318 V8, Auto, AC, Loaded, One Owner, Over 100,000 Miles, Good Cond. \$4,990

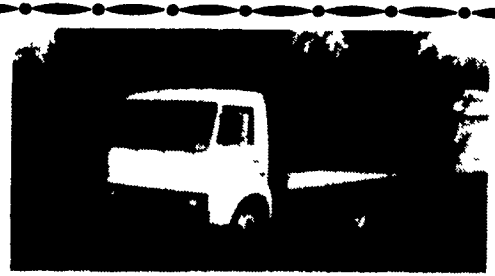
1981 Chevy 17 Pass. Small Bus Van, 350 V8, AT - Ideal For Church Group, Etc., 86,000 Miles..... \$3,200

"THE TRUCK PEOPLE"
BOYER MOTOR CO.
 1065 S. State Street
 Ephrata, PA 17522
717-738-1885 1-800-786-1835

35 TRUCKS & TRAILERS

13' Eby's Aluminum truck body with removable side boards, custom made tarp, real nice, \$2000 716-595-3210

Two F600s, 1982, 22,000 miles, 4SP, automatic, 16' Morgan box, gas, AC, PS, powerlift, excellent \$8,000, \$6,000 1976 Int'l 1800A tractor, gas, AB, PS, 109,000 miles, nice \$2,500. 1976 Dodge 800 tractor, gas, AB, PS, 88,000 miles, nice \$2500 717-652-8676.



1984 EVECO Model 120
 11,000 GVW,
 Nice Condition
717/684-5895
 After 6 PM

Our 52nd Year
INTERNATIONAL TRUCKS
 Sales • Service • Parts

IVECO
 Parts, Service & Warranty

SALES - LEASING
STATE INSPECTION
ASE Certified Mechanics!

CENTRAL GARAGE INC.

S. 2nd St., Womelsdorf, Pa. 19567
215-589-4581

UD TRUCKS

Nissan Diesel America, Inc. Sales-Service-Parts

Cummins Service • Parts

— REPAIRS —
 All Make Trucks And Cars

NEW TRUCKS

1991 International 4600LP.....21,440 GVW
 1991 International 4700.....29,900 GVW
 1990 International 900.....32,900 GVW
 1990 International 700 (2 in stock).....29,000 GVW

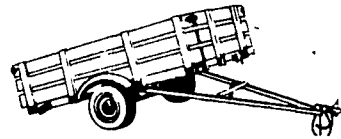
USED TRUCKS

1988 International 1754.....25,000 GVW
 1987 International 400.....17,640 GVW
 1986 International 1654.....20,500 GVW
 1983 Mack (Jerr-dan Rollback)33,000 GVW
 1985 Mercedes25,000 GVW
 1978 Ford NL-60019,500 GVW
 1976 International Fleetstar35,000 GVW
 1971 International Loadstar Dump20,500 GVW

USED VAN BODIES FOR SALE!

BURKHOLDER BROS. MFG.

TRAILER SALES • SERVICE



CUSTOM MADE TRAILERS

- HITCH INSTALLATION
- COMPLETE WIRING
- MOST SIZES AVAILABLE

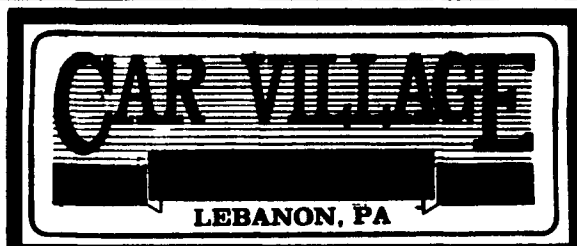
STOP BY TO SEE OUR INVENTORY

717-355-2458

221 E SPRUCE NEW HOLLAND

WE ARE
 30 MIN. from HARR.
 30 MIN. from LANC.
 30 MIN. from READING
 45 MIN. from YORK

RTE. 422,
 2300 WEST CUMBERLAND ST.,
 LEBANON, PA



717-274-2000

(Across From The Boscov's Mall)

FAMILY OWNED & OPERATED FOR 22 YEARS

THIS IS JUST A SMALL PORTION OF OUR HUGE INVENTORY



87 Ford F-350 Stake Body Dump 27,000 Miles, 460, 5 Spd., With Overdrive, Dual Tanks, 12 Foot Reading Bed



88 Chevy C-30 Cube Van V8, AT, 14 Foot Aluminum Grumman Box, Roll Up Rear Door



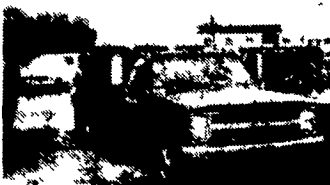
Dual Rear Wheel Super Cab 85 Ford F-250 Super Cab, Dual Wheels, 460, 4 Spd, A/C, Dual Tanks, Tilt Wheel & Cruise, Very, Very Nice



88 Ford F-350 With Texas Style Bed 7.3 Diesel, AT, AC, Centurion Conv., Full Power, Rear Seat Folds Into Bed, 19,000 Miles
One Of A Kind



89 Chevy C-3500 Crew Cab Dually 454 4 Sp., Trailer Tow Package, Dual Tanks, Running Boards, Silverado & More \$18,985



85 Chevy C-30 Dump Truck Contractors Bed, Utility Storage Behind Cab, V8, 4 Spd., Runs Great
Only \$7,985



Ready For Your Truck Roll Up Door \$1,495



86 Ford E-350 Centurion Conversion It'll Tow Anything 460 V8, AT, AC, Full Power, Dual Rear Wheels, Rear Sleeper Sofa, Factory Tow Package, 29,000 Original Miles



12 Passenger 86 Ford E-250 Club Wagon Local 1 Owner, V8, Auto, Frt. & Rear A/C, Room For Your Growing Family



89 Ford F-250 Super Cab XLT Lariat, This Truck Will Pull 460 Fl, AT, AC, Dual Tanks, Remainder 6/60,000 Warranty



88 Chevy C-30 Cab & Chassis 4 Cr. Crew Cab Dually 454, 4 Speed, 41,000 Miles



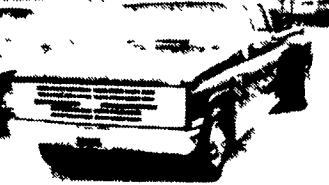
4 Wheel Drive, 88 Ford Ranger XLT V8, 5 Spd., AM-FM Cassette, 2 Tone Paint, 33,000 Miles, 2 To Choose From



67 International Cab & Chassis V8, 4 Sp., 2 Speed Rear, 112" Cab To Axle, Very Nice, Very Clean, Good Rubber, Ready To Go



88 Ford F-350 Dump Truck Almost New, Only 14,000 Miles, V8, Auto, Remainder Of New Truck Warranty



88 Chevy C-30 Crew Cab Dually Beautiful Only 14,000 Miles, 454 Fuel Inj. V8, AT, AC Full Power, Tow Pkg., Running Boards, Chrome Wheels



89 Ford F-350 Dually Beautiful, 20,000 Original Miles 460 F.I., 5 Spd. With Overdrive, A/C, XLT Lariat

Coming
4 Wheel Drive 86 Ford F-350 Utility Box Truck V8, AT, Reading Box, Very Nice

Complete 8' Box Including Tailgate & Chrome Rear Bumper, From 89 Ford Truck, Black Finish, Nice & Straight, \$875

AND MORE TRUCKS!