

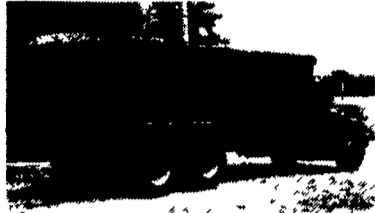
'87 Chevy C20 HD, 3/4 ton, 4x4, 350 FI, auto., PB, PS, lock-out hubs, AM-FM, dual tanks, 8,600 GVW, 36,000 miles, excellent condition, \$8,975 717-733-2873

'86 GMC 6000, 10' Thermo King Box, Detroit 5-spd, \$5,000 '82 GMC 7000, 22' van, 366 5-spd, \$3,500 '83 GMC 1 ton PU, 4-spd, Walk-In Morysville utility, \$2,800 717/762-6415

1953 IH L180, 40,000 original miles, 5+2 trans, twin cylinder hoist, steel bed, grain sides, 12 volt, runs great; 18' steel flat bed w/ scissor hoist and grain sides w/without 65 IH 1800, truck not running Best Offer 609-758-3043 Eves

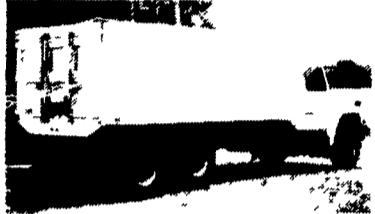
FARM BODIES FROM HOSTETTLERS

KNAPHEIDE STAKESIDE GRAIN BODY



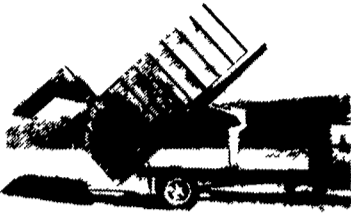
96" or 120" Wide
Choice of Tailgates
Choice of Side Height

KANN ALUMINUM



Less Weight
Less Maintenance
Equals More Capacity

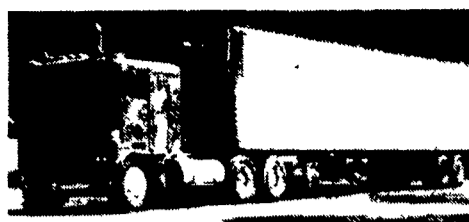
SCOTT MULTI-PURPOSE DUMP



High Lift Tailgate
Tapered Sides
Multi Uses

**WE ALSO HAVE
HOISTS
GRAIN TARPS
TOOL BOXES
VARIOUS OTHER
TRUCK EQUIPMENT
AVAILABLE**

Hostetler Truck Bodies & Trailers
Rt. 322 Milroy, PA 17063
1-800-441-5161



1974 Kenworth 1693TA Cat 425 13 Speed 38,000 lb. Eaton Rears, Rear Bridgestone Luggers. 1971 Great Dane 45 Ft. Sliding Tandem Insulated New Drums, 60% Brake Lining, Good Rubber, Rlg Good Condition Asking \$8,000 Area 717-933-4038



FLATBED DUMP WITH SIDES
12'x8' - \$500
BINKLEY & OBER INC.
717-569-0441
Ask For: Jake



1981 Ford Cat Diesel
13 Speed Road Ranger With Myers 540 Manure Spreader, Good For Hauling, Laying Hen Manure. Spreader Is Like New (Only Used Once), In Excellent Condition. Asking \$32,500. Two Other Spreaders Available.
Call 717-789-3960



2 - 1942 Dodge Power Wagon 4x4. For Parts Or Restoration Best Offer 69-466-9317

COUNTRYSIDE AUTO SALES

Rt. 72 3 Miles North of Manheim
Late Model CARS AND TRUCKS
Something For Everyone! M-F 9-7 Sat. 9-4
OVER 60 CARS & TRUCKS AVAILABLE
Trades Accepted
(717) 865-3488-Home (717) 664-2170-Office

TRUCKS

- 1989 F-150 4x4 F.I. 6 Cyl., 4 Speed, PS, PB, AM-FM, Nice Truck, Reasonably Priced, \$7,350
- 1988 Chevrolet 1500 F.I. 4.3 V6 4 Speed, PS, PB, AM-FM Dark Blue Finish, \$5,800
- 1988 Chevrolet S-10 Fuel Inj. 4 Cyl., 5 Speed, AM-FM Cass., Very Economical, \$3,850
- 1988 F-350 4 Dr. Dually 7.3 Diesel, Automatic, XLT, Lariat Package, All Power Option, \$11,500
- 1988 Bronco II 4x4 F.I., V6 5 Speed, PS, PB, XLT Package, Black Finish, Sharp, \$7,350
- 1987 Dodge Power Ram 250 4x4 V8, Auto, PS, PB, AM-FM A Real Work Horse, Only \$5,800
- 1987 Chevrolet C-20 4x4 V8, Automatic, PS, PB, AM-FM, Charcoal Finish, \$6,350
- 1987 F-150 F.I. 6 Cyl., 4 Speed w/Overdrive, PS, PB, AM-FM, Low Miles, Only \$5,400
- 1987 Ford F-250 FI 6 Cyl., 4 Speed, PS, PB, AM-FM, Good Condition, High Miles, Low Price, \$4,350
- 1987 Dodge Ram 50 4 Cyl., 5 Speed, AM-FM Cass., New Radials, Custom Paint, \$3,450
- 1987 Dodge D-150 Slant 6 Cyl., 4 Speed w/Overdrive, PS, PB, Shortbed Wagon Wheels, Sharp \$4,350
- 1987 Jeep Comanche Fuel

- Inj., 4 Cyl., 4 Speed, Air Cond., AM-FM Cass., Cap Excellent Condition, \$4,650
- 1986 Chevrolet S-10 Blazer 4x4 F.I. V6, 5 Speed, PS, PB, Air Cond., AM-FM Stereo, \$5,995
- 1986 Jeep Cherokee 4 Dr. 4x4, F.I. 4 Cyl., 5 Speed, PS, PB, AM-FM Cass, Very Nice, Only \$5,800

VANS

- 1987 Chevrolet C-20 HI-Top Conversion Van V8, Auto, Fully Loaded, Color TV, Must See \$7,350
- 1985 Dodge Caravan 4 Cyl., Auto, PS, PB, Air Cond., 7 Passenger, Beige With Woodgrain, \$4,650
- 1984 Ford Conversion Van, 302 Automatic w/Overdrive, PS, PB, Air Cond., Good Condition, \$4,995
- 1984 Plymouth Voyager 4 Cyl., 5 Speed, PS, PB, AM-FM Stereo, 5 Passenger, Burgandy Finish, \$3,850

CARS

- 1990 Chevrolet Lumina, 4 Door, \$6,850
- 1989 Plymouth Reliant, 4 Door, \$4,995
- 1989 Chevrolet Celebrity, 4 Door, \$4,995
- 1989 Oldsmobile Cutlas Calais, 2 Door, \$6,350
- 1988 Ford Escort 2 Door \$3,850
- 1988 Ford Tempo 4 Door \$4,850
- 1987 Ford Taurus 4 Door, \$4,650
- 1987 Pontiac Grand Am, 2 Door, \$4,995

OVER 60 YEARS IN BUSINESS!

WOLF MOTOR CO.

ROUTES 72 & 283, LANCASTER, PA 17601



CENTRAL PA'S FORD TRUCK DEALER

Sales Reps. Ed Boring Nelson Hess Jon Jensen
Dennis Asel, Mgr.

717-299-4331 Toll Free 800-637-6612



1991 CARGO VANS

Different Packages Available



'91 FORD F-350 CREWCABS

4x4 or 4x2, Diesel or Gas, Auto. or Stick, Custom or Lariat, 4 To Choose From
From \$16,400*



'90 FORD F600 STAKE BODY

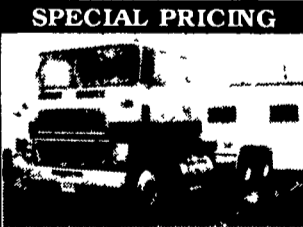
20,000 GVW, 370 V8, 5 Spd., 14 Ft. Flatbed
\$20,400*

CALL TODAY! WE'RE READY TO DEAL!



'90 FORD 15 FT. PARCEL VANS

1 In Stock
1 - Unic Body
1 - Grumman Van Body Diesel



'91 FORD CLT-9000

425 CAT, 13 Spd., Air Ride, Air Suspension, Jake Brake, Loaded!



'78 INT'L MV404

V8 Gas Eng., 5/2 Trans., 24 Ft. Van Body, PA Inspection
\$3,800

★ ★ ★ MARCH TRUCK SPECIALS ★ ★ ★



'82 VOLVO

Diesel Engine, 28,000 GVW, 18 Ft. Aluminum Poultry Body, Ready To Go To Work
Reduced To \$6,800



'80 INTERNATIONAL

DT466 Engine, 28,000 GVW, Tan And Brown
\$7,900



'86 HOT SHOT

Ford F-350, 6.9L Diesel, 10 Speed, Sleeper, Tan
\$9,450

CARGO

* Price includes all applicable rebates

