

32 MISCELLANEOUS

Wind Power System, 5000 watt generator, "BRAIN" control panel, tower (62') was \$4000 Must sell now \$3500 Franklin Co 717-349-2192

FOR SALE 750 good bushel crates, \$1.25 each Call (717)677-7641/

Large Molasses tank, 24' long, holds 20 ton Parts for Daffin grinder 717/532-5183

LIVE GAME FISH



Fingerlings and Adults. Large and Small Mouth Bass. Spotted and Rock Bass. Bream Crappies. Trout. Channel Cat. Bullheads. Walleyes. Perch. Minnows. Northern Pickerel. Muskies. Red Gills. Mullet. Carp. Eels. Turtles. Frogs. Israeli Carp. Also Aquatic Plants and Water Lilies COLORFUL Catalog \$2.00.
Truck, Air and Parcel Post Delivery
ZETTIS FISH HATCHERIES
DRIFTING, PENNA. 16834
Phone: 814-345-5357

FIREWOOD

Buy Now, Let Dry For Next Winter, Approx. 2 1/2 Cord Loads, \$150.00 Delivered Within 20 Miles, Also Wood Mulch And Sawdust

BEILER'S SAWMILL
442 Vintage Road, Paradise

Call 215-593-5989
Between 6:00 and 6:30 Evenings

PAINTED STEEL ROOFING & SIDING

- Galvanized/Galvalume
- 29/26 Gauge
- 3 Major Brands Available
- Large Stock Trim & Sheet

AS LOW AS \$32.00 per/sq.
Conestoga Building Supply
New Holland, PA 17557
717-354-2613 or 1-800-544-8464

34 AUTOS

1987 Dodge Daytona, take over payments with good credit, 301-943-3339.

GOVERNMENT SEIZED vehicles from \$100 Corvettes, Chevys, Porsches, and other confiscated properties For Buyers Guide (800)772-9212 ext 1370 Also open evenings & weekends

Mercedes 220S Gas 1964, complete less engine, for parts \$300.00 Also 280 Soc Head and intake with Dual Carbs \$200 each 717-865-3673.

34 AUTOS

Burkholder Auto Danville (717) 437-2212

- 89 Honda Civic, 4 Door, 5 Speed, 19,000 Miles\$6,995
- 87 VW Jetta GLI Black, 52,000 mi., Sun Roof. \$5,800
- 89 Honda CVC LX 4 Dr, 12,000 Mi.\$8,395
- 89 Pontiac Firebird, Blue, T-Top, V6, 12,000 Mi.\$7,895
- 88 Toyota Corola SW, Brown\$4,600
- 88 Mercury Tracer SW, Gold, 29,000 Mi.\$4,200

33 RECREATIONAL VEHICLES

1986 36' Coachman Motor Home 454-GMC, PS, PB, CC, 2A/C, 6.5-Gen Microwave, Tub/Shower, Awning 27K-Miles Excellent condition Snyder/Co 717-743-6732

1987 31' Southwind Basement, 454Chevy, PS, CC, 2 A/C, color TV, generator, microwave, tub/shower, awning, 16K miles, mint condition 717-675-4553

Honda 300 Four Trax, new condition (717)426-3135

SHASTA Mini Motor Home, 1981, 23', 28,700 miles, cruise control, TV ant & hook-up, awning, sleeps 6 (bunkbeds) full bath, clean, very good maintenance, \$13,900 717-692-4321

35 TRUCKS & TRAILERS

1979 Ford 800, 429 gas, 32,000 GVW, 5&2, power steering, air brakes, 1981 Ford 800, 429 gas, 32,000 GVW, 5&2, air brakes and power steering, 1980 Int 1854, 466 diesel, w/22' Morgan van body, 5&2, 27,000 GVW 301-877-9889

1980 Chevy 30 stake body, V8, 4 spd, \$2,800, 1981 Ford F250, V8, 4 spd, super cab, \$2,700, 1972 Ford L-900, \$3,000 717-933-4114

1980 Raven Dump Trailer, all aluminum frame and box, 72" sides, 2-way end gate, 31' frame, 30' box, tandem axle w/lift axle, \$15,900 Call 717/359-4626

1981 1/2ton automatic Dodge pickup, 4WD Best Offer. (215)562-8254

1975 Ford Stake Body w/ power tailgate, 21,000 GVW, 5+2, \$1,500 OBO 215/795-2591

1975 International School Bus, 345 engine w/out seats Great running condition Also, parts bus one or both for \$650 or best offer 215-249-1592, 215-340-1727

1975 Int ten wheel truck, 2070A diesel, 270 Cummings, 7 spd trans, 20' metal grain body, good condition 301-592-2281

1977 Mack D M Dump 1988 R & S Body 15 ft 237 Engine rebuilt 35000 mi complete new suspension 1989 new clutch, rebuilt rear 1990 PS AC 24 5 tubless tires truck, positively road ready, (717) 284-4505

1978 GMC C-60 454CID, 5x2, 10-20 rubber, 18' aluminum livestock body w/ decks, two saddle tanks, two main tanks, air brakes. Excellent condition. Any questions call between hours of 8-4:30 Ask for Phil or J R 203-795-6037

22' Eby aluminum gooseneck cattle trailer, excellent condition. Call for details 609/299-4952.

24' tandem Swartz roll back, 15ton, hyd stand, on '73 Kenworth 4 1/4 H.P. cab, RTO, 9513 transmission, 4 aluminum buds BEST OFFER. 717-225-3798, 717-873-3928.

42' flatbed trailer, \$4,000 OBO (717)799-5760.

65 GMC septic truck, V-6, Rupp pump and Wisconsin, good condition, \$4,000 OBO (717)993-6989.

1974 Ford lime spreader, hydraulic boom, spreader, good condition 717-428-1219

1975 Ford LN800, 389 gas, 33,000 GVW, 26' flatbed, air brakes Saxonburg, PA 412/352-1081

'89 Kenworth T800 425 CAT 13 speed Conv 4,400 rears double frame air ride, air ride cab, excellent shape (717)253-3759

'90 Ford F150, 4x4, super cab, 302 EFI, 5 spd, PS, PB, air, AM-FM, dual tanks, lock-out hubs, 17,000 miles w/balance of factory warranty, excellent condition, \$13,900 717-733-2873

'90 Ford F250, HD, 3/4 ton w/Stahl utility body, 351 EFI, 5 spd, PS, PB, AM-FM, 8,600 GVW, 3,000 miles w/balance of factory warranty, dark blue, like new. \$12,500 717-733-2873

Dodge 440 truck motor, runs very good, \$500 OBO New 366 Chevy truck motor, \$1,300 firm (717)762-7940.

Dodge D250 pickup, 1986, 3/4 ton, silver, power steering & brakes, low mileage, automatic trans, warranty Zartman Dodge, Lititz, PA 717/626-8551

FOR SALE 1984 Ford 250, 6.9 dsl, 2WD, automatic, loaded, newly rebuilt engine 10,000 miles ago, Texas truck, excellent condition \$5800 OBO 717-539-2614.

Sides for 40' flat trailer. 6' high firewood/hay, straw/livestock. ect \$300. 215/968-4561

Ford L800 Tractor, 391 Allison, sliding wheel, 60,000#, \$1,200 215/968-4808 nights.

For Sale 1988 GMC TopKick, Cat 3208, 5/2 spd 22' body, Air Brakes, Tag Axle, 25,000# hoist, 31,000# G.V.W., 27,500 miles \$26,000 203-274-8132

General 40' equipment trailer w/hydraulic ramps, \$4,500 301-833-2311

Jeep J20 Pick up, 1987, 19,900 original miles, automatic, AC, PS, white wagon wheels Trailer tow package, Meyers snow plow mount w/2 blades, excellent condition \$9500 301-535-1562

Like new 1986 Ford CF6000 truck, 26,500 GVW, 7,200 miles, 16' dump grain bed. (301)343-1077

MACK PARTS '68 Rmodel cab, \$500 38,000 rear axle bogies and 450 ratio, \$500. 12,000 front axle, \$300. Single axle rear, \$350 V-864 block w/injection pump, \$325 Cummins 903 engine parts 903 Jake brake. (2) 15" lowboy axles with air ride, \$1,100. 411 rear cutoff, 38,000#, \$600. (717)272-9595.

Mack truck parts, 237 motor complete \$2,000, (2) 6-speed X1070 transmissions, \$1,500 each; 5-speed, \$250, 38,000 cutoff, 6 3/4 on 20" spokes, \$1,500; twin dump cylinders, \$500; (2) 16 1/2' triaxle dump bodies, \$750 each, Schuylkill County. (717)739-2701

Motor wanted for Ford LN700, new or low mile 391 or diesel conversion 908-996-7012 Evenings.

1984 Chevrolet C-70 Trucks, stake body, equipped with (4) 250 gal. SS tanks, reels and hoses, used for lawn care. Will separate. 717/365-3562.

1984 Truck, 4x4, F-250 Custom, 351, \$2,000 OBO 301/658-5877

1986 Ford Ranger 4x4, extended cab, STX, charcoal & silver, loaded, excellent condition Call 215-926-2441

1986 Mack RD686 tandem dump 300 engine, 6 speed, AC, 18K front axle, 44K rears, heated, 16 cy. body, trailer hitch, 11R22 tires, 115,000 miles, excellent maintenance, \$43,000. (717)828-2544.

1987 Ford Tandem Dump 15 1/2' new steel bed. Like new cond. \$36,000 717-436-6137

1987 Ravens dump trailer, 36 frame, 34 box, 2-way gate, air ride, 11 24 5 rubber, Budd wheels, tarp and bows (717)354-5796.

1987 S10 Blazer, red and silver, Tacho package, all power options, cruise, V6, Automatic, \$9000 OBO. 717-364-5460 Bradford Co.

1987 Utility Flatbed 48x102 121' spread, air suspension, aluminum buds low-pro tires, 5' side kit tie-downs under mounted side rack 717-236-3832

1989 Chevy pickup 1500 4x4 shortbed, 350 V8, Silverado package, towing package, garage kept, very loaded, \$12,900. (301)287-8795.

1990 Trailstar dump trailer, 34' frame, 33' box, 60" side w/roll over tarp. 717-633-5202

'87 Ford F150, 4x4, 302 EFI, HD, 4 spd., PS, PB, AM-FM, lock-out hubs, \$5,975. FIRM. 717-733-2873

'88 Chevy Cheyenne 1500 1/2 ton, 4x4, 4.3 V6, HD, 4 spd., PS, PB, blue, 18,000 miles, like new, \$8,975 717-733-2873

'88 Ford F250, 3/4 ton, 300 EFI, HD, 4 spd., PS, PB, AM-FM, dark blue, \$7,200 717-733-2873

'88 Ford XLT Lariat F250, 4x4, super cab, 351 EFI, auto., PB, PS, PW, PDL, cruise, tilt, air, AM-FM, dual tanks, 8,800 GVW, Michelin radials, 26,000 miles, excellent condition, \$13,500. 717-733-2873

'89 Chevy 2500 HD 3/4 ton, 4x4, 350 FI., auto., PB, PS, AM-FM stereo, limited slip differential, 8,600 GVW, 9,000 miles w/balance of factory warranty, \$12,900 717-733-2873

'89 Chevy 2500, HD, 3/4 ton w/Reading fully enclosed utility body, 350 F.I., auto., PB, PS, AM-FM, 8,600 GVW, 20,000 miles, blue, excellent condition, \$11,995 717-733-2873

'89 Ford E250 Super Cargo Van, 300 EFI, auto., PB, PS, air, 8,100 GVW, charcoal, 32,000 miles, excellent condition, \$9,950 717-733-2873

'89 Ford F150 HD, 1/2 ton, 300 EFI, 4 spd., PS, PB, AM-FM, dual tanks, 6,250 GVW, excellent condition, \$6,950. 717-733-2873

'89 GMC Sierra SL 3500, dual whl., short whl. base, cab & chassis, 350 FI., auto., PB, PS, AM-FM, 10,000 GVW, 14,000 miles, like new, \$9,800 717-733-2873

Keystone Peterbilt, Inc.

1467 Manheim Pike • P.O. Box 4396 • Lancaster, PA 17604

1-800-729-7383



717-299-6630

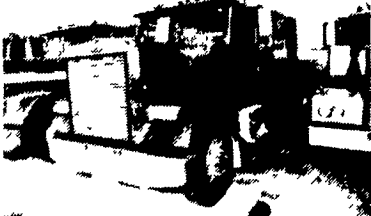
Trucks — New and Used



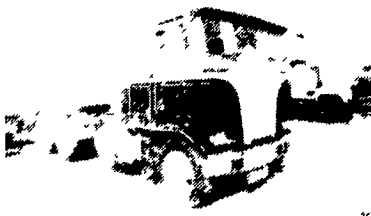
Several 1984 & 85 PETERBILT, Double Bunk Cabovers, 350/400 Cummins, Some With Jakes, 9 & 13 Speed, Air Ride Susp., Fleet Maintained, 24.5 Steel, Some Alum., Wheels, PS, AC.



(2) 1986 PETERBILT, 362 Double Bunks, NTC 350 w/Jake, 9 Speed, 355 Axle Ratio, Air Ride Susp., WHD 8 Alum. Wheels, 24.5, PS, AC - Real Clean Units - One With Fresh Overhaul, 2 Yr., 200,000 Mile N.O.W.



1984 FREIGHT LINER, Conv. w/60" Sleeper, 400 Cummins, 13-Speed, Air Ride, 24.5 Aluminum Wheels - Nice Truck - **MUST GO!!!**



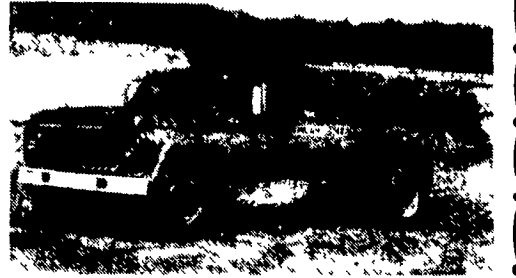
1979 KENWORTH K100 NTC, 400-Cummins, Big Cam III, w/Jake, RTO-12513, Air Ride Susp., FRESH REBUILD ON ENGINE!



1979 MACK R686S, 300 HP, 6 Speed, 34,000 Lb. Differential, Camel Back, PS, Air Ride Cab, Complete Wet Line, 20" Spoke.



1979 MACK TANDEM DUMP 14' Steel Body, 300 HP, Jake Brake, 6-Speed, 38,000 Diff, Very Good Mechanical Condition.



1974 Ford 361

5 Speed, 2 Speed Rear With 410 Knight Manure Spreader, Good For Hauling All Types Of Manure. Spreader In Good Condition. Asking \$10,500
Call 717-789-3960

UTILITY TRAILERS AND TRUCKS

- 6'x10' Utility, Low Floor Height, 16" Solid Sides..... \$995
- 6'x8' Single Axle, 1500# GVW Mesh Floor Rear Ramp..... \$550
- Used 6'x10' Single Axle Heavy Duty..... \$600
- 7'x16' Single Axle Flat Bed, Unique Trailer..... \$1,095
- 6'4" x 16' 2 Axle Utility, Rear Wire Mesh Ramp, Great for 4 Wheelers or Mowers..... \$1,450
- 20' Gooseneck Flatbed, Flip Up Beavertail, 6 Ton, Deck Over Neck..... \$3,550
- 27' 12 Ton Gooseneck Low Boy, 22' Flat 5' Beavertail and Ramps..... \$5,495
- 6'x12' Enclosed Cargo Trailer, Rubber Torsion Axle, Red..... \$2,195
- 7'x16' Two Axle Enclosed Cargo Trailer, Double Rear Doors, Rubber Torsion Axles, White..... \$3,595
- 16' Double Axle Utility Trailer, 7000# GVW, Wire Mesh Ramp, Electric Brakes, Blue..... \$1,850
- 18' Full Deck Car Hauler, 8000# GVW, Electric Brakes, Ramps, Black..... \$1,990

TRUCKS

- 1985 IHC with New 24' Danco Roll Back Body, 9.0 Diesel, 5 Speed, 26,000 #GVW..... \$17,600
- 1973 Model 1510 IHC with 10' Dump Body, 16,000# GVW..... \$2,995
- 1975 1600 IHC With 14' Van Body And Liftgate, 17,000# GVW..... \$2,995
- 1979 Chevy V8 Gas, 5+2 Speed, 30,000# GVW, New 16' Knapheide Steel Platform With 52" Grain Sides And 15 Ton Double Acting Hoist..... \$10,900
- 1982 GMC V8, 5 Speed, 24,000# GVW, New Harsh Hoist With Used 14' Grain Body..... \$8,500

CALL FOR MORE DETAILS



Hostetler Truck Bodies & Trailers
Rt. 322 Milroy, PA 17063
1-800-441-5161