

Central U.S. Carlot

Pork Report
Feb. 27, 1991

Report supplied by USDA

CENTRAL U.S. CARLOT PORK REPORT FOB OMAHA BASIS INCLUDES MAJOR PRODUCTION AREAS IN MIDWEST AS OF 3:00 P.M. COMPARED TUESDAY'S 3:00 P.M. CLOSE: FRESH PORK LOINS MOSTLY 1.00 LOWER; BOSTON BUTTS WEAK TO 2.00 LOWER; SKND. HAMS SELECTED WEAK TO 2.00 LOWER; SDLS. BELLIES FIRM IN VERY LIGHT TEST. DEMAND LIGHT, MOVEMENT SLOW ON MODERATE OFFERINGS AND SUPPLIES.

59.5 LOADS PORK CUTS
30.0 LOADS TRIM/PROCESS PORK CUTS

LOINS, REG., FRESH
14-18 LBS., 6.5 LOADS, RANGE 100.00-105.00, WGHTD. AVG. 102.31.
1/4" TRIM, 14-18 LBS., 6.5 LOADS, RANGE 120.00-122.00, WGHTD. AVG. 120.62.

48-22 LBS., RANGE 102.00, WGHTD. AVG. 102.00 A.
1/2" TRIM 18-22 LBS., RANGE 122.00, WGHTD. AVG. 122.00 A.
COMBOS 22/UP LBS., RANGE 88.00, WGHTD. AVG. 88.00 D.

LOIN, BLS CTRCT 5-7 LBS.
3.5 LOADS, RANGE 218.00-234.00, WGHTD. AVG. 221.57.

BNLS SIRLOIN .75-1 LB.
2.5 LOADS, RANGE 170.00-182.00, WGHTD. AVG. 177.00.

TENDERLOIN 1.25 AND DOWN LBS.
2.0 LOADS, RANGE 325.00-355.00, WGHTD. AVG. 341.50.

PICNIC FRESH FOR SMKR TRM, RS
RANGE 62.50, WGHTD. AVG. 62.50 A.

COMMODITY 4-8 LBS.
RANGE 50.50, WGHTD. AVG. 50.50 E.

BOSTON BUTT
4-8 LBS., 7.0 LOADS, RANGE 71.00-78.00, WGHTD. AVG. 74.46.
1/4" TRIM 4-8 LBS., 7 LOADS, RANGE 88.50-96.00, WGHTD. AVG. 93.11.
COMBOS 8/UP LBS., RANGE 73.00, WGHTD. AVG. 73.00 A.

SPARERIB, FRESH
1.5-3.5 LBS., 1.5 LOADS, RANGE

118.00-125.50, WGHTD. AVG. 120.50
SPAREBRIB, FROZEN
1.5-3.5 LBS., 1 LOAD, RANGE 122.00, WGHTD. AVG. 122.00.

LOIN BACKRIB (BOXED) FRESH/FROZEN
1.5/DN LBS., RANGE 280.00, WGHTD. AVG. 280.00 B.

1.75/DN LBS., 1.5 LOADS, RANGE 268.00-278.00, WGHTD. AVG. 273.33
1.75-2.00 LBS., 0.5 LOADS, RANGE 240.50, WGHTD. AVG. 240.50.

2.00/UP LBS., 0.5 LOADS, RANGE 209.00, WGHTD. AVG. 209.00

HAM, SKINNED, SELECTED FRESH 17-20 LBS., 3 LOADS, RANGE 76.00-78.00, WGHTD. AVG. 76.67.

FRESH 20-26 LBS., 20 LOADS, RANGE 68.00-71.00, WGHTD. AVG. 69.55.

HAM, SKINNED, COMMODITY FRESH 17-20 LBS., 4.0 LOADS, RANGE 76.00-78.00, WGHTD. AVG. 76.50.

FRESH 20-26 LBS., 2.0 LOADS, RANGE 67.00, WGHTD. AVG. 67.00

FRESH 26-32 LBS., RANGE 69.00, WGHTD. AVG. 69.00 A.

FRESH 32/UP LBS., RANGE 69.00, WGHTD. AVG. 69.00 A.

BELLY, SDLS, SKIN-ON, FRESH 10-12 LBS., 1.0 LOADS, RANGE 52.00, WGHTD. AVG. 52.00.

12-14 LBS., 1.0 LOADS, RANGE 55.00, WGHTD. AVG. 55.00.

14-16 LBS., 2.0 LOADS, RANGE 54.00-55.00, WGHTD. AVG. 54.50

16-18 LBS., RANGE 50.50-52.50, WGHTD. AVG. 51.61 A.

18-20 LBS., RANGE 48.00, WGHTD. AVG. 48.00 A.

20-25 LBS., RANGE 40.00-43.00, WGHTD. AVG. 41.50 A.

PORK TRIMMINGS BONELESS PROCESSING PORK (CHEMICAL LEAN)
COMBO 42% FRESH, 3 LOADS, RANGE 43.00, WGHTD. AVG. 43.00.

BOXED 42% FROZEN, RANGE 41.00, WGHTD. AVG. 41.00 B.

COMBO 72% FRESH, 6.0 LOADS, RANGE 63.00-67.00, WGHTD. AVG. 65.33.

BOXED 72% FROZEN, 11 LOADS, RANGE 72.00-74.00, WGHTD. AVG. 72.73.

PICNIC CUSHION MEAT COMBO 92% FRESH, RANGE

130.00-140.00, WGHTD. AVG. 135.00 A.
BONELESS PICNIC MEAT
COMBO 72% FRESH, 5 LOADS, RANGE 68.00-70.00, WGHTD. AVG. 69.00.

BOXED 72% FROZEN, 4 LOADS, RANGE 73.00-74.00, WGHTD. AVG. 73.25

SKINNED JOWLS
COMBO FRESH, RANGE 31.00, WGHTD. AVG. 31.00 A.

BOXED FROZEN, 1.0 LOAD, RANGE 33.50, WGHTD. AVG. 33.50.

NOTE: (*) REFLECTS 1/4" TRIMMED PRODUCT BROUGHT BACK TO A REGULAR COMMODITY BASIS

ABCDE AFTER QUOTES REPRESENTS DAYS SINCE LAST ACTUAL MARKET TEST. QUOTES ARE DROPPED AFTER 5 DAYS OF NO TEST OR BEFORE IF THEY NO LONGER REFLECT CURRENT MARKET CONDITIONS

PORK CARCASS CUTOUT WEDNESDAY, FEB. 27

ESTIMATED GROSS CUTOUT VALUES OF A 175 LB HOG CARCASS BASED ON USDA CUTTING YIELD TESTS AND CARLOT PRICES. WEDNESDAY'S CARCASS GRADES & PRICES PER CWT:

US#1 69.88, CHANGE FROM TUESDAY'S VALUE -0.55; US#2 67.73, CHANGE -0.50; US#3 65.56, CHANGE -0.46; US#4 63.40, CHANGE -0.42.

TODAY'S CALCULATIONS FOR US#2 175 LB. PORK CARCASS: HAM, SKINNED, 14-20 LBS., 21.01% OF CARCASS, 76.50 VALUE, CHANGE FROM TUES. -1.50; LOINS, 1/4" TRIM, 14-22 LBS., 20.33% OF CARCASS, 120.50 VALUE, CHANGE FROM TUES. -1.00.

BELLIES, SDLS, 12-14 LBS., 13.90% OF CARCASS, 55.00 VALUE, CHANGE FROM TUES. 1.50; SPARERIBS, 3.5DN LBS., 3.03% OF CARCASS, 122.00 VALUE.

PICNICS, 8-12 LBS., 10.31% OF CARCASS, 47.00 VALUE, CHANGE FROM TUES. -0.50; BUTTS, 1/4" TRIM, 4-8 LBS., 7.25% OF CARCASS, 93.00 VALUE, CHANGE FROM TUES. -2.00.

JOWL, 2.85% OF CARCASS, 31.00 VALUE; NECKBONES, 1.52% OF CARCASS, 14.00 VALUE.

FEET, 1.05% OF CARCASS, 24.00 VALUE; TAILS 0.22% OF CARCASS, 54.00 VALUE.

TRIM 72%, 2.19% OF CARCASS, 65.25 VALUE, CHANGE FROM TUES. 0.25; LARD 10.85% OF CARCASS, 12.25 VALUE.

TOTAL CARCASS: 94.51%.
US #2 CARCASS VALUE PER CWT: 67.73.

Diffenbach Auction Center
New Holland, Pa.

Wednesday, Feb. 27, 1991
Report Supplied by Auction
TOTAL LOADS: 44.
ALFALFA: 90.00-140.00.

MIXED HAY: 58.00-107.00
TIMOTHY: 56.00-96.00.
ORCHARD GRASS: 94.00.
STRAW: 65.00-90.00.
EAR CORN: 72.00-74.00.

This sale was formerly held at the New Holland Sales Stables. It is now held at Diffenbach's New Holland Auction Center Ltd., 100 W. Jackson St., New Holland, across from the prior sale location. Auction time is 10:00 a.m. Wednesday.

North Jersey Market

Hackettstown, N.J.
Tuesday, Feb. 26, 1991

Hay—Straw & Grain Report
MIXED HAY: 1.10-2.60 BALE.
TIMOTHY: 1.25-2.20 BALE.
GRASS: 1.10-1.70 BALE.
STRAW: 1.40-1.90 BALE.
CRACKED CORN: 6.25 BAG.
SHELLED CORN: 5.75-6.00 BAG.
CEDAR POSTS: 1.90 EACH.

Belleville Hay

Wednesday, Feb. 27
Belleville, PA

Report Supplied by Auction
TOTAL LOADS: 64 LBS. HAY.
ALFALFA: 80.00-122.50.
MIXED HAY: 40.00-107.50.
STRAW: 12 LOADS, 47.50-90.00.
EAR CORN: 4 LOADS, 70.00-72.50.
OATS: 2 LOADS, 1.03 AND 1.07 BU.

HAY, STRAW & GRAIN SALE
Every Thursday at 1 p.m.
Auction will continue all year long
Vintage Sales Stables, Inc.
(Rt. 30, 10 miles east of Lancaster in Paradise, PA)

For Info. L. Robert Frame, Sr. president
717-442-4181 business
215-458-8518 home Glenn S. Frame Mgr.

CRIPPLED AND DISABLED COWS, STEERS & BULLS

Slaughter Under USDA Inspection

FREE CALL
1-800-234-COWS (2697)
215-286-9400
Wayne Taylor

Lebanon, Berks, Lancaster & Chester Co.

HORSE SALE
FRI. MARCH 15, 1991
10:00 A.M.
Tack 9:00 A.M.

NEW HOLLAND SALES STABLES INC. THE ACTION AUCTION

DAIRY SALE
WED., MARCH 6, 1991
NY State Herd Dispersal
For Steven And Patricia Lawson,
Vernon, N.Y.
90 Head Of Hi-Grade
Holstein Cows Selling

LIVESTOCK IS OUR ONLY BUSINESS

MONDAY

SLAUGHTER HOGS



EARLY BIRD HOG SALE
8:00 A.M.

Sell Your Hogs At New Holland Sales Stables, Inc.
See them weighed, sold and pickup your check.

10:00 AM

HORSES MULES



1:30 PM BEEF SALE



SHEEP



CALVES

WEDNESDAY

DAIRY 11:00 AM COW SALE 12:00 NOON COWS



We have the usual run of 50 to 100 Heifers, all ages. Loads of fresh cows and springers from our regular shippers. Also some local fresh cows and springers.

1:30 P.M. FEEDER PIG SALE

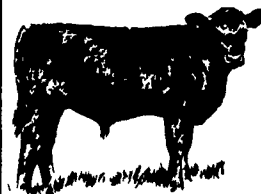


Pigs are accepted after 6:30 A.M. State graded from 8 to 12 Dairy Barn and Feeder Pig Barn are cleaned and disinfected weekly for your protection.

THURSDAY

Beef Auction 10:00 A.M.

BULLS STEERS BEEF COWS



STOCKERS & FEEDERS

12:30 P.M.

SHEEP GOATS CALVES



NEW HOLLAND SALES STABLES, INC.

12 Miles East of Lancaster Off Route 23, New Holland, Penna.

MANAGERS

Norman & David Kolb - 717-397-5538

Field Representatives

Luke Eberly - 215-267-6608 738-1865

Homer Eberly - 215-267-3047

Sale Barn Officer Manager

Roger Floyd - 717-354-4341

FAX# 717-355-0706

Order Buyer

Paul Good - 215-445-6662

Feeder Pig Representative

Mel Hoover - 717-354-8397