

Central U.S. Carlot

Beef Report
Feb. 20, 1991

Report supplied by USDA

COMPARED TO TUESDAY'S 3 P.M. REPORT: COW CARCASSES MOSTLY 2.00-3.00 HIGHER WITH BULLS STEADY. OFFERINGS FAIRLY LIGHT WITH DEMAND MOSTLY MODERATE.

COW AND BULL CARCASSES
FOB OMAHA BASIS
18 LOADS REPORTED
UT, BRK 2-4, 4 LOADS, RANGE 87.00-88.00, LATEST ESTB. MKT. 87.00-88.00.

UT, BNG 1-3 400 & UP, 7 LOADS, RANGE 90.50-91.50, LATEST ESTB. MKT. 90.50-91.00.

CUTTER 1-2 350 & UP, 5 LOADS, RANGE 101.00, LATEST ESTB. MKT. 101.00.

BULLS 500/UP, YG1, 2 LOADS, RANGE 108.00, LATEST ESTB. MKT. 108.00.

BONELESS PROCESSING BEEF/ BEEF TRIMMINGS
124 LOADS REPORTED

BONELESS PROCESSING BEEF TRIMMINGS STEADY TO 2.00 HIGHER. OFFERINGS FAIRLY LIGHT WITH DEMAND MOSTLY MODERATE. BEEF TRIMMINGS LOWER; LIGHT TO MODERATE DEMAND WITH MODERATE OFFERINGS.

90% FRESH, 24 LOADS, RANGE 132.0-135.0, WT. AVG. 134.08.

90% FROZEN, UNQUOTED.

85% FRESH, 2 LOADS, RANGE 128.0, WT. AVG. 128.00.

85% FROZEN, UNQUOTED.

75% FRESH, 3 LOADS, RANGE 104.0, WT. AVG. 104.00.

75% FROZEN, UNQUOTED.

65% FRESH, RANGE 89.0, WT. AVG. 89.00 E.

65% FROZEN, UNQUOTED.

50% FRESH, 72 LOADS, RANGE 62.00-64.00, WT. AVG. 62.62.

50% FROZEN, UNQUOTED.

50% BX, UNQUOTED.

BULL 92-94, 1 LOAD, RANGE 152.0, WT. AVG. 152.00.

75% FROZEN, UNQUOTED.

90% FRESH, 13 LOADS, RANGE 132.0-134.0, WT. AVG. 133.69.

90% FROZEN, 1 LOAD, RANGE 134.5-133.0, WT. AVG. 134.50.

85% FRESH, UNQUOTED.

85% FROZEN, UNQUOTED.

75% FRESH, UNQUOTED.

75% FROZEN, UNQUOTED.

65% FRESH, UNQUOTED.

65% FROZEN, UNQUOTED.

BULL 92-94 UNQUOTED.

CAF NORTHEAST AREAS

90% FRESH, 4 LOADS, RANGE 133.0, WT. AVG. 133.00.

90% FROZEN, UNQUOTED.

85% FRESH, 4 LOADS, RANGE 125.0-125.5, WT. AVG. 125.25.

85% FROZEN, UNQUOTED.

75% FRESH, UNQUOTED.

75% FROZEN, UNQUOTED.

65% FRESH, UNQUOTED.

65% FROZEN, UNQUOTED.

ABCDE AFTER QUOTES REPRESENTS DAYS SINCE LAST ACTUAL MARKET TEST. QUOTES ARE DROPPED AFTER 5 DAYS OF NO TEST OR BEFORE IF THEY NO LONGER REFLECT CURRENT MARKET CONDITIONS

Westminster Livestock Auction

Hagerstown, Md.

Tuesday, Feb. 19, 1991

Report supplied by auction

SLAUGHTER COWS: UTILITY 51.00-56.00; **HIGH DRESSING** 56.00-59.50; **CANNERS** 47.00-51.00; **SHELLY** 47.00 DOWN.

BULLS: 1100-2200 LBS. YG#1 62.00-67.50, 1 AT 70.25; **YG#2** 59.00-62.00.

8FED STEERS: CHOICE 1200-1500 LBS. 77.00-80.00; **LOW CHOICE** 73.00-76.00; **HIGH CHOICE HOLSTEINS 1500-1600 LBS.** 70.00-74.00.

FED HEIFERS: LOW CHOICE 900-1100 LBS. 68.00-70.50.

VEAL CALVES: 1 PRIME 365 LBS. AT 117.00; **HIGH CHOICE 300-380 LBS.** 105.00-109.00; **CULLS 80-120 LBS.** 55.00-63.00; **50-80 LBS.** 47.00-55.00; **WEAK AND ROUGH 45.00 DOWN.**

FARM CALVES, HOLSTEIN BULLS: #1 90-125 LBS. 125.00-141.00; **#2 75-95 LBS.** 100.00-130.00; **HOLSTEIN HEIFERS 100-120 LBS.** UP TO 142.00; **BEEF X BULLS UP TO 127.00.**

BUTCHER HOGS: US#1 AND 3 215-245 LBS. 50.50-51.25; **260-300 LBS. #2 AND 3** 43.00-46.50; **190-210 LBS.** 46.00-48.00.

SOWS: 300-500 LBS. 42.00-45.00; **500-700 LBS.** 43.00-46.25.

BOARS: 300-650 LBS. 36.75-38.50.

STOCK CATTLE: STEERS 200-400 LBS. 90.00-113.00; **400-600 LBS.** 85.00-99.00; **600-800 LBS.** 70.00-82.00;

800-950 LBS. 69.00-77.00.
HEIFERS: 200-400 LBS. 80.00-97.00; **400-600 LBS.** 72.00-85.00; **600-700 LBS.** 70.00-75.00.

BULLS: 200-400 LBS. 78.00-105.00; **400-600 LBS.** 75.00-91.00; **600-800 LBS.** 65.00-75.00; **800-950 LBS.** 58.00-71.50.

LAMBS: CHOICE WOOLED 100-120 LBS. 48.00-51.00; **60-80 LBS.** 57.00-62.00; **NEW CROP 60-80 LBS.** 73.00-79.00.

SHEEP: 15.00-24.00.

GOATS: LARGE 65.00-80.00; MEDIUM 40.00-60.00; SMALL 30.00-40.00.

PIGS AND SHOATS, BY THE HEAD: 20-30 LBS. 27.00-32.00; **35-45 LBS.** 29.00-33.00; **50-70 LBS.** 40.00-55.00; **BY THE POUND, 5 HEAD 69 LBS.** AT 75.00; **100-130 LBS.** 44.00-54.00; **160-190 LBS.** 43.00-45.00.

STOCK BOARS: 180-250 LBS. 40.00-42.50.

Carlisle Livestock Market

Carlisle, Pa.

Tuesday, Feb. 19, 1991

SLAUGHTER STEERS: SELECT 72.00-75.00, **STANDARD** 62.50-70.25.

SLAUGHTER HOLSTEINS: CHOICE 68.50-75.00.

SLAUGHTER HEIFERS: SELECT 74.00-74.75; **LIGHTS** 68.50-71.50.

SLAUGHTER COWS: STRONG DEMAND EARLY BIRD PENS FIRM \$3.00 HIGHER, **BREAK. UT. & COMM.** 53.00-55.85, **CUTTER & BONING UT.** 50.00-55.00, **CANNER & LOW CUTTER**

47.00-49.85, **BIG MIDDLE** 45.00-51.50, **SHELLY** 44.00 & DOWN.

SLAUGHTER FAT BULLS: YIELD GRADE NO. 2 63.75.

FEDER CATTLE: FDR. STEERS (650-750 LBS.) MEDIUM #1 80.50-83.50; **FDR HEIFERS (ALL WTS.) MEDIUM #2** 65.00-76.00.

VEAL CALVES: STRONG DEMAND; CHOICE 100.00-127.00, **GOOD** 88.00-99.00, **STANDARD** 55.00-80.00; **COUPLE LIGHT/WEAK** 54.00 & DOWN.

FARM BULLS: 125.00-148.00, FARM HEIFERS 100.00-148.00.

HOGS: BARROWS & GILTS- 2.00 LOWER; US NO. 1-3 (210-260 LB.) 50.50-51.75, **#2 AND 4** 380-420 LBS. 38.00-46.00.

SOWS: ACTIVE 1.00 HIGHER. OVER 450 LBS. 45.75-47.50; **UNDER 450 LBS.** 42.75-45.00.

BOARS: HEAVY 38.50-39.75; UNDER 300 LBS. TO 46.00.

FEDER PIGS (BY THE HEAD) ACTIVE; 15-25 LBS. 23.00-31.00; **30-50 LBS.** 30.00-52.00.

SHEEP: EWES 15.00-32.00.

LAMBS: CHOICE (20-40 LB.) 102.50-125.00, **CHOICE (65-90 LB.)** 70.00-86.00, **GOOD AND CHOICE 40-60 LBS. AT 77.50-88.00; GOOD AND CHOICE 100-110 LBS.** 52.50-57.50.

GOATS: (BY THE HEAD) SM./MED. 31.00-57.50.

SALE EVERY TUESDAY EVENING 5:00 P.M. RABBITS POULTRY & EGGS 7:00 P.M. LIVESTOCK.

CRIPPLED AND DISABLED COWS, STEERS & BULLS

Slaughter Under USDA Inspection

FREE CALL

1-800-234-COWS (2697)

215-286-9400

Wayne Taylor

Lebanon, Berks, Lancaster & Chester Co.

HAY, STRAW & GRAIN SALE

Every Thursday at 1 p.m. Auction will continue all year long

Vintage Sales Stables, Inc.

(Rt. 30, 10 miles east of Lancaster in Paradise, PA)

For info. L. Robert Frame, Sr. president
717-442-4181 business
215-458-8518 home Glenn S. Frame Mgr.

Estimated Daily Livestock Slaughter

Under Federal Inspection

Feb. 20, 1991

	CATTLE	CALVES	HOGS	SHEEP
WED., 2/20/91 (EST)	120,000	7,000	329,000	24,000
WEEK AGO (EST)	125,000	7,000	326,000	24,000
YEAR AGO (ACT)	120,000	8,000	331,000	23,000
WEEK TO DATE (EST)	337,000	21,000	909,000	62,000
SAME PD LT WK (EST)	363,000	22,000	941,000	67,000
SAME PD LT YR (ACT)	341,000	22,000	932,000	68,000

****REVISED SHEEP SLAUGHTER TUES., FEB. 19, 1991: 22,000.

HORSE SALE
FRI. MARCH 1, 1991
10:00 A.M.
Tack 9:00 A.M.

NEW HOLLAND SALES STABLES INC. THE ACTION AUCTION

TOP LOAD
New York State Cows
Purebreds and Grades
Fresh and Springers
Dairy Sale Wed. Feb. 27

LIVESTOCK IS OUR ONLY BUSINESS

MONDAY

SLAUGHTER HOGS

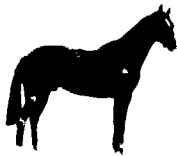


EARLY BIRD HOG SALE
8:00 A.M.

Sell Your Hogs At New Holland Sales Stables, Inc. See them weighed, sold and pickup your check.

10:00 AM

HORSES MULES



1:30 PM

BEEF SALE



SHEEP



CALVES

WEDNESDAY

DAIRY 11:00 AM COW SALE 12:00 NOON COWS



We have the usual run of 50 to 100 Heifers, all ages. Loads of fresh cows and springers from our regular shippers. Also some local fresh cows and springers.

1:30 P.M.
FEEDER PIG SALE



Pigs are accepted after 6:30 A.M. State graded from 8 to 12 Dairy Barn and Feeder Pig Barn are cleaned and disinfected weekly for your protection.

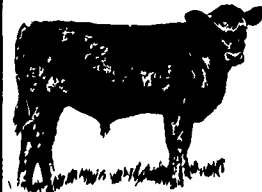
THURSDAY

Beef Auction 10:00 A.M.

BULLS STEERS BEEF COWS



STOCKERS & FEEDERS



12:30 P.M.

SHEEP GOATS CALVES



NEW HOLLAND SALES STABLES, INC.

12 Miles East of Lancaster Off Route 23, New Holland, Penna.

MANAGERS

Norman & David Kolb - 717-397-5538

Field Representatives

Luke Eberly - 215-267-6608 738-1865

Homer Eberly - 215-267-3047

Sale Barn Officer Manager
Roger Floyd - 717-354-4341

Order Buyer

Paul Good - 215-445-6662

Feeder Pig Representative
Mel Hoover - 717-354-8397