



New Holland Hogs
Feb. 18, 1991

TODAY 671
LAST MONDAY 628
LAST YEAR 1095
TREND: Compared to last Monday barrows and gilts steady to 1.00 lower.
BARROWS AND GILTS: US 1-2 210-250 lb 53.00-54.00.
US 1 One lot 235 lb 55.50.
US 1-3 210-260 lb 52.00-52.75.

Lancaster Hogs

Lancaster Stockyards
Sat., Feb. 16, 1991
Report supplied by auction

650 HEAD.
US 1 215-245 LBS. 54.50-56.25.
US 1-2 215-245 LBS. 53.00-54.50.
US 1-3 215-245 LBS. 52.00-53.00.
US 2-4 215-255 LBS. 51.00-52.00.
HEAVY HOGS: 255-270 LBS. 50.00-51.00; 300-350 LBS. 43.50-45.00.
GOOD SOWS: 42.00-44.50.
MEDIUM SOWS: 39.00-42.00.
THIN SOWS: 35.00-39.00.
HEAVY BOARS: 37.00-38.25.
LIGHT BOARS: 37.00-38.75.

Peoria Hogs

Peoria, IL
Feb. 21, 1991
HOGS: 1500 TRADING SLOW. BARROWS AND GILTS .50 TO MOSTLY 1.00 LOWER COMPARED WITH WEDNESDAY.
US 1-3 220-250 LBS. 51.50-52.00, 85 HEAD 52.50 2-3 230-260 LBS. 51.00-51.50 260-280 LBS. 49.00-51.00
SOWS: UNDER 500 LBS. .50 TO 1.50 LOWER; OVER 500 LBS. 2.00 TO 3.50 LOWER, INSTANCES 4.00 LOWER. 14 %
US 1-3 325-400 LBS. 44.00 400-500 LBS. 45.00 500-650 LBS. 48.00-48.50, FEW LATE 46.00
BOARS: OVER 350 LBS. 39.00 UNDER 350 LBS. 42.50-43.00
HOG 214
HC,HD,HE 5150-5250; HI,HJ,HK 5150-5200; HQ 5100-5150; HR 5000-5100; VV 4400-4400; WW 4500-4500; XX,YY,4600-4850; ZZ 3900-3900.

New Holland Feeder Pigs

Feb. 20, 1991
TODAY 730
LAST WEDNESDAY 917
LAST YEAR 701
TREND: Compared to last Wednesday feeder pigs 2.00 to 5.00 lower, instances 10.00 lower on weights over 50 lb. All pigs weighed on arrival and sold by the hundred weight.
GRADE HEAD WEIGHT PRICE US 1-2 90 22-29 142.00-162.00. 44 30-39 138.00-148.00. 32 42 132.00-134.00. 37 48-49 118.00-120.00. 68 51-56 114.00-120.00. 114 62-68 92.00-106.00. 26 74-82 85.00-88.00.
US 2 20 25 125.00-130.00. 39 32-38 120.00-131.00. 50 41-45 120.00-124.00. 64 53-56 108.00-111.00. 15 60-67 85.00-86.00. 32 72-78 79.00-80.00.
US 2-3 24 32-36 102.00. 14 44 78.00

Indiana Hogs
Louisville, KY
Feb. 20, 1991

HOGS 51
BARROWS AND GILTS: MOSTLY STEADY. DEMAND MODERATE.
US 1-2 220-260 LBS. 50.25-51.50; PLANT DELIVERED TO 52.00.
210-220 LBS. 48.50-50.00
US 1-3 220-260 LBS. 49.00-50.50 38.00-43.00, FEW DOWN TO 35.00.
500-650 LBS. 40.00-44.00, FEW 46.00-48.00.

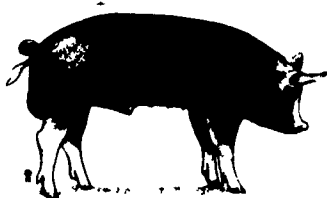
**INDIANA DIRECT RECEIPTS: TUESDAY'S ACTUALS 18,100 TODAY'S ESTIMATE 19,000 WEDNESDAY WEEK AGO 19,200 WEDNESDAY YEAR AGO 16,900 WEEK TO DATE 61,000 SM PD WEEK AGO 61,500 SM PD YEAR AGO 55,400
**RECEIPTS FOR A YEAR AGO WILL NOT COMPARE TO THIS WEEK DUE TO A CHANGE IN THE REPORTING BASE.

CARCASS BASIS HOG PRICES: HOT WEIGHTS: PLANT DELIVERED. 160-185 LBS. BARROWS AND GILTS: STEADY TO .68 LOWER.

US 1 (BACKFAT THICKNESS .50-.79 IN.) 72.41 TO 75.10 US 1 (BACKFAT THICKNESS .80-.99 IN.) 70.62 TO 72.41 US 2 (BACKFAT THICKNESS 1.00-1.24 IN.) 69.53 TO 71.11 US 3 (BACKFAT THICKNESS 1.25-1.49 IN.) 68.53 TO 69.53 US 4 (BACKFAT THICKNESS 1.50-1.79 IN.) 64.55 TO 68.53
ACTUAL PAYING PRICE MAY NOT ALWAYS BE WITHIN PRICE RANGES AS ADJUSTMENTS ARE MADE FOR SUPERIOR OR INFERIOR MUSCLING AND BACKFAT THICKNESS WITHIN THE GRADES.

State Graded Feeder Pig Sale

at Westminster Livestock Auction
Feb. 15, 1991
729 PIGS, 2 WEEKS AGO 739. PIGS UNDER 60 LBS. 15.00-25.00 HIGHER. OVER 60 LBS. 5.00-10.00 HIGHER. ALL PRICES ON A PER HUNDRED WEIGHT BASIS.
GRADE 1 AND 2: 24 HEAD 28-37 LBS. 137.00-155.00; 175 HEAD 42-49 LBS. 125.00-146.00; 192 HEAD 52-59 LBS. 111.00-125.00; 130 HEAD 61-69 LBS. 104.00-111.00; 54 HEAD 74-77 LBS. 100.00-108.00; 60 HEAD 81-82 LBS. 99.00-102.00; 24 HEAD 88 LBS. 91.00; 17 HEAD 98 LBS. 82.00; 4 HEAD 101 LBS. 77.00.
GRADE 2: 9 HEAD 34 LBS. 146.00; 13 HEAD 47-52 LBS. 100.00-125.00.
NEXT GRADED SALE MARCH 1.



Green Dragon Hay

Ephrata, Pa.
Friday, Feb. 15, 1991
Report Supplied by Auction
TOTAL LOADS: 123.
MIXED HAY: 59.00-140.00.
ALFALFA: 71.00-147.00.
TIMOTHY: 77.00-112.00.
CLOVER: 75.00.
MEADOW GRASS: 48.00-100.00.
STRAW: 50.00-85.00.
EAR CORN: 74.00-79.00.
OATS: 1.95-2.10 BU.
FIREWOOD: 27.00-115.00 LOAD.

Belleville Hay

Belleville, PA
Wednesday, Feb. 20
Report Supplied by Auction
TOTAL LOADS: 49 LDS. HAY.
ALFALFA: 85.00-115.00.
MIXED HAY: 40.00-75.00.
STRAW: 9 LOADS, 50.00-72.50.
EAR CORN: 5 LOADS, 65.00-77.50.
OATS: 3 LOADS, 1.50-1.80 BU.

Good's Hay

Leola, Pa.
Wed., Feb. 20, 1991
Report Supplied by Auction
82 LOADS.
ALFALFA: 50.00-137.00.
MIXED HAY: 50.00-135.00.
TIMOTHY: 68.00-91.00.
STRAW: 55.00-92.00.
CORN: 74.00-78.00.
GRASS: 70.00.
OATS: 1.95-2.15 BU.
CLOVER: 80.00.

Dewart Hay

Dewart, PA.
Monday, Feb. 18, 1991
Report Supplied by Auction
23 LOADS OF HAY, 35.00-125.00.
STRAW: 5 LOADS, 56.00-66.00.
WOOD: 18 LOADS, 20.00-56.00 LOAD.
CORN: 8 LOADS, 55.00-61.00.
OATS: 2 LOADS, 1.42 AND 1.60 BU.

Vintage Hay

Paradise, PA
Thurs., Feb. 21, 1991
Report Supplied by Auction
27 LOADS.
ALFALFA: 65.00-175.00.
STRAW: 71.00-80.00.
MIXED HAY: 67.50-90.00.
GRASS HAY: 74.00-93.00.

Regional Hay

Feb. 19, 1991
Eastern, Pa.
HAY & STRAW MARKET FOR EASTERN PA - (ALL HAY NO. 2 AND BETTER, PRICES PAID BY DEALERS AT THE FARM & PER TON). HAY & STRAW STEADY TO WEAK.
ALFALFA 70.00-100.00; MIXED HAY 55.00-90.00; TIMOTHY HAY 55.00-85.00; STRAW 35.00-75.00; MULCH 20.00-35.00.
SUMMARY OF LANCASTER CO. HAY AUCTIONS FOR WEEK ENDING

2/15/91. PRICES PER TON: LOADS: 351 HAY, 96 STRAW, AND 24 EAR CORN.
ALFALFA 78.00-147.00; MIXED HAY 53.00-144.00; TIMOTHY HAY 70.00-124.00; STRAW 45.00-90.00; EAR CORN 69.00-79.00.

SUMMARY OF CENTRAL PA. HAY AUCTIONS FOR WEEK ENDING 2/15/91. PRICES PER TON: LOADS: 230 HAY, 35 STRAW & 17 EAR CORN.
ALFALFA 70.00-150.00; MIXED HAY 40.00-95.00; TIMOTHY HAY 41.00-80.50; STRAW 40.00-80.00; MULCH 67.00-85.00.

Kirkwood Hay Auction

Kirkwood, Pa.
Tuesday, Feb. 19, 1991
Report Supplied by Auction
52 LOADS OF HAY.
MIXED HAY: 1ST CUTTING 61.00-90.00, 2ND CUTTING 54.00-75.00.
TIMOTHY: 109.00-126.00.
ALFALFA: 1ST CUTTING 62.00-122.00, 2ND CUTTING 98.00-120.00, 3RD CUTTING 50.00-141.00.
CLOVER: 1ST CUTTING 63.00-98.00, 2ND CUTTING 67.00-70.00.
GRASS: 86.00-106.00.
OAT HAY: 59.00-65.00.
WHEAT STRAW: 88.00-91.00.
OAT STRAW: 48.00.
EAR CORN: 76.50.
PAPER BEDDING: 40.00.
WOOD: 55.00 LOAD.
POSTS: 2.25 EACH.

North Jersey Market

Hackettstown, N.J.
Tuesday, Feb. 19, 1991
Hay-Straw & Grain Report
MIXED HAY: 6 LOADS, 1.00-2.30 BALE.
TIMOTHY HAY: 1.20 BALE.
GRASS HAY: 5 LOADS, 1.30-1.60 BALE.
STRAW: 2 LOADS, 1.50 BALE.
SHELLED CORN: 3 LOADS, 4.25-6.00 BAG.
CRACKED CORN: 6.50 BAG.
OATS: 2 LOADS, 5.25 BAG.
20 LOADS TOTAL.

Keister's Hay

Middleburg, PA
Tuesday, Feb. 19
Report supplied by auction
79 LOADS HAY.
ALFALFA: 110.00-125.00.
MIXED HAY: 40.00-175.00.
MULCH HAY: 22.50-37.50.
STRAW: 42.50-65.00.
EAR CORN: 72.50-87.50.
OATS: 1.60-1.75 BU.
FIREWOOD: 17.50-55.00 LOAD.

Frederick Co.

Hay
Buckeytown, Md.
Thursday, Feb. 21, 1991
Report Supplied by Auction
37 LOADS; MARKET ABOUT

STEADY; WEATHER SUNNY.
ALFALFA: 3 LOADS FAIR TO GOOD 80.00-126.00, 3 LOADS FAIR, SOME DAMAGED 40.00-57.00.
ALFALFA MIX: 2 LOADS FAIR 65.00-71.00.
TIMOTHY: 6 LOADS FAIR TO GOOD 76.00-80.00, 8 JUST FAIR 60.00-73.00.
MIXED HAY: 3 LOADS BIG BALES 40.00-50.00.
ORCHARD GRASS: 2 LOADS, 1 FANCY 60.00-90.00.
CLOVER: 1 LOAD, 77.00.
STRAW: 4 LOADS WHEAT 60.00-73.00.
OAT STRAW: 1 LOAD, 68.00.
FIREWOOD: 3 LOADS HARDWOOD 63.00 CORD.

Westminster Hay

Westminster, Md.
Tuesday, Feb. 19, 1991
Report Supplied by Auction
TOTAL LOADS: 36.
ALFALFA: 65.00-107.50, 1.90-2.80 BALE.
ALFALFA MIX: 65.00.
TIMOTHY: 49.00-70.00, 1.25-2.30 BALE.
TIMOTHY MIX: 62.50, 1.20-1.30 BALE.
TIMOTHY ROUND BALES: 15.00-20.00 EACH.
ALFALFA ROUND BALES: LITTLE MOLDY 11.00 EACH.
GRASS HAY: 49.00-50.00, .80 BALE.
OATS: 1.80 BU.
STRAW: 50.00, 1.10-1.80 BALE.
WOOD: 60.00 FULL CORD.

Greencastle Hay Market

Hay & Straw
Feb. 14 & 18, 1991
29 LOADS.
ALFALFA (GOOD) 105.00-130.00/TON.
ALFALFA (FAIR) 75.00-104.00/TON.
ALFALFA MIXED 70.00-95.00/TON.
TIMOTHY HAY 65.00-79.00/TON.
MIXED HAY 50.00-75.00/TON.
BROOM GRASS 60.00-70.00/TON.
STRAW- WHEAT 75.00-80.00/TON.
FIREWOOD 22.00-29.00/A LOAD.

Leinbach's Hay

Shippensburg, PA
Feb. 16 and 19
Report Supplied by Auction
TOTAL LOADS: 79.
ALFALFA: 81.00-155.00.
MIXED HAY: 36.00-133.00.
TIMOTHY: 38.00-87.00.
CLOVER: 47.00.
ORCHARD GRASS: 42.00-45.00.
BROME GRASS: 37.00-70.00.
STRAW: 50.00-80.00.
EAR CORN: 71.00-73.00.
MULCH 30.00-33.00.
FIREWOOD: 10.00-35.00 PICK-UP LOAD.

Walter M. Dunlap and Sons offers all cattle feeders two marketing days - Give us a call for advice and marketing conditions.

MONDAYS OR WEDNESDAYS

Consign With Us - For The Marketing Edge

Consign Your Beef Cows
Mondays and Wednesdays
No Waiting To Unload - Good Weight Conditions

Next Feeder Cattle Sale
Friday, March 8 - 11:00 A.M.

Walter M. Dunlap and Sons
Lancaster Stockyards
Tel. (717) 397-5136

An Old Line Commission Firm Keeping
Abreast With The Times

MESSICKS CONSIGNMENT SALE

Sat., March 2
9 AM
See Our Ad
In Sec. E
For Details

KIRKWOOD HAY AUCTION

Hay, Straw and Grain Auction
EVERY TUESDAY
12:00
Located Rt. 472 5 miles south of Quarryville or 6 miles north of Oxford corner of Rt. 472 and Noble Road.

Lloyd H. Kreider,
Auctioneer
AU-000513L
No out of state checks

In this issue

Five Sections

FEATURES

- ABC Has Good Year..... A26
- CRP Signup..... A31
- Cross Stitch Cows..... B16,B 2
- Be Well Liked..... B14
- Starting A Greenhouse..... B15
- Young Farmers..... D 4
- Economic Predictions..... D10

HOME AND YOUTH

- Home On The Range..... B 6
- Cook's Question Corner..... B 8
- Kid's Korner..... B10
- Taking Time..... B11
- Farm Women Societies..... B13
- FFA Happenings..... B21

DAIRY

- DHIA Focus..... A18
- Maryland DHIA..... A35
- Chester Co. DHIA..... D16
- Bedford Co. DHIA..... E20
- Columbia Co. DHIA..... E21

COLUMNS

- Now is the Time..... A10
- On Being A Farm Wife..... B 3
- Microwave Minutes..... B 4
- Have You Heard..... B 5
- Ida's Notebook..... B18
- Poultry Pointers..... D 8
- Swine Management..... D 7
- Foraging Around..... A34

DEPARTMENTS

- Editorial..... A10
- Farm Calendar..... A10
- Farm Forum..... A10
- Classified Ads..... B22,C 8
- Business News..... D 6
- Mailbox Markets..... D19,E2
- Sale Reports..... E11
- Public Auction Register..... E13