

35 TRUCKS & TRAILERS

(4) Michelin 205/60R15 radial tires, \$100. 717/653-8054 or 285-3208.

6000 Gallon Heli farm pickup trailer, \$7,200. 717/867-2995.

'87 Ford 1 ton cattle truck, very nice \$800. 301-898-7428.

'89 International 1800 Load Star, V6 Detroit, Allison Trans., twinscrew, good rubber, 15' grain dump, \$4,800. 301/223-6364.

(7) LT225/75R16 Firestone 8 ply radial tires, each \$35 or all \$200. 717/653-8054 or 285-3208.

'80 Ford F250, 1/2 ton, 4x4, 302, 4 spd., PS, PB, AM-FM, lock-out hubs, 91,000 miles, \$1,975. 717-733-2873

'80 Magirus by Iveco, diesel, cabover, 18' w/ sides, 29,800 GVW, \$4,000 '83 1 Ton Chevy, walk-in covered utility, 4sd, \$2,800. '83 1 Ton Ford, flat bed, auto., 351 Winsor, \$4,000. 717/762-6415.

'85 Chevy Scottsdale C10, HD 1/2 ton pickup, 305 auto., PB, PS, AM-FM, 42,000 miles, 1 owner, excellent condition, \$5,975. 717-733-2873

8' Reading Walk In Utility Beds for use on Dual Wheeled Pickups. Rack over top for pipe or supplies. Call Bill (717)545-4235.

'90 Ford F250, HD, 1/2 ton w/Stahl utility body, 351 EFI, 5 spd., PS, PB, AM-FM, 8,600 GVW, 3,000 miles w/balance of factory warranty, dark blue, like new, \$11,995. 717-733-2873

Air Tire Forklift, 4,000 & 5,000 lbs., runs good. 215-965-6857

Bedford County, 1987 20' gooseneck trailer, 2 axle w/ brake, 2" dry oak floor, stake pockets, inspected and licensed for 10,000 GVW \$1850. Call 814-783-3938 late evenings.

B-Model Mack Dump Truck, single axle, 673 diesel, duplex, recent body, G.C. \$5000 OBO. 717/679-2531.

'89 Chevy 2500 HD 1/2 ton, 4x4, 350 FI., auto., PB, PS, AM-FM stereo, limited slip differential, 8,600 GVW, 9,000 miles w/balance of factory warranty, \$12,900. 717-733-2873

'89 Ford E250 Super Cargo Van, 300 EFI, auto., PB, PS, air, 8,100 GVW, charcoal, 32,000 miles, excellent condition, \$9,950. 717-733-2873

'89 Ford F150 HD, 1/2 ton, 300 EFI, 4 spd., PS, PB, AM-FM, dual tanks, 6,250 GVW, excellent condition, \$6,950. 717-733-2873

'89 GMC 2500, HD, 1/2 ton, 4x4, utility body, 350 FI., auto., PB, PS, air, AM-FM, 8,600 GVW, 9,000 miles, white, excellent condition, \$12,900. 717-733-2873

'87 Chevy C20 HD, 1/2 ton, 350 FI., auto., PB, PS, 8,600 GVW, 38,000 miles, excellent condition, \$7,900. 717-733-2873

'87 Chevy C20 HD, 1/2 ton, 4x4, 350 FI., auto., PB, PS, lock-out hubs, AM-FM, dual tanks, 8,600 GVW, 36,000 miles, excellent condition, \$8,975. 717-733-2873

'87 Chevy Scottsdale C20 Suburban, 8 passenger, 454 auto., PB, PS, air, towing package, 44,000 miles, excellent condition, \$9,950. 717-733-2873

'87 Dodge D250 HD, 1/2 ton, 4x4, 360, auto., PB, PS, AM-FM, Michelin radials, 8,510 GVW, 25,000 miles, excellent condition, \$8,975. 717-733-2873

'87 GMC 3500, 14' Custom man 1st floor High 6' van, 350, auto., PB, PS, 8,000 original miles, excellent condition, \$9,950. 717-733-2873

'88 Chev. Blazer 4x4, 25,000 mi., complete body, burned out, 350 AT, AC, rally wheels, \$2,000. 717/437-2212.

'88 Chevy Cheyenne 1500 1/2 ton, 4x4, 4.3 V6, HD, 4 spd., PS, PB, blue, 18,000 miles, like new, \$8,975. 717-733-2873

'88 Ford F250, 1/2 ton, 300 EFI, HD, 4 spd., PS, PB, AM-FM, dark blue, \$7,650. 717-733-2873

1988 Chev. C30 dual wheel truck with 1979 custom 12' aluminum body, gold cab \$2850. York Co. 717-938-6656.

Mack tandem R model diesel w/20' flatbed, new wood flooring, bed will dump or scissors lift to 18' \$6950. 717-938-6656; 814-263-4190.

Diamond Rio conventional cab and hood, 1974 model C116, both for \$800. (717)235-6579.

Dismantling IH School Buses, complete buses for parts. IH R190, 5 spd. transmission. Everything priced reasonable. 717/386-5696.

1989 Chevy C30, 1/2 ton, 350, auto., PB, PS, AM-FM, 8,600 GVW, 61,000 miles, charcoal, good condition, \$5,600. 717-733-2873

'85 Ford F150 4x4, excellent condition, AM-FM, AAC, P/S, P/B, bedliner, 57,000 miles, \$6,000 OBO. (215)932-0770.

Advertiser: Evening, Saturday, February 28, 1991-837

'89 GMC Sierra SLX 1500, extended cab, 305 EFI, auto., PB, PS, air, AM-FM cassette stereo, 6,200 GVW, 23,000 miles, \$10,900. 717-733-2873

FOR SALE: New 16' aluminum Hovey grain body, 48" sides, double acting tailgate. 717-867-5222

FOR SALE: Two gooseneck trailers, 4 wheel, enclosed van style, \$1,000 ea. 201-699-9294.

Ford 1980 F-350 4x4 heavy duty pickup, new radials, good condition, \$3,200. Ford 1979 LN9000 tractor, single axle, wet line, radial tires, good condition, \$3,900 Call 703/777-5134 ask for Patrick 9-5.

FOR SALE: 1984 Ford 250, 6.9 del., 2WD, automatic, loaded, newly rebuilt engine 10,000 miles ago, Texas truck, excellent condition \$5800 firm. 717-539-2614.

FOR SALE: Diamond Rio liquid manure truck, 4400 gallon \$6500. 215-286-9708.

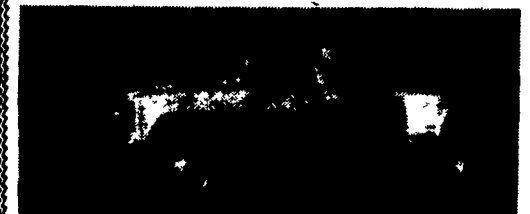


1974 Ford 15 ft. Grain Dump
New Motor 5+2 900 Tires

1974 GMC 15 Ft. Grain Dump
New Dump, 4+2 900 Tires, Both New Rear Grain Barn Door Doors

1974 Ford 19 Ft. Roll Back
1000 Tires 5+2

All Trucks Coon Gond.
Take Your Pick **\$5,450**
717/642-8677

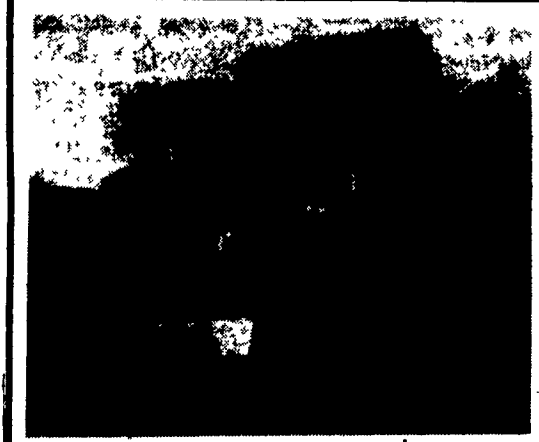


1988 GMC 3500 dually, SLX Sierra w/Extended Cab, 454 F.I., 4 Speed Air, Full Bed Liner, Gooseneck And Class IV Frame Hitch. Brake Controller and Dual Electrical Plugs. Super Clean and only 9,000 Original Miles, Anxious To Go To Work! \$14,995.

Trailer Enterprises
(717) 597-5611

- 1989 Chevy Celebrity 4 Dr, V6, AT, AC, CR, AM-FM, 55,000 Mi.....\$6,800
- 1989 Buick Skylark 4 Dr., Quad 4, AT, AC, Tilt CR, AM-FM Cass., 59,000 Mi.....\$6,600
- 1989 Ford Aerostar XLT 7 Pass., V6, AT, AC, AM-FM Cass., 59,000 Mi.....\$7,900
- 1989 Chevy Cavalier 2 Dr., 4 Cyl., 5 Spd., AM-FM, 21,000 Mi...\$5,900
- 1988 Ford Econoline 250XL Maxi Panel Van, V8, AT, AM-FM 36,000 Mi.....\$8,800
- 1988 Dodge Ram 350 12 Pass., V8, AT, Dual AC, CR, Tilt, AM-FM, 41,000 Mi.....\$8,800
- 1988 Chevy Celebrity CL, 4 Dr., V6, AT, AC, CR, AM-FM, 45,000 Mi.....\$5,900
- 1987 Dodge Caravan LE, 7 Pass., 2.6 4 cyl. AT, Loaded, 64,000 Mi.....\$7,600
- 1987 Chevy Sprint 2 Dr., 3 Cyl., AT, AC, AM-FM, 52,000 Mi.....\$2,900
- 1986 Dodge Caravan LE 7 pass., 2.6 4 cyl. AT, loaded, 54,000 Mi.....\$7,600
- 1986 Chevy Spectrum, 4 Dr., 4 Cyl., AT, AM-FM, 60,000 Mi.....\$2,900

Brubaker's Auto Sales
Myerstown, PA
717-866-5237



1976 GMC 6000 Grain Truck
26,000 Lbs., 14 Ft. Grain Body, 15 Ton Hoist, 5 Spd. Trans., 2 Spd. Rear, Power Steering, Brakes, Good Condition, Asking \$4,900.00

Ph. Eve. 717-786-1119

WHY NOT BUY A TWENTY YEAR TRAILER

- Kiefer Built 6'x16' Bumper Pull 4 Horse/ Stock Trailer, 7' High, Rubber Floor Mats, Fiberglass Roof, 2 In Stock, 1 With Red Roof, 1 With Blue Roof.....\$6,287
 - Kiefer Built 7'x20' Deluxe Aluminum II Gooseneck, Rubber Floor Mats, Aluminum Roof..... \$10,400
 - Feather-Lite 7'x24' Deluxe, 2 Dome Lights, 5' Tapered Nose..... \$10,915
 - Feather-Lite 7'x24' Deluxe, Vacuum Hydraulic Brakes, Full Swing Rear Gate with Half Roll Up, Front Access Door..... \$11,882
 - Feather-Lite 3 Horse Touch of Class Gooseneck, Rear Ramp, Rear Tack with Swing Out Saddle Rack, Black To Silver Rainbow Stripe, Deluxe FRP Trailer..... \$14,600
 - Feather-Lite 4 Horse All Aluminum Gooseneck, Front Tack with Saddle Racks, 5' Dressing Room, Rear Ramp, Tapered Nose with Stainless Front, Beautifully Equipped Trailer With All The Custom Features..... \$20,995
- Call for complete list of Aluminum and Steel Trailers

Hostetler Truck Bodies & Trailers
Rt. 322 Milroy, PA 17063
1-800-441-5161

SEE US FOR YOUR AXLE REPLACEMENT PARTS AND COMPLETE AXLE ASSEMBLIES



2,000-22,500 Lb. Axles & Suspensions
Metal Trailer Components
Lights & Electrical Supplies
Brakes, Tires & Wheels
Jacks, Couplers & Hitches
Hardwood Accessories & Much More


Check Our Prices On Receiver Hitches!

Buy Where The Quality Is #1 At The Right Price -

Ask For Dean At:

BINKLEY & HURST BROS. INC.

133 Rothsville Station Rd • Lititz, PA 17543
Phone. 626-4705




'81 Chevy C&C 44" CA, 350 V8, 4 Spd., 74,000 Miles, PS, PB, Dual Tanks

'88 Chevy Hi Cube, 14 Ft., 350, V8, AT, PS, PB, AC

'91 Chevy Heavy Duty 16 Ft. Stake Body, 454 V8, Automatic

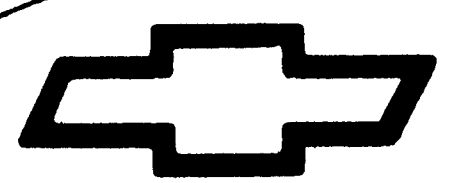
24 NEW MEDIUM'S IN STOCK



• Dumps • Stakes • Vans • Grain • 3 Low Pro's

CALL (717) 432-9611

LEFEVER BROS. DILLSBURG



Quality Dealer Since 1921
406 U.S. Route 15 • Dillsburg, PA 17019