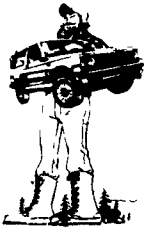


# JONES



## The GMC GIANT of Lancaster County

(717) 394-0711

1335 Manheim Pike, Lancaster

OVER 120 TRUCKS AVAILABLE!  
WITH OVER 30 PRE-OWNED 4x4's!



'85 GMC S-15  
JIMMY  
V6, AT, AC, Sierra  
Classic #6071  
Was \$8,995  
NOW \$6,550



'84 DODGE  
CARAVAN  
7 Pass., AC, AT,  
#6105  
Was \$5,400  
NOW \$3,950



'86 FORD F-150  
V8, AT, 46,000 Mi.  
#6002 Was \$9,990  
NOW \$7,650



'87 DODGE  
VAN ROYAL SE  
V8, AT, AC, Loaded,  
8 Passenger, Low Miles  
#6080 Was \$12,250  
NOW \$10,450



'75 GMC  
HEAVY HALF  
350, V8, AT, Real Nice  
#6091, Was \$2,995  
NOW \$2,000



'84 GMC PICK-UP  
V8, AT, Nice  
#6028  
Was \$6,950  
NOW \$4,975



'85 GMC  
4x4 PICKUP  
High Sierra, V8, AT,  
Nice #6025  
Was \$8,400  
NOW \$5,990



'88 CHEVY  
EXTENDED CAB  
Silverado, V8, AT,  
AC, Loaded #6043  
Was \$11,495  
NOW \$9,950



'87 CHEVY  
4x4 PICKUP  
Silverado, V8, AT,  
AC #6038  
Was \$9,450  
NOW \$7,590



'83 FORD  
BRONCO 4x4  
V8, AT, AC  
#6069  
Was \$4,995  
NOW \$3,150



'85 CHEVY 1/2 TON  
SUBURBAN  
V8, AT, AC, New Engine,  
#6066  
Was \$7,450  
NOW \$6,250



'82 FORD  
F-150 XLT  
V8, AT, AC, #6041  
Was \$3,995  
NOW \$2,575



'87 FORD  
F-250 4x4  
XLT, V8, AT, Nice  
#6089  
Was \$10,995  
NOW \$9,750



'78 DODGE  
4x4 PICKUP  
4 Spd., V8, 73,000 Original  
Miles #6095  
Was \$3,995  
NOW \$2,600



'88 CHEVY  
SUBURBAN 4x4  
V8, AT, AC, Loaded  
#5553  
Was \$14,900  
NOW \$11,450



'84 FORD  
F-150 4x4  
Explorer Pkg., AT, 300, 6  
Cyl., Real Nice, #6101  
Was \$6,995  
NOW \$5,550



'85 FORD  
F-250 PICKUP  
V8, AT, PS, #6078  
Was \$6,900  
NOW \$5,400



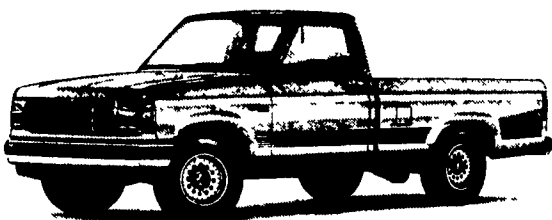
'86 FORD  
BRONCO XLT  
V8, AT, AC, Loaded,  
#5528  
Was \$11,995  
NOW \$8,500

Mark VII - Pickups - Broncos - Bronco II - Stake Body - Crew Cab -

### For All Your Farming And Recreational Transportation Needs!

Over 150 New Trucks In Stock With More Arriving Daily!

BRONCOS DIESEL PICKUPS CHASSIS CAB CARGO VANS 4x4 RANGERS PICKUPS  
SUPER CAB CREW CAB STAKE BODY BOX VANS XLT CUSTOM VANS

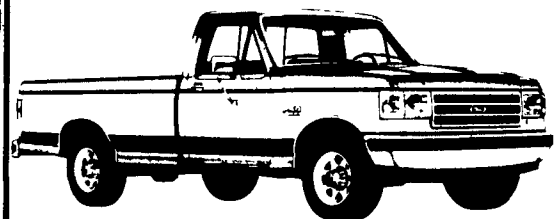


'91 FORD RANGER XLT  
4x2, Two-Tone, Manual Trans.  
\$8,499\*  
5 To Choose From!



1990 & 1991  
SUPERCABS IN STOCK  
Many Packages And  
Colors Are Now Available!!!

'91 FORD F-150 XLT  
Lariat, 4x4, 5 Spd., Loaded!  
\$13,999\*



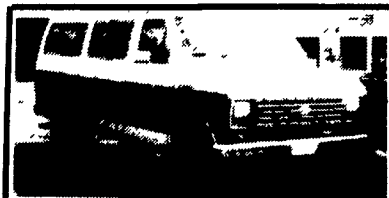
20 To Choose From! Pick Your Color!



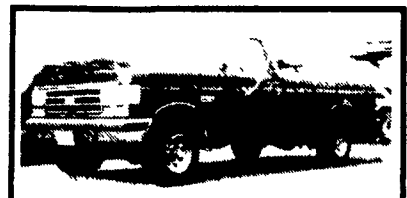
'87 FORD  
F-150 PICK-UP  
6 Cyl., 4 Spd., PS, PB, AM/FM  
St., Cap Only, 35,000 Miles  
Was \$8,899  
NOW \$6,899



'89 FORD RANGER  
4 Cyl., 5 Spd., PS, PB, AM/FM  
Stereo, XLT Trim, Two-Tone Paint  
WAS \$8,899  
NOW \$6,998



'89 FORD  
CLUB WAGON  
XLT, Two-Tone, V8, AT, PS, PB, AC,  
Tilt, Cruise, AM/FM Stereo,  
WAS \$14,899  
NOW \$13,899



'89 FORD F-150  
4x4  
XL Trim, 6 Cyl., 5 Spd., PS, PB, AC,  
Tilt, Cruise, AM/FM Stereo,  
WAS \$12,899  
NOW \$10,998

Over 30 Used Trucks In Stock. Prices Starting At \$1,995

\* Price Includes  
Applicable Rebates

Unless This Emblem Is On Your Car Or Truck You Probably Paid Too Much

# SHEEHY LEBANON

## SHEEHY FORD LINCOLN MERCURY INC.

20th & Cumberland St., Lebanon

9-9 Daily  
9-5 Sat.  
717-272-7671



Parts Dept. Open  
Daily 8-5  
Sat. 8-12  
717-273-8168

Tempo - Cougar - Continental - Town Car - 4x4 - Box Van - Rangers -

Custom Vans

XLT

Grand Marquis

Marquis

Lynx

Topaz

Diesel Pickups

Mustang

T Bird