

- '72 Chevy 10 wheeler, rebuilt 427, new tires, no bed, excellent condition
\$4,250
- '75 Ford F350, no bed,
\$1,200
- '77 Chevy ¾ ton step side
\$775
- '79 25' flatbed, 5th wheel trailer, 14,000 GVW
\$1,895
- JD B excellent condition, tin work,
\$975

Call after 7 p.m.
(717) 252-3863

9 Ton And 12 Ton Low Boy Trailer Specials

- 9 Ton 3 Axle Low Boy Special**
- * 18' Flat with 5' Beavertail and Ramps
 - * Electric Brakes All Wheels
 - * Stake Pockets With Outside Rub Rail
 - * Cleated Beavertail.....**\$4328**
- 12 Ton Bogi Axle Low Boy Special**
- * 18' Flat with 5' Beavertail and Ramps
 - * Electric Brakes all Wheels
 - * Spare Wheel and Tire
 - * Get a 12 Ton Trailer and Save the FET.....**\$4916**
- Others Available From 6 to 22½ Ton Low Boys - Electric and Air Brakes Gooseneck or Pull Type



Hostetler Truck Bodies & Trailers
Rt. 322 Millroy, PA 17063
1-800-441-5161

YOUR SOURCE FOR THESE QUALITY PRODUCTS

ARIENS • BOLENS • ECHO • PECO
OUTDOOR POWER EQUIPMENT

HILLSBORO • OWENS CLASSIC • KODIAK
FLATBED/UTILITY/AUTO/LIVESTOCK/HORSE
GOOSENECK AND STRAIGHT HITCH TRAILERS

OMAHA STANDARD • WEATHER GUARD
TRUCK AND VAN EQUIPMENT

MILWAUKEE • CENTURY • SANDBORN • WINCO
POWER TOOLS/WELDERS/AIR COMPRESSORS/GENERATORS

• NEW AND USED WHITE/OLIVER
TRACTOR PARTS •

FARMERSVILLE EQUIPMENT

R.D. 4, East Farmersville Rd., Ephrata, PA 17522
Located in the Village of Farmersville
(717) 354-2150

Looking For That Special Truck?

Just Call Our
"Computerized Vehicle
Locating Service"
IT'S FREE!!!

AUTO CONNECTIONS

717-355-0459 or
1-800-258-DEAL

We have over 3,000 cars & trucks listed -
We'd Be Glad To Help You!

COUNTRYSIDE AUTO SALES

Rt. 72 3 Miles North of Manheim

Late Model CARS AND TRUCKS

Something For Everyone! M-F 9-7 Sat. 9-4

OVER 60 CARS & TRUCKS AVAILABLE

Trades Accepted

(717) 865-3488-Home

(717) 664-2170-Office

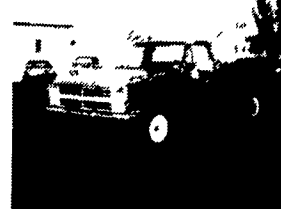


1989 C60 Low Pro

16,000 GVW, 366 Gas, 4 Speed,
2 Car Jerr-Dan Body, Wheel Lift,
21,750 Actual Owner Driven Miles
Sacrifice \$21,000 OBO
Call 302-349-4181



1988 Chevrolet Cheyenne C-1500
Fuel Inj. V6, 4 Speed, PS, PB,
Xtra Clean Inside and Out
Only \$5,800



1987 Chevrolet C-20 ¾ Ton
V8, Auto, PS, PB, 4 Very
Nice ¾ Ton Truck, A Bargain At
\$4,995



1987 Ford F-250
Fuel Inj. 6 Cyl., 4 Speed, PS,
PB, Good Condition, Very
Affordable
\$4,350



1984 F-250
6 Cyl., 4 Speed, PS, PB, Very
Good Condition, Local
1-Owner Trade
\$3,850



1987 Chevrolet C-20 4x4
V8 Automatic, PS, PB, A
Nice ¾ Ton 4x4 At A Great
Price
\$6,350



1987 Ford F-150 Supercab
Fuel Inj. V8, Auto, PS, PB,
Tilt, Cruise, AC, Full Rear
Seat, Two-Tone Finish
\$6,350



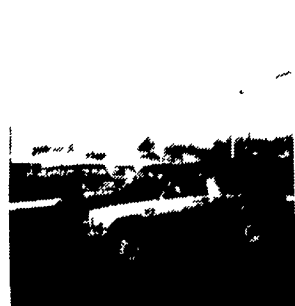
1988 GMC Sierra SLE
Extended Cab, Fuel Inj., V6, 5
Speed, PS, PB, AC, Cruise,
Full Rear Seat, Reasonably
Priced
\$8,350



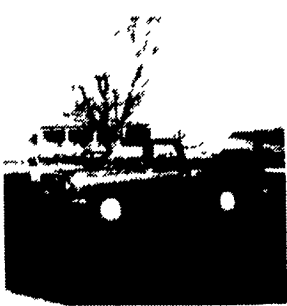
1984 Dodge 350
4 Dr. Trk, 318 Automatic
Local, 1 Owner Trade, Cheap
Only \$3,650

- 1989 Pontiac Sunbird LE, 4 Cyl., 5 Spd., AC, CR, Tilt, AM-FM, Cass., 44,000 Mi.**\$5,900**
- 1989 Ford Club Wagon XLT, 12 Pass., V8, AT, Dual AC, Loaded, 49,000 Mi. **\$11,600**
- 1989 Ford Tempo GL 4 Dr., 4 Cyl., 5 Spd., AC, Tilt, PDL, AM-FM Cass., 43,000 Mi.**\$5,900**
- 1988 Chevy Beretta CL Custom Wheels & Flaring, V6, 5 Spd., Loaded, 54,000 Mi.**\$6,900**
- 1987 Chevy Celebrity CL 4 Dr., 4 Cyl., AT, AC, CR, Tilt, PDL, AM-FM, 66,000 Mi.**\$3,900**
- 1987 Chevy Blazer Silverado 4x4, V8, AT, AC, Tilt, AM-FM Cass., 37,000 Mi.**\$9,600**
- 1987 Ford Bronco XLT 4x4, 6 Cyl., 4 Spd., Loaded, 63,000 Mi.**\$7,800**
- 1986 Isuzu Trooper II 4x4, 2 Dr., 4 Cyl., 5 Spd., AC, AM-FM Cass., 53,000 Mi.**\$5,900**
- 1986 Pontiac Fiero 4 Cyl., 5 Spd., AC, Tilt, AM-FM Cass., 46,000 Mi.**\$3,900**
- 1986 Toyota Corolla SR5, 4 Cyl., AT, AC, AM-FM Cass., 61,000 Mi.**\$5,900**
- 1979 Jeep CJ-7 Renegade Hardtop, V8, AT, AC, Sunroof, AM-FM Cass., 74,000 mi.**\$2,900**

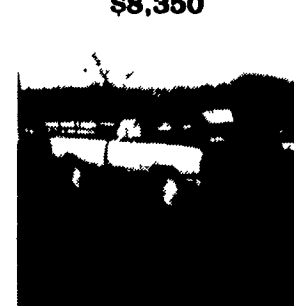
Brubaker's Auto Sales
Myerstown, PA
717-866-5237



1986 Chevy Blazer S-10
4x4, V6, 5 Speed, PS, PB,
AC, Charcoal Finish
\$5,995



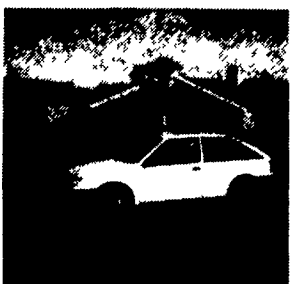
1987 Dodge 150
Slant 6, 4 Speed, PS, PB,
Shortbed, Wagon Wheels
\$4,350



1985 Dodge Royal SE 150
V8, Automatic, PS, PB, AC,
Two-Tone Black & Gold
\$3,250



1984 Dodge D-100
Slant 6, 4 Speed, PS, PB,
Prospector Package, Sale
Priced At
\$2,450



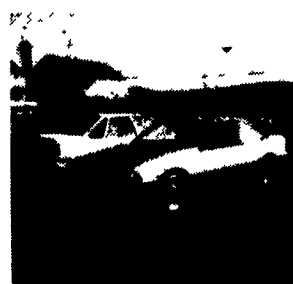
1988 Chevrolet Spectrum
4 Cyl., 5 Speed, Very Eco-
nomical, Nice Economy Car
Only \$3,650



1986 Oldsmobile Cutlass Cierra
4 Cyl. Automatic, PS, PB,
Tilt, Cruise, AC, PW, Power
Seat, Alloy Wheels
\$3,850



1987 Pontiac Grand AM LE
4 Cyl. Automatic, PS, PB,
Tilt, Cruise, Alloy Wheels,
AC
\$4,995



1988 Chevrolet Cavalier
Fuel Inj, 4 Cyl., 5 Speed,
AM-FM Stereo, Cloth Int.
On Sale Only \$3,650