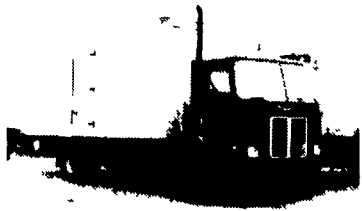


## CUMBERLAND TRUCK EQUIPMENT CO.



**1978 Road Expeditor**  
33,000 GVW, 22' Van Body,  
6-71 Eng., 10 Spd., Great Truck  
**\$3,900**



**1980 Ford S/A Dump**  
3208 Cat, 5 & 2, 33,000 GVW,  
Air Brakes, PS  
**\$13,900**



**12 GMC S/A Tractors**  
1980 to 1983  
6V92, 9 Speeds  
**Starting \$3,500**



25 Roadway Drive • Carlisle, PA 17013

Office: (717) 249-2922 Office: (800) 828-6878  
Fax: (717) 249-9058

## Keystone Peterbilt, Inc.

1467 Manhelm Pike • P.O. Box 4396 • Lancaster, PA 17604

1-800-729-7383

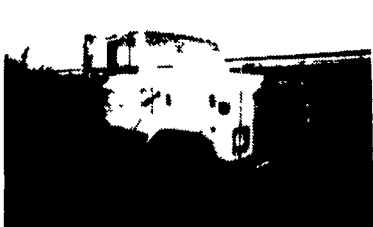


717-299-6630

**Trucks — New and Used**



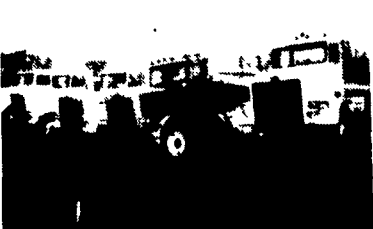
**1978 & 1979 PETERBILT**, Cabover, Cat & Cummins Power, Air Ride Suspension, Call For Further Specs.



**1979 INTERNATIONAL 2575, 290** Cummins w/Jake, 9 Speed, 38,000 Diff., Hend. Suspension, PS.



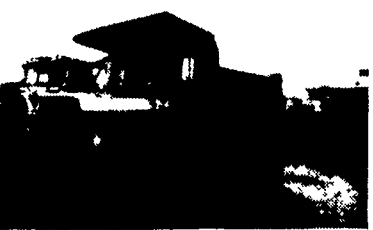
**1984 FREIGHT LINER**, Conv. w/60" Sleeper, 400 Cummins, 13-Speed, Air Ride, 24.5 Aluminum Wheels - Nice Truck!



**1984, 85, 86 PETERBILT**, Conventional Non-Sleeper, Cummins Power, 9 Speed, Air Ride Suspension, PS, AC



**1984 & 1985 PETERBILT** Double Bunk Cabovers, Cummins, 13 Speed, Air Ride Susp., Very Clean Units - Call For Further Specs.



**1979 MACK TANDEM DUMP 14'** Steel Body, 300 HP, Jake Brake, 6-Speed, 38,000 Diff, Very Good Mechanical Condition.

(2) Cab & Chassis Diesel, 5 Speed Trucks, (1) 4x4

(3) 4WD, Diesel Pickups, In Stock Ready For Delivery

1990 B-350 Maxie Wagon, 15 Passenger, Dbl. Air, 8000 Miles.

SEE OR CALL **UNCLE MILTIE**

(Milton Hess) For All Your Truck Needs Serving The Area For Over 35 Years

**E-TOWN DODGE**

717-367-6644  
717-653-6667  
E:izabethtown, PA

*E-Z Dumper*

## TURN YOUR PICKUP INTO A DUMP TRUCK IN LESS THAN ONE HOUR.

**E-Z** Dumper is the original hydraulically operated dump unit for pickup trucks. With E-Z Dumper you can unload your pickup truck bed in under thirty seconds with the turn of a key. You'll never have to unload your truck by hand again!

The E-Z Dumper can hold and unload up to 4,000 lbs. or two cubic yards of firewood, topsoil, gravel, mulch, grain, or whatever, depending on the weight-carrying capacity of your truck.

**Easy To Install And Operate.** Do-it-yourself installation of E-Z Dumper is a breeze. No alterations are needed for most trucks.

Just slide the dumper into your truckbed, secure it with bolts and holes already on your truck, and you're ready to go. We even include the hydraulic fluid!

**A Durable Investment.** E-Z Dumper is designed to take a beating from the toughest loads, from two yards of cordwood to two tons of crushed stone, while providing you with years of reliable service.

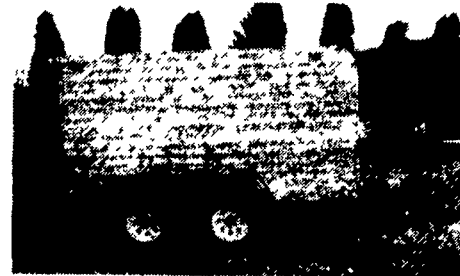
**\$1,895**



**Ringo Hill Farms Equipment Co., Inc.**

1624 Rt. 212, Pleasant Valley  
Quakertown, PA 18951  
(215) 346-7340 (215) 346-8041 FAX

## KODIAK TRAILERS BY STAUFFER MFG.



**Custom Built Trailer To Your Specifications**

—Landscapers - Car Trailers —

Snowmobile Trailers - Enclosed Trailers

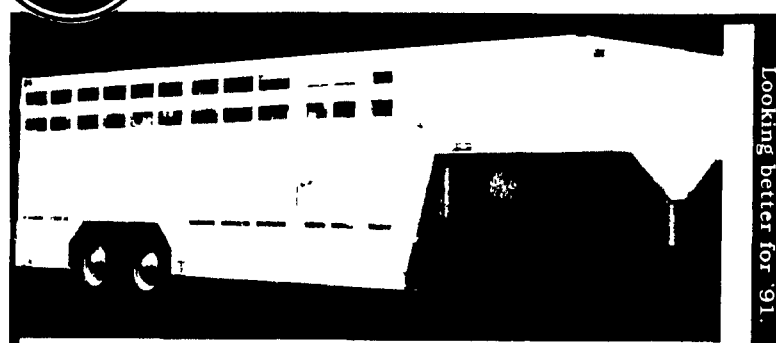
—Utility Trailers—

**Dealers Wanted**

Martindale, PA 17549  
(215) 445-6122



## WRANGLER



**OUR BEST VALUE TRAILER JUST GOT BETTER.**

The new Wrangler. More aerodynamic. Better looking. And the strongest Wrangler yet. With top-quality components and rugged construction, this Wrangler is the best trailer value you can find.

- **LIGHTWEIGHT**-Eby stock trailers are 25-35% lighter than comparable steel trailers. Less weight means better fuel mileage or increased payload
- **MAINTENANCE**- Eby aluminum trailers won't rust. Welding and painting can cost you dollars in down time and repairs
- **DURABILITY**- Eby trailers are built tough. Quality components and 6061 alloy aluminum provide the ruggedness required in a livestock trailer

**M.H. EBY, INC.**

Route 23, Blue Ball, PA 17508  
(717) 354-4971 800-292-4752

4435 St. Route 29  
West Jefferson, OH 43162  
614-879-8901 800-292-4752

**SALE SALE**

**USED GOOSENECK TRAILERS ALUMINUM**

- 86 22' Keifer
- **STEEL**
- 81 24' Valley
- 85 24' Pioneer
- 78 20' Cherokee

**USED ALUMINUM HORSE TRAILERS**

- 88 20' Arndt
- 3 Horse Tack Room
- 85 Eby 5 Horse

**USED CATTLE BODIES**

- 8'6" Eby Brand New Cattle Body
- (2) 22' Eby Cattle Bodies



**SALE SALE**