

(Continued from Page A5)

WEIGHTS 72.00-75.00, SELECT AND CHOICE 1-2 950-1100 LBS. 68.00-73.50, SELECT AND CHOICE 1-2 1100-1375 LBS. 67.00-73.00, SELECT AND CHOICE 1-2 OVER 1375 LBS 65.00-72.00

HOLSTEINS CHOICE 2-3 1050-1450 LBS 68.00-75.00, SELECT 1-2 1050-1450 LBS 62.00-67.50.

SLAUGHTER HEIFERS: 57 HEAD TREND, STEADY CHOICE 2-3 850-1000 LBS 68.00-75.00, CHOICE 2-3 1000-1250 LBS 73.00-80.00; CHOICE 4 ALL WEIGHTS 70.00-74.25; SELECT AND CHOICE 1-2 850-1000 LBS. 66.00-72.50; SELECT AND CHOICE 1-2 1000-1250 LBS. 68.00-74.75

HOLSTEINS. CHOICE 2-3 1000 1350 LBS. 67.00-71.75, SELECT AND CHOICE 1-2 1000-1350 LBS 59.00-65.50

SLAUGHTER BULLS 17 HEAD TREND STEADY YG#1 ALL WEIGHTS 63.00-70.50, YG#2 ALL WEIGHTS 57.00-61.50

BULLOCKS 6 HEAD CHOICE 1-3 1150-1375 LBS 70.00-72.50, SELECT 1-2 950-1250 LBS. 68.75-72.00

COWS. 372 HEAD

STOCKER AND FEEDER CATTLE RECEIPTS: 425 HEAD. INCLUDES SPECIAL FEEDER CATTLE SALE FEB. 1, 1991. TREND: 5.00-1.00 HIGHER BEEF TYPES: 200-400 LBS. STEERS 85.00-112.00, BULLS 80.00-106.00, HEIFERS 70.00-90.00, 400-600 LBS. STEERS 82.00-106.50, BULLS 74.00-92.00, HEIFERS 70.00-87.00, 600-800 LB. STEERS 72.00-82.50, BULLS 65.00-72.50, HEIFERS 62.00-76.00; 800-975 LBS. STEERS 69.00-76.00, BULLS 58.00-64.50, HEIFERS 64.00-72.50

HOLSTEINS & DAIRY CROSS 200-400 LBS. STEERS 80.00-105.00, BULLS 76.00-102.00, HEIFERS 75.00-111.00, 400-600 LBS STEERS 70.00-82.50, BULLS 68.00-77.00, HEIFERS 70.00-84.50, 600-800 LBS STEERS 64.00-71.50, BULLS 60.00-66.75, HEIFERS 65.00-72.00; 800-975 LBS STEERS 58.50-66.50, BULLS 55.00-61.50, HEIFERS 57.00-65.00.

CALVES: 515 HD VEAL CALVES TREND. STEADY CHOICE 150-300 LBS 87.00-101.00, GOOD 150-300 LBS 72.00-82.00, GOOD 100-150 LBS

55.00-70.00, GOOD 80-100 LBS 48.00-55.00, STANDARD 80-100 LBS 42.00-47.50, STANDARD 80 LBS. & DOWN 41.00 & DOWN CALVES RETURNING TO FARM TREND STEADY TO 5.00 LOWER HOLSTEIN BULLS OVER 100 LBS UP TO 155.00, UNDER 100 LBS UP TO 150.00, HOLSTEIN HEIFERS, OVER 100 LBS UP TO 170.00, UNDER 100 LBS UP TO 145.00, BEEF TYPE BULLS, OVER 90 LBS UP TO 170.00, BEEF TYPE HEIFERS, OVER 90 LBS UP TO 150.50

SHEEP AND LAMBS: 33 HD TREND STEADY. CHOICE 80-100 LBS 45.00-48.00, 100-120 LBS 42.00-46.50, 120 & OVER 35.00-42.00, MEDIUM & GOOD ALL WEIGHTS 42.00-46.60

SHEEP. EWES LEAN 20.00-24.50, EWES FAT 14.00-19.00, YEARLINGS 27.00-32.00, BUCKS 15.00-22.00

GOATS 62 HD SMALL 18.00-30.00, MEDIUM 31.00-50.00, LARGE 51.00-90.00

HOGS, SOWS & BOARS 118 HD HOGS BARROWS & GILTS TREND. 1.00 HIGHER. 210-250 LBS. 50.00-52.00, 250-260 LBS 48.00-50.50, 260-270 LBS 46.00-48.50, 270-300 LBS 45.00-48.00

LIGHT HOGS: 140-180 LBS. 38.00-44.00; 180-210 LBS. 42.00-45.00

SOWS: TREND. STEADY TO 1.00 HIGHER GOOD SOWS UNDER 400 LBS 43.00-47.00; GOOD SOWS OVER 400 LBS 43.00-48.00, CULL SOWS ALL WEIGHTS 40.00 & DOWN

BOARS: TREND STEADY 180-210 LBS. 26.00-40.00; 210-260 LBS 38.00-40.00; 260-300 LBS 33.00-36.50; 300 LBS. & OVER 35.00-37.00.

SALE EVERY MONDAY AT 2:00 PM & EVERY THURSDAY AT 1:00 PM

HAY & STRAW SALE EVERY MONDAY & THURSDAY AT 11:30 AM SPECIAL FEEDER CATTLE SALE: FRIDAY, MARCH 1 AT 7:15 PM

SPECIAL FEEDER PIG SALE SATURDAY, FEB 23 AT 1:00 PM

Delmarva Broiler Fryer

Feb. 6, 1991

Movement of ready-to-cook broiler fryers was no better than fair, but about as expected for mid-week trading. Supplies of 3 lbs. and over sizes were barely adequate,

lighter weights were fully adequate. Less than trucklot asking prices were unchanged to higher at 46-59 cents. Live supplies were adequate. Average live weights were in a full range. Processing schedules were very light. The trade sentiment was steady to barely steady. In the parts complex, supplies of boneless skinless breast were fully adequate to ample. Wings and dark meat were adequate, whole breast were adequate to fully adequate ESTIMATED SLAUGHTER OF BROILER/FRYERS IN DELMARVA (000) ESTIMATED ACTUAL AVG. WGT. ACTUAL AVG WGT. 2/6 2/4 2/4 1/30 1/28 1,728 2,073 4 55 2,108 4 50

NEW YORK MULTIPLE DROP BROILER REPORT:

CURRENT BROILER/FRYER NEGOTIATED PRICES FOR IMMEDIATE DELIVERY INCLUDES MOSTLY MULTIPLE-DROP SHIPMENTS OF BRANDED AND WING TAGGED TO NEW YORK CITY FROM DELMARVA BRANDED U.S. GRADE A RANGE 46-59 WEIGHTED AVERAGE 50.71 NO OF BOXES 11,631

Westminster Hay

Westminster, Md.

Tuesday, Feb. 5, 1991

Report Supplied by Auction

TOTAL LOADS: 124.
ALFALFA: 70.00-130.00, 1.00-3.10 BALE, ROUGH .70 AND .90 BALE.
TIMOTHY: 70.00-80.00, 1.10-1.70 BALE.
TIMOTHY MIX: 52.50-92.50, 1.00-1.50 BALE.

ALFALFA ROUND BALES: 50, 19.00-20.00 EACH.

TIMOTHY ROUND BALES: 50 00, 5.00-20.00 EACH.

CLOVER HAY: 70.00, .90-1.60 BALE.

GRASS HAY: 35.00, .45-1.40 BALE

GRASS ROUND BALES: 13 00 EACH

EAR CORN: 80.00.

CLOVER SEED: 50 00 BU.

OATS: 1.75-1.80 BU.

STRAW: 77.50-87.50, .45-1.10 BALE

WOOD: 40.00-67.50 FULL CORD.

MULCH HAY: .20 BALE.

New Holland Horses

New Holland Sales Stables

New Holland, PA

Monday, Feb. 4, 1991

REPORT SUPPLIED BY AUCTION

REGISTERED RECEIPTS OF 246 HEAD OF HORSES, MULES AND PONIES. MARKET STRONGER.

DRIVING HORSES: 485.00-1000.00.

RIDING HORSES: 475.00-810.00.

REGISTERED HORSES: 785.00-910.00.

LIGHTWEIGHT KILLERS: 410.00-500.00

HEAVYWEIGHT KILLERS 580.00-900.00.

THIN HORSES: 50.00-355.00.

MARE PONIES: 50.00-200.00.

COLTS: 40.00-90.00

GELDINGS: 50.00-200.00.

LARGER PONIES: 235.00-400.00.

Grantsville Livestock

Grantsville, Maryland

Sat., Feb. 2, 1991

HOGS: TOP BARROWS & GILTS 49.75-52.50, HEAVY BUTCHER 46.50-51.50, LIGHT BUTCHER 38.00-48.00, BUTCHER SOWS 40.00-46.50, FEEDER SHOATS 5.00-55.00.

VEAL: GOOD 75.00-95.00, STANDARD 48.50-65.00, UTILITY 35.00-40.00, BULL CALVES 1.00-1.60

SHEEP & LAMBS: GOOD 50.00-52.50, UTILITY 45.00-48.50, SLAUGHTER EWES 12.00-24.00.

SLAUGHTER CATTLE: STEERS GOOD: 70.00-72.50; STANDARD 62.50-68.50; UTILITY 58.00-60.00

HEIFERS: GOOD 65.00-68.50; STANDARD 60.00-62.50, UTILITY 52.00-58.00.

COWS: COMMERCIAL 48.00-52.50, UTILITY 42.00-45.00, CANNER & CUTTER 40.00 DOWN.

BULLS: COMM. & GOOD 56.00-65.00; CUTTER AND UTILITY 48.00-54.00.

STOCK-FEEDER CATTLE: GOOD 72.50-87.50; MEDIUM 60.00-70.00.

STEER CALVES: GOOD 85.00-95.00, MEDIUM 65.00-75.00.

HEIFER CALVES: GOOD 72.50-90.00; MEDIUM 60.00-70.00.

EGGS: LARGE .70-.87; MEDIUM .65-.75.

CRIPPLED AND DISABLED COWS, STEERS & BULLS

Slaughter Under USDA Inspection

FREE CALL

1-800-234-COWS (2697)

215-286-9400

Wayne Taylor

Lebanon, Berks, Lancaster & Chester Co.

PARADISE CONCRETE METERED DELIVERY!

You can't over or under order! Guaranteed Savings! Call us for Prices. Variable Pricing!

DELIVERY ANYTIME!

Dedicated To The Farm Community

19 Meadow Lane Paradise



717-687-0990

Mitch White Eric R. Probst

HORSE SALE
FRI. FEB. 15, 1991
10:00 A.M.
Tack 9:00 A.M.

NEW HOLLAND SALES STABLES INC. THE ACTION AUCTION

25 LOCAL YEARLING VACCINATED HEIFERS (Had All Shots) SELLING WED. FEB. 20 SPECIAL DAIRY SALE

LIVESTOCK IS OUR ONLY BUSINESS

MONDAY

SLAUGHTER HOGS



EARLY BIRD HOG SALE
8:00 A.M.

Sell Your Hogs At New Holland Sales Stables, Inc. See them weighed, sold and pickup your check.

10:00 AM

HORSES MULES



1:30 PM
BEEF SALE

SHEEP



CALVES

WEDNESDAY

DAIRY HEIFERS 11:00 AM COW SALE 12:00 NOON COWS BULLS



We have the usual run of 50 to 100 Heifers, all ages. Loads of fresh cows and springers from our regular shippers. Also some local fresh cows and springers.

1:30 P.M.
FEEDER PIG SALE

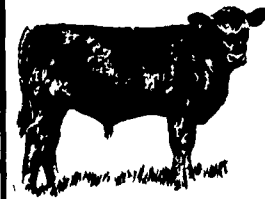


Pigs are accepted after 6:30 A.M. State graded from 8 to 12 Dairy Barn and Feeder Pig Barn are cleaned and disinfected weekly for your protection.

THURSDAY

Beef Auction
10:00 A.M.

BULLS STEERS BEEF COWS



STOCKERS & FEEDERS

12:30 P.M.

SHEEP GOATS CALVES



NEW HOLLAND SALES STABLES, INC.

12 Miles East of Lancaster Off Route 23, New Holland, Penna.

MANAGERS

Norman & David Kolb - 717-397-5538

Field Representatives

Luke Eberly - 215-267-6608 738-1865

Homer Eberly - 215-267-3047

Sale Barn Officer Manager
Roger Floyd - 717-354-4341

Order Buyer

Paul Good - 215-445-6662

Feeder Pig Representative

Mel Hoover - 717-354-8397