

## Proposed State Ag Budget

(Continued from Page A24)

"It's similar to Hershey Medical Center in offering services many private hospitals can not offer. Hershey is important to the commonwealth, and even Casey's used that facility when

he required quadruple bypass heart surgery.

"Once again, the governor is taking a shot at production agriculture."

While overall ag research has apparently not been cut, Craw-

ford said that Penn State University's appropriations for agricultural research went from \$19,268,000 to \$17,268,000. PSU research had received a \$1 million boost last year and now gets a \$2 million cut.

"There is no question that we will be conferring with Penn State University and the University of Pennsylvania to discuss that funding and any steps that may be necessary to address that situation," Crawford said.

Miller said that the House and Senate are apparently not too far apart in criticism of the budget.

"Basically, we had identified the same basic concerns with the governors proposal. But there are a couple other areas of concern."

"The Farm Show transfer fund, which has been reduced from \$1 million down to \$650,000. It has been budgeted at \$1 million for as long as I can remember," Miller said.

"At first blush, the farm community may say, 'What impact does that have on us?'"

"It will because the leases for several agricultural shows held there will be affected.

"So far, the costs of operating were reduced because the (Farm Show) management was good and able to do a good job and reduce it. But to cut their budget because they are doing job is punishment instead of a reward for good management.

"The junior dairy show, the 4-H horse and pony show, Keystone International Livestock Exposition and the All-American Show, may be forced into paying higher fees for renting space when they come to host the show next year. That will have a ripple effect that will impact on farmers," Miller said.

Furthermore, Miller attacked a proposed cut in funding which Casey has repeatedly made in his proposed budgets.

"The \$40,000 that Gov. Casey, in his infinite wisdom, has tried to take away from the FFA Foundation, which is basically a youth organization, certainly seems unwise.

"That is putting \$40,000 not only into our farm youth, but he

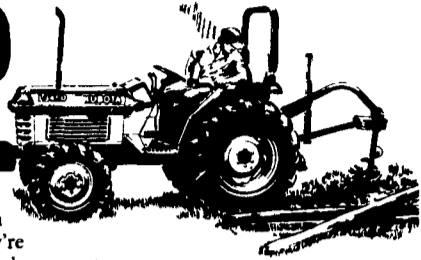
should recognize that the state's largest FFA organization is in Philadelphia. We think it is unwise to drop the money from support of some of the urban youth and put into a drug rehab program somewhere else. We think it is well spent as it is and needs to be continued."

"Going back to the farm show, his justification, similar to the milk marketing board, is trying to convince the public that this is a move for self-sufficiency. But they are taking money that is taken in from the Farm Show and asking the commission just to drop those in the general fund.

"Not only do we have to disagree with reducing the Farm Show budget for 1991-92, but in the present fiscal year he's targeting \$859,000 from their funds. So he's costing the Farm Show almost \$1 million as it celebrates it's 75th anniversary; which is not a very nice birthday present."

**MILK AMERICA'S HEALTH KICK**

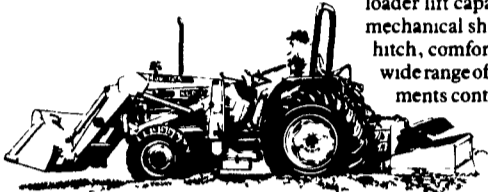
# DEMANDING JOBS DEMAND KUBOTA



What makes the new models in Kubota's L-Series so unique? They're the first compact tractors ever with the innovative "Ever Clutch"

It's a true wet clutch that works hard and long without mechanical failure or maintenance nightmares. Kubota is so sure of the "Ever Clutch" that it has developed a 3 year/1500 hour clutch warranty.

The new L-Series with 23-49 PTO HP also has improved working efficiency and overall performance with a powerful hydraulic system and increased front loader lift capacity. Power steering, mechanical shuttle transmission, 3-point hitch, comfortable operator area and a wide range of performance matched implements contribute unmatched versatility.



For jobs that demand power and mobility, look to Kubota's new L-Series.

## Kubota

### Special Prices On Rental Tractors And Used Kubotas

	WAS	SALE
1 - B7100 HSE, 16 Hp., 2 WD, Diesel w/48" Mower, 930 Hrs. ....	\$4,900	\$4,200
1 - B9200 HSD, w/Loader, Low Hours .....	\$9,900	\$9,400
1 - B4200 DT w/Belly Mower, Excellent Condition .....	\$6,500	\$5,900
1 - L275 DT w/Loader, 252 Hrs., Sharp! .....		Coming In!
1 - L295, 4WD, 29 Hp., Tractor/Loader/Backhoe, Excellent Condition .....	\$12,500	\$11,200
1 - M4030DT, 4WD, 50 HP, 1 SOLD, Exc. Cond. ....	\$12,900	\$11,900
1 - L355, 4 WD, 36 Hp. Tractor w/Loader, 1800 Hrs. ....	\$9,900	\$8,900
1 - G6200, Hydro w/48" Belly Mower & Blade .....	\$5,400	\$4,900
1 - B9200 DT, Gear w/Loader .....		Coming In!
1 - R400 Articulating Loader, Rental, 350 Hrs. ....	\$42,000	\$26,500
1 - L2250 4WD, Tractor w/Loader, Rental, 225 Hrs. ....	\$11,950	\$11,500
1 - L3750 HDT Tractor/Loader/Backhoe .....		Coming In!

Many Other Items Not Listed!

## Kubota

Full Service,  
Parts And Rental

### NICARRY EQUIPMENT CO.

RD #2, Box 2008, Reading, Pa. 19605  
215-926-2441

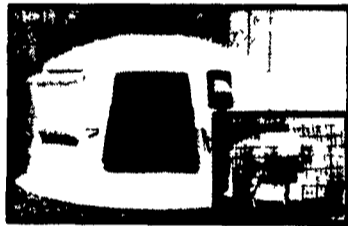
Located: 4 Miles North of Reading On Rt. 61  
3 Miles South of Leesport  
Hours: Mon. thru Fri. 8 to 5; Sat. 8 to 3

## Poly Dome Means Healthier Calves.

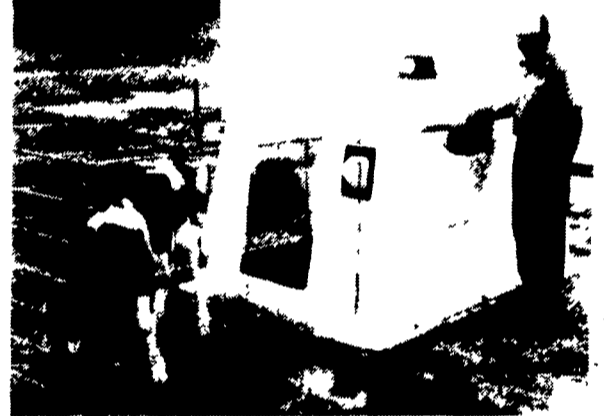
All-Season

Big Foot 5'x7'6"

The Poly Square Big Foot is constructed of Opaque material to eliminate the solar effect. It blocks out sunheat-not sunlight. Poly Square's inverted ribs and 5' (W)x7'6"(L) make it the biggest unit on the market today and extremely wind resistant.



POLY DOME 60 (H) x 88 (D)



New Side Hay Feeder - Made especially for Poly Square Big Foot, no other unit has this feature. Also has a center roof vent for better air movement.

### GRO-MOR PLANT FOOD CO.

281 Farmland Rd., Leola, Pa. 17540  
1-800-322-0060

Check Our February  
Prices On Poly-Dome  
And Poly-Square Calf Nurseries

# afs

"We not only give you what we have; but also what you want."

### SPECIALIZING IN:

- Grain Drying
- Handling
- Storage
- Milling Equipment



At 608 E. Evergreen Rd.  
Lebanon, PA 17042  
(717) 274-5333

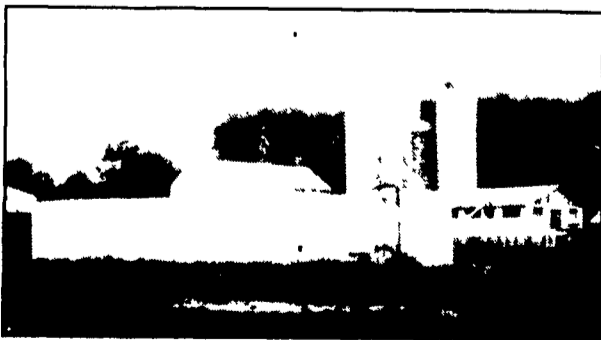
# GROFFDALE CONCRETE WALLS INC.

148 Brick Church Road  
Leola, PA  
717-656-2016

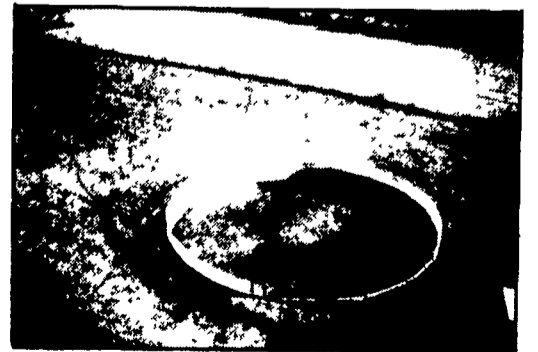
LET OUR 10 YEARS EXPERIENCE WORK FOR YOU!

WE ORIGINATED THE CONCRETE SYSTEM!

- WORKING WITH FARMERS WITH CHESAPEAKE BAY FUNDING -



ABOVE-GROUND MANURE STORAGE TANK WITH SIDE-MOUNT PUMP



IN GROUND MANURE STORAGE SYSTEM

Our Sales Tool Is A Satisfied Customer -  
Call Us For Information!

WE WORK HARD FOR CUSTOMER SATISFACTION

SIZES AND LAYOUTS TO YOUR SPECIFICATIONS