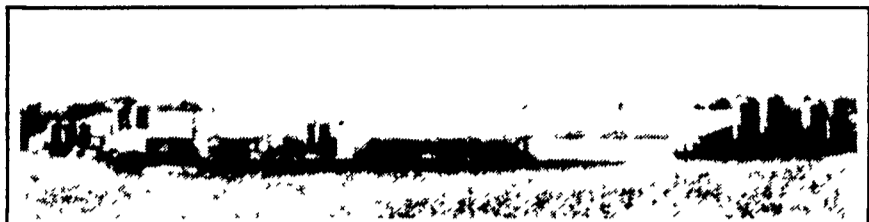
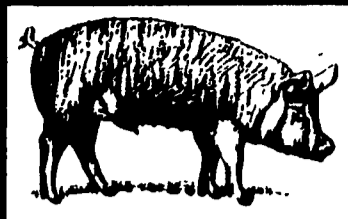


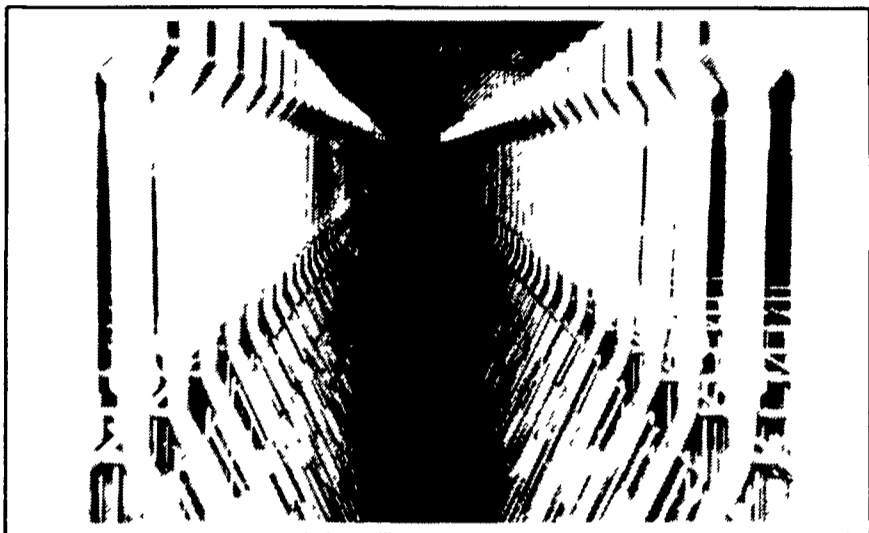
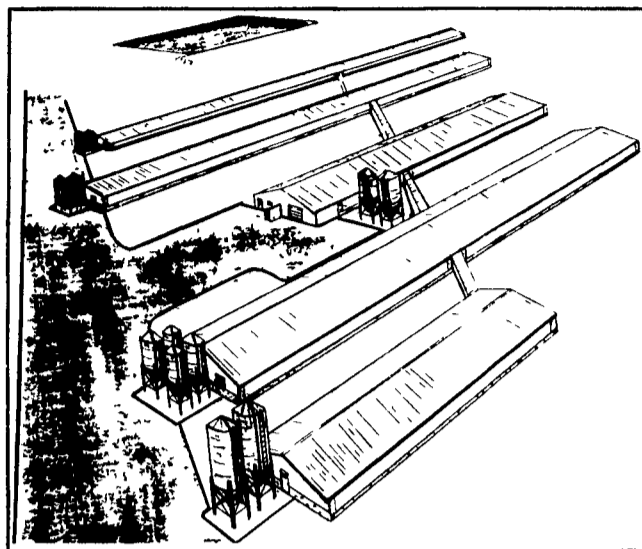
THANK YOU

To *STONE HOLLOW FARMS* For Choosing
TRI-COUNTY For Your Renovation And
 Expansion Project

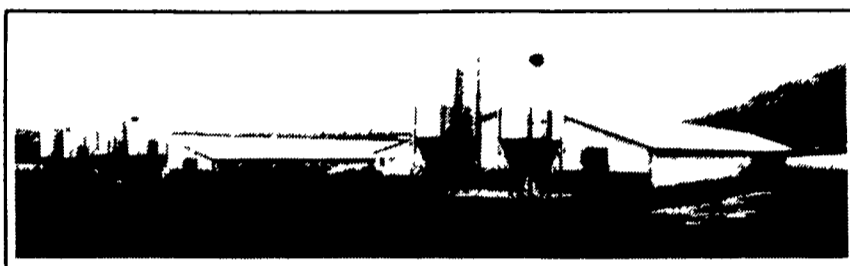


500 Sow Farrow To Finish Unit Renovated To
 930 Sow Farrow To Feeder Pig Unit

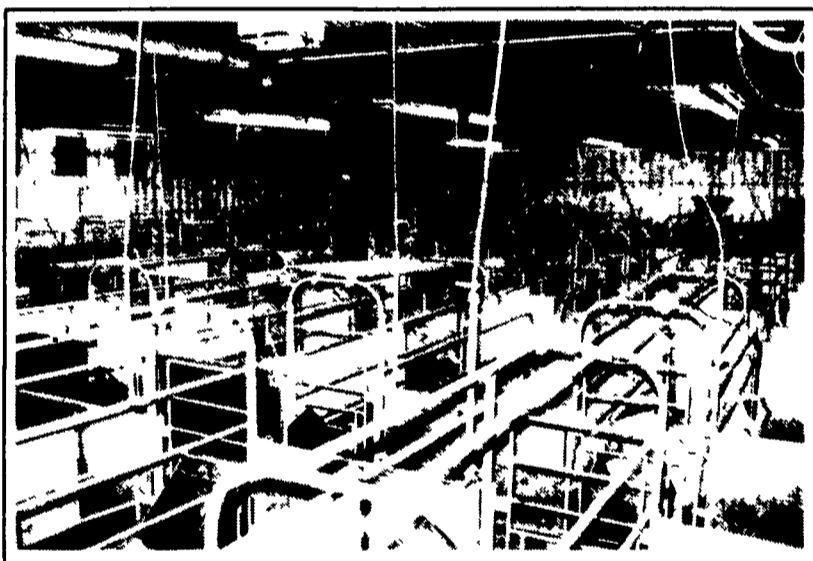
New 5,600
 Head All-In-
 All-Out
 Finishing
 Complex With
 Central Load-
 Out Room,
 Scales And
 Office Area



Solid Steel Breeding Stalls With Stainless Steel
 Trough And Automatic Feeding



Double **GSI** Feed Bins **aerotech**[®]
 High Efficiency Fans



Solid Steel TRI-COUNTY Farrowing Crates
 With Extra Heavy Duty 5/16" Woven Wire



HOG SLAT Precast Concrete Slats, Fencing &
 Feeders For Proven Durability & Performance

FEATURING:



- Wet Cast Concrete Slats
- Stainless Steel Feeders
- Solid Steel Fencing

- Galvanized Feed Bins
- Flex Flow Augers

- Engineered Ventilation System
- High Efficiency Exhaust Fans
- Evaporative Cooling

TRI-COUNTY Can Design And Construct Your Hog Facility
 Using Proven Products You Can Depend On For Years Of
 Predictable Durability And Performance



TRI-COUNTY
 CONFINEMENT SYSTEMS INC.
 608 E. Evergreen Rd., Lebanon, PA 17042

Ph: 717-274-3488

Hours: Mon.-Fri.
 7:00 to 4:30;
 Sat. 8:00 to 12:00