

National Polled Hereford Show Set

KANSAS CITY, Mo. — American Polled Hereford Association members from every corner of the country are planning to gather in the southeastern region of the nation as the breed celebrates its 68th National Polled Hereford Convention, Show, and Sale Feb. 11-14 in Jackson, Miss.

Nearly 500 head of bulls, heifers, and cow-calf pairs are entered in the national show, set for Tuesday and Wednesday, Feb. 12-13, during the Dixie National Livestock Show. Judges for the two-day event are Jarold Callahan, Oklahoma State University, Stillwater; Steve Radakovich, Earlham, Iowa; and Keith Rooker, Uniontown, Pa.

Convention activities planned during the week include the annual meetings of the APHA membership and the National Organization of Polled-ettes, the auxiliary to the APHA. Highlighting convention activities on Monday, Feb. 11, is an educational seminar playing off the breed's new promotional theme, "Polled Hereford The Cost-Cutting Beef Breed."

The seminar, "Breakthroughs in Cost-Cutting," will focus on better familiarizing APHA members with trends in the beef industry, particularly in the need of cutting costs. Guest speakers include NCA's Chuck Lambert and Merlyn Carlson, a former NCA Chairman and a Beef Board member. Lambert will discuss the cost-cutting changes being made on the packing side of the industry, while Carlson will present changes from

a producer's standpoint. A three-member breeder reaction panel will lead a question and answer session.

Numerous awards headline the Convention Week, with some being the naming of the National Polled-ette of the Year, the crowning of the 1991 National Polled Hereford Queen, and the induction of five breed and beef industry leaders into the Polled Hereford Hall of Fame and Hall of Merit.

Glenn Burrows, a long-time Polled Hereford breeder from Clayton, N.M., will be inducted into the Hall of Fame. Hall of Merit honorees include Fred "Hoss" Shaw, Jackson, Miss., for his work in communications; Sue Saltmarsh, Beavercreek, Ore., for her work with youth; Dr. Larry Benyshek, University of Georgia, Athens; for his excellence in education and research; and J. Burton Eller, Jr., NCA senior vice president of government affairs, for his work in public affairs.

Dale Minnick, a humorist, motivator, and cattleman from Woodward, Okla., will entertain members and guests attending the National Awards Banquet on Wednesday evening, Feb. 13. Jim Harris, long-time APHA employee, will also be recognized during banquet activities.

Breed association members will round out their week of events with the National Sale on Thursday, Feb. 14. Twenty-five herd additions are scheduled to sell that day at the Dixie National Fairgrounds Trade Mart.

Pa. Beef Expo To Host Junior Show

EBENSBURG (Cambria Co.) — Junior beef producers are invited to be a part of the 1991 Pennsylvania Beef Expo. The Pennsylvania Beef Expo is an annual event sponsored by Penn State, the Pennsylvania Department of Agriculture, the Pennsylvania Beef Council, and the Pennsylvania Cattlemen's Association.

The expo will be held at the Penn State Ag Arena from March 28 and 30. The Junior Steer Show is scheduled for Friday afternoon at 3:30 p.m. following the MAEC Tested Bull Sale. The heifer show will be held the next day, Saturday, March 30, at 8 a.m. prior to the purebred female sales. Steer classes will be divided based on

hip height, while heifer classes will be divided by age within breed.

Youth interested in participating in these shows, or the other activities of the Pennsylvania Junior Cattlemen's Association, contact Melanie Barkley, R.D. 1, Box 2, Aaronsburg, PA 16820, (814) 349-5728.

GOODYEAR
P. Lebzelter & Son

LEBZELTER FIELD & FLEET CENTER

DYNA TORQUE RADIAL

*Revolutionary 3 Lug Per Pitch Design Improves Traction And Ride
*Computer Designed
*Natural Shape Casing Improves Tire Body Life
*Radial Construction Provides Better Traction, Lower Fuel And Overall Costs.



SIZE	PRICE
18.4R34 1 ★	\$475.00
18.4R38 1 ★	\$500.00
20.8R38 1 ★	\$675.00
18.4R46 3 ★	\$925.00

DYNA TORQUE RADIAL NO RISK OFFER

Buy a pair of Dyna Torque radials now. If, after 90 days from day of mounting, you are not completely satisfied with the performance of these tires, we will remove them and replace them with new Goodyear Dyna Torque bias ply tires of like size and ply rating and will credit you for the difference.

DYNA TORQUE II

HARD WORKING HARD PULLING REAR TRACTOR TIRE

*Excellent drawbar pull with long-bar, short-bar lugs for improved traction



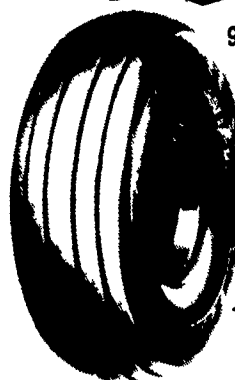
*Designed for improved stability and roadability, plus reduced vibration

*Strong angle-braced lugs have self-cleaning design

*High-strength polyester cord body, and heavy duty rim shield protects tire from damage

11.2-28 4 Ply	\$156.00	18.4-34 6 Ply	\$378.00
13.6-28 4 Ply	\$194.00	18.4-38 6 Ply	\$395.00
15.5-38 6 Ply	\$286.00	20.8-38 8 Ply	\$632.00
16.9-38 6 Ply	\$415.00		

FARM UTILITY



9.5L-14 8 Ply TL	\$49.00
9.5L-15 8 Ply TL	\$51.00
11L-15 8 Ply TL	\$50.00
12.5L-15 8 Ply TL	\$67.00
12.5L-15 10 Ply TL	\$78.00

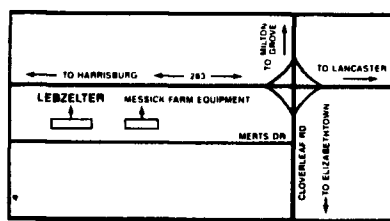
DYNA RIB PREMIUM



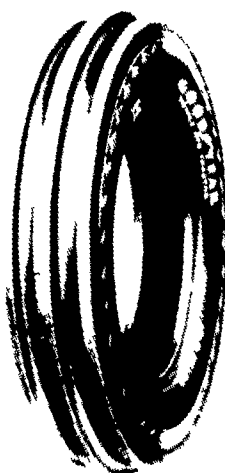
11L-15 6 Ply TL	\$97.00
10.00-16 6 Ply TL	\$100.00
14L-16.1 10 Ply TL	\$236.00
16.5L-16.1 8 Ply TL	\$317.00

GOODYEAR SKID LOADER TIRES

23-8.50-12, 4 Ply	\$54.00
27-8.50-15, 4 Ply	\$60.00
27-8.50-15, 6 Ply	\$68.00
27-10.50-15 6 Ply	\$76.00
10-16.5 6 Ply	\$89.00
12-16.5 6 Ply	\$120.00
14-17.5 10 Ply	\$280.00
15-19.5 8 Ply	\$330.00



FRONT TRACTOR



3 Rib	
6.00-16 4 Ply TT	\$37.00
6.00-16 6 Ply TT	\$40.00
4 Rib	
11L-15 8 Ply TT	\$79.00
10.00-16 8 Ply TT	\$84.00
11.00-16 8 Ply TT	\$101.00

✓ Total Computerized Vehicle Alignment — All Vehicles

✓ Large Tire Inventory — All Types & Size

✓ Complete Wheel Balancing

✓ 24-Hour Fleet & On The Farm Pit Stop Service



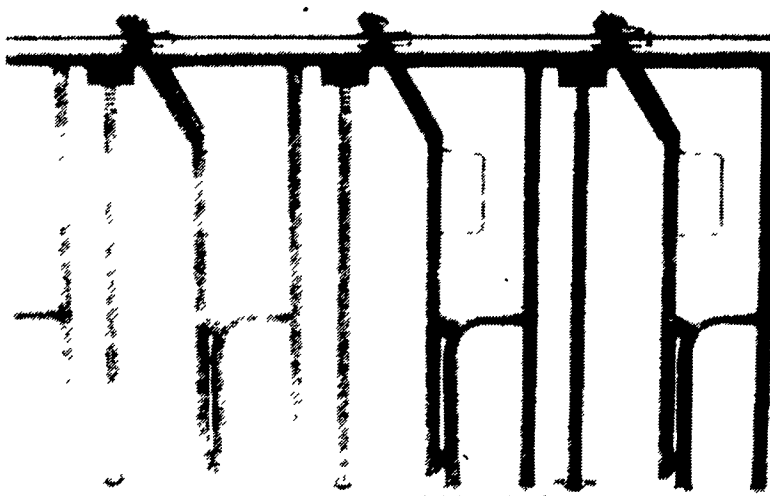
When You Need On-The-Farm Tire Service In A Hurry, Just Call Us. We Can Cut Your Downtime Down To Size!

P. Lebzelter & Son FIELD & FLEET CENTER

ROUTE 283 & RHEEMS EXIT
1-800-932-3999 OR 367-6777
(For Pennsylvania & Maryland)
Located Behind Messick Farm Equipment



HEADLOCKS



THREE SIZES AVAILABLE TO MEET ALL YOUR CATTLE HANDLING NEEDS EXTRA HEAVY CONSTRUCTION FEATURES

- * 1.9" O.D. High Yield Tube Top & Bottom Frame
- * 1" structural pipe on verticals & locks
- * All yokes lock on individual catches, no strain on control rod
- * Yoke stabilizer on large sizes
- * Unique design allows more head room
- * Neck bar can be removed or adjusted without tools
- * Individual lock on each yoke for holding one or more animals
- * No loose pins or parts to get lost in manure or drop in pit

PAUL B. ZIMMERMAN, INC.

Call or Write For Additional Information And Your Nearest Dealer

295 Woodcorner Rd.
Lititz, PA 17543
1 Mile West of Ephrata
Phone: 717-738-1121