

NH 479 haybine \$1,800,
NH 273 baler w/thrower
\$900, Ford 5000 diesel,
MF 135 diesel \$3,000, NI
323 1R corn picker \$1,000
(215)488-6491

MF 1155, CAH, 1 owner,
2,400 hrs., excellent,
\$6,500 301-833-9091
Used Gehl disc mower
model 2350
717-222-9090.

NH 489 haybine, \$2,200.
NH 256 rake, \$1,100 Both
in good condition. Even-
ings (215)593-2689.

NH 499 Haybine, hydro
swing, 12' cut, 3 yrs old,
super clean, \$9,000
301/898-7426

NH 782 forage harvester
with 2R adj. pickup heads.
Very good condition. Berks
County. 215-756-4379.

NH 985 Combine, 6-cyl
gas engine, 13' grain head.
\$1,000. 412/239-5431 or
412/941-7892.

NI 245 manure spreader
\$1500; 1500 gallon liquid
Martin spreader \$2000.
717-933-5771.

NI 702 diesel uni-system
combine w/13' grain head
and late model narrow 3R
corn head, working condi-
tion. Make Offer.
301-898-0047.

NI 713 Flex Head, Fas-
Tach, as is, \$1,000.
301/223-6364.

New Hawk belt barrel
spreaders, 157 Bu., and
217 Bu w/hydraulic lids.
717-222-9090.

NH 1037 bale wagon, 105
bales, good, \$9,300. Tony
Piersphel, Eden, New
York, (716)992-4301

New JD WF, \$1,095 IH HD
Torque Assembly, \$550.
No Sunday Calls
301/824-7240

New parts to fit Deutz 912
engines, pistons, rings, cy-
linders, \$195 Delco star-
ters for Deutz \$150. 5506
Deutz 1000-540 PTO,
\$3,000 New 300 gallon
poly tank, \$150. Irwin Nolt.
(717)354-7267.

New & Used Parts For
Oliver, Minn Moline & New
Holland 717-333-4256

FORKLIFTS



- 16,000 Lb. Clark, Dual Pneumatic, Detroit Diesel
Good Condition..... \$8,000
- 5,000 Lb. A/C's Solid Tire, LPG, 3
All run good\$2,000 to \$2,500 Ea.
- 12,000 Lb. Hyster Dual Pneumatic, New Engine And
Tires, 8' Forks, LPG, Very Nice..... \$11,000
- 8,000 Lb. Hyster, Dual Pneumatic, 1984, GMC Gas,
S/S 2,700 Hrs., Like New \$13,500
- 6,000 Lb. Baker Electric, 3 Stage, Sideshift, New Battery
& Tires, Very Good Condition..... \$5,000
- Forks 25,000 Lb. Cap. \$750/Pair
- 10,000 Lb. Cat pneumatic, 1980 Runs very good w/light
noise in engine, low mast \$6,500
- 12,000 Lb. Yale solid tire, LPG, very good condition,
low mast, good for rigging work..... \$7,500
- 8,000 Lb. Hyster, pneumatic, gas, side
shift, good condition..... \$5,000
- 3,000 Lb. Electric Walk Behind..... \$2,500
- 2,000 Lb. Electric Crown Straddle..... \$1,500
- 6,000 Lb. Yale Solid Tire 3 Stage, LPG \$2,000



**HYMAN EQUIPMENT
IN BALTIMORE, MD.
(301) 486-6691
Call Alan Hyman Anytime**

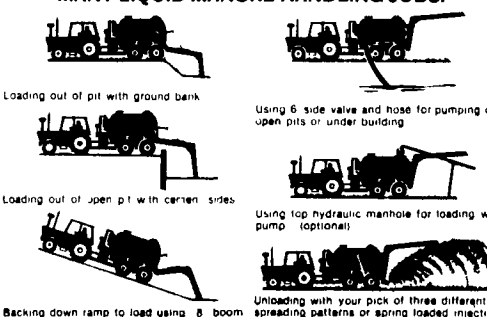
Many Other Forklifts, Not Listed In Inventory

THE 2900

SLURRY BUGGY



HAUL LIQUID MANURE ALL DAY WITHOUT GETTING OFF THE
TRACTOR SEAT USING THE SLURRY BUGGY EASY LOADER
THE SLURRY BUGGY IS DESIGNED FOR YOUR
MANY LIQUID MANURE HANDLING JOBS.



We Have Spreaders To Rent - 1500 & 2900 Gallon
FOR FREE LITERATURE CALL OR WRITE

SLURRY BUGGY EQUIPMENT COMPANY

BALDOR

Farm Duty Motors 1/3 To 10 H.P.

We Have Motors For All Your Farm Needs

- Conveyors
- Silo Unloading
- Irrigation
- Auger Drives
- Vacuum Pumps
- Aeration
- Grain Stirring
- Fans

Jet Pump, Heating And Air Conditioning Motors

We Service What We Sell
Competitive Prices
FOB Lancaster, PA

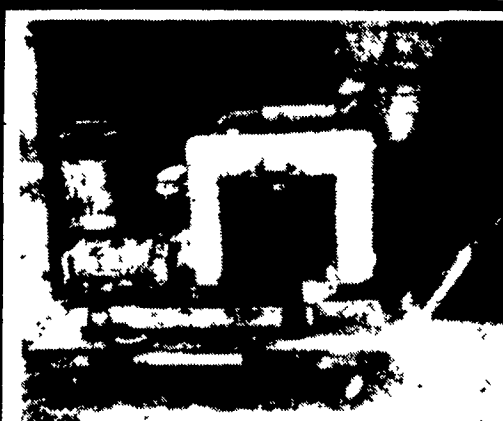
RAM MOTORS CONTROLS

70 Pitney Rd., Lancaster, PA 17603

717/392-2128

Ask For Glenn

Welder Repairs - Electric Motor Repairs



GARDNER-DENVER CYCLO-

BLOWER, T5CDL Series

12C Cap - CFM 425, 20 PSTG INT,
RPM 2800 - ROTAT CW
4.28 Hours on clock -
Excellent Condition

\$4,500.00

Call

Daytime (215) 598-7368

After 6 P.M. (215) 357-5996

Ag-Industrial Equip. Co.

DEUTZ-ALLIS



KUBOTA
Nothing like it on earth™



OPEN HOUSE - FRI., FEB. 15 & SAT., FEB. 16

Pancakes & Sausage 9 AM To 4 PM

Parts Specials and Winter Fix on NH Balers and Haybines.

NH Baler & Forage Harvester Reconditioning Special
10% Off Parts & Labor and Free Hauling Within A
40 Mi. Radius.
Good Thru 2/28/91

TRACTORS

Ford Jubilee 2WD
Ford 4400 G
Ford 555 A TLB w/Loader
Ford 8N
AC 185 w/Ldr.
Ford 3000 D
AC 7000 w/ROPS
AC 7580, 4WD, 222 HP
AC 714B Loader Tractor
Ford 4000 D
Case 1194 w/Cab
Farnall H Tractor
Case 411 B

MOWERS

Triumph Hydro Clipper
Beaver P10 Boom Mower

MOWER CONDITIONERS

(2) NH 1495 Haybine w/Head
(2) NH 495 12' Haybine
890 A Auger Base
890 WPU
MF 925 Mower Conditioner
(3) 489 Haybines
NH 489 Haybine

MISCELLANEOUS

Cat 933 Crawler Loader
Bearcat Flail Chopper
Brady Grinder Mixer

PLANTERS

AC 333 No-Til, 4 Row
AC 385 No-Til, 6 Row, Air
JD 1240 Planter

FORAGE EQUIPMENT

Dion Forage Wagon w/
Gear
Int. 830 w/Corn Head & WPU
822 Head

Gehl 1200 Harvester w/3RN
& WPU
NH #8 Wagons
Badger 716 Forage Box
NH 890 Harvester w/Row
Crop and Windrow

LAWN & GARDEN

Yazoo Model 28
Bushog Rts 62-03 Tiller
Ford LGT 165 w/50" Mower
JD 912 F w/Mower
Simplicity 4041 Tractor
w/Mower
AC Big 10 w/40" Mower
Ford LTD 11 H.P.
Bolen Lawn Tractor ST110
Cub Cadet 1650 w/50" Deck
Howard Pro 72 w/Mower
Satoh Beaver Mower/Blade
Kubota G 4200 w/Mower
Sovema Tiller

BALERS

NH 316 Baler w/75 Thrower
Thrower 75
NH 276 w/Thrower
(2) NH 269
NH 90 Bale Handler
NH 311 w/Motor
NH S68
NH S67
NH 271 Baler
JD 336 w/Engine
NH 283 Baler
NH 310
NH 270
NH 851, Auto Wrap Baler
MF 124 w/Thrower
(2) NH 276 w/Motor

TRACTOR LOADER BACKHOE

NH 454 Skid Loader
NH 445 Skid Loader
NH L250 Skid Loader
Case 480C, TLB
Ford 555A, TLB
Ford 4500 TLB

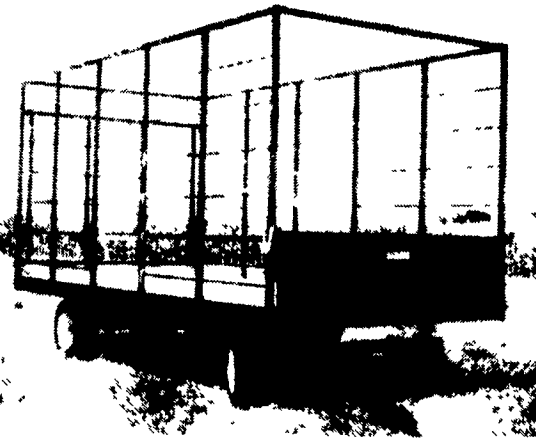
RAKES

NH 260

SPREADERS

IH 575 NH 520
S676 Fox NH 307
NH 308

BALE WAGONS



Check These Features To
See Why Our Wagons
Are A Better Buy!

- Eight foot wide inside by eighteen
feet long
- Rugged square steel tubing
- Fold down front gate w/diamond
plate platform
- Swing out tailgate
- Unload from side, front or rear
- Solid oak floor
- Formed steel rub rails along sides
- Eight ton running gear w/universal
bearings and extendable tongue
with choice of wheels and tires

FOR INFORMATION &
PRICES CONTACT
YOUR LOCAL DEALER!

EDGAR F.
DICKENSHEETS
New Windsor, MD
301-775-2909

C.B. HOOBER & SON
Intercourse, PA
800-732-0017

IRVIN L. GETZ
Mauertown, VA
703-436-3237

REIFFS FARM SERVICE
Shippensburg, PA
717-532-8601

NORMAN CLARK & SON
Honey Grove, PA
717-734-3682

RICHARD E.
KENWORTHY
Benardsville, NJ
201-647-2927

LEADER'S FARM EQUIP.
Everett, PA
814-652-2809

MARSHALL
MACHINERY
Honesdale, PA
717-729-7117

LEBANON VALLEY IMP.
Richland, PA
717-866-7518

ERB & HENRY EQUIP.
New Berlinville, PA
215-367-2169

C. PAUL JONES
Blairsville, PA
412-459-6656

GLENN E. WAGONER
Darlington, PA
412-827-2904

JAMES E. BERGEN
Slate Hill, NY
914-355-4571

TOM WOTRING
Aurora, WV
304-735-3501

KEITER FARM
MACHINERY
Halifax, PA
717-362-9574

WALTER COALE INC.
Churchville, MD
301-838-6470

PLAINFIELD AGWAY
Plainfield, CT
203-564-2779

GUNTHER HEUSSMAN
INC.
Emmaus, PA
215-965-5203

MARKOVITCH FARM
EQUIPMENT
Montrose, PA
717-278-3637

COOK IMPLEMENTS
DeRuyter, NY
315-852-9772

WILLARD CAMPBELL
Penna. Furnace, PA
814-237-4573

HOOBER EQUIPMENT
Middletown, DE
800-341-4028

NORMAN SHORES
TRACTOR
Towanda, PA
717-265-9014

Manufactured By

FARMCO MANUFACTURING

Manufacturing and Fabrication
2937 Irishtown Rd. • Bale Wagons
Ronks, PA 17572 • Cattle Feeders
• Wagon Gears

Call
Park Lefever, Ed Greenleaf, Sam Siple,
Al Miller, Irv Muentner
Service Call Terry Greenleaf
50 N Greenmont Rd., on Rt. 1, Rising Sun, Md.
301-658-5568 301-398-6132
215-869-3542
Immediate Financing
Hours Mon thru Fri 8 to 5:30, Sat 7 to 2
CLOSED SUNDAY