

**New York and Philadelphia Frozen Egg Report**

EDISON  
JANUARY 18, 1991  
NEW YORK AND PHILADELPHIA FROZEN EGG REPORT: FEDERAL-STATE

Prices were unchanged to lower. Trading activity was slow to moderate but for the most part limited to immediate needs. Raw materials were fully adequate and usually exceeded breaker needs. Floor stocks were generally in good balance to satisfy current buyers needs.

WHOLESALE SELLING PRICES (CENTS PER POUND IN 30 LB CONTAINERS)

CLASS TRUCKLOTS LTL (MIN 25 CONT) WHOLE 66-69 MOSTLY 67-68 70-76 BLENDS (7) - MOSTLY 72-82 WHITES 44-46 MOSTLY 44-45 47-56 YOLKS (MIN. 43% SOLIDS) SUGARED 78-82 MOSTLY 80-81 82-89 SALTED 73-77 MOSTLY 74-76 77-84 (7)-WHOLE PLUS YOLK PLUS SWEETENER, GENERALLY 28-32% EGG SOLIDS

**Philadelphia Eggs**

Thursday, Jan. 24, 1991  
Report Supplied by USDA

MARKET COMMENT. TRADE SENTIMENT WAS CAUTIOUSLY STEADY TO WEAK DEMAND CONTINUED MIXED, MOSTLY FAIR. SUPPLIES WERE ADEQUATE TO LONG ON THE LARGER SIZES, AND GENERALLY ADEQUATE FOR MEDIUMS A EXTRA LARGE .80-.89, A LARGE .78-.87, A MEDIUM .77-.80%.

**National Egg Market**

Jan. 23, 1991

The market tone was steady to weak in instances. Demand was mixed but usually reported as slower than last week and for the most part moderate at best. Supplies were usually in good balance with needs with large sized eggs often reported as long.

Breakers had sufficient stocks to run full schedules and in instances attempted to divert shell product through other channels.

**Greencastle Livestock**

Greencastle, Pa.

Monday, Jan. 21, 1991

SLAUGHTER CATTLE RECEIPTS: 512 HD. SLAUGHTER STEERS: 85 HD. TREND: STEADY TO 1.00 LOWER. HIGH CHOICE & PRIME 2-4 79.00-83.00; CHOICE 2-3 95.00-107.50. 73.00-78.00; CHOICE 2-3 107.50-137.50. 74.00-79.50; CHOICE 2-3 OVER 1375 LBS. 72.00-78.00; CHOICE 4, ALL WEIGHTS 70.00-75.50; SELECT AND CHOICE 1-2 95.00-110.00. 68.00-72.50, SELECT AND CHOICE 1-2 110.00-137.50. 67.00-73.00; SELECT AND CHOICE 1-2 OVER 1375 LBS. 66.00-71.50.

HOLSTEINS: CHOICE 2-3 105.00-145.00. 68.00-73.50; SELECT 1-2 105.00-145.00. 61.00-67.00.

SLAUGHTER HEIFERS: 59 HEAD. TREND: STEADY TO 1.00 LOWER. CHOICE 2-3 85.00-100.00. 69.00-75.50; CHOICE 2-3 100.00-125.00. 74.50-80.00; CHOICE 4 ALL WEIGHTS 68.00-73.50; SELECT AND CHOICE 1-2 85.00-100.00. 66.00-71.50; SELECT AND CHOICE 1-2 100.00-125.00. 65.00-71.75.

HOLSTEINS: CHOICE 2-3 100.00-135.00. 68.50-71.75; SELECT AND CHOICE 1-2 100.00-135.00. 60.00-67.50.

SLAUGHTER BULLS: 30 HEAD. TREND: STEADY. YG#1 ALL WEIGHTS 62.00-70.00; YG#2 ALL WEIGHTS 54.00-61.50.

BULLOCKS: 3 HEAD. CHOICE 1-3 115.00-137.50. 67.00-72.50.

COWS: 335 HEAD. TREND: 2.00-2.50 HIGHER. BREAKING UTILITY AND COMMERCIAL 50.00-55.75; CUTTER AND BONING UTILITY 52.00-58.75; CANNER AND LOW CUTTER 50.00 & DOWN.

STOCKER AND FEEDER CATTLE RECEIPTS: 105 HEAD. TREND: STEADY. BEEF TYPES: 200-400 LBS. STEERS 80.00-105.00, BULLS 80.00-100.00, HEIFERS 70.00-84.00; 400-600 LBS. STEERS 75.00-87.50, BULLS 70.00-79.00, HEIFERS 70.00-80.00; 600-800 LB. STEERS 70.00-81.00, BULLS 60.00-72.50, HEIFERS 67.00-77.00; 800-975 LBS. STEERS 67.00-78.00, BULLS 55.00-62.00, HEIFERS 64.00-69.00.

HOLSTEINS & DAIRY CROSS: 200-400 LBS. STEERS 78.00-91.00, BULLS 74.00-89.00, HEIFERS 80.00-107.00; 400-600 LBS. STEERS 70.00-75.00, BULLS 60.00-72.00, HEIFERS 70.00-80.00; 600-800 LBS. STEERS 60.00-69.00, BULLS 55.00-62.00, HEIFERS 60.00-70.00, 800-975 LBS. STEERS 55.00-61.00, BULLS 50.00-57.50, HEIFERS 57.00-63.00.

CALVES: 602 HD. TREND: STEADY 2.00 HIGHER. CHOICE 150-300 LBS. 82.00-102.00; GOOD 150-300 LBS. 75.00-81.00; GOOD 100-150 LBS. 65.00-74.00; GOOD 80-100 LBS. 52.00-59.00; STANDARD 80-100 LBS. 45.00-51.00; STANDARD 80 LBS. & DOWN 44.00 & DOWN. CALVES RETURNING TO FARM: TREND: STEADY. HOLSTEIN BULLS OVER 100 LBS. UP TO 160.00, UNDER 100 LBS. UP TO 152.00; HOLSTEIN HEIFERS, OVER 100 LBS. UP TO 151.00, UNDER 100 LBS. UP TO 110.00; BEEF TYPE BULLS, OVER 90 LBS. UP TO 160.00, BEEF TYPE HEIFERS, OVER 90 LBS. UP TO 150.00.

SHEEP AND LAMBS: 44 HD. TREND: STEADY. CHOICE 80-100 LBS. 45.00-49.00; 100-120 LBS. 44.00-48.50; MEDIUM & GOOD ALL WEIGHTS 35.00-40.00; MEDIUM & GOOD, ALL WEIGHTS 40.00-46.50; CULL LAMBS 35.00-40.00.

SHEEP: EWES LEAN 19.00-25.50; EWES FAT 18.00-21.50; BUCKS 17.50-22.00.

GOATS: 97 HD. SMALL 18.00-34.00; MEDIUM 35.00-58.00; LARGE 59.00-89.00.

HOGS, SOWS & BOARS: 162 HD. HOGS: BARROWS & GILTS. TREND: 1.00 HIGHER. 210-250 LBS. 48.00-49.50; 250-260 LBS. 46.50-48.50; 260-270 LBS. 44.50-46.50; 270-300 LBS. 42.00-44.50. LIGHT HOGS: 140-180 LBS. 38.00-42.00; 180-210 LBS. 42.00-45.00. SOWS: TREND: STEADY. GOOD SOWS UNDER 400 LBS. 40.00-45.50, GOOD SOWS OVER 400 LBS. 40.00-45.00; CULL SOWS ALL WEIGHTS 39.00 & DOWN.

BOARS: TREND: STEADY. 180-210 LBS. 37.00-40.00; 210-260 LBS. 36.00-39.00; 260-300 LBS. 33.00-35.00, 300 LBS. & OVER 34.00-35.50.

SALE EVERY MONDAY AT 2:00 P.M. & EVERY THURSDAY AT 1:00 P.M.

HAY & STRAW SALE EVERY MONDAY & THURSDAY AT 11:30 A.M. SPECIAL FEEDER CATTLE SALE: FRIDAY, FEB. 1 AT 7:15 P.M. SPECIAL FEEDER PIG SALE: SATURDAY, JAN. 26 AT 1:00 P.M.

**Carlisle Livestock Market**

Carlisle, Pa.

Tuesday, Jan. 22, 1991

SLAUGHTER STEERS: SELECT & LOW CHOICE 71.25-77.75, STANDARD 64.25-69.00.

SLAUGHTER HOLSTEINS: SELECT 67.50-68.50, STANDARD 64.00 & DOWN.

SLAUGHTER HEIFERS: SELECT & CHOICE (LIGHTS) 68.50-76.25. SLAUGHTER COWS: GOOD

DEMAND; MOSTLY STEADY! BREAK UT & COMM 51.25-54.25, CUTTER & BONING UT 48.00-53.00; CANNER & LOW CUTTER 44.00-47.75, BIG MIDDLE 49.00-50.75; SHELLY 43.00 & DOWN.

SLAUGHTER FAT BULLS: YIELD GRADE NO. 2 61.50-61.75.

FEEDER CATTLE: FDR STEERS (ALL WTS) MEDIUM 75.00-80.00, HOLSTEINS 68.00-77.00; FDR BULLS (ALL WTS) MEDIUM 71.00-80.00.

VEAL CALVES: ACTIVE. CHOICE 95.00-118.00, GOOD 75.00-94.00, STANDARD 48.00-70.00, LIGHT/WEAK 47.00 & DOWN.

FARM BULLS: 135.00-159.00, FARM HEIFERS 110.00-132.50.

HOGS: BARROWS & GILTS; \$2.00 HIGHER. US NO. 1-3 (210-260 LB) 50.00-51.50, 2&4 (ALL WTS) 49.00-49.50.

SOWS: \$1.00 HIGHER; OVER 450 LB 41.50-43.25, UNDER 450 LB 42.00-44.00, 2&4'S (ALL WTS) 40.00-41.00.

BOARS: HEAVY 34.50-36.75. FEEDER PIGS (BY THE HEAD) 1 LOT 28 LBS. 45.00.

SHEEP: EWES 18.00-29.00. LAMBS: GOOD (50-70 LB.) 70.00-80.00, GOOD (70-110 LB.) 48.00-58.00, MEDIUM (ALL WT) 40.00-47.00.

GOATS: (BY THE HEAD) LARGE 75.00-90.00, SM./MED. 27.50-60.00.

SALE EVERY TUESDAY EVENING 5:00 P.M. RABBITS, POULTRY & EGGS 7:00 P.M. LIVESTOCK.

**HAY, STRAW & GRAIN SALE**  
Every Thursday at 1 p.m.  
Auction will continue all year long  
Vintage Sales Stables, Inc.

(Rt. 30, 10 miles east of Lancaster in Paradise, PA)

For info. 717-442-4181 business 215-458-8518 home

L. Robert Frame, Sr. president  
Glenn S. Frame Mgr.

**CRIPPLED AND DISABLED COWS, STEERS & BULLS**

Slaughter Under USDA Inspection

FREE CALL  
1-800-234-COWS (2697)  
215-286-9400  
Wayne Taylor

Lebanon, Berks, Lancaster & Chester Co.

**HORSE SALE**  
FRI. FEB. 1, 1991  
10:00 A.M.  
Tack 9:00 A.M.

**NEW HOLLAND SALES STABLES INC. THE ACTION AUCTION**

LIVESTOCK IS OUR ONLY BUSINESS

**MONDAY**

SLAUGHTER HOGS

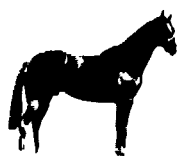


**EARLY BIRD HOG SALE**  
8:00 A.M.

Sell Your Hogs At New Holland Sales Stables, Inc. See them weighed, sold and pickup your check.

**10:00 AM**

HORSES MULES



**1:30 PM**  
BEEF SALE



SHEEP



CALVES

**WEDNESDAY**

DAIRY 11:00 AM COW SALE 12:00 NOON COWS



We have the usual run of 50 to 100 Heifers, all ages. Loads of fresh cows and springers from our regular shippers. Also some local fresh cows and springers.

**1:30 P.M.**  
FEEDER PIG SALE

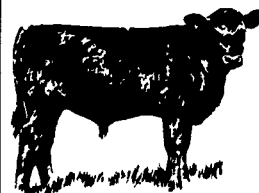


Pigs are accepted after 6:30 A.M. State graded from 8 to 12 Dairy Barn and Feeder Pig Barn are cleaned and disinfected weekly for your protection.

**THURSDAY**

**Beef Auction**  
10:00 A.M.

BULLS STEERS BEEF COWS



STOCKERS & FEEDERS

**12:30 P.M.**

SHEEP GOATS CALVES



**NEW HOLLAND SALES STABLES, INC.**

12 Miles East of Lancaster Off Route 23, New Holland, Penna.

**MANAGERS**

Norman & David Kolb - 717-397-5538

**Field Representatives**

Luke Eberly - 215-267-6608 738-1865

Homer Eberly - 215-267-3047

**Sale Barn Officer Manager**  
Roger Floyd - 717-354-4341

**Order Buyer**  
Paul Good - 215-445-6662

**Feeder Pig Representative**  
Mel Hoover - 717-354-8397