

30 YEARS AGO

THIS WEEK

-John Kitch, Reinholds R1, district forester, was promoted in grade by the Pennsylvania Department of Forests and Waters Tuesday.

The promotion was one of 25 in the state's 20 forest districts, Secretary Maurice Goddard announced. The program of promotion and transfers throughout the state is planned to assist small woodlot owners to grow trees as a crop, Goddard said.

The program is aimed at increasing timber sales from state forests by 50 per cent.

There were two million acres in state owned forests and 1960 sales were nearly \$700,000.

-Roy B. Herr, Pennsylvania Poultryman of the Year in 1959, was honored by The Lancaster County Poultry Association Monday night.

Herr was one of the founders of the association and served as president for 12 years. He was vice president during the first year of operation and moved to the top spot when the organization elected officers for the second year. He has also served as president of Pen-

sylvania Poultry Federation.

-An Elizabethtown R3 resident has been appointed to the Pennsylvania State University Extension Service Staff as an assistant county agent, it was announced this week.

Gerald H. Hess, who graduates from PSU today, will serve in Northampton County beginning Feb. 1, according to Extension Service Director, Dr. H. R. Albrecht.

Hess will be associated with County Agent Samuel D. Lewis in the Eastern office.

Hess, the son of Mr. and Mrs. Paul Hess, is a graduate of Elizabethtown High School. He majored in animal husbandry at PSU.

-Henry S. Mellott, formerly of Brezewood, Bedford County, began work this week with the Lancaster County Soil Conservation District.

Mellott, recently released from service in the army, reported for work on Monday. He will assist the office as a soil conservationist on farms requesting such service. His duties will include farm planning for soil and water conservation.

Farm Sells For Half Million



BROWNSTOWN (Lancaster Co.)—A 40 acre limestone farm nestled beside the developing outskirts of Brownstown in the heart of Lancaster County, sold for \$12,550 per acre on Monday. The total price was \$502,000.

Zoned agricultural, the farm owned by Leroy Z. Zimmerman

had a frame house, large bank barn with feed lot, liquid manure storage and a bunk feeder for 100 head of steers. Other buildings include a new 50' x 64' insulated machine shop, two stave silos, grain bins and a corn barn. The farm features sewer connections up to the farm, but developers were out of the

bidding because of the ag zoning. But a number of farmers were in the bidding and David M. Zimmerman was the successful bidder.

More than 400 neighbors and buyers braved the cold and crowded into the shop for the sale. Paul E. Martin Auction Service conducted the sale.

Pseudorabies Program

(Continued from Page A1)

• Vaccination costs will be borne by the producer.

• The department will, subject to available funding, pay the herd veterinarian at the state's fee base rate for obtaining blood samples for pseudorabies tests required by the approved plan.

• The department will provide coordination with state and federal PRV regulations, will make application for available funds, and will encourage private veterinary practitioners to provide advice and assistance to swine producers participating in the program.

• A technical advisory committee will be established by the Pennsylvania Swine Producers Pseudorabies Eradication Committee to oversee the program,

make recommendations for program adjustment as necessary, and make regular progress reports.

• The Department will assign a Bureau of Animal Industry veterinarian to coordinate the bureau and industry area vaccination program activities and will keep all necessary records to meet federal and national eradication plan requirements.

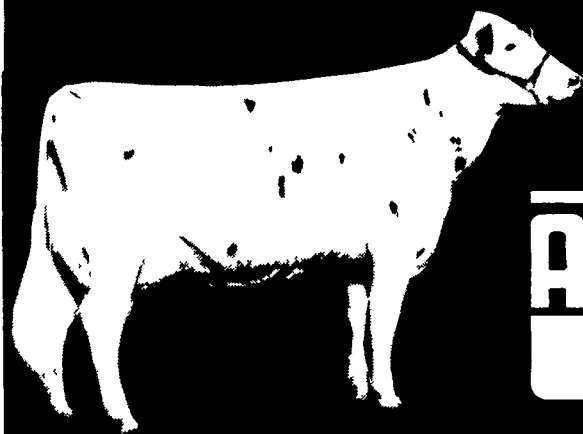
• The department will seek ways and means to facilitate marketing of PRV-quarantined swine to maximize market value and to assure biosecurity necessary to minimize the spread of PRV.

Pseudorabies is a herpes virus disease primarily affecting swine. It can be transmitted to almost all other warmblooded animals except man.

Milk's got more!

ABS BULLS GO UP

29H5730



MELWOOD



AMERICAN
BREEDERS
SERVICE

2nd Crop
Daughters
Quiet Critics

	TPI	Pro \$	Type	Rel F
Jan. 91	974	258	1.44	92%
July 90	889	250	1.13	86%
Increase	+85	+8	+0.33	+6%

You're Invited



NC+ Days

Pick Your Day

Tues., Jan 29 - Bonanza Steak House
At Ephrata or

Wed., Jan. 30 - Midway Diner -
Berks County,

501 North to 78 East, exit 5 or 419 North to 78 West, Exit 6

9:00 AM Registration, coffee, doughnuts

Meeting starts at 9:30 Sharp

Free Lunch At Noon

Topics - Update pesticide license

Joe Reed - From B.A.S.F. Chemical Company

Rod Dodds - On Corn, Alfalfa, Sorghum,
Soybean Varieties, NC+ hay and silage
inoculants from Biotal

Meeting Adjourns at 2:30 P.M.

Elvin M. Hursh 310 Wood Corner Rd. Lititz, PA 17543 717-733-3538	John Auker RD 1 Box 295 Myerstown, PA 717-933-5224	Melvin M. Martin 429 E-28 Division Highway Lititz, PA 717-626-7138
--	--	--

Clarence B. Mull RD 6 Box 835 Lebanon, PA 717-865-2037	Leon B. Wessner RD 1 Box 352 Kutztown, PA 215-285-6246
--	--

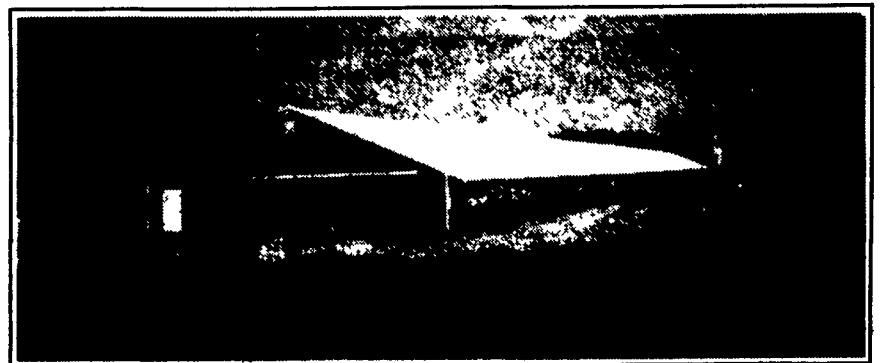
Ron Dodds - District Sales Manager
RD 3 Box 180, Mifflintown, PA 17059-9577



LOOKING FOR EXTRA
CASH FLOW FOR YOUR
FAMILY FARM?



EXCELLENT CONTRACTS AVAILABLE FOR HOGS & POULTRY



★ A STEADY MONTHLY
INCOME

★ A GUARANTEED
LONG TERM CONTRACT

Check Our Prices
On Quality
Buildings And
Equipment!

Full Line Of Parts In Stock
For Your Poultry &
Hog Needs

WE SHIP UPS

SWINE & POULTRY SYSTEMS SPECIALISTS

FARMER BOY AG.

24 Hour Service

717-963-7965