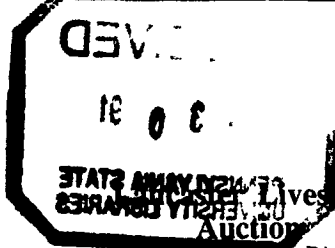


Lancaster Co. Livestock Market Auctions



Lancaster County Livestock Auction

Lancaster, Pa.
 JANUARY 22, 1991
 Cattle Calves Hogs Sheep Goats
 MONDAY'S AUCTION

939 77 300 1190 382
 LAST MONDAY'S AUCTION
 969 80 225 992 418

LAST YEAR'S AUCTION
 1051 82 355 771 323

CATTLE: Slaughter steers firm to 50 higher; slaughter heifers steady; cows firm to 1.00 higher; bullocks steady; bulls 1.00-2.00 higher. Supply included 50% slaughter steers, 19% slaughter heifers, 21% cows, and 10% bulls.

SLAUGHTER STEERS: Choice 2-4 mainly 3 1035-1450 lb 78.25-81.25; few Choice and Prime 2-3 1100-1325 lb 81.50-82.75; Select and low Choice 2-3 1100-1500 lb 74.00-78.25; few Select 2-3 1050-1425 lb 70.00-75.50.

HOLSTEINS: High Choice and Prime 1250-1700 lb 73.50-75.75; Choice 1200-1650 lb 68.00-73.00; Select 1140-1500 lb 62.00-67.00

SLAUGHTER HEIFERS: Choice 2-3 950-1250 lb 76.00-79.75; few Choice 2 1040-1390 lb 80.50-80.85; Select 2-3 900-1250 lb 72.00-77.00; Select and Choice 2-4 1200-1450 lb Heiferettes 56.00-64.50.

COWS: LO DRESSING BULK HI DRESSING Breaking Utility & Commercial 2-3 51.00-54.50 54 50-58 00 Cutter & Boning Utility 1-2 48.00-50.00 50 50-54 00 54.00-55.00 Canner and low Cutter 46.00-48.00

BULLOCKS: Few Choice 2-3 1200-1400 lb 65.00-68.50, five head 70.25-73.50; few Select 1-3 1100-1300 lb 62.00-65.00.

BULLS: Yield grade 1 1300-2000 lb 63.50-69.00, 10 head 71.50-75.50, Yield grade 2 1050-1600 lb 59.75-63.50

VEAL CALVES: Vealers steady; slaughter calves 2 00-5 00 higher Demand good for Holstein bulls to return to farm

VEALERS: Couple Choice 180-260 lb 100.00-110.00, high Good and low Choice 150-300 lb 75.00-85.00, 80-110 lb 44.00-55.00; Standard and low Good 60-85 lb 35.00-45.00

SLAUGHTER CALVES: Good and Choice 280-425 lb 75.00-85.00

RETURNED TO FARM: Bulk 90-125 lb Holstein bulls 110.00-130.00; small frame 85-115 lb 85.00-110.00.

HOGS: Barrows and gilts firm to 50 higher, sows steady, instances 1.00 lower on weights under 500 lb

BARROWS AND GILTS: US 1-2 210-245 lb 49.50-50.50, US 1 215-235 lb 51.00-52.00 US 1-3 210-255 lb 49.00-49.50

SOWS: US 1-3 300-500 lb 38.00-40.50, 500-650 lb 40.50-43.00.

BOARS: All Weights 35.00-37.00

SHEEP: Woolled lambs 3 00-5 00 lower, slaughter ewes steady

WOOLED LAMBS: Choice 80-110 lb 53.00-58.00, 120-140 lb 42.00-52.00,

Vintage Livestock

Paradise, PA
 Jan. 22, 1991

CATTLE 565...USDA...(Supply included 23% steers and 69% cows). Compared with Monday's market. Slaughter steers small supply sales .50 to fully 1.00 higher, Heifers scarce; Cows firm to 1.00 higher, Bulls not fully tested Choice 2-3 few 4, 1100/1450 few 1535/1645 lbs. sl. steers 78 85-82, few 82-82 50, Choice & Prime 2-3, 1200/1450 lbs. 82.25-83.50, couple 84.10&84.75, Select & low Choice 2-3 1100/1450 lbs. 76.60-79.00; few Choice Holsteins 1390/1430 lbs. 71.75-72.25, Select 1300/1550 lbs. 65.00-68.75. Couple Choice 2-3 1050/1150 lbs sl heifers 78 00&79 50 Breaking Utility & Commercial cows 2-3, 51 00-55, high dressing 55 00-56 75, several 1475/1850 lbs 56 50-59 50, Cutter & Boning Utility 1-2, 50 00-54 50, high dressing 54 50-56 75, low dressing 48 00-50, Canner & Low Cutter 46 00-48 50, low dressing 45 00-46 00 Couple Yield Grade No 1, 1775/1960 lbs sl bulls 64 75 66 75, couple No 2, 1250/1750 lbs 55 50-59 00

CALVES 765 Supply included 19 head over 130 lbs, and 631 in graded sale of which 87% sold to return to farm Vealers steady Few Choice 150/425 lbs 84 00-89 00, couple Good 150/245 lbs. 64 00-77 00, High Good & low Choice 80/105 lbs 40 00-50 00, Standard and low Good 60/85 lbs 20 00-40 00 Farm Calves Holstein Bulls 120/125 lbs. 135 00-138, 95/115 lbs. 140 00-146 00, 100/105 lbs 150 00, 85/95 lbs 131 00-138 00, Small frame 100/115 lbs 126 00-130 00, 85/95 lbs 104.00-120.00, Hol Heifers 100/115 lbs 136 00-137, 90/95 lbs 114.00, Small frame 80/100 lbs 97 00-103 00, 70/75 lbs 50 00

SHEEP 0 No Market Test - all cwt
GOATS 3 No Market test

Dewart Livestock

Dewart, Pa.
 January 21, 1991

Report Supplied by PDA

STEERS 60.00-76.75
HEIFERS TOO FEW TO QUOTE
GOOD COWS 48.00-56.00.
CANNERS AND CUTTERS 40.00-46.00

BULLS 60.00 63.25
VEAL 90-190 LBS 80.00-172.50,
70-90 LBS. 45.00-80.00
HOGS 45.00-48.40
SOWS 39.00 43.75.

FEEDER PIGS TOO FEW TO QUOTE

Good to low Choice 70-100 lb 50.00-53.00

SLAUGHTER EWES: Utility and Good 15.00-35.00, few 35.00-40.00, Yearlings and two-year olds 35.00-45.00

GOATS: All goats sold by the head Large 75.00-100.00, few thin 50.00-75.00, Medium 45.00-55.00, Small, mainly kids, 20.00-35.00, few 35.00-40.00

Lancaster Livestock

Wed., Jan. 23, 1991
 Cattle Calves Hogs Sheep Goats

Wed's Auction
 21 0 212 0 0

Last Wed's Auction
 32 2 256 0 0

Last Year's Auction
 40 3 295 0 0

CATTLE: Insufficient volume of any one class to test trend..
VEAL CALVES: No market test.
HOGS: Small supply barrows and gilts firm to 50 higher; sows 1.00-1.50 higher.
BARROWS AND GILTS: US 1-2 210-245 lb 50.00-51.00.
SOWS US 1-3 300-500 lb 39.00-42.00 500-650 lb 42.00-44.00.

BOARS: All weights 36.00-37.00
SHEEP: No market test.
GOATS: No market test

Mercer Livestock

Mercer, PA
 Jan. 22, 1991

CATTLE 155...PDA...Compared with last weeks market: Slaughter steers 1.50 to 2.00 lower; Cows 1.50 higher. Choice slaughter steers 76.50-79.60, Select 71.50-76.00; few Choice Holstein 70.00-72.00, Standard 68.00-70.50. Choice sl heifers 74.00-76.50, one high Choice 78.25, Select 70.00-74.00, few Standard 58.00-65, few Utility 52.00-57.00. Breaking Utility & Commercial sl cows 49.00-55.00, couple 56.60&57, Cutter & Boning Utility 46.50-51.00, Canner & low Cutter 38.00-47.00, Shells down to 20.00. Few Yield Grade No. 1, 1200/1700 lbs sl bulls 57.00-64, one No 2, 1120 lbs 53.75. Feeder Cattle Few Medium No 1, 350/400 lbs. heifers 70.00-77.00

CALVES 94. Standard and Good 90/120 lbs vealers 50.00-64.00, 60/80 lbs 35.00-50.00, few Utility 45/55 lbs. 29.00-36.00 Farm Calves No. 1, Holstein Bulls 90/125 lbs 120.00-160.00, No 2, 90.00-120.00, few Hol Heifers 90/130 lbs. 85.00-140.00. Few Beef cross 85/125 lbs. bulls and heifers 95.00-150.00.

HOGS 140. Barrows and Gilts 1.50 to 2.00 higher. US No 1-2 220/255 lbs. barrows and gilts 52.35-53.10, 1-3 225/260 lbs 51.10-52.50, lot 2-3 308 lbs 47.00 US No. 1-3 400/610 lbs sows 48.50-51.00, 2-3 460/750 lbs. 46.00-48.50 Boars 30.00-37.00.

FEEDER PIGS 0 Insufficient volume for a market test - per head

SHEEP 0 No market test - all cwt.
GOATS 0 No market test --- all per head



New Holland Livestock Auction

Lancaster, Pa.
 Thursday, January 24, 1991

Cattle Calves Sheep Goats

Today
 920 634 71 14

Last Thursday
 782 629 66 65

Last Year
 822 674 16 35

CATTLE: Slaughter steers mostly steady, some weakness on Select and low Choice; slaughter heifers steady; cows steady; bullocks not fully tested; bulls steady. Supply included 44% slaughter steers and 42% cows.

SLAUGHTER STEERS: Few Choice and Prime 2-3 1125-1425 lb 82.75-84.00, couple 84.75-85.25; Choice 2-3 few 4 1050-1450 lb 79.00-82.00, few 82.00-82.75; Choice 3 few 4 1450-1600 lb 77.00-80.50; Select and low Choice 2-3 1025-1425 lb 76.50-80.00. **HOLSTEINS:** Choice 1250-1500 lb 68.50-71.00; couple High Choice and Prime 1275-1400 lb 72.00-74.00; Select 1050-1475 lb 64.00-68.00.

SLAUGHTER HEIFERS: Choice 2-3 950-1150 lb 76.60-79.00; few Choice 2 1100-1320 lb 80.25-81.75.

COWS: LO DRESSING BULK HI DRESSING Breaking Utility & Commercial 2-3 50.50-55.50 55.50-58.50. Cutter and Boning Utility 1-2 49.00-50.00 50.00-54.75 55.00-56.75. Canner and low Cutter 45.00-46.50 46.50-48.50.

BULLOCKS: Couple Choice 2-3 1100-1325 lb 68.50-70.00.

BULLS: Yield grade 1 1350-2060 lb 63.00-67.00; Yield grade 2 1050-1450 lb 61.00-64.00.

VEAL CALVES: Vealers steady. Demand good for Holstein bulls to return to farm.

VEALERS: Choice 130-320 lb 89.00-99.00, couple 250-275 lb 101.00-105.00; high Good and low Choice 145-410 lb 72.00-80.00, 80-110 lb 44.00-50.00; Standard and low Good 65-85 lb 40.00-45.00

RETURNED TO FARM: Bulk 90-125 lb Holstein bulls 120.00-155.00, with several late 155.00-162.00, 80-90 lb 110.00-130.00, small frame 85-115 lb 85.00-120.00, few 80-90 lb 70.00-85.00.

SHEEP: Woolled lambs and slaughter ewes steady.

WOOLED LAMBS: Choice 65-80 lb 62.00-76.00, few 50-60 lb 85.00-91.00, few 85-100 lb 53.00-59.00.

SLAUGHTER EWES: Utility and Good 16.00-27.00.

GOATS: All goats sold by the head. Medium 33.00-50.00, couple Large 60.00-68.00, individual 92.00; few Small 18.00-30.00.

Lancaster County Weekly

Lancaster, Pa.
 Friday, January 25, 1991

Cattle Calves

This Week
 2600 1470

Last Week
 2820 1527

Last Year
 2737 1592

CATTLE: Slaughter steers 1.00-2.00 higher; slaughter heifers steady; cows firm to mostly 1.00 higher; bullocks fully steady; bulls 1.00-2.00 higher. Supply included 39% slaughter steers, 9% slaughter heifers, 38% cows, 6% bulls, with the balance feeders.

SLAUGHTER STEERS: Choice and Prime 2-3 1125-1450 lb 82.25-83.75, few 84.00-85.25; Choice 2-3 few 4 1025-1450 lb, few 1500-1650 lb 78.85-82.00, few 82.00-82.75; Choice 3-4 1450-1600 lb 77.00-80.50; Select and low Choice 2-3 1025-1450 lb 76.00-79.00, few 79.00-80.00; Select 2-3 1050-1425 lb 70.00-75.50. **HOLSTEINS:** High Choice and Prime 1250-1700 lb 72.50-75.75, Choice 1200-1650 lb 68.00-72.50; Select 1050-1500 lb 62.00-68.00.

SLAUGHTER HEIFERS: Choice 2-3 950-1250 lb 76.00-79.75; few Choice 2 1040-1390 lb 80.25-81.75; Select 2-3 900-1250 lb 72.00-77.00; Select and Choice 2-4 1200-1450 lb heiferettes 56.00-64.50.

COWS: LOW DRESSING BULK HIGH DRESSING Breaking Utility & Commercial 2-3 50.50-55.50 55.50-58.50, Several 1475-1850 lb 56.50-59.50. Cutter and Boning Utility 1-2 48.00-50.00 50.00-54.75 55.00-56.75. Canner and low Cutter 45.00-46.00 46.00-48.50.

BULLOCKS: Few Choice 2-3 1200-1400 lb 65.00-70.00, five head 70.25-73.50; few Select 1-3 1100-1300 lb 62.00-65.00.

BULLS: Yield grade 1 1300-2060 lb 63.00-69.00, 10 head 71.50-75.50; Yield grade 2 1050-1600 lb 59.75-63.50.

VEAL CALVES: Vealers steady, slaughter calves 2 00-5 00 higher. Demand good for Holstein bulls and heifers to return to farm.

VEALERS: Choice 130-425 lb 84.00-99.00, couple 180-275 lb 100.00-110.00, high Good and low Choice 150-300 lb 72.00-85.00, 80-110 lb 42.00-52.00; Standard and low Good 60-85 lb 20.00-40.00

SLAUGHTER CALVES: Good and Choice 280-425 lb 75.00-85.00.

RETURNED TO FARM: Bulk 90-125 lb Holstein bulls 120.00-155.00, few 155.00-162.00, 80-90 lb 104.00-130.00, small frame 85-115 lb 85.00-120.00, few 80-90 lb 70.00-85.00.

VINTAGE SALES STABLES, INC.



COMPETITION IS THE ADVANTAGE MARKET YOUR LIVESTOCK THE VINTAGE WAY



TUESDAY 11:00 A.M.

7:30 P.M.

SLAUGHTER CATTLE AUCTION— STEERS, BULLS, HEIFERS, COWS, FEEDER CATTLE

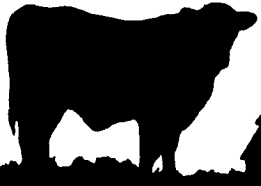
CALVES, SHEEP, GOATS * GET CALVES IN EARLY— OUR STATE GRADER STARTS AT 1:00 P.M.

★ NEW ★ FEEDER & STOCKER ORDERS NOW BEING TAKEN

"A VINTAGE CUSTOMER IS A HAPPY CUSTOMER"

L. ROBERT FRAME, SR., PRESIDENT
 GLENN S. FRAME, MANAGER
 BUS (717) 442-4181
 BUS (717) 768-8204
 HOME (215) 458-8518
 IRWIN MARTIN, FIELD REP. (717) 733-7434
 KENNETH E. HERSHEY, FIELD REP. (717) 442-4874

TRUCKING SERVICE AVAIL.-LOCAL & LONG DISTANCE (RT. 30, 10 MILES EAST OF LANCASTER IN PARADISE, PA)



LEBANON VALLEY LIVESTOCK MARKET, INC.

1 mile East of Fredericksburg along Rt. 22
PHONE JONESTOWN 865-2881

Flea Market Auction every Tuesday at 12:30. Tools, Eggs, Produce, etc
 Buyers & Sellers Welcome

B&R CATTLE CO.
 RD 1, Marietta, PA 17547
 Office Phone: (717) 653-8164
 Specializing In Stockers & Feeders
JOHN BOWMAN
 Ph (717) 653 5728
RON RANCK
 Ph (717) 656-9849

HAY, STRAW & CORN — SALE —
 Every Friday At 11 AM



GREEN DRAGON MARKET & AUCTION

RD No. 4 Ephrata, Pa. 717-738-1117
 1 mile North of Ephrata on N. State St.
 Out of State Buyers - Cash or Certified Check Only



Open 24 hours a day
 365 days a year
 (717)394-2611

AUCTIONS

MONDAY
 9:00 A.M. - Slaughter Bulls, Heifers, Steers, Cows
 10:00 A.M. - Goats, Veal Calves, Lambs
 12 Noon - Slaughter Hogs
WEDNESDAY
 8:00 A.M. - Slaughter Hogs
 10:00 A.M. - Slaughter Bulls, Heifers, Steers, Cows
 11:00 A.M. - Veal Calves, Lambs
FRIDAY
 11:00 A.M. - Stocker and Feeder Cattle
SATURDAY
 8:00 A.M. - Slaughter Hogs

Next Feeder Cattle Sale
 Friday, Feb. 8 - 11:00 A.M.

LANCASTER STOCKYARDS, INC.
 1147 Litz Pike, Lancaster, Pennsylvania 17601
 Serving The Community For 90 Years