



Phila. Fruit Market
Jan. 23, 1991

CLEAR 16-21.
GRAPEFRUIT STEADY FL 4/5 buctn Red 23s 12.00-13.50 27s 12.00-14.00 mos 13.00-13.50 fair cond 6.00 32-36s 12.00-12.50 occ 11.50 40s 10.00-12.00 48s 10.00-11.00 mos 10.00-10.50 fair qual 23-27s 11.50 32-36s 10.50 40s 9.50 48s 8.50 White 23s 9.00 27-36s 9.50-10.00 mos 10.00 36s 9.50-10.00 fair appear 7.00 48s 8.00-9.00 Indian River Red 23-27s 14.00-14.50 mos 14.50 32s 13.50 36s 12.50-13.00 40s 11.50-12.50 48s 10.50-11.00 fair qual 32-36s 9.00 40s 8.50-9.00 48s 8.50 56s 7.50.
LEMONS STEADY CA ctn 95s 22.00 115s 22.00 one label 30.00 140s 20.00 one label 26.00 165s 21.00-22.00 200s 18.00 fair qual 115-165s 20.00 200s 18.00-18.50 AZ ctn 140s 20.00-24.00 165s 19.00-21.00 fair qual 95s 20.00 115s 22.00 140s 19.00-19.50 165s 19.00.
LIMES STEADY 10-lb ctn Persian Seedless type FL fair appear 48-63s 7.00 MEXICO 48s 6.50-7.50 fair appear 5.00-6.00 54s 6.50-7.50 63s 6.50.
MISCELLANEOUS CITRUS SPAIN 10-kilo crt Clementine 140s 21.00.
ORANGES STEADY CA ctn Navel 56s 32.00 72s 30.00 88s 26.00-28.00 113s 20.00-22.00 some 17.00 138s 18.00 163s 14.00 fair qual 40-88s 18.50 113s 16.00-16.50 138s 12.00 FL 4/5 buctn Navels 48-56s 14.00-15.00 64s 14.00-14.50 80s 12.50-13.00 100s 11.00 Pineapple 64s 11.00-13.50 mos 11.00 80s 11.00-13.50 mos 11.00 fair cond 7.00-8.00

100s 10.00-12.50 fair cond 7.00-8.00 125s 11.00-11.50 Hamlin fair cond 80s 8.00-9.00 100s 5.00-7.00.
TANGELOS STEADY FL 4/5 buctn Orlando 56s 12.50 64s 12.50 ord cond 5.00-6.00 80s 11.50-12.00 100s fair cond 5.00-6.00 125s 10.00 Minncola 36s few 13.50 40s few 13.50 fair cond 9.50 48s 13.50-14.00 fair cond 9.50 54s 13.50 64s 13.50-14.00 '80s 12.00-14.00 100s 11.00-12.00 few 13.50
TANGERINES STEADY FL 4/5 buctn & crt Honey type 80s 23.00 fair cond 16.00-18.00 100s fair cond 16.00-18.00 120s 20.00 fair cond 13.00-14.00 150s fair cond 10.00 176s 15.00 fair cond 10.00 Robinson 120s 25.00 180s 22.00 210s 18.00 Sunburst 120s 26.00 150s 24.00
TEMPLES STEADY FL 4/5 buctn & ctn 64s 15.00 fair cond 9.50 66s fair cond 8.00-9.00 ord cond 3.00-5.00 80s 15.00 fair cond 9.50-10.00 100s 9.00-10.00 ord cond 3.00-5.00 120s fair cond 8.00 125s 9.50.
APPLES STEADY ctn tray pack WA Red Delicious USExFcy 80s 16.00 88s 16.00-18.00 100s 16.00-17.00 113-138s 16.00 WAFcy 72-125s 15.00 Golden Delicious USExFcy 80-88s 18.00 fair cond 10.00 100s 17.00 fair cond 10.00 Granny Smith US:XI- cy 80s 19.00 88s 19.00-22.00 100s 18.00-20.00 113s 17.00 Red Rome WAFcy 56s 17.00-18.00 Winesap WAFcy 64s 17.00-18.00 CA Granny Smith USExFcy 80-88s 12.00 113s 10.00 ID Red Delicious IDExFcy 80-88s 20.00 100s 18.50 113s 17.50 125s 16.50 USExFcy 100s 17.00 ctn cell pack

NY US#1 McIntosh 80s 11.00 100s 10.00 120s 9.00 ctn 12-3 lb film bags PA 2-1/4" & up USFcy Red Delicious & Red Stayman 8.50 CONTROLLED ATMOSPHERE STORAGE WA Red Delicious WAEXFcy 64s one label 26.00 72s 20.00-21.00 one label 26.00 80s 24.00 88s 21.00-24.00 mos 24.00 100s 20.00-22.00 113s 21.00 138s 14.00 USExFcy 88-100s 18.50 Golden Delicious WAEXFcy 80s 23.00 88s 22.00-23.00 100s 21.00 113s 17.50 USExFcy 88s 18.00-18.50 100s 17.00-17.50 WAFcy 64s 20.00-21.00.
APPLE-PEARS OFFERINGS INSUF TO QUOTE.
APRICOTS CHILE 2-lyr lug Katy 102s poor cond 3.00
AVOCADOS ABOUT STEADY CA 1-lyr Bacon 20s 11.00 2-lyr ctn Hass 40s 38.00 48s 33.00-36.00 60s 30.00.
BANANAS Imports ctn approximately 40-lb 14.50 fair qual 12.00 film wrpd 14.50 Institutional pack Petite 150s 11.25.
BLACKBERRIES GUATEMALA flats 12-1/2 pt film wrpd cups via air 16.00 BLUEBERRIES CHILE flats 12-6 oz. film wrpd cups via air med 27.00.
CHERRIES NO SUPPLIES.
COCONUTS DOMINICAN REPUBLIC sacks 40s few 14.00.
CRANBERRIES NO OFFERINGS.
GRAPES-TABLE STEADY CA 23-lb lug Emperor 12.00 20-lb lug wrpd Emperor fair cond 11.00 film bags Red Seedless fair cond 8.00-10.00 CHILE 18-lb lug wrpd Thompson Seedless 17.00-18.00 mos 18.00 fair cond 8.00-10.00 lge 20.00 sml 14.00-16.00 Perlette fair cond 11.00-12.00 Flame Seedless 19.00-21.00 mos 20.00-21.00 sml 17.00-18.00 Beauty Seedless fair cond 13.00 Black Seedless 18.00-19.00 film bags Flame Seedless 19.00-20.00.
KIWI FRUIT OFFERINGS LIGHT CA flat ctn 36-39s 7-7.50.
MANGOS TOO FEW SALES TO QUOTE.
NECTARINES CHILE 2-lyr lug Red Diamond 60s 16.00 Summer Grand 68s 13.00 Sun Grand 40-48s 18.00 50-52s 15.00 few 18.00 68s 13.00 Firebrite 66s 13.50 May Grand 48s 15.00 60s 12.00-13.00.
PAPAYAS TOO FEW SALES TO

QUOTE.

PEACHES CHILE 2-lyr lug Flamecrest 50s 14.00 60s 12.00-13.00 Spring Crest 70s fair cond 5.00-6.00 Red Top 40-50s 16.00 60s 14.00 Flavor Crest 48s 15.00.
PEARS STEADY WA 4/5 buctn wrpd US#1 D'Anjou 80s 23.00 fair cond 15.00 90s 21.00-23.00 mos 23.00 100s 21.00-22.00 mos 22.00 110s 20.00-21.00 mos 20.00 120s 18.50-19.00 135s 18.50 150s 17.00 Bartlett 165s ord cond 6.00-8.00 Red Bartlett ord cond 135s 6.00-10.00 OR 4/5 buctn wrpd Bosc US#1 110s fair cond 15.00-18.00 CONTROLLED ATMOSPHERE STORAGE OR 4/5 buctn wrpd Bosc US#1 80-90s 30.00 100s 28.00 110s 26.00 120s 25.00 135s 20.00.
PERSIMMONS OFFERINGS INSUF TO QUOTE.
PINEAPPLES HAWAII ctn via air 6s 11.75-12.00 COSTA RICA 2-lyr ctn 8-14s 13.00.
PLUMS STEADY CHILE 2-lyr lug & ctn Black Amber 60s few 18.00 72-78s 12.00-14.00 some hias 15.00 80-88s 11.00-12.00 some hias 16.00 90-96s 9.00-10.00 some hias 13.00 100s 13.00 Santa Rosa 78s 16.00.
POMEGRANATES NO OFFERINGS.
RASPBERRIES LOWER CHILE flats 12-1/2 pt film wrpd cups via air Red 20.00. STRAWBERRIES LOWER flats 12-1 pt bkt FL mos med fair cond 12.00 CA med 27.00 MEXICO via air med-lge 25.00 lge with stems 33.00.
CANTALOUPS OFFERINGS INSUFFICIENT TO QUOTE
HONEYDEWS HIGHER 2/3 ctn ECUADOR 5-6s 12.00 8s 11.00 9s 9.50 EL SALVADOR 5-6s 12.50 8s 11.50.
MISC MELONS OFFERINGS INSUFFICIENT TO QUOTE
WATERMELONS TOO FEW SALES TO QUOTE.

Phila. Potato & Onion

Jan. 23, 1991

CLEAR 16-21.
ONIONS-DRY YELLOW JUMBO LOWER, OTHERS ABOUT STEADY 50-lb sacks US#1 or generally good qual and cond Yellow unless otherwise stated ID-OR Spanish Hybrid jumbo 900-11.00 fair cond loas 700 White jumbo 40.00 25-lb sks Red jbo 700-800 mos 800 med 500 UT Spanish hybrid type jumbo 10.50-11.00 NV Spanish hybrid type White jumbo 42.00-44.00 NY Globe type lge 850-900 mos 850 medium 550-650 mos 600 few 700 24-2 lb mesh sks 8.00 few 7.50 25-lb sks Red med-lge 500-700 med 400-600 MI Globe type med 6-650 25-lb sks Red lge 650.
POTATOES STEADY 50-lb sacks US#1 size A washed or brushed unless other-wise stated ROUND WHITES new crop NYLI 550-575 lge 650-700 few loas 575 baled paper sks 5-10 lb 650-675 10-5 lb 750 ME 5-550 mos 500 lge 625-650 baled paper sks 10-5 lb 750 PA fair appear 400 NJ fair appear 4-450 CANADA CD#1 Prince Edward Isle 500-600 mos 5-550 lge 6-650 mos 650 New Brunswick 500 lge 600 ROUND REDS MN/ND 850-900 mos 900 sz B 11.00-12.50 RUSSETS 50-lb ctn count 1D 70-80s 12.00-13.00 90s 11.00-12.00 100s 10.00-11.00 few 9.50 10 oz min US#2 10.00-10.50 100-lb sks 10 oz min US#2 13.50 baled 10-5 lb film bags non sz A 10.00-11.00 WI Norkotah 70-80s 9-950 90s 8-850 100s 7-750 120s 700 CANADA CD#1 New Brunswick Norkotah 70-80s 900 90s 800 100s 700



When things run well, we take them for granted...

...water flows when the tap is turned on... lights work when they are switched on... feed is distributed when the Big Dutchman feed chain starts up...



Chain Feeder for Poultry Cage Systems

The Most Reliable and Efficient Feeder Available for Layer and Pullet Cage Systems.



Big Dutchman.



HERSHEY EQUIPMENT COMPANY, INC.

Designers of Quality Systems for Poultry, Swine and Grain Handling

SYCAMORE IND. PARK
255 PLANE TREE DRIVE
LANCASTER, PA 17603
(717) 393-5807

Route 30 West at the Centerville Exit.

LIVESTOCK TRUCKING WINTER SPRING FARM

H. Charles and Joan Hoffman
Brodheads ville, PA

717-992-6295

Order Buying. Weekly trips to Leesport, New Holland, Lancaster.

Also down cattle removal.

MULVANEY LIVESTOCK SERVICES



Tom Mulvaney, Jr.
Easton, PA



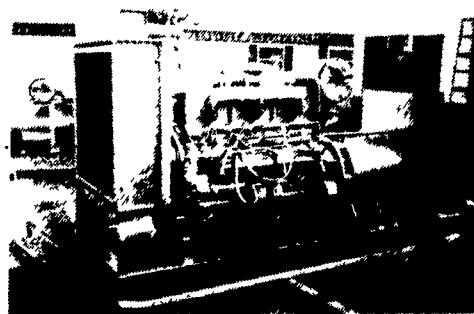
(215) 258-1670

TOP PRICES FOR DOWN & DISABLED CATTLE, Paid On Dressed Weight At Competitive Prices.
Also - Fat Cattle, Bulls and Steers.

PRESENTLY HANDLING THE FOLLOWING COUNTIES:
PA-Northampton, Lehigh, Bucks, Monroe, Part Of Berks, Carbon and Schuylkill.
NJ-Warren, Hunterdon, Sussex
Call (215) 258-1670



MARTIN MACHINERY



GENERATORS

Sales ★ Service ★ Rentals
★ Complete Generator Systems
★ PTO ★ Portables ★ 2-1600 KW
"We Service It If You Have It And Sell It If You Need It"

34 W. Mohler Church Rd.
Ephrata, PA 17522

Tel: 717-738-0300
Fax: 717-738-4329