

Cumberland Co. DHIA

dhia Monthly Report

Pennsylvania Dairy Herd Improvement Association

November, 1990

Cumberland County Dairy Herd Improvement records show that 7,243 cows in 116 herds were on production testing in November according to Duane G. Duncan, county agent. Of the 103 official programs, 46 herds had an average protein production of 550 pounds. During the month 137 cows completed their 305 lactation with 600 lbs. of protein.

Rolling Herd Averages

Owner	Brd.	No. Cows	Days In Milk	Milk Lbs.	Fat Lbs.	Protein Lbs.
Bent Creek Farm	8	13.6	89.1	23,233	833	746
Eric & Dawn Wright	B3	38.6	90.2	23,113	801	722
Curtis & Ann Day	3	51.7	90.7	20,530	760	681
Glenn W Myers	B3	68.7	87.4	20,965	754	663
Donald A McCullough	G3	97.2	85.6	19,756	749	663
J Paul Strock	3	124.8	87.4	20,047	705	649
Fred B McGillvray	3	60.5	88.9	19,851	699	640
David R Walton	3	35.3	85.6	19,603	731	640
Highland Vue Farms	3	64.5	87.6	20,033	733	635
M Thomas Sheaffer	3	62.9	84.0	19,200	713	623
Al Hart Holsteins	3	40.4	84.3	19,470	687	620
Harry E Thompson	3	53.9	85.2	18,720	704	620
Stambaugh Farms	G3	142.8	86.1	18,530	613	616
Lamar & Carol Sensenig	B3	47.8	88.9	19,380	704	609
Glenn Newswanger	G3	83.8	88.4	19,360	739	607

Nevin Shughart	B3	30.0	83.0	19,130	658	605
Vallilea Farms	B3	160.0	87.8	18,860	687	605
Robert E Keef-er	B3	151.7	88.1	18,723	694	603
Roy E Snoke	3	42.1	88.7	19,175	702	598
David E Gettle	B3	47.4	86.5	18,647	705	598
Robert H Jamison	3	22.1	87.7	19,622	687	592
Fred A Hoover	B3	44.0	85.9	18,712	652	592
Dave & Doug Lehman	3	73.3	89.9	18,594	681	592
Robee Acres	3	66.3	90.2	17,876	674	592
Leroy Showaker & Son	3	47.6	89.4	18,236	707	591
Woody Kelso	B3	51.2	90.3	18,557	638	588
LO VI Swiss	5	10.8	86.5	16,393	636	579
Leonard M High	B3	31.5	85.7	17,517	641	577
Leroy Chestnut	B3	49.7	88.4	17,889	675	571
Hills Hope Holsteins	3	74.5	86.7	17,469	652	571
Lonnie A Wickard	B3	33.4	89.5	18,019	658	570
Mark-Nan Leinaweaver	B3	33.3	87.6	17,880	639	570
Kevin W Fuls	B3	54.2	84.7	17,453	602	569
Harry & Paul Hoch	3	195.8	89.3	17,321	642	567
Mains Acres	B3	134.7	89.8	17,390	651	565
Samuel D Shenk	G3	59.0	86.0	17,400	651	564
Mark A Naugle	3	60.4	85.3	17,744	671	563
Betty A Zeigler & Sons	3	54.5	92.4	17,510	654	563
Paul O Dyarman	3	57.0	88.1	17,210	677	562
Donald M Leatherman	B3	45.3	88.3	18,383	626	561

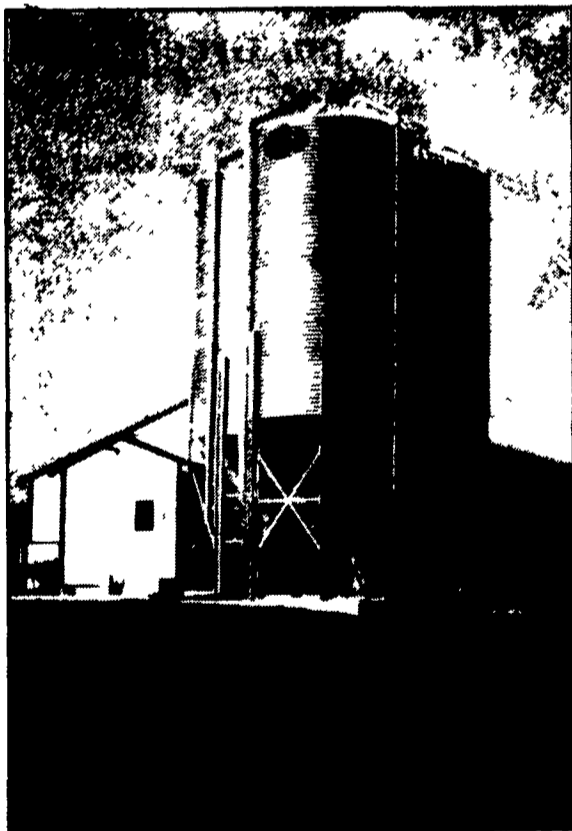
Lancaster Farming, Saturday, January 19, 1991-B23

Owner	Brd.	No. Cows	Days In Milk	Milk Lbs.	Fat Lbs.	Protein Lbs.
Jet-Rae Farm	3	62.8	84.2	17,246	649	560
Lactation Report						
John F Stamy III		3	6	27,851		875
Woody Kelso	B3	3		25,667		868
Glenn Newswanger	B3	7		26,962		862
Eric & Dawn Wright		3	7	27,457		846
Bent Creek Farm		3	5	24,995		835
Fred B McGillvray		3	5	23,950		802
Edwin Z Horst	B3	4		23,860		801
J Paul Strock		3	3	24,021		800
Jody		3	5	24,764		791
Clara		3	3	21,751		790
Donald A McCullough	B3	7		23,514		788
Curtis & Ann Day		3	3	24,271		783
David E Gettle	B3	4		23,837		781
Eric & Dawn Wright	B3	4		26,989		777
Glenn Newswanger	B3	3		25,346		772
William McCulloch	B3	7		21,971		770
Samuel D Shenk	B3	7		23,194		764
M Thomas Sheaffer		3	5	25,952		762
Sue		3	4	25,009		762
Harry & Paul Hoch		3	4	25,009		762
Lora		3	4	25,009		762
Glenn Newswanger	B3	2		24,326		760
Justa-Beauty Holsteins		3	7	24,993		758
Dizzy		3	4	22,625		745
Edwin Z Horst		3	6	22,256		745
John F Stamy III		3	6	22,256		745
Leo Dairy	B3	3		24,750		744
Edwin Z Horst	B3	4		22,151		744

MILK AMERICA'S HEALTH KICK



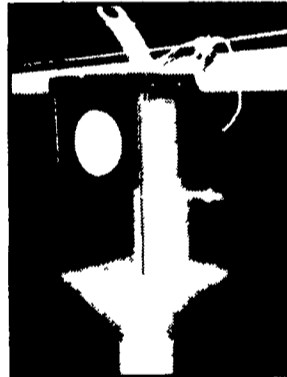
BINS & FLEX-FLO AUGER SYSTEMS



GSI GALVANIZED BULK BINS



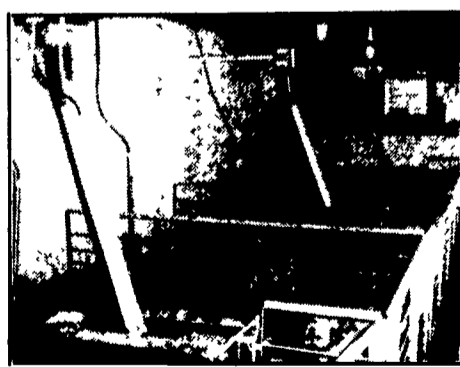
FINISHING BUILDING INSTALLATION



CLEAR PLASTIC ADJUSTABLE SOW DROP



FARROWING ROOM INSTALLATION



NURSERY INSTALLATION

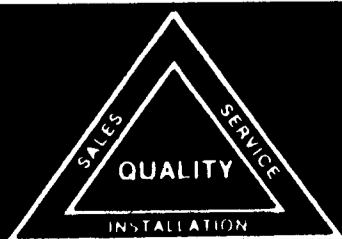


GESTATION INSTALLATION



POULTRY INSTALLATION

TRI-COUNTY Can Custom Design, Install And Service All Of Your Bulk Bin And Feed Delivery Needs. Custom Made Boots And Drops Are Also Available.



TRI-COUNTY
CONFINEMENT SYSTEMS, INC.

608 E. Evergreen Rd., Lebanon, PA 17042

Ph: 717-274-3488

Hours: Mon.-Fri.
7:00 to 4:30;
Sat. 8:00 to 12:00