

(Continued from Page A1)

ahead to address them. I am pleased that the beef industry has a long range plan in place that not only forecasts future challenges, but also sets a course for the industry to successfully compete in the future."

In addition to hearing Reese's comments, the meeting attendees were each presented with the Pennsylvania Beef Council's 1989-90 Annual Report. The report, which will be mailed to more than 25,000 producers within the state in the coming weeks,

highlights the programs and activities conducted on behalf of producers by their state beef council.

In his closing comments, Pennsylvania Beef Council Executive Director David Ivan thanked the attendees for their continued support of beef council activities. "While the Pennsylvania Beef Council has achieved many successes, the credit must be given to the individual producers, and their various organizations, for their continued support and efforts on the beef industry's behalf."

Lancaster Schedules Dairy Heifer Management School

LANCASTER (Lancaster Co.) — The heifers you raise today are the cows you will be milking in the future, and how well those cows will do will be affected by how well you care for your heifers.

Are your calves and heifers doing as well as they should? Are they calving at the proper age and weight, and do they milk as well as they should as first and second calf heifers? Do you know the

changes in heifers' needs at various stages in their development? Do you know what your heifer program is costing you?

If you would like to learn more about raising calves and heifers, attend a three-day Dairy Heifer Nutrition and Management School to be conducted in Lancaster and Chester counties by Penn State Cooperative Extension.

The school will be held 9:30

a.m. to 3 p.m. on Tuesday, January 22 and 29 at the Farm and Home Center in Lancaster. On Wednesday, January 23 and 30, it will be held at the Cochranville Fire Hall.

A \$30 registration fee will be charged for meals and materials. For reservations call (717) 394-6851 for the Lancaster County School and (215) 696-3500 for the Chester County School.



GOLDEN LEAF TOBACCO CO. INC.



NOWHERE IN LANCASTER CO. ARE TOBACCO GROWERS RECEIVING MORE TAKE HOME PAY FOR THEIR TOBACCO.

If you have not sold tobacco to Golden Leaf Tobacco Co. before, we invite you to check our company with your next load. As you know, the market has moved higher and prices may be changing daily. Please call us for daily price changes.

We hope our company has helped get the market prices where they are today and we will continue to work for our 609 customers in the future.

We will receive tobacco at our buying station from 8 a.m. to 4 p.m. Monday thru Friday. We are located in Martin's Sales Barn, 2 miles east of Intercourse at the intersection of Rt. 340 & New Holland Rd.

If you have any questions, please contact Golden Leaf Tobacco Company, or one of our buyers for daily prices.

Gene Bare
Bird In Hand, PA
717-656-9306

Aaron Miller
Bird In Hand, PA

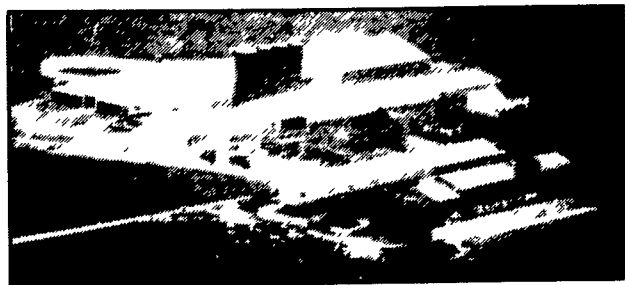
Mac Bailey
President
717-768-3074/
804-736-9604

Clark Stauffer
Ephrata, PA
717-733-8921



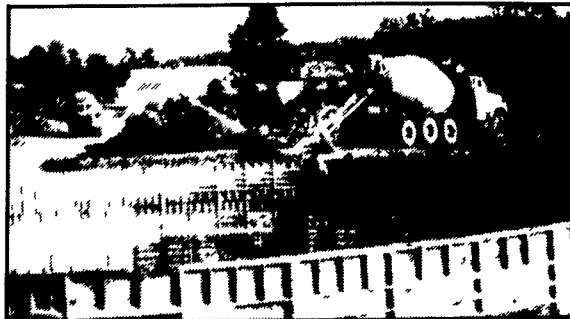
POURED SOLID CONCRETE STORAGE SYSTEMS

17 Years Experience In Pouring Concrete Manure Pits!



Far Left: 1-Million Gallon Circular Manure Storage Tank

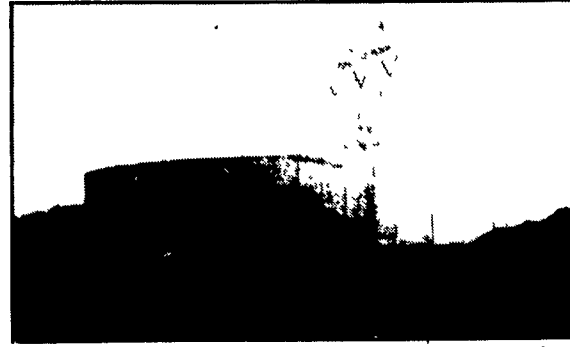
Far Right: 2 Silage Pits In-Barn Manure Receiving Pit



Construction Of Partially In-Ground Liquid Manure Tank - 400,000 Gallons



300' Long Manure Pit For Hog Confinement



Above Ground Liquid Manure Tank 425,000 Gallons

CONCRETE PUMPING SERVICE AVAILABLE



Mixer And Boom Trucks



92' Boom Placing Concrete



Placing Concrete On Site

Take the questions out of your new construction. Call Balmer Bros. for quality engineered walls.

All sizes available round or rectangular

Invest in Quality - It will last a lifetime.

Balmer Bros.
CONCRETE WORK, INC.

243 Miller Road
Akron, PA 17501

(717) 733-0353
6:30 AM - 3:30 PM

(717) 859-2074
After 6:00 PM