

## Clinton County DHIA Presents Awards, Honors Top Producers

LOCK HAVEN (Clinton Co.)— Production award winners were honored at the 51st annual meeting of the Clinton County Dairy Herd Improvement Association (DHIA) held Dec. 4, at the Country Lounge Restaurant.

The top herd in the county -- ranked according to pounds of protein -- was the 70-cow registered Holstein herd owned by Paul Courter of Mill Hall. His herd

averaged 20,362 pounds of milk, 752 pounds of butterfat and 655 pounds of protein during the past testing year.

Awards were presented to all herds with an average of 600 pounds of butterfat or more. Winners were:

- Ronald Meyer, Loganton- 19,862 pounds milk, 774 pounds fat, 643 pounds protein.

- Paul Courter, Mill Hall- 20,362 pounds milk, 752 pounds

fat, 655 pounds protein.

- Richard Schenck, Mill Hall- 18,700 pounds milk, 718 pounds fat, 606 pounds protein.

- Blair and Elaine Courter, Mill Hall- 19,014 pounds milk, 692 pounds fat, 613 pounds protein.

- Robert Billman, Beech Creek- 18,134 pounds milk, 678 pounds fat, 567 pounds protein.

- Keith & Ben Carson, Jersey Shore- 19,713 pounds milk, 675 pounds fat, 604 pounds protein.

- Dean & Brenda Daubert, McElhattan- 16,307 pounds milk, 639 pounds fat, 586 pounds protein.

- Anthony & Caroline Graine, Mill Hall- 18,456 pounds milk, 637 pounds fat, 586 pounds protein.

- Jacqueline Seyler, Mill Hall- 17,173 pounds milk, 628 pounds fat, 529 pounds protein.

- Harold Muthler, Loganton- 17,469 pounds milk, 624 pounds fat, 567 pounds protein.

- Roland Irvin, Beech Creek- 16,342 pounds milk, 616 pounds fat, 529 pounds protein.

- Jacob P. Miller, Mill Hall- 17,252 pounds milk, 605 pounds fat, 529 pounds protein.

An award for the cow producing the most butterfat during the year in 305 days was won by Paul Courter, Mill Hall. "Milly," a 7-year-old Holstein, produced 29,302 pounds of milk and 1,121 pounds of butterfat. The highest milk producing cow was Singer owned by Keith and Ben Carson of Jersey Shore. She produced 29,589 pounds of milk and 913 pounds of butterfat.

Other top cows were: LuAnn, owned by Dean and Brenda Daubert, 25,671 pounds milk, 1,038 pounds fat; Emily, owned by Dean and Brenda Daubert, 21,953 pounds milk, 1,036 pounds fat; #78, owned by Ronald Meyer, 25,355 pounds milk, 1,016 pounds fat; Lasso II, owned by Blair & Elaine Courter, 26,797 pounds milk, 1,010 pounds fat.

During the 1989-90 test year, 89 cows completed lifetime production records of a minimum of 100,000 pounds of milk or 4,000 pounds of butterfat.

The top five cows in lifetime production are: Moni, owned by Paul Courter, 215,480 pounds milk, 9,408 pounds fat; Kraft, owned by Ron & Bonnie Beck,

208,566 pounds milk, 7,206 pounds fat; Cookie, owned by Paul Courter, 193,714 pounds milk, 7,115 pounds fat; Lacy, owned by Richard Schenck, 173,496 pounds milk, 6,648 pounds fat; Singer, owned by Keith & Ben Carson, 177,389 pounds milk, 5,992 pounds fat.

The award for most improvement during the year was won by Harold Moore, Mill Hall, whose herd increased 1,173 pounds of milk and 52 pounds of butterfat.

Daniel F. Stoltzfus received the award for the herd with the lowest somatic cell count.

Awards were sponsored by Clintondale Mills, Dunkle & Grieb Inc., Sire Power Inc., Thomas Dunlap, Tony & Caroline Graine, Dotterer Equipment Inc., Select Sires Inc., and Webb's Super Gro Inc. Door Prizes were provided by Mill Hall Agway Inc. and Pa. DHIA.

DHIA supervisors for Clinton County are Robin Rupert, Mill Hall, and Tom Fox, Mackeyville.

Directors are Paul L. Courter, James Muthler, Vice President, Robert Billman, Secretary, Dale Johnson and Ronald Meyer.

## FFA Sponsors Honored At Convention

HARRISBURG (Dauphin Co.)— Sponsors of Pennsylvania FFA activities for the 1990 year were honored at a capitol brunch here on Wednesday, January 9.

The brunch was hosted by the Honorable Samuel E. Hayes, Jr., president of the Pennsylvania FFA Foundation.

Immediately following the brunch, held in the reception room of the new East Wing of the Capitol, sponsors were introduced and recognized by more than 1,000 Pennsylvania FFA'ers at their Mid-Winter Convention, held in the Forum Auditorium across from the capitol building.

More than 118 companies contributed to the Pennsylvania FFA this year. Levels of sponsorship include the following: contributor- up to \$100; bronze- \$100-249; silver- \$250-499; gold- \$500-749; star- \$750-999; and keystone- \$1,000 or more.

The following sponsors attended the ceremonies and were presented plaques in recognition of their contributions by state FFA Vice President, Larry Feeser:

- **Keystone Sponsors:** Hatfield Quality Meats, Monsanto Agriculture Company, Penn Jersey Power Equipment Dealers, Pennsylvania Beef Council, and Pennsylvania Florists Association.

- **Gold Sponsors:** Pennsylvania Farmers' Association, Ford New Holland, Mrs. Iva Kunkel, PSU Employee Training Program.

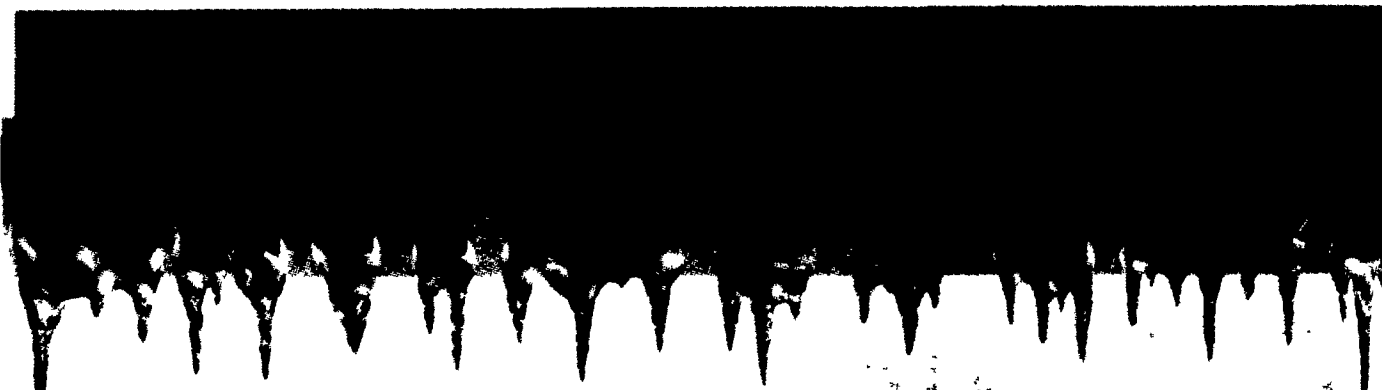
- **Silver Sponsors:** Evergreen Farms, Evergreen Tractors, Farm Credit of Baltimore, Keystone Farm Credit, Kuhn's Brothers Lumber, Mifflinburg Farm Supply, North East Farm Credit, Pennsylvania Cattleman's Association, Pennsylvania Livestock Association, and Penn West Farm Credit.

- **Bronze Sponsors:** Atlantic Dairy Cooperatives, C. B. Hooper & Son, Hamilton Bank, Lancaster Ford Tractor, Mid Penn Bank, Pennfield, Pennsylvania Nurseryman's Association, Pennsylvania Association of Meat Processors, and Penn United Technologies.

- **Contributors:** Balsbaugh Insurance Agency, Meridian Bank, Mifflinburg Young Farmers, and Jean Weller.

The activities covered by sponsorships included national and regional trips for state winners in more than 27 agricultural and leadership categories, state leader-

ship training events, the Student Legislative Leadership Conference, state officer expenses and scholarships, general scholarships, Keystone Degree winners expenses, record book winners expense, Mid-Winter Convention and June FFA Activities Week expenses, sponsorship of the "FFA Today" statewide newspaper, and various program activities carried out on a statewide level by the Pennsylvania FFA.



**Fact:** 121 alfalfa varieties were reviewed by the National Alfalfa Variety Review Board (NAVRB) from 1986 through 1989.

**Fact:** Only three of these varieties were classified as winterhardy by the NAVRB.

**Fact:** All three of these varieties are from Pioneer.

In 1986, the National Alfalfa Variety Review Board (NAVRB) began requiring winter survival data before any alfalfa variety could be classified as winterhardy. Since 1986, successful winter survival data has been accepted for only three varieties— 5472, 5373 and 5262—all from Pioneer. Prior to 1986, 5432 and 526 from Pioneer had also successfully met the standards to be classified as winterhardy.

Until 1986, the standard measure for winterhardiness had been based on the fall dormancy rating of an alfalfa variety.

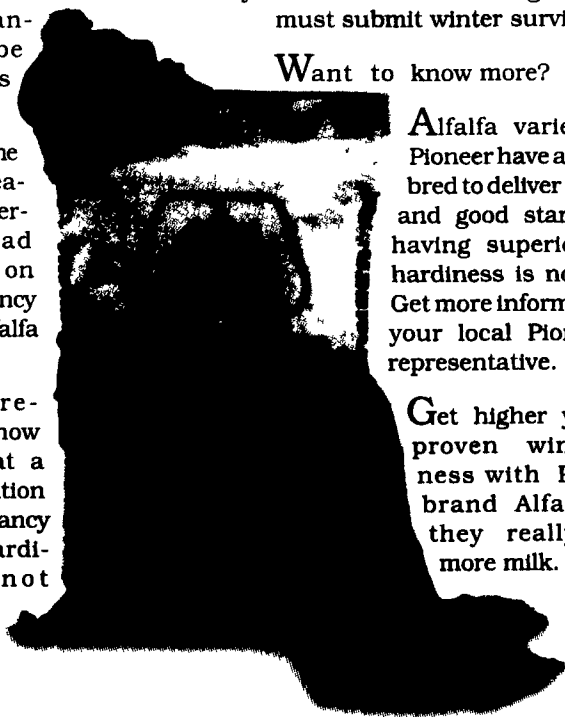
However, research data now indicates that a direct correlation between dormancy and winterhardiness does not always exist.

The other 118 varieties reviewed by the National Alfalfa Variety Review Board from 1986 through 1989 carry only a dormancy classification—such as dormant, moderately dormant or non-dormant—but do not carry any type of winterhardy classification. Before gaining any type of winterhardy claim, the company or institution submitting the variety must submit winter survival data.

Want to know more?

Alfalfa varieties from Pioneer have always been bred to deliver high yields and good stand life. So having superior winterhardiness is no surprise. Get more information from your local Pioneer sales representative.

Get higher yields and proven winterhardiness with PIONEER® brand Alfalfas . . . they really do grow more milk.



**MILK.  
IT DOES A  
BODY GOOD.™**



MIDDLE ATLANTIC MILK MARKETING ASSOCIATION INC



PIONEER HI-BRED INTERNATIONAL, INC

©Registered trademark of Pioneer Hi-Bred International, Inc., Des Moines, IA All sales are subject to the terms of labeling and sale documents. ©1990 Pioneer Hi-Bred International, Inc