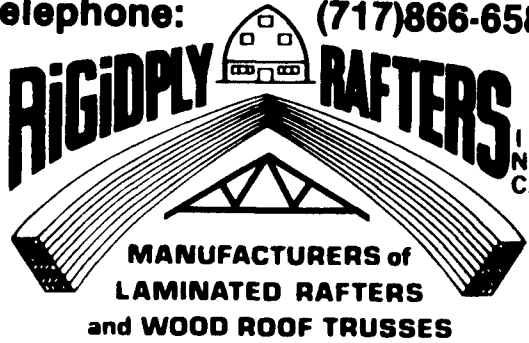
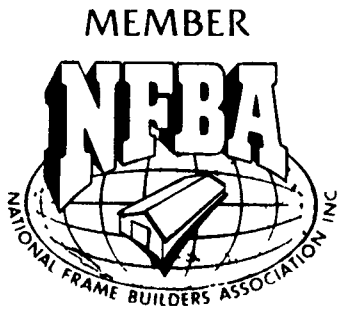


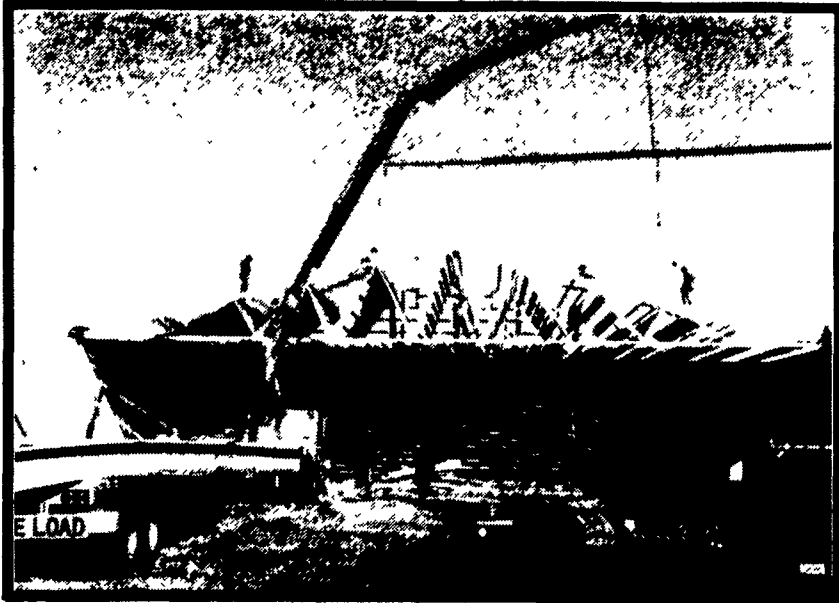
Telephone: (717)866-6581



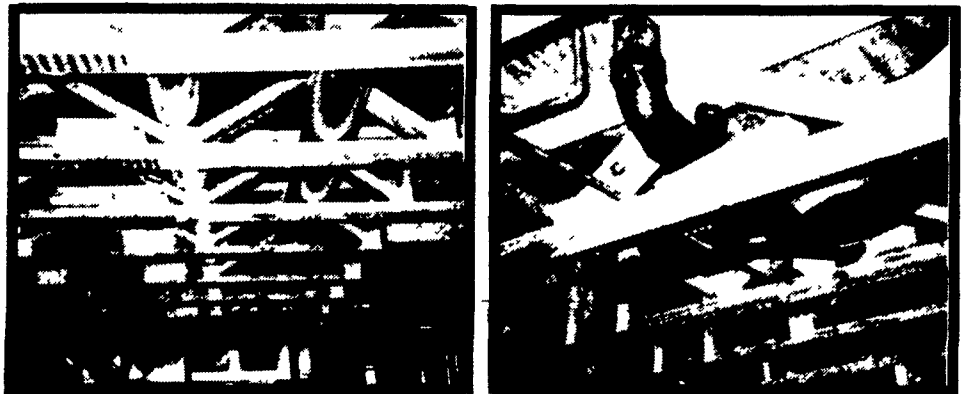
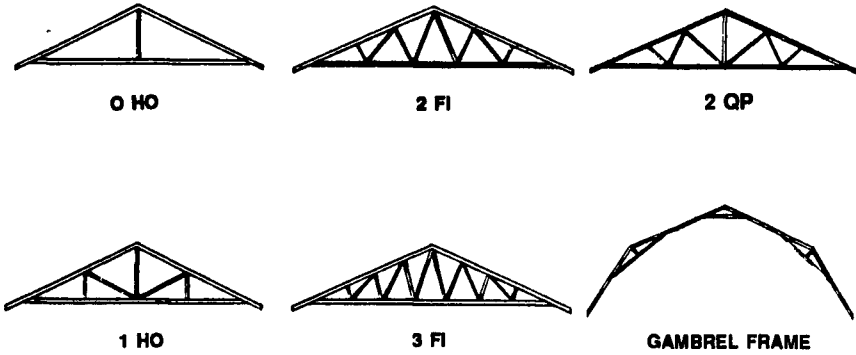
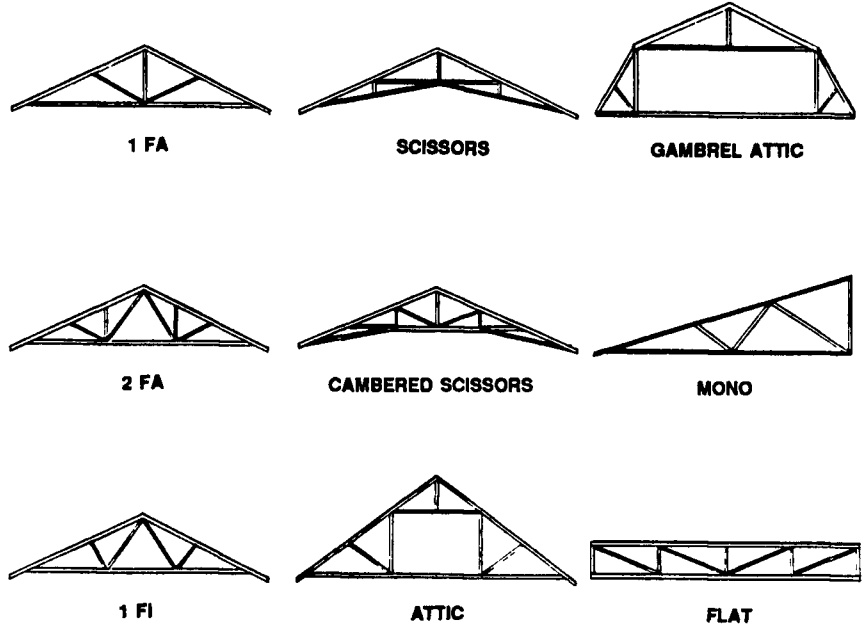
701 E. Linden St., RICHLAND, PA 17087

RIGIDPLY RAFTERS INC. TRUSS CONFIGURATIONS

Crane Service Available



Commercial building featuring 100' clear span trusses, manufactured and delivered in one piece.



WHAT ARE SOME OF THE ADVANTAGES OF FLAT FLOOR TRUSSES? CALL OUR SALES STAFF TODAY!

# FABRAL

The right metal roofing and siding for your project.

Nobody tops Fabral for metal roofing or siding. A wide variety of quality-engineered panels and a seemingly endless color selection makes Fabral the right choice, the easy choice. Custom cut lengths help avoid endlaps while saving time, material and money. Baked on Fabral finishes keep their original beauty for years. All accessories stocked and ready for delivery.

- |                         |                   |
|-------------------------|-------------------|
| <b>COLORS IN STOCK:</b> | <b>NON STOCK:</b> |
| 102 WHITE               | BLACK             |
| 103 RED                 | 117 IVORY         |
| 104 GREEN               | 118 AVOCADO       |
| 128 DARK BROWN          | 116 BLUE          |
| 210 TAN                 | 115 CHARCOAL      |
| 125 GOLD                | 107 DARK BLUE     |
| 114 LIGHT GRAY          |                   |
| PLAIN                   |                   |

Fabral's Quality Control Department performs seven different tests to each steel coil to guarantee that the painted product meets our high standards before manufacturing. Fabral's confidence in the longevity of the painted finish is demonstrated by an extensive warranty program. Complete details on the warranty are available.

**Durable  
attractive  
affordable.**



36'x48' Shed, featuring Gambrel Attic Trusses and Fabral Grandrib 3 Painted Steel

<p><b>GRANDRIB 3 GALVANIZED STEEL</b> Grandrib 3 has a full 36" coverage with 1/2" deep ribs every 9". The rib's depth and placement give it exceptional rain carrying capacity. Anti-siphon side lap makes it virtually leak-proof.</p>	<p><b>STRONGRIB ALUMINUM AND PAINTED ALUMINUM</b> Strongrib unique profile design makes this versatile panel ideal for exterior roofing and siding as well as an interior liner for ceiling and sidewalls. Twin 1/4" deep ribs every 9" and high strength alloy aluminum give it a uniform load-carry capacity equal to many steel panels.</p>	<p><b>1 1/4" SSR</b> The 1 1/4" SSR is a true standing seam roof system, specifically designed for the wood-frame and light-gauge steel frame commercial and residential markets. Offering unmatched economy, appearance and weather-tightness, the 1 1/4" SSR provides a distinct advantage over other roofing products.</p>
--	--	---

Fabral's steel colors provide years of maintenance-free service to any structure. Our strict quality control standards and painting procedures assure you of receiving a superior finish every time. Each steel coil is prepared for painting by an alkali cleaning, hot water rinsing, application of pre-treatment, cold water rinsing, acid sealing rinsing and thorough drying. The epoxy coating, formulated to provide corrosion resistance and to interact with the topcoat is applied and oven cured. The exterior finish coat is applied and oven cured to provide a durable, tough finish.

home  
agricultural  
commercial,



Orders are cut to length, packaged, and delivered to your job site.