

Virginia Weekly

Jan. 10, 1991

MARKETS IN REVIEW; JAN. 3-9, 1991. FEEDER STEERS AND HEIFERS IN VIRGINIA WERE MOSTLY \$3.00-10.00 HIGHER AS MIDWEST PRICES WERE \$8.25-9.00 HIGHER.

THERE WERE NO SLAUGHTER CATTLE SALES REPORTED IN VIRGINIA THIS WEEK HOWEVER, MIDWEST PRICES WERE 50 CENT TO \$2.00 LOWER.

COWS AND BULLS IN VIRGINIA WERE MIXED, \$1.00 HIGHER TO \$1.75 LOWER AS MIDWEST PRICES WERE \$1.00 LOWER. BEEF PRODUCTION WAS 19% ABOVE A WEEK AGO BUT 6% BELOW A YEAR AGO. AVERAGE DRESSED WEIGHTS WERE 7 POUNDS HEAVIER THAN A YEAR AGO.

LAMB PRICES IN VIRGINIA WERE STEADY TO \$1.75 HIGHER AS MIDWEST PRICES WERE \$3.00-4.00 LOWER. LAMB PRODUCTION WAS 3% BELOW A WEEK AGO AND 8% BELOW A YEAR AGO. AVERAGE DRESSED WEIGHTS WERE 3 POUNDS LIGHTER THAN A YEAR AGO.

SLAUGHTER HOG PRICES IN VIRGINIA WERE \$2.00 HIGHER AS MIDWEST PRICES WERE \$2.50 HIGHER. HOG PRODUCTION WAS 8% ABOVE A WEEK AGO AND 6% ABOVE A YEAR AGO. FRESH PORK PRICES WERE \$4.00-16.00 HIGHER. AVERAGE

DRESSED WEIGHTS WERE 4 POUNDS HEAVIER THAN A YEAR AGO.

THE VIRGINIA DIRECT HOG MARKET JAN. 3-9, 1991. RECEIPTS FOR THE DIRECT HOG MARKET IN VIRGINIA FOR THE PERIOD TOTALLED 5,613 HEAD COMPARED TO LAST WEEK --- HEAD. (NO REPORT LAST WEEK) THE SOUTHEAST VIRGINIA HOG MARKET CLOSED \$2.00 HIGHER COMPARED TO LAST WEDNESDAY'S TRADING WITH BARROWS AND GILTS: COUNTRY POINTS LOCAL PLANT DELIVERED (30 MILE RADIUS) US 1-3 220-240 LBS 47.00-47.50 49.00-49.50 US 3-4 220-240 LBS 47.00-47.50 US 1-3 200-220 LBS 43.00-45.00 US 2-4 250-270 LBS 43.00-45.00 US 3-4 270-300 LBS 39.50-41.00 SOWS \$36.00-42.00 AND BOARS \$33.00. VALLEY AND NORTHERN VIRGINIA HOGS; 1162 HEAD FOR THE PERIOD US 1-3 210-250 LBS \$45.00-48.00

SLAUGHTER STEERS AND HEIFERS 0%; SLAUGHTER COWS 21% SLAUGHTER BULLS 2%, SLAUGHTER CALVES AND VEALERS 0%, FEEDER CATTLE UNDER 600 LBS 59%, OVER 600 LBS 18%

PRICE RANGES FOR VIRGINIA WEEKLY AUCTIONS

SLAUGHTER CATTLE STEERS; NO PRICES REPORTED THIS WEEK. HEIFERS; NO PRICES REPORTED THIS WEEK. SLAUGHTER COWS UTILITY & COMMERCIAL COWS 43.00-56.50 SLAUGHTER BULLS 43.00-56.50 1-2 900-1300 LBS 52.00-65.50 1-2 1300-1600 LBS 54.00-67.75 1-2 1600 LBS & OVER 55.25-68.75 SLAUGHTER CALVES AND VEALERS VEALERS - HIGH CHOICE & PRIME 100-250 LBS --- GOOD AND CHOICE 100-250 LBS --- CALVES - GOOD AND CHOICE 250-500 LBS 70.00-74.50 SLAUGHTER LAMBS HIGH CHOICE & PRIME 95-125 LBS WOOL 40 50-49.75 SLAUGHTER HOGS US 1-3 200-250 LBS 45.00-45.75 SOWS US 1-3 300-500 LBS 34.75-41.00 500 LBS & OVER 39.50-44.25

FEEDER CATTLE STEERS; MEDIUM 1 HEIFERS: MEDIUM 1 200-300 LBS 100.00-117.00 300-400 LBS 87.50-101.00 300-400 95.00-111.50 400-500 80.00-96.00 400-500 90.50-105.00 500-600 78.00-94.00 500-600 84.50-100.00 600-700 74.00-86.00 600-700 77.00-93.50 700-800 72.00-77.50 700-800 75.00-86.00 800-900 69.00-71.75 800-900 70.25-84.50.

FARMS 33 HEAD NEWBORN TO 4 WK OLD \$42.50-112.50 PER HEAD. OVER 100 LBS \$92.50-120.00 PER CWT.

Central & S.E. Virginia Livestock

Smithfield (Blackstone) - Southside VA

Jan. 9, 1991

ALL TRENDS COMPARED TO LAST WEDNESDAY

SLAUGHTER HOGS 125 HEAD - SLAUGHTER SOWS MOSTLY 50 CENT LOWER BOARS STEADY SOWS US 1-3, 300-500 LB. 38.00 - 40.10 US 1-3, 500 LBS. & OVER 41.00 BOARS 300-600 LB. 36.00 - 38.20

SLAUGHTER CATTLE 93 HEAD - SLAUGHTER COWS STEADY TO \$3.00 LOWER. SLAUGHTER BULLS STEADY.

SLAUGHTER COWS 80 HEAD COWS CUTTER & BONING UT 1-3 45.00 - 53.50 BREAKING UT & COMM 2-4 43.00 - 51.50

SLAUGHTER BULLS 13 HEAD BULLS YG 1-2, 900-1300 LB 55.50 - 64.00 YG 1-2, 1600 LBS & OVER 55.25 - 60.00

FEEDER CATTLE 568 HEAD - FEEDER STEERS, FEEDER HEIFERS AND FEEDER BULLS \$2.00-3.00 HIGHER STEERS MEDIUM 1 LARGE 1 SMALL 1 MED & LARGE 2 300-400 95.00-96.00 --- 400-500 96.50-97.50 91.00-97.00 81.00-86.00 90.50-96.00 84.50-94.50-72.50-85.00 93.00-600-700 77.00-89.50-76.50-84.50 700-800 75.00-84.00 --- 800-900 80.00-82.25 --- HOLSTEIN STEER MED & LARGE 2 700-900 63.00-64.00

HEIFERS MEDIUM 1 LARGE 1 SMALL 1 MED & LARGE 2 300-400 80.00-88.50 82.00-85.00 73.00-77.50 69.50-86.50 400-500 82.00-86.50 84.00 70.00-76.50 75.00-84.00 500-600 75.00-82.00-70.50-76.00 70.00-79.00 600-700 74.50-81.75 --- 70.00-79.00 700-800 72.75 --- BULLS MEDIUM 1 SMALL 1 MED & LARGE 2 200-300 - 84.00-87.50 - 300-400 100.00 78.50 - 400-500 97.00 77.50 86.00-90.00 500-600 85.00-87.00 - 600-700 73.00-84.50 --- 700-900 65.00-69.00 --- BABY CALVES RETURNED TO FARMS 41 HEAD NEWBORN TO 4 WK OLD \$25.00-115.00 PER HEAD OVER 100 LBS \$81.00-132.50 PER CWT

N. Virginia Livestock

Orange, VA

Jan. 9, 1991

ALL TRENDS COMPARED TO LAST WEDNESDAY

SLAUGHTER CATTLE 47 HEAD - NO TRENDS REPORTED.

SLAUGHTER COWS 43 HEAD COWS CUTTER & BONING UT 1-3 47.50-50.50 BREAKING UT & COMM 2-4 48.50-56.50

SLAUGHTER BULLS 4 HEAD BULLS YG 1-2, 1600 LBS & OVER 60.50-65.50

FEEDER CATTLE 107 HEAD - NO TRENDS REPORTED STEERS MEDIUM 1 300-400 95.00-97.00 400-500 82.00-86.75

HEIFERS MEDIUM 1 SMALL 1 MED & LARGE 2 300-400 81.00-85.00 74.00-79.00 83.00-84.00 400-500 79.00-83.50 - 500-600 78.00-82.00 - -

BULLS MEDIUM 1 SMALL 1 300-400 91.00-95.00 90.00-94.00 400-500 85.00-87.00 - COWS WITH CALVES AT SIDE 3 PAIR, M-1, 6-10 YR OLD 950-1100 LBS WITH CALVES 70-110 LBS \$540.00-700.00 PER PAIR BABY CALVES RETURNED TO

FOR SALE SHAVINGS & SAW DUST

- ★ Delivered To Your Location
- ★ Year Round Supply
- ★ Excellent for Dairy or Horses

Call For Price To Your Area
717-653-5935

J.D. Martin inc.

Mt. Joy, PA

THE YORK COUNTY FARMLAND TRUST IS SEEKING AN EXECUTIVE DIRECTOR

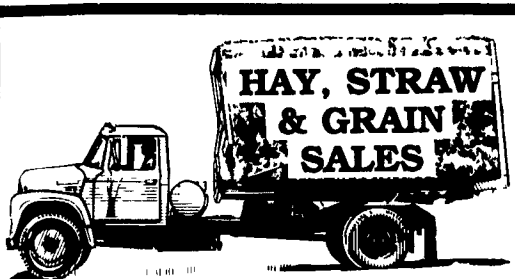
DUTIES INCLUDE:

PROGRAM DEVELOPMENT + ADMINISTRATION, PUBLIC RELATIONS, BUDGETS, AND WORKING WITH THE FARM COMMUNITY

CALL: RICHARD BONO

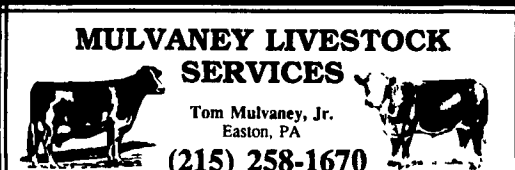
(717) 845-9101 Day

(717) 751-0195 Eve.



Every Wednesday
At 11:00 A.M.

GOOD'S AUCTION
111 Maple Ave.
Leola, PA 17540
717-656-8911
717-656-9554



Tom Mulvaney, Jr.
Easton, PA

(215) 258-1670

TOP PRICES FOR DOWN & DISABLED CATTLE, Paid On Dressed Weight At Competitive Prices.
Also - Fat Cattle, Bulls and Steers.

PRESENTLY HANDLING THE FOLLOWING COUNTIES:
PA-Northampton, Lehigh, Bucks, Monroe, Part Of Berks, Carbon and Schuylkill.
NJ-Warren, Hunterdon, Sussex
Call (215) 258-1670

CARCASS RESULTS OBTAINED BY OUR CUSTOMERS:

These hogs were all sired by our Hampshire boars with the exception of a few barrows sired by maternal line Large Whites. This producer stated that the whiteline barrows did not help the average. These hogs were sold at Mariah Packing @ Monmouth, IL.

Ham %	Loin %	Prem/CWT
18.65	14.85	4.56
18.91	15.09	5.17
17.85	15.06	4.11
18.00	15.03	4.17
18.85	15.25	5.34
19.50	15.52	6.02

The averages are 18.63% ham, 15.14% loin and a \$4.90 premium per hundredweight, or a \$11.27 premium for a 230 lb. hog. The consistent results show the uniformity of the pigs sired by our boars.

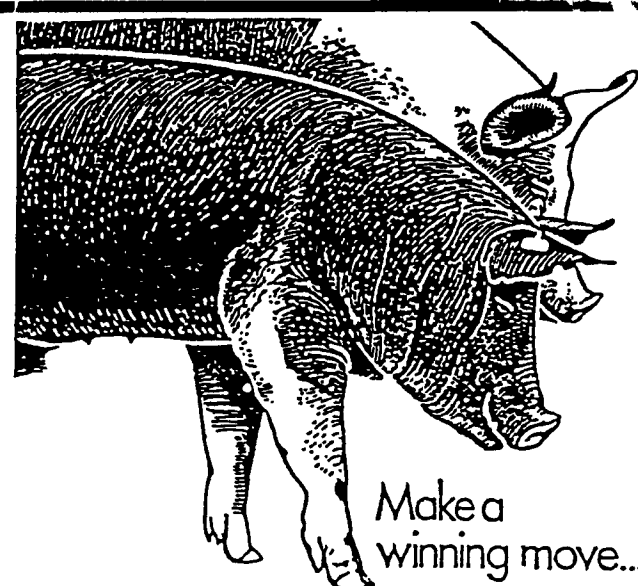
If you have any questions or need anything please call. Our Toll-free number is 1-800-752-7113.

Call 1-800-752-7113 for more info.
OUTLAW SEEDSTOCK SERVICES



Ben Outlaw

Route 2, Box 324A • Seven Springs, NC 28578



***** Contract with Purina Mills, Inc.**
Now accepting new and existing sow herds

We Supply

- Quality Purina Feeds
- Sound Genetic Program
- A Service Representative To Assist You
- Competitive Contract Payment

Call Us Today

1-800-873-5300

Purina Mills, Inc.
Serving The Needs Of Agriculture