

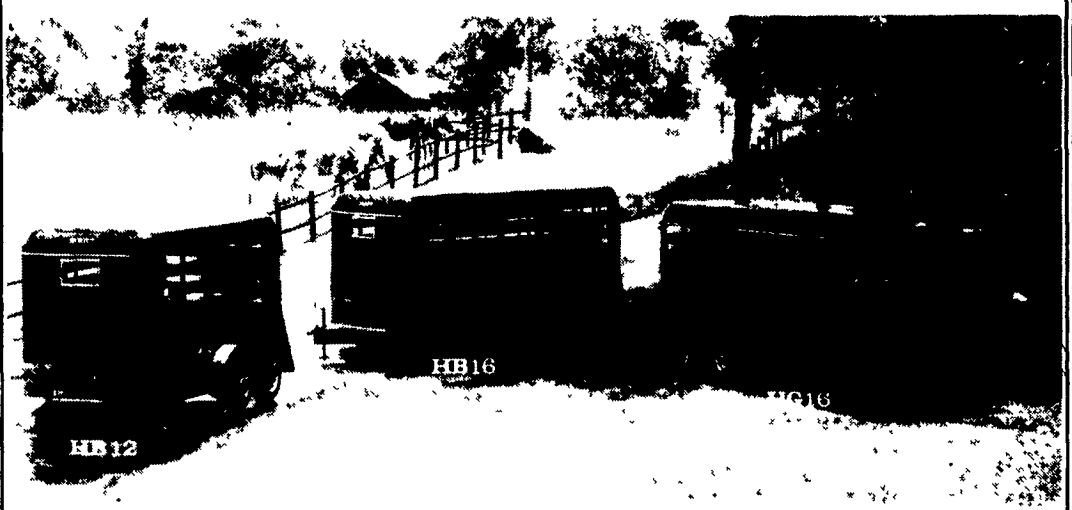
Looking for a quality rebuilt Chevy V8 car or truck motor with warranty. For prices and delivery Call Tony At 717-762-7940



1980 Chevy Service Truck
With Dual Wheels, Good Cond.
\$3,200
717-438-3354

CHEVY MOTORS
New & Rebuilt
350, 366, 427, 454
Will Install Roll Back Service (at cost)
717-762-6415

★★★★ **TRAILER ENTERPRISES** ★★★★★
IS BUILDING A REPUTATION

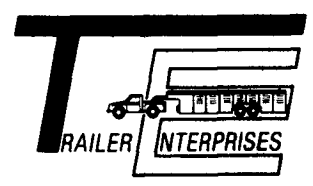


From Livestock Transport - to - Heavy Industrial Moving.. We serve **YOU!!** Call **NOW** and give us the opportunity to help, with **ALL** Your Trailer Needs! Financing and Leasing To Qualified Buyers. Trailer Enterprises is also your area distributor for Owens heavy-duty car dolly.

HORSE * STOCK * GOOSENECK * FLATBEDS * INDUSTRIAL * UTILITIES OF ALL KINDS *

"Revvin' to take care of ALL your trailer needs."

120 Pine Drive
Greencastle, PA 17225
Phone 717-597-5611



James D. Martin
Owner

FISHER'S TRAILER SALES

HORSE STOCK UTILITY CARGO
REDUCED 1990's

	Retail	NOW
Utility 16' Brn ramps 4 wheel brakes	\$1582	\$1250
Tilt 5x8 Bk 3500# w/rails	\$784	\$615
Cargo 4x8 1500# plywood interior	\$1195	\$1000
Cargo 5x8 2990# plywood interior	\$1795	\$1450
Stock 6x10 Moritz Grey 4 wheel brakes spare wheel	\$2575	\$2300
Stock 6x16 Moritz Grey 5200# axles spare wheel	\$3075	\$2750
Stock 6x12 Custom Fab Red 4 Wheel brakes undercoat	\$2963	\$2500
Stock 6x16 Goosneck Blue 5200# axles	\$3550	\$3350
Stock 7x16 Aluminum '89 plywood lined demo	\$8000	\$6800
Used stock \$1000 and up 12'-14'-18'-20'		
Used 2-Horse \$500 and up 4-Horse \$1200		

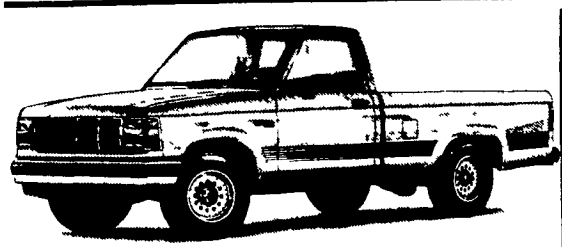
FISHER'S TRAILER SALES RD #2 McVeytown, Pa. 17051
(717) 242-0941 Strodes Mills Middle Rd.

Mark VII - Pickups - Broncos - Bronco II - Stake Body - Crew Cab -

For All Your Farming And Recreational Transportation Needs!

Over 150 New Trucks In Stock With More Arriving Daily!

BRONCOS DIESEL PICKUPS CHASSIS CAB CARGO VANS 4x4 RANGERS PICKUPS
SUPER CAB CREW CAB STAKE BODY BOX VANS XLT CUSTOM VANS

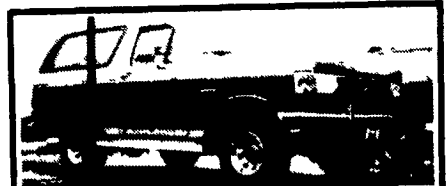
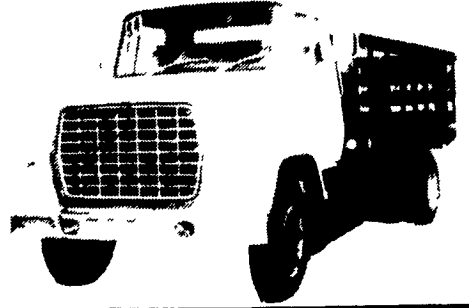


'91 FORD RANGER XLT
4x2, Two-Tone, Manual Trans.
\$8,499*
5 To Choose From!



'91 FORD EXPLORER XL 4x4
4.0L EFI V6, 5 Spd., Cast Alum. Wheels, Privacy Glass
AS LOW AS \$14,899*
20 To Choose From!

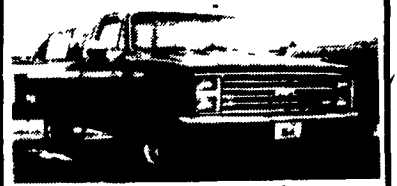
FORD STAKEBODY
All Types Of Farm Trucks Available!



'90 FORD BRONCO XLT
Two-tone, 351, V8, AT, PS, PB, AC, Tilt, Cruise, AM/FM Cass., PW, PDL, Running Bd., Only 2,000 Miles, WAS \$18,899
NOW \$16,899



'88 FORD F-250 XLT LARIAT
351, AT, PS, PB, AC, Tilt, Cruise, AM/FM St., Only 20,000 Miles, Ready To Go To Work! WAS \$12,899
NOW \$10,899



'86 CHEVY C-10 PICK-UP
8 Cyl., 3 Spd., PS, PB, Clem Local Trade, Only 40,000 Miles, WAS \$7,899
NOW \$5,899



'88 FORD RANGER SUPERCAB
XLT, V6, 5 Spd., PS, PB, Tilt, Cruise, AM/FM Cass., Only 28,000 Miles, One Owner, Like New, STX, WAS \$10,899
NOW \$9,899

Over 30 Used Trucks In Stock. Prices Starting At \$1,995

* Price Includes Applicable Rebates

9-9 Daily
9-5 Sat.
717-272-7671



Unless This Emblem Is On Your Car Or Truck You Probably Paid Too Much

SHEEHY LEBANON

SHEEHY FORD LINCOLN MERCURY INC.

20th & Cumberland St., Lebanon

Parts Dept. Open
Daily 8-5
Sat. 8-12
717-273-8168

Tempo - Cougar - Continental - Town Car - 4x4 - Box Van - Rangers -

Custom Vans
XL
Grand Marquis
Marquis

Lynx
Topaz
Diesel Pickups
Mustang
T Bird