

# Sinans Add More DHIA Trophies

**RANDY WELLS**

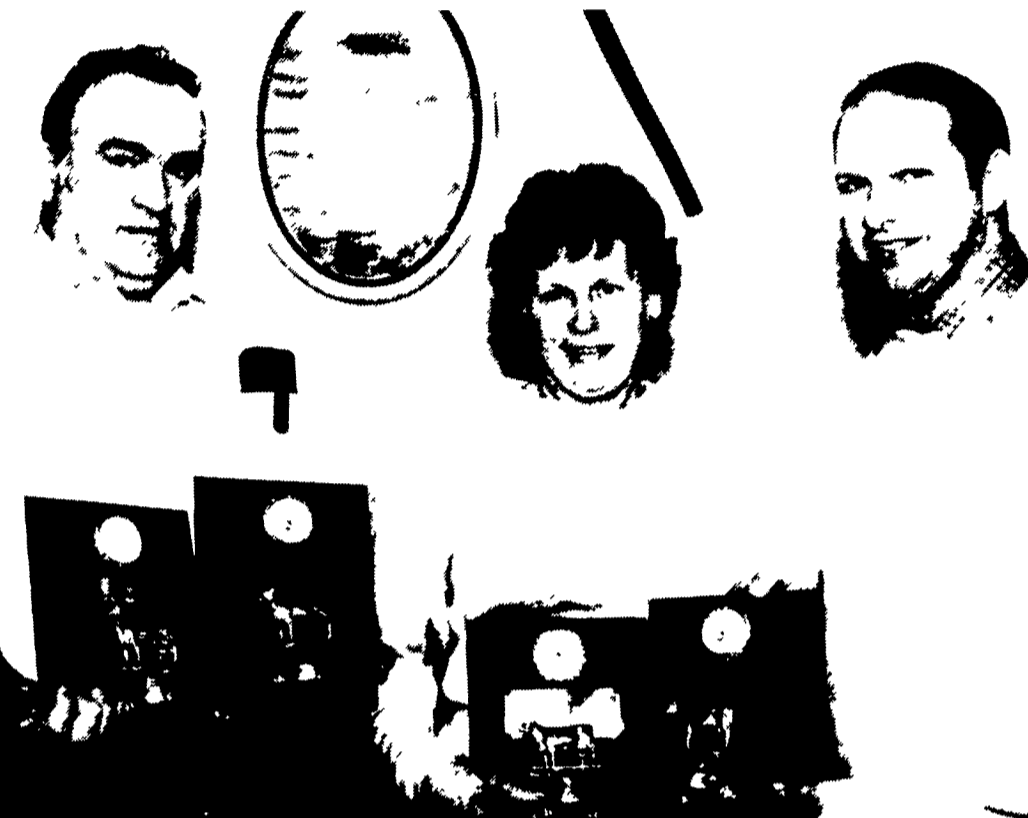
**Indiana Co. Correspondent**  
**INDIANA (Indiana Co.)**— An Indiana County dairyman set a state record for butterfat production this year even as feed costs per cwt. of milk in the county were increasing and milk production per cow was dropping, according to county Dairy Herd Improvement Association records.  
 At the county's DHIA annual luncheon meeting at Hoss's Steak & Sea House in Indiana, County Extension agent Gene Schurman announced Milos and Sandy Sinan's herd of 80 Holsteins produced an average of 1,009 pounds of fat during the past year, a record

for the state. The statistics were based on a rolling herd average for 365 days, and represented an increase of 104 pounds over last year -- good enough to also win the Sinan's top honors for most improved herd for fat production.  
 The Indiana County DHIA completed its 64th year with 52 whole-year herds. Eight owner-sampler herds also completed the testing year.  
 The Sinan's herd also won two other county DHIA awards: first for overall milk production, 26,458 pounds; and first for protein production, 810 pounds.  
 After the meeting, Milos Sinan said the butterfat production

record was not a specific goal he and his wife and three children had been shooting for.  
 "We're always working, trying to get better," he said, adding the awards are probably the result of both good nutrition and genetics in his cattle.  
 The Sinan's milk three times a day at their northern Indiana County farm.  
 Their goal for 1991? "We're working on improving protein," Milos replied.  
 Other county DHIA award winners were Don Eaton of Clarksburg RD1, whose herd won second place awards for both protein production, 724 lbs., and fat pro-

duction, 873 lbs.  
 Dale and Rodney Bloom of Seward took third place for fat production, with 755 lbs.  
 Tom Dishong of Commodore received three DHIA awards. He was recognized as having the most improved herd in Indiana County for milk production (an increase of 2,451 lbs.); most improved herd for protein (an increase of 96 lbs.); the lowest somatic cell count (125,000).  
 As far as his boost in milk production was concerned, Dishong said, "In my opinion, it was just switching protein and energy levels."  
 Feed companies usually push protein, he explained, but his cows are now on more of an energy-based diet. He has even left the cows get a little overweight, he said.  
 He attributes his low somatic cell count -- considerably below the county average of 340,000 -- to daily changes of sawdust bedding and a full 1 percent iodine dip with lanolin before and after milking. He said he also squirts each quarter eight times to flush the udder before milking, and uses newspaper to wipe and dry the teats after dipping.  
 During 1991 Dishong said he will be phasing out the last five Jerseys from his herd, and expects the remaining all-Holstein herd will further improve his overall average milk production.  
 Other top-producing herds in the county, by breed, were:  
 Jersey -- Wayne Braughler, Marion Center: 12,384 lbs. of milk; 603 lbs. of fat; 485 lbs. of protein.  
 Guernsey -- Alvin and Robert

Beatty, Indiana: 12,389 lbs. of milk; 580 lbs. of fat; 456 lbs. of protein.  
 Mixed herd -- Paul and Karen Sherry, Commodore: 19,211 lbs. of milk; 678 lbs. of fat; 597 lbs. of protein.  
 In reviewing county and state DHIA statistics, Schurman noted milk, fat and protein production per cow have all declined in the county from last year to this year, and all three categories are lower than 1990 state averages.  
 According to the DHIA records, Indiana County cows produced an average of 15,862 pounds of milk in 1990, compared to 15,928 in 1989. Fat production per cow in 1990 was 588 lbs. compared to 595 in 1989. And county cows produced 511 lbs. of protein in 1990, down from 512 lbs. per cow the year before.  
 Schurman suggested the lower production levels might have been caused by poorer quality feeds resulting from last year's wet growing season.  
 The records also show total feed costs per cow edged up from \$930 in 1989 to \$934 in 1990, well above the state average of \$910 per cow.  
 Feed costs per cwt. of milk in the county also increased marginally from \$5.84 in 1989 to \$5.89 in 1990, also higher than the 1990 state average of \$5.40.  
 Also at their annual meeting, the county DHIA members present voted unanimously to dissolve the county DHIA and become members of the consolidated Pennsylvania DHIA now being organized. The revised membership took effect Jan. 1, 1991.



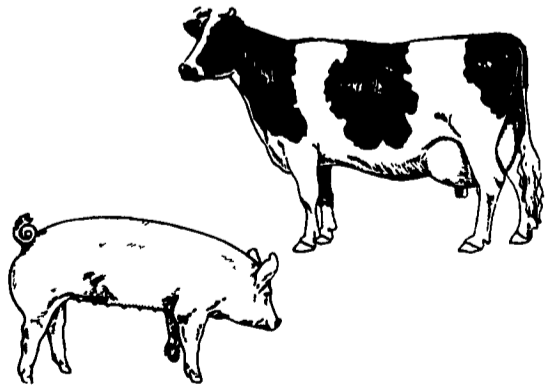
The 80 Holsteins owned by Milos and Sandy Sinan of Home garnered top honors for milk, butterfat and protein production at the recent Indiana County DHIA annual luncheon. The Sinan's also were recognized for having the most improved herd for fat production in the county. Presenting the awards were county DHIA president Tom Wallace of Marlon Center, right.

## Problem Water?

Odor? Bad Taste? Stains? Iron? Manganese?  
 Mineral Buildup? Color? Bacteria? Virus?  
 Harmful Micro-organisms? Hydrogen Sulfide?  
 THM Precursors? Other Contaminants?

Do You Have Any Problems With:

- \* Scours
- \* Digestion
- \* Mastitis
- \* Breeding
- \* Small Litter Size
- \* Too Much Medication
- \* Milk Production
- \* Poor Feed Efficiency
- \* Algae in Drinking Cups
- \* Bad Conception Rate



## Could Water Be Your Problem? Complete Farm Water Treating System

A Farm Water System that is designed to clean the water on your farm with one of nature's most powerful purifying agents -- Condensed Oxygen (Ozone).



335 Quarry Rd., Leola, Pa. 17540  
**717-656-8380**

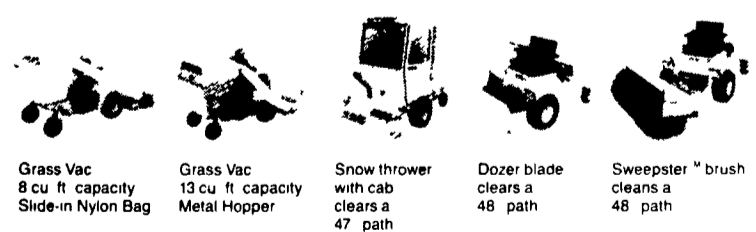
## The Woods mow'n machine™

It runs circles around trees, shrubs, fence rails and the competition.

Maximum maneuverability is the key to the mow'n machine's growing popularity. Because engine power is supplied to each wheel independently a true 360° zero radius turn can be made smoothly without any damage to your lawn.  
 And the mow'n machine makes all the right moves even in those hard-to-reach places. That keeps you from having to double-back for time-consuming follow-up trimming.  
 Available with either a gasoline or diesel powered engine, the mow'n machine also features an out-front mower deck, finger tip controls for speed, direction and braking and a comfortable vinyl-padded driver's seat.



Adding versatility to the mow'n machine is easy with these easy-on, easy-off attachments:



Grass Vac 8 cu ft capacity Slide-in Nylon Bag  
 Grass Vac 13 cu ft capacity Metal Hopper  
 Snow thrower with cab clears a 47 path  
 Dozer blade clears a 48 path  
 Sweepster™ brush cleans a 48 path

...come in for a demonstration

- |  |  |  |
|--|--|--|
| <p><b>WM. HOBENSACK'S SONS</b><br/>                 Ivyland, PA<br/>                 215-675-1610</p>              | <p><b>THOMAS POWER EQUIPMENT</b><br/>                 Avondale, PA<br/>                 215-268-2181</p>       | <p><b>LAMBS FARM MACHINERY</b><br/>                 Thorndale, PA<br/>                 215-269-2676</p>          |
| <p><b>R.S. HOLLINGER &amp; SON, INC.</b><br/>                 Mountville, PA<br/>                 717-285-4536</p> | <p><b>PIPERSVILLE GARDEN CENTER</b><br/>                 Pipersville, PA<br/>                 215-766-0414</p> | <p><b>N.H. FLICKER &amp; SONS, INC.</b><br/>                 Maxatawny, PA<br/>                 215-683-7252</p> |
| <p><b>ECKROTH BRGS. FARM EQUIPMENT</b><br/>                 New Ringgold, PA<br/>                 717-943-2131</p> | <p><b>RW KELLER SALES</b><br/>                 Perkasie, PA<br/>                 215-257-0101</p>              | <p><b>NESLEY EQUIPMENT CO.</b><br/>                 Pottstown, PA<br/>                 215-469-6391</p>          |