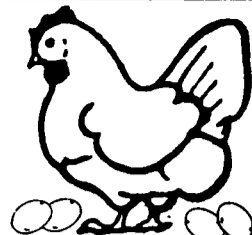
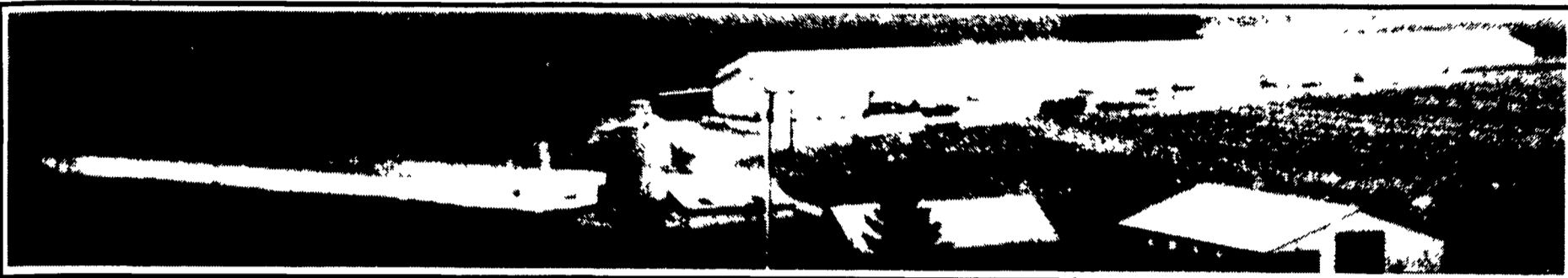


Thanks and Congratulations to

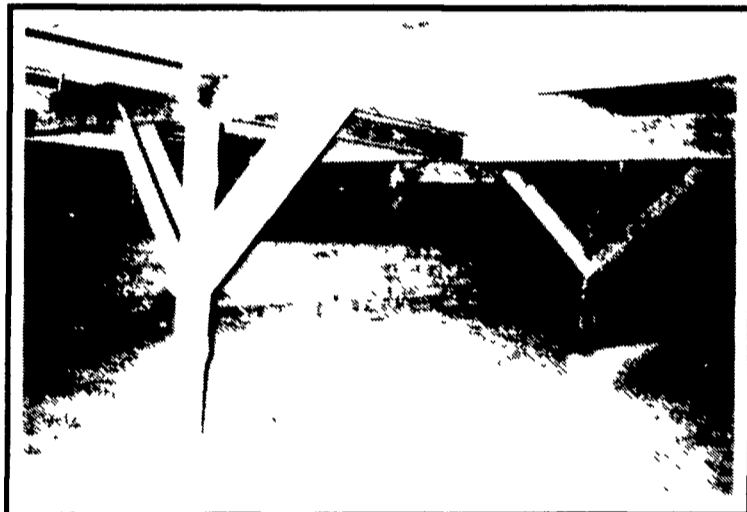


MR. & MRS. DAVID HIGH & FAMILY PITMAN, PA

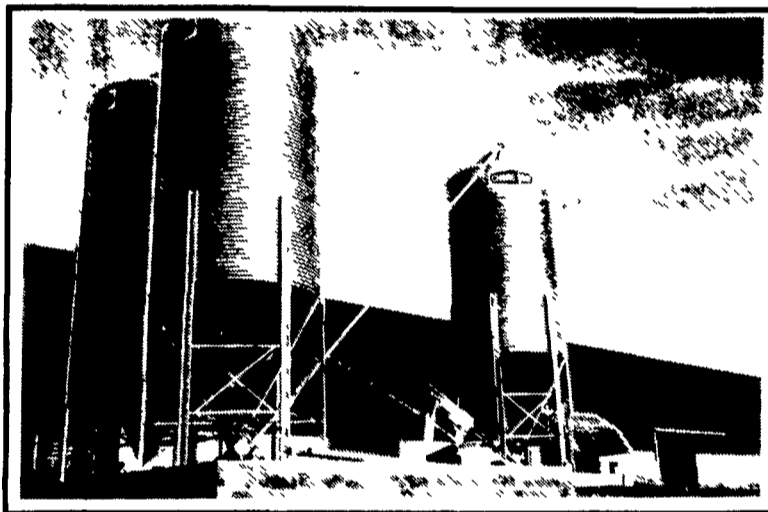
On Their New **CHORE-TIME**® 108,864 Bird Layer Facility Featuring 6 Rows 4 High **DURACAGE**® 504' Long With **CHORE-TIME**® **ULTRAFLO**® Feeding System



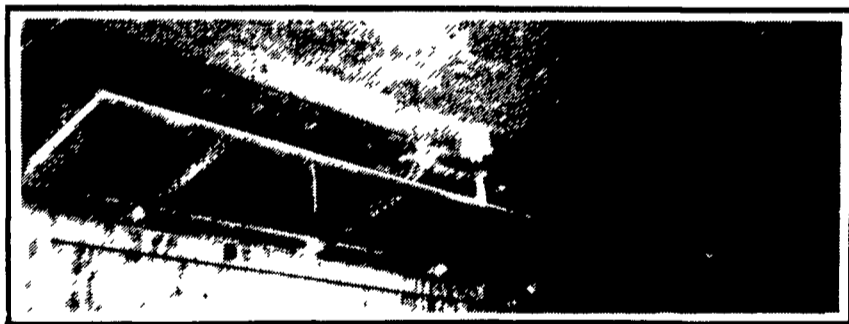
The High Farm With **CHORE-TIME**® 108,864 Bird Layer House, Egg And Cooler Room With 85 Case **MOBA** Farm Packer:



Building By Buffalo Valley Construction Features Double-Braced 3-2x12 Douglas fir Girders, Treated Post On Concrete Curbs, Extra Height In Pit For Easy Manure Removal, And Steel Beam At Pit Pours.



2-**CHORE-TIME**® Feed Bins With Transfer Augers To A J-STAR Weigh Bin Allow Manager To Monitor Feed Consumption Anytime Throughout The Day.



Modern Ag Baffle Board Inletting System With 5/16" Solid Steel Adjustment Rod Installed Below The Inlets So That There Is No Expansion Or Contraction During Winter & Summer Which Can Cause Unevenness In Inlets And In Temperature



It's Another
ULTRAFLO®

By



CHORE-TIME®
4-High
DURACAGE®

CHORE-TIME®
Dual Feed
Fill System

CHORE-TIME®
Variable Speed
Rubber Finger
Egg Collectors



**Largest Manufacturer
of Poultry Systems in
the World**

— all made
in the U.S.A.

★ FEED AND BIRDS CONTRACTED BY WENGER FEEDS - RHEEMS, PA
★ FOR INFORMATION ABOUT CONTRACTS & LAYER SYSTEMS CONTACT LARRY HORST 717-656-7799

**Northeast
agri
systems**



NORTHEAST AGRI SYSTEMS, INC.

139 A West Airport Rd. Lititz, PA 17543

FLYWAY BUSINESS PARK (717) 569-2702

TOLL FREE: 1-800-673-2580

Store Hours:
Mon.-Fri.
7:30-4:30

FOR YOUR
REMODELING
NEEDS, WATERING,
FEEDING OR
VENTILATION
EQUIPMENT
CALL US